

Ledex® Box Frame Size B12 — DC Operation

Part Number: B12 - **XXX** - B-3

All catalog products manufactured after April 1, 2006 are RoHS Compliant

Select from performance chart below

Specifications

Operation	Pull
Dielectric Strength	500 VRMS for one second
Continuous Duty Cycle	100% at 20°C ambient temperature
Intermittent Duty Cycle	See below
Minimum Heat Sink	None
Holding Force	7.7 oz. (2.1 N) at 20°C
Coil Insulation	Class "A": 105°C max. temperature standard. Other temperature classes are available
Coil Termination	10" PVC leads
Plunger Weight	0.05 oz. (1.4 g)
Total Weight	0.30 oz. (8.5 g)
Dimensions	See page 33

Performance

Maximum Duty Cycle	100%	50%	25%	10%
Maximum ON Time (sec) when pulsed continuously	∞	84	11	2
Maximum ON Time (sec) for single pulse	∞	120	34	8
Watts (@ 20°C)	1.3	2.6	5.2	13
Ampere Turns (@ 20°C)	178	251	355	561

Coil Data

Part Number	Resistance (@20°C)	Ref # Turns	VDC (Nom)	VDC (Nom)	VDC (Nom)	VDC (Nom)
B12-258-B-3	6.92	417	3	4.24	6	9.5
B12-255-B-3	27.7	824	6	8.5	12	19
B12-256-B-3	62.3	1184	9	13	18	28.5
B12-254-B-3	110.8	1632	12	17	24	38
B12-253-B-3	443.1	3336	24	34	48	76

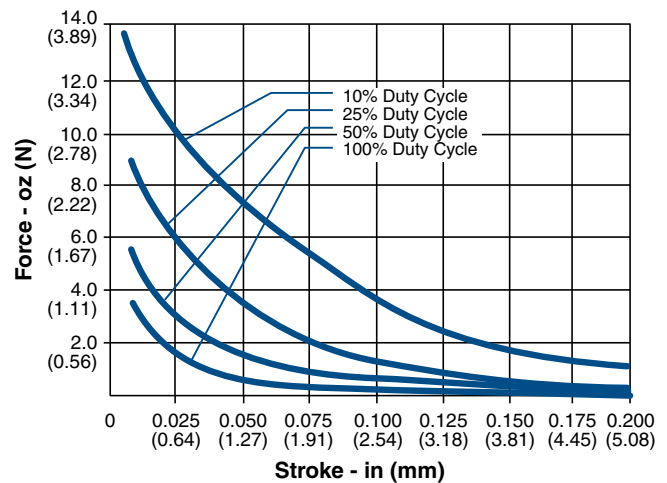
NOTES:

1. All data is typical.
2. Force testing is done with the solenoid in the horizontal position.
3. All data reflects operation with no heat sink.
4. Pull versions standard; push versions available.

Well-suited for battery operation. See the "Battery Operated Solenoids" section for complete information.



Typical Force @ 20°C



How to Order

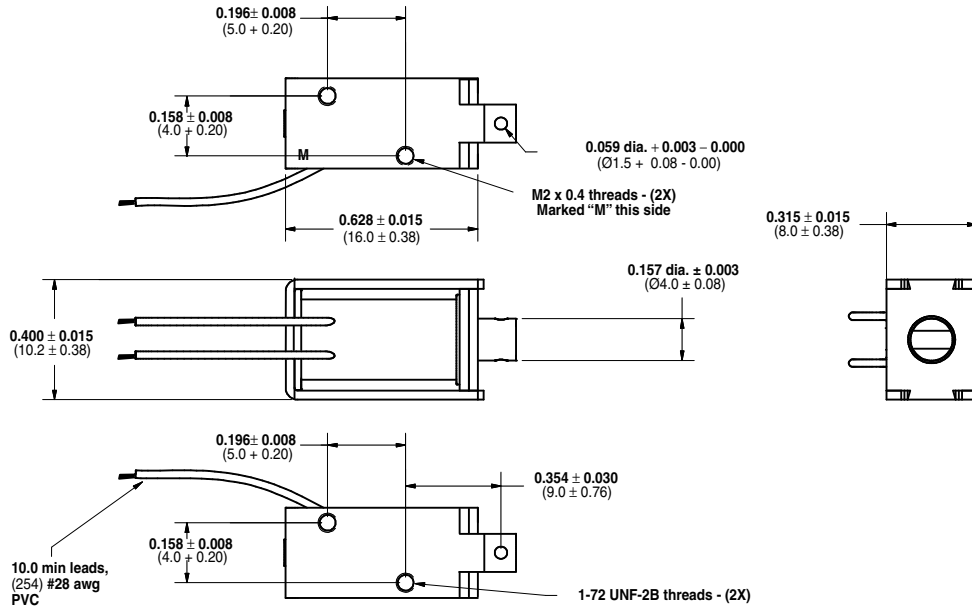
Select the part number from the table provided. (For example, to order a 25% duty cycle unit rated at 48 VDC, specify B12-253-B-3.

Please see www.ledex.com (click on Stock Products tab) for our list of stock products available through our North American distributors.

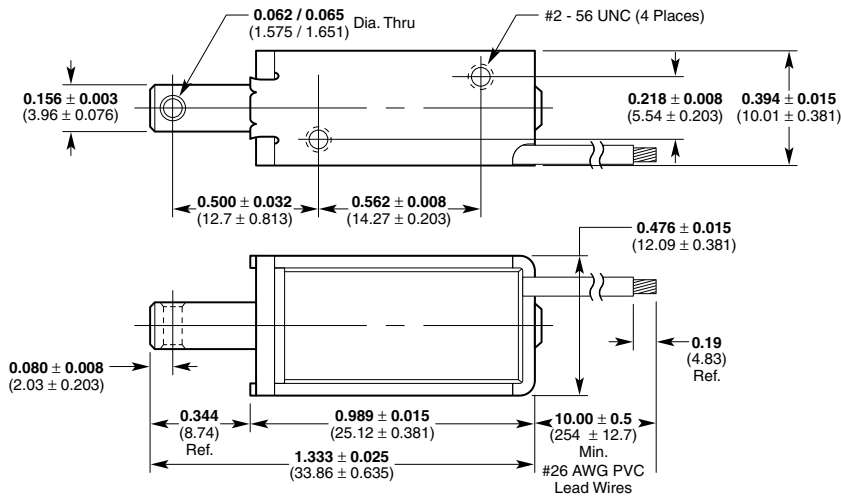
Ledex® Box Frame Dimensions

Inches (mm)

B12



B16



All solenoids are illustrated in energized state

All specifications subject to change without notice.