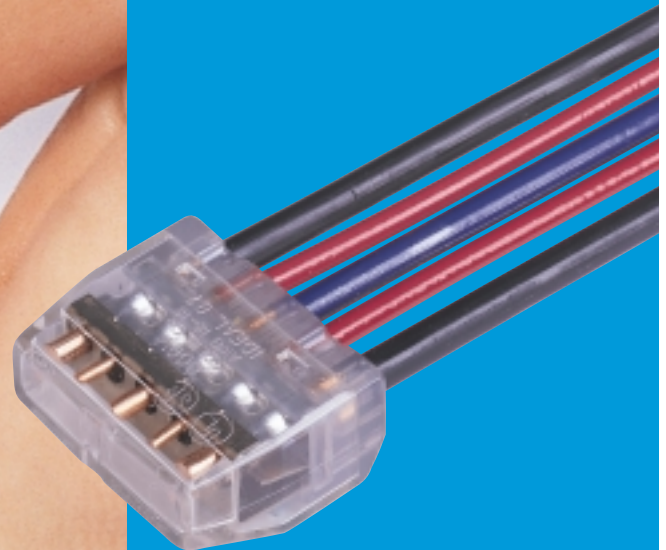




In-Sure™ Push-In Wire Connector

- *Clear shell gives visual verification of connection*
- *No-twist connection reduces repetitive motion fatigue*
- *Compact size makes installation easy*
- *Low insertion force for fast and easy connections*
- *Fits any combination of 12-18 AWG solid or tin-bonded copper conductors*





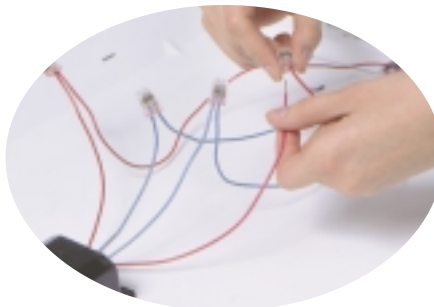
In-Sure™ Push-In Wire Connectors

The In-Sure™ Push-In Wire Connector from IDEAL. The fastest, easiest, no-twist push-in connector. Perfect for OEM lighting manufacturing, prefabricated wiring systems and other OEM and branch circuit wiring applications. The clear polycarbonate housing allows visual verification of every connection. Simply glide the wire in – the low insertion force makes it easy. In-Sure™ also allows removal of the wire after the connection has been established. UL Listed 94 D-Z, CSA Certified, and rated to 600V and 105°C. In-Sure™ saves time and improves productivity while perfecting connections.



Features

- Accepts any combination of 12-18 AWG solid or tin-bonded copper conductors
- Electrolytic tin-plated copper bus system
- Stainless steel inserts restrict pull-out
- Available in 2 through 8 port models
- Color-coded for easy identification
- Each connector subjected to 3000V dielectric test
- Check port for continuity testing
- Built-in strip length gauge



Model	Color	No. of Ports	Length		Width		Height		Quantity	Cat. No.
			mm	in.	mm	in.	mm	in.		
84	Red	2	9.02	.355	11.02	.434	18.52	.729	300-pc. Jar, 12 pak	30-084J
									1000-pc. Box	30-184
									5000-pc. Box	30-684
85	Orange	3	9.02	.355	15.01	.591	18.52	.729	250-pc. Jar, 12 pak	30-085J
									1000-pc. Box	30-185
									5000-pc. Box	30-685
86	Yellow	4	9.02	.355	18.99	.748	18.52	.729	200-pc. Jar, 12 pak	30-086J
									1000-pc. Box	30-186
									5000-pc. Box	30-686
87	Gray	5	9.02	.355	23.03	.907	18.52	.729	150-pc. Jar, 12 pak	30-087J
									1000-pc. Box	30-187
									5000-pc. Box	30-687
88	Blue	6 Stacked	15.42	.607	15.32	.603	18.52	.729	100-pc. Jar, 12 pak	30-088J
									1000-pc. Box	30-188
									5000-pc. Box	30-688
90	Black	8	9.02	.355	35.03	1.379	18.21	.717	100-pc. Jar, 12 pak	30-090J
									1000-pc. Box	30-190
									5000-pc. Box	30-690



Form No. P-1608
©2000 IDEAL INDUSTRIES, INC.

IDEAL INDUSTRIES, INC.

Becker Place, Sycamore, IL 60178 - 800-435-0705 in U.S.A.
Ajax, Ontario, L1S 2E1, Canada - 800-527-9105 in Canada
Warrington, Cheshire WA5 5TN, England - 44 1925 444.446

www.idealindustries.com

Rev. 5/00
Printed in U.S.A.