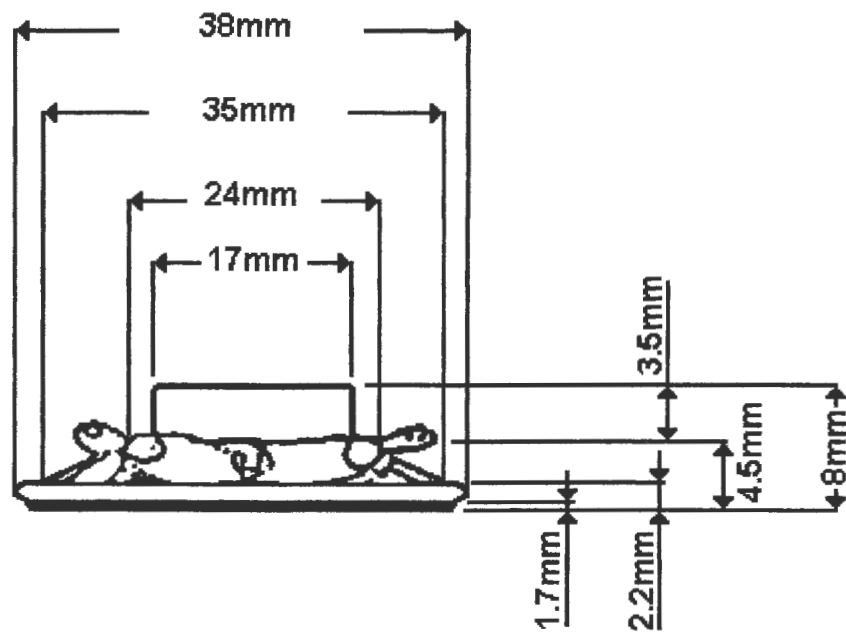
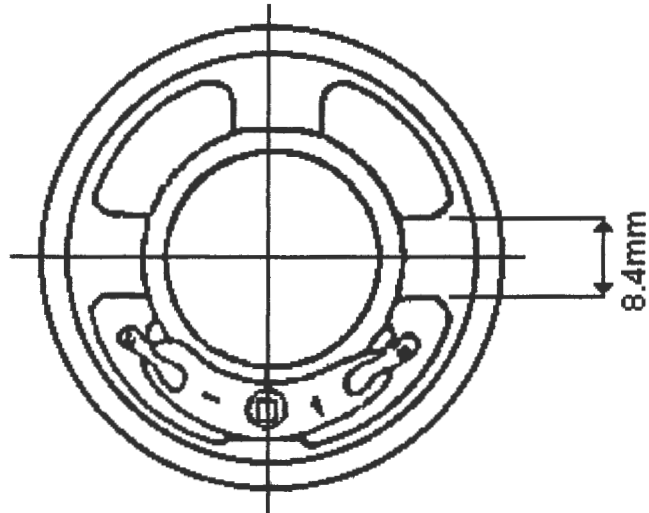


# INTERVOX Speakers from International ©

215 McCormick Drive, Bohemia, NY 11716 (631)952-9595 Fax: (631) 952-9597 e-mail: oemsales@icc107.com

ICC Part No.	<b>S150RLS</b>	
1. Dimension	Outer Diameter: 38 mm	Baffle Opening: 33 mm
	Height: 8 mm	Weight: 10.4 grams
2. Magnet	Material: Cobalt	Size: 12.5 X 1.5mm Weight 1.6 grams
3. Power Rating	Nominal Power Rating 0.1W 1 Max. Power Input 0.2W	
4. Voice Coil Impedance	8 $\Omega$ $\pm$ 15%	at 1000 Hz 1 V
5. Operation	Must be normal	Program Source 0.2 W
6. Buzz & Rattles	Must be normal	Sine Wave 0.2 W
7. Resonant Frequency	700 Hz $\pm$ 100 Hz	Without Baffle
8. Output S.P.L.	85 $\pm$ 3 dB	0.2W From 50cm Mean Value at 800, 1K, 1.2K, 1.5 Hz
9. Response	FO ~ 3000 Hz $\pm$ 10dB	
10. Distortion	5% Maximum	Rated Power Input 1,000 Hz
11. Load Test	Speaker shall meet items 5 & 6 after test.	0.2W 5 Hours White Noise
12. Humidity Test	Speaker shall meet item 5 & 6 after test.	40 $^{\circ}$ $\pm$ 2 $^{\circ}$ C 90% R.H. 48 Hrs.
13. Heat Test		40 $^{\circ}$ $\pm$ 2 $^{\circ}$ C 50% R.H. 48 Hrs.
14. Flux Density	6,000 Gauss	
15. Outside Dia. of Yoke Seat	24 mm	
16. Outside Dia. (Eliminate Rim)	35 mm	(Thickness of Rim: 2.2 mm)
17. Yoke Size	17 X 14.2 X 3.5 mm	

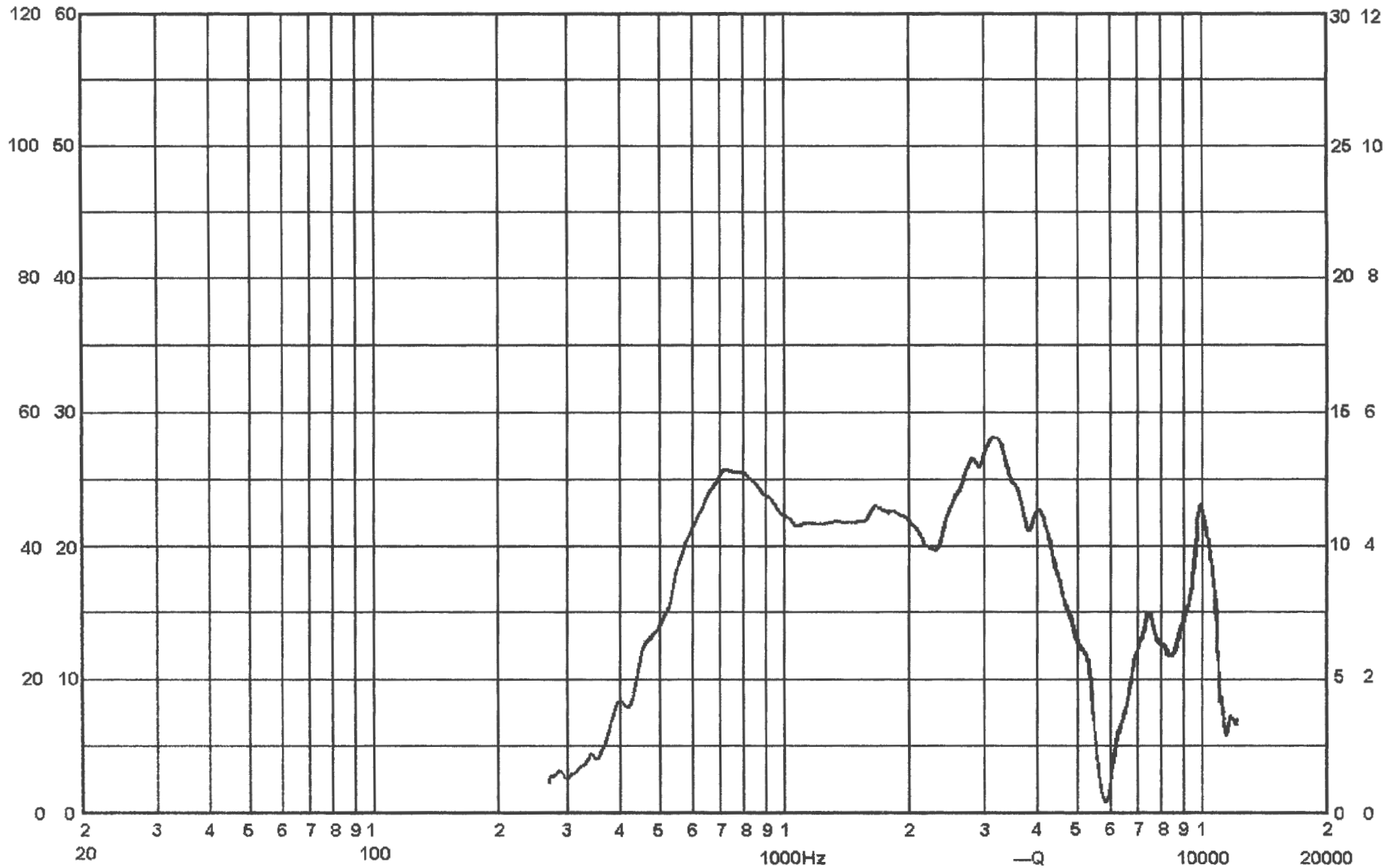
# INTERVOX Speakers from International ©



PART NO. S150RLS
SIZE: 1 1/2"
SCALE 1:1

# INTERVOX Speakers from International ©

Measuring Object: S150RLS Measuring Condition: 1.26 V 0.2 W 0.5 M  
Level Range: 60 dB Zero Level (Fundamental): 60 dB X Axis Speed: 23 mm/sec  
Impedance Range:           $\Omega$  Zero Level (Harmonic):          dB Y Axis Speed: 1000 mm/sec



FREQUENCY IN CYCLES PER SECOND