

# Internationally Rated Twist Lock® Devices Including New 63 AMP 230 Volt, 3-Wire Shore Power System

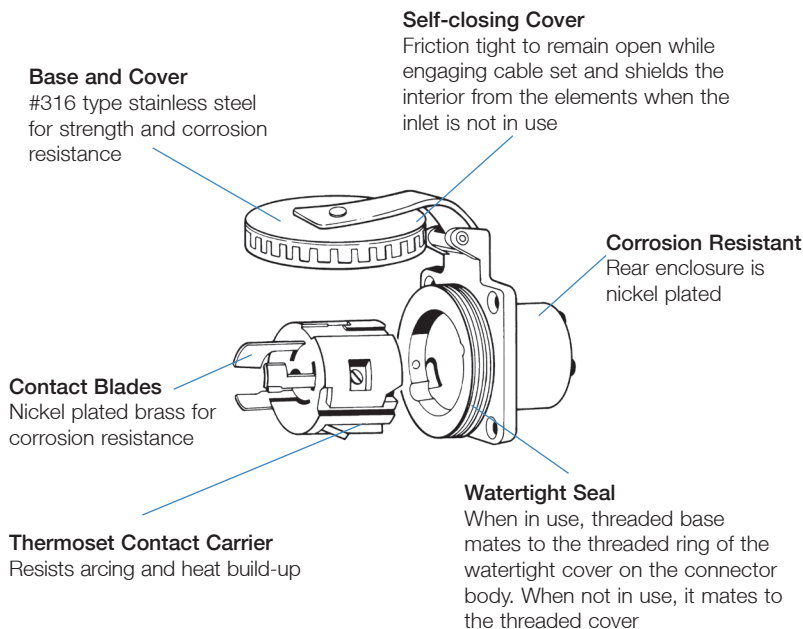
**IP56**  
SUITABILITY



## Safe Non-Interchangeable Solutions:

Hubbell, the only manufacturer of CE certified 16 AMP and 32 AMP, Shore Power Systems dedicated to the International boating community, now offers a 63 AMP Shore Power System.

- **NOT INTERCHANGEABLE** with U.S. Shore Power Systems
- Traditional Marine Styling (Similar to 16 Amp and 32 Amp Systems)
- Unparalleled Safety
- Premium Quality



## 63A 230V Ship-To-Shore Power Systems

Traditional, stainless steel shore power inlet, including higher-quality metal threads, heat-resistant thermoset interior and box lug terminals.  
**HBL363SSX**



Nickel plated brass plug with heat-resistant thermoset interior and box lug terminals cord grip range is .44 – 1.14 in. (11.1 – 29.0 mm)  
**HBL363CRP**



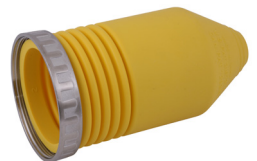
Nickel plated brass connector body with heat-resistant thermoset interior and box lug terminals. Cord grip range is .44 – 1.14 in. (11.1 – 29.0 mm)  
**HBL363CRC**



Single receptacle with heat-resistant thermoset base.  
**HBL363CRR**



Seal-Tite® cover for connector bodies when used with 63A shore power inlets. Stainless steel threaded sealing ring makes connections watertight. Accepts cable ranging .69 – 1.06 in. (17.5 – 26.9 mm)  
**HBL77CM15** (Yellow)  
**HBL77CM15W** (White)



Yellow Seal-Tite® Cover for 63 AMP plugs. Stainless steel threaded sealing ring makes connections watertight. Accepts cable ranging .69 – 1.06 in. (17.5 – 26.9 mm)  
**HBL77CM16** (Yellow)  
**HBL77CM16W** (White)





## Internationally Rated Twist Lock® Devices 16, 32 Amp, 230 Volt

**IP56**  
SUITABILITY

Hubbell offers the only CE certified electrical shore power system truly dedicated for boats destined for Europe and the International community. Hubbell's offering of international shore power inlets are available in traditional 316 stainless steel and attractive white non-metallic types resembling our domestic offering in style and appearance but are not interchangeable with the domestic shore power system.

Utilizing standard NEMA (National Electrical Manufacturer's Association) configurations not typically used in the marine market, Hubbell can offer a safe and non-interchangeable 16 Amp 230 Volt system and 32 Amp 230 Volt system for use with 50 cycle systems. The system includes white power supply cables (one-end, female only) in both the 16 Amp and 32 Amp categories.



**HBL316NM**  
**HBL332NM**



**HBL316SSX**  
**HBL332SSX**

### 16A 230V Ship-To-Shore Power System

Description	Catalog Number
Non-metallic, white, stylized, UV resistant shore power inlet. White Centrex cover makes the inlet weatherproof when closed. Mounting holes are 2.38 in. (60.3) on centers and match most existing mounting patterns. Rear enclosure strain/relief cap is provided.	<b>HBL316NM</b>
Traditional, stainless steel shore power inlet has new easy-to-wire terminations. Interior is transparent for quick and easy visual inspection. Interior is shielded from the elements by a gasketed, self-closing cover, watertight when cover is screwed in place. Mounting holes are 2.38 in. (60.3) on centers. Mounting screws and gasket included. Protective rear enclosure/strain relief also included.	<b>HBL316SSX</b>
25 ft. (7.6m) white, vinyl jacketed power supply cord with female (boat side) end only; other end blunt cut.	<b>HBL316CSW25</b>
50 ft. (15.2m) white, vinyl jacketed power supply cord with female (boat side) end only; other end blunt cut.	<b>HBL316CSW</b>
Yellow locking connector replacement end for HBL316CSW25 and HBL316CSW. IP20 suitability.	<b>HBL316CRCX</b>
White Seal-Tite® cover with threaded sealing ring for use with HBL316CRCX and HBL332CRCX connector bodies. IP55 suitability.	<b>HBL60CM33W</b>
Yellow Seal-Tite® cover with threaded sealing ring for use with HBL316CRCX and HBL332CRCX connector bodies. IP55 suitability.	<b>HBL60CM33</b>



**HBL316CSW25**  
**HBL316CSW**  
**HBL332CSW**

### 32A 230V, 50 Cycle Ship-To-Shore Power System

Description	Catalog Number
Non-metallic, white, stylized, UV resistant shore power inlet. White Centrex cover makes the inlet weatherproof when closed. Mounting holes are 2.38 in. (60.3) on centers and match most existing mounting patterns. Rear enclosure/strain relief cap is provided.	<b>HBL332NM</b>
Traditional, stainless steel shore power inlet has new easy-to-wire terminations. Interior is transparent for quick and easy visual inspection. Interior is shielded from the elements by a gasketed, self-closing cover, watertight when cover is screwed in place. Mounting holes are 2.38 in. (60.3) on centers. Mounting screws and gasket included. Protective rear enclosure/strain relief also included.	<b>HBL332SSX</b>
50 ft. (15.2m) white, vinyl jacketed power supply cord with female (boat side) end only; other end blunt cut.	<b>HBL332CSW</b>
Yellow locking connector replacement end for HBL332CSW. IP20 suitability.	<b>HBL332CRCX</b>
White Seal-Tite® cover with threaded sealing ring for use with HBL316CRCX and HBL332CRCX connector bodies. IP55 suitability.	<b>HBL60CM33W</b>
Yellow Seal-Tite® cover with threaded sealing ring for use with HBL316CRCX and HBL332CRCX connector bodies. IP55 suitability.	<b>HBL60CM33</b>



**HBL316CRCX**  
**HBL332CRCX**



**HBL60CM33**  
**HBL60CM33W**