

Hubbellock® Devices
 60A, 600V AC, 4 Pole, 5 Wire Grounding
 Hubbellock® Flanged Inlet

HUBBELL

Features

- Molded-in male contacts are resistant to damage and provide a consistently positive connection
- Color coded metallic housing enhances safety and abuse resistance
- Box terminals in conjunction with stainless steel terminal screws provide maximum termination strength and dependability

Ordering Information

Description	Device Color	UPC	Catalog Number
Black phenolic interior with steel housing and flange	Yellow	783585017624	HBL26522

Listings

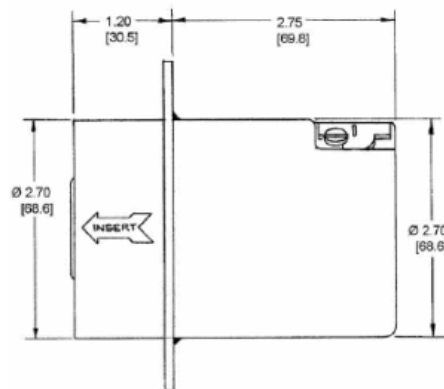
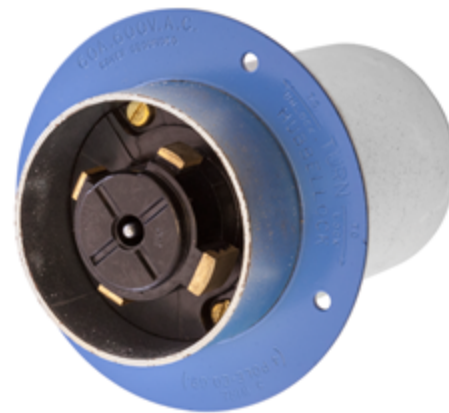
Listed to UL Standard
 Certified to CSA Standard

Specifications

Flanged Housing	Zinc plated steel
Inlet Interior	Phenolic
Contacts	Brass
Terminal	Copper
Terminal Screws	Stainless Steel

Performance

Electrical	
Current Interrupting	Certified for current interrupting at full rated current
Dielectric Voltage	2,000V minimum
Mechanical	
Terminal Accomodation	#8 AWG - #4 AWG solid or stranded copper wire only.
Terminal Identification	Terminals identified in accordance with UL 498
Environmental	
Flammability	UL 94 V0
Moisture Resistance	IP30 Suitability
Operating Temperatures	Maximum Continuous 75°C Minimum -40°C (w/o impact)



Accessories

Connector	HBL26516
-----------	----------

Resources

Customer Use Drawing
 eCatalog

Dimensions in Inches (mm)

Hubbell Wiring Device-Kellems • Hubbell Incorporated (Delaware) • 40 Waterview Drive • Shelton, CT 06484

Phone (800) 288-6000 • Fax (800) 255-1031 • Specifications subject to change without notice.

