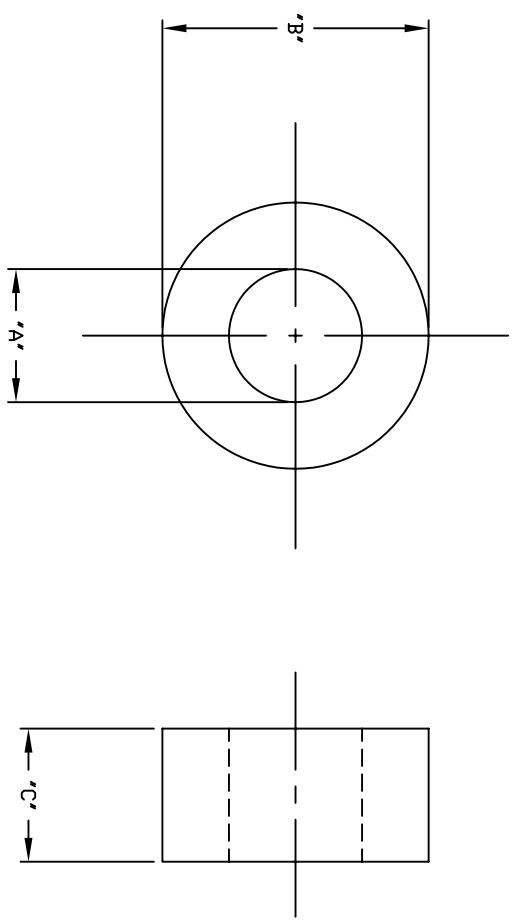


REVISIONS		RESD	DATE	APPR
SYM	DESCRIPTION	BY		

PART NO. FIBRE	PART NO. NYLON	DIM. "A"	DIM. "B"	DIM. "C"	SCREW CLR.
2191	2652	.093	.250	.031	#2
	2671	.093	.250	.062	#2
	2514	.115	.281	.046	#4
2161		.125	.250	.062	#4
2160	2670	.140	.250	.062	#6
2162		.140	.375	.062	#6
	2672	.140	.312	.062	#6
	2515	.140	.312	.046	#6
2163	2673	.171	.375	.062	#8
	2516	.167	.375	.062	#8
2164	2674	.203	.375	.062	#10
	2517	.203	.427	.062	#10
2165	2675	.250	.500	.062	1/4
2166	2676	.250	.500	.093	1/4
	2518	.250	.625	.062	1/4
2167	2677	.312	.500	.062	5/16
2168	2678	.375	.625	.062	3/8
2169	2679	.375	.750	.062	3/8



NOTE:

FIBRE, BLACK OR GRAY, COMMERCIAL GRADE, VULCANIZED. NON-STANDARD NYLON, NATURAL 6/6

MATERIAL	SEE NOTE	FINISH	---
DIMENSIONAL TOLERANCES UNLESS OTHERWISE SPECIFIED	TITLE	FLAT INSULATING WASHER	
.XX	XXX	XXXX	
---	---	---	---
FRACTIONS	ANGLES	SCALE	
---	---	NONE	
HEAT TREAT	---	---	---
PLUT SCALE	1=1	DRAWN BY B.FRANKLIN	DATE 9-9-91
		CHECKED E.MCKINNEY	DATE 9-11-91
		APPROVED D.MILLER	DATE 9-11-91
		SIZE	DRAWING NUMBER
		B	SD: SMP-00042
			ISSUE

ABBATRON
Electronic Connectors and Hardware
632 Arch Street, Meadville, Pa. 16335