



KNOCKOUTS

WANT SPEED? TRY THE GREENLEE SPEED PUNCH™ SYSTEM.
WANT SELF CENTERING? SLUG SPLITTER / SLUG BUSTER® SC.
WANT SIZE? LARGE-DIAMETER STAINLESS STEEL KNOCKOUTS.
WANT THE WIDEST RANGE OF FAST, RELIABLE KNOCKOUTS?
TRY GREENLEE.











Contents

Speed Punch™ Knockouts	60
Electric & Battery-Powered Knockout Kits	62
Slug-Splitter SC™ Knockout Punches/Kits	64
Slug-Buster® Hydraulic Knockouts/Kits	66
Slug-Buster® Knockouts/Kits	72
Standard Hydraulic Knockout Kits	77
Standard Knockout Kits	79
Knockouts For Stainless Steel	82
Slug-Buster® Knockouts	84
Standard Knockouts	86
Special Application Punches	88
Knockout Parts Cabinets	91
Draw Studs For Knockouts	92
Stud Punches	96
C-Frame Punches	98
Manual Hydraulic Pumps	99
Hydraulic Pump Accessories	100

SELECTION GUIDES

Holemaking Selection Guide

MATERIAL TYPE	MATERIAL THICKNESS	NUMBER OF HOLES	PRODUCTS	APPLICATION CONSIDERATIONS	PAGES
Steel 	10GA	Highest	Slug-Splitter SC™ Punches	Maximum durability and universal material usage Maximum hole size 2-3/8 inches	64-67
			Speed Punch™ Punches	Maximum hole size 2-3/8 inches	60-61
	10GA	High	Slug-Buster® Punches	Maximum hole size 2-3/8 inches	68-80
	10GA	High	Standard Punches	Maximum hole size 6-3/8 inches	81-87
	10GA	Medium-High	Ultra Cutters	Maximum hole size 2-1/2 inches	120
	8GA	High	Carbide-Tipped Hole Cutters	Maximum hole size 2-1/2 inches	119
	10GA	Medium-High	Step Bits	Maximum hole size 1-3/8 inches	104-105
	10GA	Medium	Hole Saws	Maximum hole size 6 inches	121-122
Stainless Steel 	10GA	Highest	Slug-Splitter SC™ Punches	Maximum durability and universal material usage	64-67
	10GA	Highest	Lrg. Dia. Punches for Stainless	Hole size 2-1/2 – 4 inches	67
	9GA	Medium-High	Quick Change Carbide-Tipped Cutter	Maximum hole size 3 inches, quick change cutting heads	118
	8GA	Medium-High	Carbide-Tipped Hole Cutters	Maximum hole size 2-1/2 inches	119
Wood 	18"	High	Nail Eater® RT	Cuts through nails, good chip removal, max hole size 1 inches	106
	18"	High	Nail Eater II® Bits	Cuts through nails, good chip removal, max hole size 1-1/4 inches	107
	2-2 x 4's	High	E-Z Bore® Bits	Self feed screw for hard or soft woods, max hole size 4-5/8 inches	110
	2 x 4	High	Step Bits	Maximum hole size 1-3/8 inches, low chip removal	104-105
	16"	Medium	Spade Bits	Maximum hole size 1-1/2 inches	111-112
	1-5/8" or 2 x 4	High	Hole Saws	Maximum hole size 6 inches	121-122
Aluminum 	10GA	Highest	Slug-Splitter SC™ Punches	Maximum durability and universal material usage Maximum hole size 2-3/8 inches	64-67
			Speed Punch™ Punches	Maximum hole size 2-3/8 inches	60-61
	10GA	High	Slug-Buster® Punches	Maximum hole size 2-3/8 inches	68-80
	10GA	High	Standard Punches	Maximum hole size 6-3/8 inches	81-87
	10GA	High	Ultra Cutters	Maximum hole size 2-1/2 inches	120
	10GA	High	Step Bits	Maximum hole size 1-3/8 inches	104-105
	10GA	Medium	Hole Saws	Maximum hole size 6 inches	121-122
Fiberglass/Plastic  	approx. 1/8"	Highest	Slug-Splitter SC™ Punches	Maximum durability and universal material usage Maximum hole size 2-3/8 inches	64-67
			Speed Punch™ Punches	Maximum hole size 2-3/8 inches	60-61
	approx. 1/8"	High	Slug-Buster® Punches	Maximum hole size 2-3/8 inches	68-80
	approx. 1/8"	High	Standard Punches	Maximum hole size 6-3/8 inches	81-87
		High	Ultra Cutters	Maximum hole size 2-1/2 inches	120
		Medium-High	Step Bits	Maximum hole size 1-3/8 inches	104-105
	1-5/8"	Medium	Hole Saws	Maximum hole size 6 inches	121-122
Drywall/Ceiling Tile 	7/8"	High	Recessed Light Hole Saws	Replaceable blades	126
	7/8"	Medium-Low	Quick Cutter	Adjustable or fixed, sprinkler heads or lighting	126
	7/8"	Medium	Keyhole Saw	Non-round holes	131
Quazite®* Enclosures		High	Slug-Buster® Punches		68-80
	approx. 1/8"	High	Carbide-Grit Hole Saws		123
Cement Board/Hardy Board Siding		High	Carbide-Grit Hole Saws		123
Existing Wall			D'versibits®	Remodeling, phone, cable, alarm installation	113-117
Non-Round Hole 		High	Non-Round Punches	Square, rectangular, electronic connector holes	88-90
		Medium	Reciprocating Blades		128-129
Metric & Non-Conduit Sizes	16-10GA	High	Standard Punches		81-87
Metal Studs	20GA		Stud Punches		96-97

Knockout Punch Selection Guide



DRIVER TYPE	DRIVE METHOD	CAPACITY	SIZE RANGE AVAILABLE	PAGES
Speed Punch™	Hydraulic or Battery	Mild steel up thru 10 gauge (3.5 mm)	1.115" through 2.416" dia. (28.3 mm through 61.4 mm)	60-61
Slug-Splitter™ & Slug-Splitter SC™	Ratchet, Hydraulic or Battery	Stainless steel or mild steel up thru 10 gauge (3.5 mm)	.598" through 2.526" dia. (15.2 mm through 64 mm)	64-67
Slug-Buster® & Slug-Buster SC®	Manual, Ratchet, Hydraulic or Battery	Mild steel up thru 10 gauge (3.5 mm)	.492" through 2.52" dia. (12.5 mm through 64.0 mm)	68-80
Standard Round	Manual, Ratchet, Hydraulic or Battery	Mild steel up thru 10 gauge (3.5 mm)	.500" through 6.375" dia. (12.7 through 161.9 mm)	81-87

Knockout Punch Driver Selection Guide



DRIVER TYPE	DESCRIPTION	AVAILABLE DRIVER KITS	PAGES	
Battery-Powered Driver (18V Li-Ion Battery)	<ul style="list-style-type: none"> Punch holes from any angle with the 360° rotating head. Punches up to 6" holes in 14 gauge mild steel and 2" holes in 14 gauge stainless steel. Slim, compact and lightweight design for reduced fatigue and easy control. Automatic retraction prevents damage to punch and die. One trigger controls all tool functions, no additional manual work required. LED light illuminates dark work areas. 	Driver with Speed Punch™ Punches	60-61	
Battery-Powered or Corded Hydraulic Driver (18V Li-Ion Battery or 120VAC Adapter)	<ul style="list-style-type: none"> Develops 6.7 tons of hydraulic force. Available with a choice of three battery chargers – 120V. Punches up through 10 gauge (3.5 mm) mild steel with Greenlee Speed Punch™, Slug-Buster® and standard knockout punches and 12 gauge (2.5 mm) stainless steel with Greenlee Slug-Splitter SC™ knockout punches. 	Driver Only and Driver with Slug-Buster® Punches	62-63	
Hand Pump Hydraulic Driver with Ram	<ul style="list-style-type: none"> Foot operation frees both hands to operate punch. Powerful hydraulic ram develops 11 tons of hydraulic force. Punches up through 10 gauge (3.5 mm) mild steel with Greenlee Speed Punch™, Slug-Buster® and standard knockout punches and 10 gauge (3.5 mm) stainless steel with Greenlee Slug-Splitter SC™ knockout punches. 	Driver with Slug-Buster® SC Punches	64-65	
Foot Pump Hydraulic Driver with Ram	<ul style="list-style-type: none"> Powerful hydraulic ram develops 11 tons of hydraulic force. Punches up through 10 gauge (3.5 mm) mild steel with Greenlee Speed Punch™, Slug-Buster® and standard knockout punches and 10 gauge (3.5 mm) stainless steel with Greenlee Slug-Splitter SC™ knockout punches. 	Driver Only and Driver with Slug-Buster® Punches	68-69	
Quick Draw® Hydraulic Driver	<ul style="list-style-type: none"> Quick Draw driver is perfect for fast, straight-on panel punching. 	Driver with Standard Punches	81-82	
Quick Draw 90® Hydraulic Driver	<ul style="list-style-type: none"> Quick Draw 90 right-angle design allows greater versatility in tight spaces. 	<ul style="list-style-type: none"> Develops 8 tons of hydraulic force for easy punching. Punches up through 10 gauge (3.5 mm) mild steel with Greenlee Speed Punch™, Slug-Buster® and standard knockout punches and 10 gauge (3.5 mm) stainless steel with Greenlee Slug-Splitter SC™ knockout punches. 	Driver with Speed Punch™ Punches	60-61
Quick Draw® Flex Hydraulic Driver	<ul style="list-style-type: none"> Quick Draw Flex allows unlimited driver orientation. 	Driver Only and Driver with Slug-Buster® Punches	72-73	
High Leverage Ratchet Driver	<ul style="list-style-type: none"> Time saving ball bearing head punches faster than wrench method. Punches up through 10 gauge (3.5 mm) mild steel with Greenlee Speed Punch™, Slug-Buster® and standard knockout punches and 16 gauge (1.5 mm) stainless steel with Greenlee Slug-Splitter SC™ knockout punches. 	Driver with Speed Punch™ Punches	60-61	
Manual Ratchet Driver	<ul style="list-style-type: none"> Unique punch profile splits slugs allowing easy slug removal. 1" Hex Ratchet Wrench allows use with both 3/8" (19.1 mm) and 3/4" (9.5 mm) draw studs. Slug-Buster® Punches available in sizes up thru 2.52" (64.0 mm). Standard round punches available up to 5 5/8" (144.1 mm). 	Driver with Slug-Buster® Punches	75	
		Driver with Slug-Buster® Metric Punches	77	
		Driver with Standard Metric Punches	85	

SPEED PUNCH™ KNOCKOUTS

Speed Punch™ Knockout System

NEW PRODUCT



VIDEO

A PRODUCT VIDEO IS AVAILABLE, SCAN THIS QR CODE OR VISIT:
www.youtube.com/GreenleeDEMO

SAVE TIME AND MONEY WITH EVERY PUNCH!

From the leaders in knockout technology comes the new SPEED PUNCH™ System. The patent pending “no-thread” design eliminates cross-threading, while the innovative SPEED LOCK mechanism quickly secures the punch in place. This means longer tool life and faster punches, saving you time and money on the job. SPEED PUNCH™ is available in 3/4” - 2” conduit sizes and three kit configurations.

- Punch up to 10 gauge mild steel, aluminum, fiberglass or plastic.
- Use with hydraulic and battery-powered drivers.
- Available in 3/4” - 2” conduit sizes and three kit configurations.

SPECIFICATIONS

Capacity	Mild steel up through 10 gauge (3.5 mm)
Application	Mild steel, fiberglass and plastic enclosures.
Hole Sizes	Conduit Sizes - Hole size is outside diameter of US conduit sizes. Example: 3/4" conduit size actually makes a 1-3/32" hole. Pg Sizes - European standard pipe sizes. ISO Sizes - International Standards Organization pipe sizes.
Operation	Operate with battery, hydraulic driver only.



UP TO 3X FASTER*

“No-thread” punch design quickly and easily slides on/off draw stud: The fastest punch system on the market today.

* Compared to standard threaded punch & draw stud set-up and disassembly.

It's as simple as:



1 SLIDE
Slide die and punch onto draw stud: “No-thread” design eliminates cross-threading.



2 SECURE
Secure SPEED LOCK onto draw stud: Faster setup and disassembly.



3 PUNCH
Punch hole: Save time and money with every punch!

Speed Punch™ Knockout System



CAT. NO.	UPC NO.	DESCRIPTION	HOLE SIZE						CAPACITY MILD STEEL		
			CONDUIT & PIPE SIZE	ACTUAL		GA	MM	LS50L11SP/01081	7906SBSP/09278	7905SBSP/01081	
				Ø INCH	Ø MM						
7212SP-3/4P	00952	Punch, 3/4" Conduit, Speed Punch	3/4"	-	1.115	28.3	10	3.5	✓	✓	✓
7212SP-1P	00953	Punch, 1" Conduit, Speed Punch	1"	-	1.362	34.6	10	3.5	✓	✓	✓
7212SP-1-1/4P	00955	Punch, 1-1/4" Conduit, Speed Punch	1-1/4"	1-11/16"	1.701	43.2	10	3.5	✓	✓	✓
7212SP-1-1/2P	09282	Punch, 1-1/2" Conduit, Speed Punch	1-1/2"	1-15/16"	1.951	49.6	10	3.5	✓	✓	✓
7212SP-2P	09283	Punch, 2" Conduit, Speed Punch	2"	2-3/8"	2.416	61.5	10	3.5	✓	✓	✓
7212SP-3/4D	09279	Die, 3/4" Conduit, Speed Punch	3/4"	-	1.115	28.3	10	3.5	✓	✓	✓
7212SP-1D	09280	Die, 1" Conduit, Speed Punch	1"	-	1.362	34.6	10	3.5	✓	✓	✓
7212SP-1-1/4D	09281	Die, 1-1/4" Conduit, Speed Punch	1-1/4"	1-11/16"	1.701	43.2	10	3.5	✓	✓	✓
7212SP-1-1/2D	00956	Die, 1-1/2" Conduit, Speed Punch	1-1/2"	1-15/16"	1.951	49.6	10	3.5	✓	✓	✓
7212SP-2D	00957	Die, 2" Conduit, Speed Punch	2"	2-3/8"	2.416	61.5	10	3.5	✓	✓	✓
SP-LOCK	09277	Speed Lock							✓	✓	✓
7212SP11	10002	Draw Stud, 3/4" X 4.77", Speed Punch							✓	✓	✓
7212SP12*	00979	Draw Stud, 3/4" X 5.63", Speed Punch									
34403	34403	Kwik-Stepper #3 Step Bit							✓	✓	✓
-	-	Plastic Case								✓	✓
33786	33786	Quick Draw 90 Punch Driver								✓	
52178	52178	120V Charger							✓		
52177	52177	18V 1.5 Ah Li-Ion Battery							✓		
LS50LB	01131	LS50 Punch Driver and Case Only (No Battery, Charger, or accessories)							✓		
KK50LFLEX	00185	LS50 Plastic Case Only							✓		

*For use with 746 Hydraulic RAM

ELECTRIC & BATTERY-POWERED KNOCKOUT KITS

LS50L Battery-Powered Knockout Punch Driver

NEW PRODUCT

AVAILABLE AS
BARE TOOL



- Punch holes from any angle with the 360° rotating head.
- Punches up to 6" holes in 14 gauge mild steel and 2" holes in 14 gauge stainless steel.
- Slim, compact and lightweight design for reduced fatigue and easy control.
- Automatic retraction prevents damage to punch and die.
- One trigger controls all tool functions, no additional manual work required.
- Non-slip rubber grip for firm and comfortable hold.
- LED light illuminates dark work areas.

SPECIFICATIONS

Weight (driver with battery)	5.05 lbs (2.29kg)
Maximum Punch Force	6 Tons (60kN)
Charging Time	22 min (RAL2/BL1380) or 15 min (RAL1/BL1815)
Battery Voltage	18V

CAT. NO.	UPC NO.	DESCRIPTION
LS50L11A	04951	Punching Tool Kit Includes: LS50L Battery Driver, (1) 18V Li-ion Battery, (1) 120V Battery Charger, (1) Spacer (1924AA), (1) 3/4-16 x 4 Drawstud (31872). (1) 3/8 x 4.8 Drawstud (209633)
LS50L11B	04956	Punching Tool Kit Includes: LS50L Battery Driver, (1) 18V Li-ion Battery, (1) 120V Battery Charger, (1) Spacer (1924AA), (1) 3/4-16 x 4 Drawstud (31872). (1) 3/8 x 4.8 Drawstud (209633), Slugbuster punches and dies for (1/2", 3/4", 1", 1-1/4", 1 1/2" and 2") conduit
LS50LB	01131	LS50 punch driver and case only (no battery, charger, or accessories).



A PRODUCT VIDEO IS AVAILABLE, SCAN THIS QR CODE OR VISIT:
www.youtube.com/GreenleeDEMO

Battery-Powered Knockout Punch Driver Kits Parts List

	CAT NO.	UPC NO.	DESCRIPTION	HOLE SIZE			KIT CAT./UPC NO.		
				CONDUIT & PIPE SIZE	ACTUAL		LS50L11A	LS50L11B	
					Ø INCH	Ø MM	LS60LA11	LS60LB11	
PUNCHES AND DIES	721-1/2	31756	1/2" Conduit Size Slug-Buster® Punch	1/2"	7/8	0.885	22.5	✓	
	14722	14722	1/2" Conduit Size Die	1/2"	7/8	0.885	22.5	✓	
	721-3/4	31757	3/4" Conduit Size Slug-Buster® Punch	3/4"	—	1.115	28.3	✓	
	124AV	06972	3/4" Conduit Size Die	3/4"	—	1.115	28.3	✓	
	721-1	31758	1" Conduit Size Slug-Buster® Punch	1"	—	1.362	34.6	✓	
	126AV	04011	1" Conduit Size Die	1"	—	1.362	34.6	✓	
	721-1-1/4	31759	1-1/4" Conduit Size Slug-Buster® Punch	1-1/4"	1-11/16	1.701	43.2	✓	
	128AV	04013	1-1/4" Conduit Size Die	1-1/4"	1-11/16	1.701	43.2	✓	
	721-1-1/2	31760	1-1/2" Conduit Size Slug-Buster® Punch	1-1/2"	1-15/16	1.951	49.6	✓	
	440AV	04061	1-1/2" Conduit Size Die	1-1/2"	1-15/16	1.951	49.6	✓	
	721-2	31761	2" Conduit Size Slug-Buster® Punch	2"	2-3/8	2.416	61.5	✓	
	442AV	04063	2" Conduit Size Die	2"	2-3/8	2.416	61.5	✓	
	DRAW STUDS AND MISC.	1614SS	30043	Draw Stud - 3/8" x 2-13/16"					✓
		31872	31872	Draw Stud - 3/4" x 4-1/8"					✓
1924AA		03248	Spacer Short					✓	
33967		33967	Stud Adapter - 3/8"					✓	

LS60L Battery-Powered Knockout Punch Driver Kits



LS60LA11

- State of the art 18V lithium ion (Li-ion) battery provides 70% more cycles per charge and faster cycle times.
- LED light provides the operator with the battery charge and tool maintenance status.
- Forward handle position improves tool balance.
- One trigger controls all tool functions.
- Punching cycle stops automatically when hole is complete to prevent damage to punch
- Overmolded tacky grip areas make gripping the tool easier and more comfortable.
- LED work light illuminates dark work areas.
- Greenlee battery-powered punching tools now use bio-degradable oil.
- Smart chargers control the charging current, charging voltage and battery temperature to maximize battery life
- Available with 120V battery charger or with 120V corded adapter in place of batteries and charger

SPECIFICATIONS

Weight (driver with battery only)	8.8 lbs. (4.0 kg)
Overall Length (ram retracted)	11.5 in. (292 mm)
Height	12.5 in. (318 mm)
Maximum Punch Force	6.7 tons (60 kN)
Maximum Round Punch Size (in 10 gauge mild steel)	2.42 in. dia. (61.5 mm dia)
Maximum Square Punch Size (in 10 gauge mild steel)	2-11/16 in. x 2-11/16 in. (68.0 x 68.0 mm)
Maximum Rectangular Punch Size (in 10 gauge mild steel)	1.378 x 2.559 in. (35.0 x 65.0 mm)
Maximum Ram Travel	0.87 in (22 mm)
Charging Time	Approximately 1 hour
Battery Voltage	18 V, 3.0Ah, Li-ion

CAT. NO.	UPC NO.	DESCRIPTION
LS60LA11	52155	Battery Punch Driver -120 Volt Charger
LS60LB11	52158	Battery Punch Driver -120 Volt Charger
LS60LA120	52161	Punch Driver - 120 Volt AC Adapter
LS60LB120	52163	Punch Driver - 120 Volt AC Adapter
KKLS60LGL	25749	Carry Case
52176	52176	18V, 3.0Ah, Li-ion Battery
12274	12274	Strap
52178	52178	120V Charger
52179	52179	230V Charger
52180	52180	12V Charger

See kit contents on page 62.

STEEL CAPACITIES FOR CONDUIT SIZES

STUD AND ACCESSORIES	STANDARD PUNCHES AND SLUG-BUSTER®							SLUG-SPLITTER SC™							Electronic Connector Punches RS-232, 229, 231, 234, 238
	1/2"	3/4"	1-7/32"	1"	1-1/4"	1-1/2"	2"	1/2"	3/4"	1-7/32"	1"	1-1/4"	1-1/2"	2"	
	COND.	COND.	COND.	COND.	COND.	COND.	COND.	COND.	COND.	COND.	COND.	COND.	COND.	COND.	
1614SS Draw Stud															
1924AA Spacer	10 GA. (0.1345" [3.5 mm]) MILD STEEL														
33967 Adapter															16 GA. (0.0598" [1.5 mm]) MILD STEEL AND 1/8" ALUMINUM
1924AA Spacer ①								10 GA. (0.1345" [3.5 mm]) STAINLESS STEEL							
29451 7/16" Draw Stud															
1924AA Spacer															
31872 3/4" Draw Stud															
31872 3/4" Draw Stud															
33967 Adapter															

① 29451 sold separately. See page 94 for ordering information.

10 GA. (0.1345" [3.5 mm]) MILD STEEL
 10 GA. (0.1345" [3.5 mm]) STAINLESS STEEL
 12 GA. (0.1046" [2.5 mm]) STAINLESS STEEL
 16 GA. (0.0598" [1.5 mm]) MILD STEEL AND 1/8" ALUMINUM

SLUG-SPLITTER SC™ KNOCKOUT KITS

Slug-Splitter SC™ Ram and Hand Pump Hydraulic Driver Punch Kits

Designed for stainless steel applications



7506 Punch Kit

All Kits Feature:

- Slug-Splitter SC™ (Self Centering) knockout punches with capacities up through 10 gauge (3.5 mm) stainless steel. Refer to individual punch capacity ratings.
- Self-centering punch aligns itself on pilot hole. (Slug-Splitter SC™)
- No need to draw crosshairs or line up die alignment marks. (Slug-Splitter SC™)

7506 Kit Features

- Fast, easy and simple to operate.
- Compact design makes this a perfect choice for use on construction sites and maintenance jobs.
- Will also drive 751 Cable Cutter head.
- Powerful 11-ton hydraulic ram.
- 3-foot hose.

SPECIFICATIONS

Operation 7307/29528 - Quick Draw®, Quick Draw 90® and Quick Draw® Flex Hydraulic Drivers, Battery-Powered Drivers, 7646 and 7625 Ram-Type Drivers.
 744/29619 - Quick Draw®, Quick Draw 90® and Quick Draw® Flex Hydraulic Drivers, Battery-Powered Drivers, 7646 and 7625 Ram-Type Drivers.
 7506/30385 - Hydraulic Ram and Hand Pump included.



7307 Punch Kit (driver not included)

CAT. NO.	UPC NO.	DESCRIPTION	WEIGHT	
			LBS.	KG.
744	29619	1/2" through 1-1/4" Conduit Size Slug-Splitter SC Knockout Punch Kit	5	2.3
7307	29528	1/2" through 2" Conduit Size Slug-Splitter SC™ Knockout Punch Kit	10.4	4.7
7506	30385	1/2" through 2" Conduit Size Slug-Splitter SC™ Knockout Punch Kit with Hydraulic Ram and Hand Pump	32	14.5

NOTE: See Slug-Splitter SC™ knockout punch units on pages 82-83 for list of individual punches, dies and draw studs.



744 Punch Kit (driver not included)

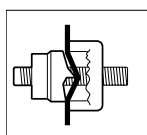
CAT. NO.	UPC NO.	DESCRIPTION	HOLE SIZE				CAPACITY		KIT CAT./UPC NO.		
			CONDUIT & PIPE SIZE	ACTUAL		STAINLESS STEEL		744/	7307/	7506/	
				Ø INCH	Ø MM	GA	MM	29619	29528	30385	
28154	28154	1/2" Conduit Size Punch	1/2"	7/8	.885	22.5	10	3.5	✓	✓	✓
28155	28155	1/2" Conduit Size Die	1/2"	7/8	.885	22.5	10	3.5		✓	✓
28156	28156	3/4" Conduit Size Punch	3/4"	—	1.115	28.3	10	3.5	✓	✓	✓
28157	28157	3/4" Conduit Size Die	3/4"	—	1.115	28.3	10	3.5	✓	✓	✓
36490	36490	1-7/32" Punch Oiltight	—	1-7/32	1.210	30.5	10	3.5			
36489	36489	1-7/32" Die Oiltight	—	1-7/32	1.210	30.5	10	3.5		✓	
28158	28158	1" Conduit Size Punch	1"	1-11/32	1.362	34.6	10	3.5	✓	✓	✓
28159	28159	1" Conduit Size Die	1"	1-11/32	1.362	34.6	10	3.5	✓	✓	✓
28160	28160	1-1/4" Conduit Size Punch	1-1/4"	1-11/16	1.701	43.2	10	3.5	✓	✓	✓
28161	28161	1-1/4" Conduit Size Die	1-1/4"	1-11/16	1.701	43.2	10	3.5	✓	✓	✓
28162	28162	1-1/2" Conduit Size Punch	1-1/2"	1-15/16	1.951	49.6	10	3.5		✓	✓
28163	28163	1-1/2" Conduit Size Die	1-1/2"	1-15/16	1.951	49.6	10	3.5		✓	✓
28165	28165	2" Conduit Size Punch	2"	2-3/8	2.416	61.5	10	3.5		✓	✓
28166	28166	2" Conduit Size Die	2"	2-3/8	2.416	61.5	10	3.5		✓	✓
29451	29451	7/16" x 4-1/4" Draw Stud							✓	✓	✓
29452	29452	3/4" x 5-1/2" Draw Stud							✓	✓	✓
29529	29529	Metal Case								✓	
19193	19193	Metal Case									
31068	31068	Metal Case									✓
746SS	30387	Ram (includes 1 each of the following 3 items)									
54167	54167	1/4" Female Coupler									✓
54168	54168	Dust Plug									
15908	15908	Spacer Group (includes 1 each of the following 3 items)									
1924AA	03248	Spacer-Short									
1925AA	03249	Spacer-Medium									✓
1926AA	06904	Spacer-Long									
767	13284	Hydraulic Hand Pump									✓
38316	38316	High Pressure Hose Unit—1/4" x 3' (includes 1 each of the following 3 items)									
54169	54169	1/4" Male Coupler									✓
54170	54170	Dust Cap									
06302	06302	High Pressure Hose—1/4" x 3'									✓

KNOCKOUTS FOR STAINLESS STEEL

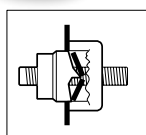
Slug-Splitter SC™ and Slug-Splitter Knockout Punches



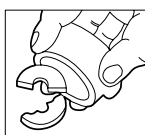
- Slug-Splitter SC™ heavy-duty punches are designed to punch up through 10 gauge (3.5 mm) stainless steel.
- Unique slug-splitting design and tool steel construction easily punch 10 gauge (3.5 mm) mild steel and stainless steel.
- Self-centering punch aligns itself on pilot hole. (Slug-Splitter SC™)
- No need to draw crosshairs or line up die alignment marks. (Slug-Splitter SC™)
- Unique punch profile also splits slugs for easier slug removal.
- Heavy-duty dies and stainless steel draw studs for longer life.
- Excellent abrasion resistance for punching fiberglass and plastic.
- Slug-Splitter SC™ punch units consist of: punch, die and draw stud. Check individual punch for specific capacity.
- Patent Pending for Self-centering Slug-Splitter SC™.



Unique Slug-Splitter SC™ punch design creases slug as the punch is drawn into the die.



Slug is split in half as punching operation is completed.



Split slugs fall free from the die and stud.

SPECIFICATIONS

Capacity	Stainless steel up through 10 gauge (3.5 mm)
Application	10-gauge stainless steel, mild steel, fiberglass and plastic enclosures.
Hole Sizes	Conduit Sizes - Hole size is outside diameter of US conduit sizes. Example: 1/2" conduit size actually makes a 7/8" hole. Pg Sizes - European standard pipe sizes. ISO Sizes - International Standards Organization pipe sizes.
Operation	Operate with battery, hydraulic or high leverage ratchet driver only.

SELF CENTERING – SLUG-SPLITTER SC™ KNOCKOUT PUNCHES 0.885" TO 2.416"

PUNCH CAT./UPC NO.	DIE CAT./UPC NO.	CONDUIT & PIPE	HOLE SIZE				CAPACITY		DRAW STUDS			
			ACTUAL				STAINLESS STEEL	HYDRAULIC DRIVERS		RATCHET DRIVER		
			Ø (INCH)	Ø (MM)	PG	ISO	GA.	(MM)	7804/7904	7646/7625	1904	
28154	28155	1/2"	7/8	0.885	22.5	16	-	10	3.5	29451	29451	30227
28156	28157	3/4"	-	1.115	28.3	21	-	10	3.5	31872	29452	12099
36490	36489	-	1-7/32	1.210	30.5	-	-	10	3.5	31872	29452	12099
28158	28159	1"	1-11/32	1.352	34.6	-	-	10	3.5	31872	29452	12099
28160	28161	1-1/4"	1-11/16	1.701	43.2	-	-	10	3.5	31872	29452	12099
28162	28163	1-1/2"	1-15/16	1.951	49.6	-	-	10	3.5	-	29452	12099
28165	28166	2"	2-3/8	2.416	61.5	-	-	10	3.5	-	29452	12099

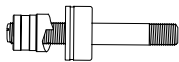
STANDARD – SLUG-SPLITTER KNOCKOUT PUNCHES 0.598" TO 2.520"

31117	31126	-	-	0.598	15.2	9	-	12	2.5	29451	29451	30227
04599	04598	-	-	0.638	16.2	-	16	12	2.5	29451	29451	30227
31119	31128	-	-	0.732	18.6	11	-	12	2.5	29451	29451	30227
31120	31129	-	-	0.803	20.4	13	20	12	2.5	29451	29451	30227
04602	04601	-	1	1.000	25.4	-	25	10	3.5	31872	29451	30227
04605	04603	-	-	1.280	32.5	-	32	10	3.5	31872	29452	12099
31122	31135	-	-	1.457	37.0	29	-	10	3.5	31872	29452	12099
04608	04607	-	-	1.595	40.5	-	40	10	3.5	31872	29452	12099
31123	31131	-	-	1.850	47.0	36	-	10	3.5	-	29452	12099
04611	04609	-	2	2.000	50.8	-	50	10	3.5	-	29452	12099
31124	31132	-	2 1/8	2.125	54.0	42	-	10	3.5	-	29452	12099
31125	31133	-	-	2.362	60.0	48	-	10	3.5	-	29452	12099
04614	04613	-	-	2.520	64.0	-	63	10	3.5	-	29452	12099

* 16 ga. stainless steel capacity with ratchet driver.

Slug-Splitter SC™ and Slug-Splitter Knockout Punches

PUNCH UNITS



SELF CENTERING – SLUG-SPLITTER SC™ KNOCKOUT PUNCHES 0.885" TO 2.416"

PUNCH UNIT - INCLUDES PUNCH, DIE & DRAW		HOLE SIZE			CAPACITY STAINLESS STEEL		WEIGHT		DRIVER				DRAW STUD
CATALOG NO.	UPC NO	CONDUIT & PIPE SIZE	IN	MM	GA	MM	LBS.	KG	1904	7804/7904	LS60*	7646/7625	
745R-1/2	30384	1/2"	7/8	22.5	16	1.5	.6	.27	x				30227
745H-1/2	29560	1/2"	7/8	22.5	10	3.5	.7	.32		x	x	x	29451
740H-1-7/32 Oil Tight	29563	-	1-7/32	30.5	10	3.5	1.2	.54		x	x	x	29452
745H-3/4	12318	3/4"	1-3/32	28.3	10	3.5	1.26	.57				x	29452
745H-1	12319	1"	1-11/32	34.6	10	3.5	1.51	.68				x	29452
745H-1-1/4	12320	1-1/4"	1-11/16	43.2	10	3.5	1.96	.89				x	29452
745H-1-1/2	12321	1-1/2"	1-15/16	49.6	10	3.5	2.49	1.13				x	29452
745H-2	12322	2"	2-3/8	61.5	10	3.5	3.69	1.67				x	29452

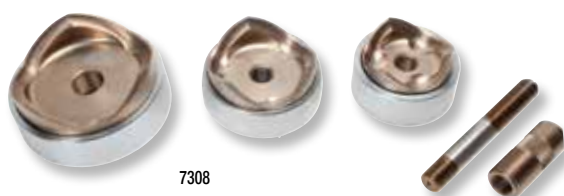
STANDARD – SLUG-SPLITTER KNOCKOUT PUNCHES 0.598" TO 2.520"

745M-15.2	12323	-	0.598	15.2	12	2.5	.98	.44				x	29451
745M-16.2	12324	-	0.638	16.2	12	2.5	.97	.44				x	29451
745M-18.6	12325	-	0.732	18.6	12	2.5	.98	.45				x	29451
745M-20.4	12326	-	0.803	20.4	12	2.5	.96	.44				x	29451
745M-25.4	12317	-	1.000	25.4	10	3.5	1.05	.48				x	29451
745M-32.5	12327	-	1.280	32.5	10	3.5	1.53	.69				x	29452
745M-37	12328	-	1.457	37	10	3.5	1.68	.76				x	29452
745M-40.5	12329	-	1.595	40.5	10	3.5	1.83	.83				x	29452
745M-47	12330	-	1.850	47	10	3.5	2.3	1.04				x	29452
745M-50.8	12331	-	2.000	50.8	10	3.5	2.91	1.32				x	29452
745M-54	12332	-	2.125	54	10	3.5	2.90	1.31				x	29452
745M-60	12333	-	2.362	60	10	3.5	3.63	1.65				x	29452
745M-64	12334	-	2.520	64	10	3.5	3.87	1.75				x	29452

* Battery-Powered or Corded Knockout Punch Driver

Large Diameter Knockouts for Stainless Steel

NEW PRODUCT



- Makes clean & accurate holes.
- For conduit sizes 2-1/2", 3", 3-1/2" & 4".
- Rated for punching in up to 10 gauge stainless steel.
- Excellent abrasion resistance for punching fiberglass and plastic.
- Kit includes punches, dies, draw stud and sleeve.
- High-Impact, rugged plastic carrying case (kit only).

CAT NO.	UPC NO.	DESCRIPTION
7308	06176	Kit Includes: Punches and Dies for 2-1/2", 3" & 4" Conduit, Draw Stud (29452), Sleeve (1557SS) and Case
745H-2-1/2	06183	Punch Unit for 2-1/2" Conduit Includes: Punch, Die & Draw Stud (29452)
745H-3	06190	Punch Unit for 3" Conduit Includes: Punch, Die & Draw Stud (29452)
745H-3-1/2	06206	Punch Unit for 3-1/2" Conduit Includes: Punch, Die & Draw Stud (29452)
745H-4	06213	Punch Unit for 4" Conduit Includes: Punch, Die & Draw Stud (29452)
1557SS	00785	Hydraulic Punch Sleeve (SS)
00622	00622	2-1/2" Replacement Punch
00626	00626	2-1/2" Replacement Die
00623	00623	3" Replacement Punch
00627	00627	3" Replacement Die
00624	00624	3-1/2" Replacement Punch
00629	00629	3-1/2" Replacement Die
00625	00625	4" Replacement Punch
00630	00630	4" Replacement Die

SLUG-BUSTER® HYDRAULIC KNOCKOUT KITS

Slug-Buster® Ram and Hand Pump Kits (Inch and Metric)



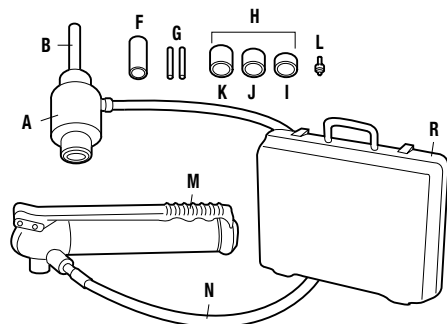
- Fast, easy and simple to operate.
- Compact design for field use on construction sites and maintenance jobs.
- Punches 10 times faster than wrench method.
- Will also drive 751 Cable Cutter head.
- Can be used with most standard round Slug-Buster® and Slug-Splitter SC™ punches (not 1/2", 9/16", 5/8").
- Can be used with non-round punches (adapter may be required).
- 3-foot hose
- Powerful 11-ton hydraulic ram.

CAT NO.	UPC NO.	DESCRIPTION	WEIGHT	
			LBS.	KG.
7646	15906	Driver with Hand Pump, Draw Studs, Spacer and Plastic Case	20	9.1
7306SB	34360	Driver, Hand Pump, Slug-Buster® Punches, Dies and Draw Studs for 1/2" through 2" Conduit, Adapter, Spacers, Kwik Stepper® Step Bit and Plastic Case	24	10.9
7310SB	34361	Driver, Hand Pump, Slug-Buster® Punches, Dies and Draw Studs for 1/2" through 2" and 2-1/2" through 4" Standard Conduit Size Punches, Dies and Draw Studs, Adapter, Spacers, Kwik Stepper® Step Bit and Plastic Case	54	24.5
7646Pg-SB	32799	Metric – Driver, Slug-Buster® Pg Punches, Dies and Draw Studs for 15.2 mm through 60.0 mm, Adapter, Spacers, Kwik Stepper® Step Bit and Plastic Case	24	10.9
38520	38520	Driver, Hand Pump, Slug-Buster® Punches and Draw Studs for 1/2" through 3" and 4" Conduit, Adapter, Spacers, Kwik Stepper® Step Bit and Plastic Case	48	21.8

STEEL CAPACITIES FOR CONDUIT SIZES

REQUIRED DRAW STUD AND ACCESSORIES	STANDARD PUNCHES AND SLUG-BUSTER®									
	1/2"	3/4"	1"	1-1/4"	1-1/2"	2"	2-1/2"	3"	3-1/2"	4"
3/4" Stud (2113B), 3/8" Stud (20963) & Spacers										
3/4" Stud (2113B), Long Spacer										
3/4" Stud (2113B), Short Spacer										
3/4" Stud (2113B)										
3/4" Stud (2113B), & Sleeve (03170)										

10 GA. MILD STEEL



RAM AND HAND PUMP HYDRAULIC DRIVER PARTS IDENTIFICATION

KEY	CAT. NO.	UPC NO.	DESCRIPTION	
	A	746	17091	Ram (includes Item B)
	B	2113B	10109	Draw Stud-3/4" x 5 3/8"
	F	1557AA	03170	Punch Sleeve
	G	20963	20963	Draw Stud-3/8" x 4.8"
	H	15908		Spacer Group (includes Items I, J and K)
	I	1924AA	03248	Spacer-Short
	J	1925AA	03249	Spacer-Medium
	K	1926AA	06904	Spacer-Long
	L	34410		Kwik Stepper® Step Bit 1/2"
	M	767	13284	Hydraulic Hand Pump
	N	06302	06302	High Pressure Hose-1/4" x 3'
	R	30206		Plastic Case

Slug-Buster® Ram and Hand Pump Kits Parts List

CAT NO.	UPC NO.	DESCRIPTION	HOLE SIZE				KIT CAT./UPC NO.				
			CONDUIT & PIPE SIZE	ACTUAL		7646/15906	7306SB/34360	7310SB/34361	7646PGSB/32799	38520	
				Ø INCH	Ø MM						
721-1/2	31756	1/2" Conduit Size Slug-Buster® Punch	1/2"	7/8	0.885	22.5		1	1	1	1
14722	14722	1/2" Conduit Size Die	1/2"	7/8	0.885	22.5		1	1	1	1
721-3/4	31757	3/4" Conduit Size Slug-Buster® Punch	3/4"	—	1.115	28.3		1	1		1
124AV	06972	3/4" Conduit Size Die	3/4"	—	1.115	28.3		1	1		1
721-1	31758	1" Conduit Size Slug-Buster® Punch	1"	—	1.362	34.6		1	1		1
126AV	04011	1" Conduit Size Die	1"	—	1.362	34.6		1	1		1
721-1-1/4	31759	1-1/4" Conduit Size Slug-Buster® Punch	1-1/4"	1-11/16	1.701	43.2		1	1		1
128AV	04013	1-1/4" Conduit Size Die	1-1/4"	1-11/16	1.701	43.2		1	1		1
721-1-1/2	31760	1-1/2" Conduit Size Slug-Buster® Punch	1-1/2"	1-15/16	1.951	49.6		1	1		1
440AV	04061	1-1/2" Conduit Size Die	1-1/2"	1-15/16	1.951	49.6		1	1		1
721-2	31761	2" Conduit Size Slug-Buster® Punch	2"	2-3/8	2.416	61.5		1	1		1
442AV	04063	2" Conduit Size Die	2"	2-3/8	2.416	61.5		1	1		1
1429AV	04175	2-1/2" Conduit Size Punch	2-1/2"	2-7/8	2.914	74.0			1		1
1430AV	04177	2-1/2" Conduit Size Die	2-1/2"	2-7/8	2.914	74.0			1		1
1431AV	04180	3" Conduit Size Punch	3"	3-1/2	3.539	89.9			1		1
1432AV	04183	3" Conduit Size Die	3"	3-1/2	3.539	89.9			1		1
2982AV	04653	3-1/2" Conduit Size Punch	3-1/2"	4	4.044	102.7			1		
2981AV	04652	3-1/2" Conduit Size Die	3-1/2"	4	4.044	102.7			1		
2984AV	04655	4" Conduit Size Punch	4"	4-1/2	4.544	115.4			1		1
2983AV	04654	4" Conduit Size Die	4"	4-1/2	4.544	115.4			1		1
31969	31969	Pg-9 Slug-Buster® Punch	—	—	0.598	15.2				1	
32002	32002	Pg-9 Die	—	—	0.598	15.2				1	
31970	31970	Pg-11 Slug-Buster® Punch	—	—	0.732	18.6				1	
32003	32003	Pg-11 Die	—	—	0.732	18.6				1	
31971	31971	Pg-13 Slug-Buster® Punch	—	—	0.803	20.4				1	
32004	32004	Pg-13 Die	—	—	0.803	20.4				1	
31973	31973	Pg-21 Slug-Buster® Punch	3/4"	—	1.115	28.3				1	
32006	32006	Pg-21 Die	3/4"	—	1.115	28.3				1	
36284	36284	Slug-Buster® Punch	—	1-7/32	1.210	30.5				1	
36279	36279	Die	—	1-7/32	1.210	30.5				1	
31975	31975	Pg-29 Slug-Buster® Punch	—	—	1.457	37.0				1	
32008	32008	Pg-29 Die	—	—	1.457	37.0				1	
31976	31976	Pg-36 Slug-Buster® Punch	—	—	1.850	47.0				1	
32009	32009	Pg-36 Die	—	—	1.850	47.0				1	
31978	31978	Pg-48 Slug-Buster® Punch	—	—	2.362	60.0				1	
32011	32011	Pg-48 Die	—	—	2.362	60.0				1	
746	17091	Ram (includes following item)					1	1	1	1	1
2113B	10109	Draw Stud-3/4" x 5 3/8"					1	1	1	1	1
1557AA	03170	Punch Sleeve					1	1	1	1	1
20963	20963	Draw stud-3/8" x 4.8"					1	1	1	1	1
15908	15908	Spacer Group (includes 1 ea. of following 3 items)					1	1	1	1	1
1924AA	03248	Spacer-Short					1	1	1	1	1
1925AA	03249	Spacer-Medium					1	1	1	1	1
1926AA	06904	Spacer-Long					1	1	1	1	1
34410	34410	Kwik Stepper® Step Bit 1/2"					1	1	1	1	1
767	13284	Hydraulic Hand Pump					1	1	1	1	1
06302	06302	High Pressure Hose – 1/4" x 3'					1	1	1	1	1
30206	30206	Plastic Case					1	1		1	
18402	18402	Steel case							1		1
25094	25094	Tray							1		

PUNCHES AND DIES

DRAW STUDS AND MISC.

Slug-Buster® Ram and Foot Pump Hydraulic Driver Kits



- Foot operation frees both hands to position punch.
- Punches 10 times faster than wrench method.
- Will also drive 751 Cable Cutter head.
- Powerful 11-ton hydraulic ram.
- Can be used with most standard round, Slug-Buster® and Slug-Splitter SC™ punch sizes. (Not 1/2", 9/16" 5/8")
- Can be used with non-round punches (adapter may be required).

CAT NO.	UPC NO.	DESCRIPTION	WEIGHT	
			LBS.	KG.
7625	25097	Driver, Foot Pump, Steel Case	37	17
7606SB	07173	Driver, Foot Pump, Slug-Buster® Punches, Dies and Draw Studs for 1/2" through 2" Conduit, Steel Case	42	19
7610SB	07174	Driver, Foot Pump, Slug-Buster® Punches, Dies & Draw Studs for 1/2" through 2" Conduit, Slug-Buster® Punches and 2 1/2" through 4" Conduit Standard Round Punches	60	27

STEEL CAPACITIES FOR CONDUIT SIZES

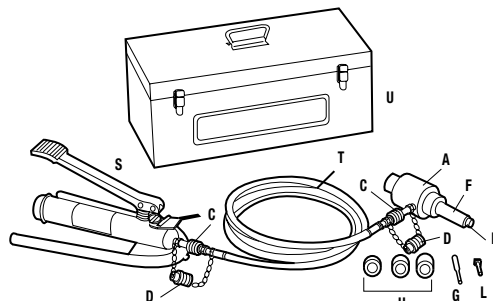
REQUIRED DRAW STUD AND ACCESSORIES	STANDARD PUNCHES AND SLUG-BUSTER®						STANDARD				SLUG-SPLITTER SC™					
	1/2"	3/4"	1"	1-1/4"	1-1/2"	2"	2-1/2"	3"	3-1/2"	4"	1/2"	3/4"	1"	1-1/4"	1-1/2"	2"
3/4" Stud (2113B), 3/8" Stud (20963) & Spacers	///															
3/4" Stud (2113B), Long Spacer		///														
3/4" Stud (2113B), Short Spacer					///											
3/4" Stud (2113B)						///										
3/4" Stud (2113B), & Sleeve (03170)								///								
7/16" Stud (29451)											///					
3/4" Stud (29452)												///	///	///	///	///

10 GA. MILD STEEL
 10 GA. STAINLESS STEEL

Ram and Foot Pump Kits Parts List

CAT NO.	UPC NO.	DESCRIPTION	HOLE SIZE				KIT CAT./UPC NO.			
			CONDUIT & PIPE SIZE	ACTUAL		7625/ 25097	7606SB/ 07173	7610SB/ 07174		
				Ø INCH	Ø MM					
PUNCHES AND DIES	721-1/2	31756	1/2" Conduit Size Slug-Buster® Punch	1/2"	7/8	0.885	22.5		1	1
	14722	14722	1/2" Conduit Size Die	1/2"	7/8	0.885	22.5		1	1
	721-3/4	31757	3/4" Conduit Size Slug-Buster® Punch	3/4"	—	1.115	28.3		1	1
	124AV	06972	3/4" Conduit Size Die	3/4"	—	1.115	28.3		1	1
	721-1	31758	1" Conduit Size Slug-Buster® Punch	1"	—	1.362	34.6		1	1
	126AV	04011	1" Conduit Size Die	1"	—	1.362	34.6		1	1
	721-1-1/4	31759	1-1/4" Conduit Size Slug-Buster® Punch	1-1/4"	1-11/16	1.701	43.2		1	1
	128AV	04013	1-1/4" Conduit Size Die	1-1/4"	1-11/16	1.701	43.2		1	1
	721-1-1/2	31760	1-1/2" Conduit Size Slug-Buster® Punch	1-1/2"	1-15/16	1.951	49.6		1	1
	440AV	04061	1-1/2" Conduit Size Die	1-1/2"	1-15/16	1.951	49.6		1	1
	721-2	31761	2" Conduit Size Slug-Buster® Punch	2"	2-3/8	2.416	61.5		1	1
	442AV	04063	2" Conduit Size Die	2"	2-3/8	2.416	61.5		1	1
	1429AV	04175	2-1/2" Conduit Size Punch	2-1/2"	2-7/8	2.914	74.0			1
	1430AV	04177	2-1/2" Conduit Size Die	2-1/2"	2-7/8	2.914	74.0			1
	1431AV	04180	3" Conduit Size Punch	3"	3-1/2	3.539	89.9			1
	1432AV	04183	3" Conduit Size Die	3"	3-1/2	3.539	89.9			1
	2982AV	04653	3-1/2" Conduit Size Punch	3-1/2"	4	4.044	102.7			1
	2981AV	04652	3-1/2" Conduit Size Die	3-1/2"	4	4.044	102.7			1
2984AV	04655	4" Conduit Size Punch	4"	4-1/2	4.544	115.4			1	
2983AV	04654	4" Conduit Size Die	4"	4-1/2	4.544	115.4			1	
DRAW STUDS AND MISC.	746	17091	(A) Ram (includes 1 ea. of items B, C, and D)					1	1	1
	2113B	10109	(B) Draw Stud—3/4" x 5 3/8"					1	1	1
	54167	54167	(C) Female Coupler—1/4"					1	1	1
	54168	54168	(D) Dust Plug					1	1	1
	1557AA	03170	(F) Punch Sleeve					1	1	1
	20963	20963	(G) Draw stud—3/8" x 4.8"					1	1	1
	15908	15908	(H) Spacer Group (includes 1 ea. of items I, J, and K)					1	1	1
	1924AA	03248	(I) Spacer-Short					1	1	1
	1925AA	03249	(J) Spacer-Medium					1	1	1
	1926AA	06904	(K) Spacer-Long					1	1	1
	34410	34410	(L) Kwik Stepper® Step Bit 1/2"					1	1	1
	1725	31353	(S) Hydraulic Foot Pump (includes 1 ea. – 54167 female coupler and 54168 dust plug)					1	1	1
	37729	37729	(T) High Pressure Hose Unit – 1/4" x 10'; filled with hydraulic oil; (includes the following 2 items)					1	1	1
	54169	54169	Couplers					2	2	2
	54170	54170	Dust Caps					2	2	2
23955	23955	(U) Steel case					1	1	1	
25094	25094	Tray					1	1	1	

RAM AND FOOT PUMP HYDRAULIC DRIVER PARTS IDENTIFICATION
(Match letters above to drawing.)



Quick Draw® Hydraulic Punch Driver and Kits

7706SB
Flex Driver Kit



7806SB
Quick Draw® Kit



7906SB
Quick Draw 90° Kit



The Quick Draw®, Quick Draw 90®, and Quick Draw® Flex feature:

- Compact, lightweight design for portability and fast, easy one-person operation.
- Develops 8 tons of hydraulic force for easy punching, even in 10-gauge stainless steel, depending on individual punch capacities.
- Quick Draw® is perfect for fast, straight-on front panel punching.
- Quick Draw 90®'s right angle driver head rotates over 180 degrees for maximum flexibility in tight working areas.
- Quick Draw® Flex allows unlimited driver orientation to simplify access to work area.
- Can be used with non-round punches within the capacity of the tool (adapter may be required).
- U.S. Patent #6,772,521.

CAT. NO.	UPC NO.	DESCRIPTION	WEIGHT	
			LBS.	KG.
7704SB	10475	Quick Draw® Flex Driver, 2 Draw Studs, 1 Adapter, 1 Spacer and Case	12.1	5.5
7706SB	10476	Standard – Quick Draw® Flex Driver, 1/2" through 2" Slug-Buster® Conduit Size Punches and Dies, 2 Draw Studs, 1 Adapter, 1 Spacer and Case	17.3	7.9
7804SB	34292	Quick Draw® Driver, 2 Draw Studs, 1 Adapter, 1 Spacer and Case	10	4.5
7806SB	34293	Standard – Quick Draw® Driver, 1/2" through 2" Slug-Buster® Conduit Size Punches and Dies 2 Draw Studs, 1 Adapter, 1 Spacer and Case	14	6.4
7804E	34291	Metric – Quick Draw® Driver, 2 Draw Studs, 1 Adapter, 1 Spacer and Case	9.4	4.3
7804ESB	35611	Metric – Quick Draw® Driver, Slug-Buster® Pg Punches and Dies 15.2 mm through 30.5 mm, 2 Draw Studs, 1 Adapter, 1 Spacer and Case	10.3	4.7
7804ISO	35614	Metric – Quick Draw® Driver, Slug-Buster® ISO Punches and Dies 16.2 mm through 40.5 mm, 2 Draw Studs, 1 Adapter, 1 Spacer and Case	11.4	5.2
7904SB	33794	Quick Draw 90° Driver, 2 Draw Studs, 1 Adapter, 1 Spacer and Case	10	4.5
7906SB	34300	Quick Draw 90° Driver, 1/2" through 2" Slug-Buster® Conduit Size Punches and Dies, Draw Studs, 1 Adapter, 1 Spacer and Case	14	6.4
7904E	34299	Metric – Quick Draw 90° Driver, 2 Draw Studs, 1 Adapter, 1 Spacer and Case	11	5.0
7904ESB	35615	Metric – Quick Draw 90° Driver, Slug-Buster® Pg Punches and Dies 15.2 mm through 30.5 mm, 2 Draw Studs, 1 Adapter, 1 Spacer and Case	11	5.0
7904ISO	35616	Metric – Quick Draw 90° Driver, Slug-Buster® ISO Punches and Dies 16.2 mm through 40.5 mm, 2 Draw Studs, 1 Adapter, 1 Spacer and Case	12.2	5.5
R 34983	34983	Plastic Case		

STEEL CAPACITIES FOR CONDUIT SIZES

REQUIRED DRAW STUD AND ACCESSORIES	STANDARD PUNCHES AND SLUG-BUSTER®							SLUG-SPLITTER SC™			
	1/2"	3/4"	1-7/32" OILTIGHT	1"	1-1/4"	1-1/2"	2"	1/2"	3/4"	1-7/32" OILTIGHT	1-1/4"
3/8" Draw Stud	10 GA. MILD STEEL										
Spacer & 7/16" Draw Stud								10 GA. STAINLESS STEEL			
Spacer & 3/4" Draw Stud		10 GA. MILD STEEL							10 GA. STAINLESS STEEL		
3/4" Draw Stud						10 GA. MILD STEEL					

10 GA. MILD STEEL
 10 GA. STAINLESS STEEL

Parts List for Quick Draw®, Quick Draw 90® and Quick Draw® Flex Kits

CAT NO.	UPC NO.	DESCRIPTION	HOLE SIZE				KIT CAT./UPC NO.										
			CONDUIT & PIPE SIZE	ACTUAL		7704SB/10475	7706SB/10476	7804E/34291	7804ESB/35611	7804ISO/35614	7804SB/34292	7806SB/34293	7904E/34299	7904ESB/35615	7904ISO/35616	7904SB/33794	7906SB/34300
				Ø INCH	Ø MM	10475	10476	34291	35611	35614	34292	34293	34299	35615	35616	33794	34300
721-1/2	31756	1/2" Conduit Size Slug-Buster® Punch	1/2"	7/8	0.885	22.5	✓		✓			✓		✓		✓	
14722	14722	1/2" Conduit Size Die	1/2"	7/8	0.885	22.5	✓		✓			✓		✓		✓	
721-3/4	31757	3/4" Conduit Size Slug-Buster® Punch	3/4"	—	1.115	28.3	✓					✓				✓	
124AV	06972	3/4" Conduit Size Die	3/4"	—	1.115	28.3	✓					✓				✓	
721-1	31758	1" Conduit Size Slug-Buster® Punch	1"	—	1.362	34.6	✓					✓				✓	
126AV	04011	1" Conduit Size Die	1"	—	1.362	34.6	✓					✓				✓	
721-1-1/4	31759	1-1/4" Conduit Size Slug-Buster® Punch	1-1/4"	1-11/16	1.701	43.2	✓					✓				✓	
128AV	04013	1-1/4" Conduit Size Die	1-1/4"	1-11/16	1.701	43.2	✓					✓				✓	
721-1-1/2	31760	1-1/2" Conduit Size Slug-Buster® Punch	1-1/2"	1-15/16	1.951	49.6	✓					✓				✓	
440AV	04061	1-1/2" Conduit Size Die	1-1/2"	1-15/16	1.951	49.6	✓					✓				✓	
721-2	31761	2" Conduit Size Slug-Buster® Punch	2"	2-3/8	2.416	61.5	✓					✓				✓	
442AV	04063	2" Conduit Size Die	2"	2-3/8	2.416	61.5	✓					✓				✓	
31696	31696	Pg-9 Slug-Buster® Punch	—	—	0.598	74.0				✓				✓			
32002	32002	Pg-9 Die	—	—	0.598	74.0				✓				✓			
31970	31970	Pg-11 Slug-Buster® Punch	—	—	0.732	89.9				✓				✓			
32003	32003	Pg-11 Die	—	—	0.732	89.9				✓				✓			
31971	31971	Pg-13 Slug-Buster® Punch	—	—	0.803	102.7				✓	✓			✓	✓		
32004	32004	Pg-13 Die	—	—	0.803	102.7				✓	✓			✓	✓		
31973	31973	Pg-21 Slug-Buster® Punch	3/4"	—	1.115	115.4				✓				✓			
32006	32006	Pg-21 Die	3/4"	—	1.115	115.4				✓				✓			
36284	36284	30.5 mm Slug-Buster® Punch	—	1-7/32	1.210	30.5				✓				✓			
36279	36279	30.5 mm Die	—	1-7/32	1.210	30.5				✓				✓			
35163	35163	ISO-16 Slug-Buster® Punch	—	—	0.638	16.2					✓						
35162	35162	ISO-16 Die	—	—	0.638	16.2					✓				✓		
35165	35165	ISO-25 Slug-Buster® Punch	—	1	1.000	25.4					✓						
35164	35164	ISO-25 Die	—	1	1.000	25.4					✓				✓		
35169	35169	ISO-32 Slug-Buster® Punch	—	—	1.280	32.5					✓						
35168	35168	ISO-32 Die	—	—	1.280	32.5					✓				✓		
35158	35158	ISO-40 Slug-Buster® Punch	—	—	1.595	40.5					✓						
35159	35159	ISO-40 Die	—	—	1.595	40.5					✓				✓		
34288	34288	Quick Draw® Hydraulic Punch Driver							✓	✓	✓	✓					
33796	33796	Quick Draw 90® Hydraulic Punch Driver										✓	✓	✓	✓	✓	
10383	10383	Quick Draw® Flex Driver					✓	✓									
1614SS	30043	Draw Stud - 3/8" x 2-13/16"					✓	✓	✓	✓	✓	✓	✓	✓	✓	✓	
31872	31872	Draw Stud - 3/4" x 4-1/8"					✓	✓	✓	✓	✓	✓	✓	✓	✓	✓	
1924AA	03248	Spacer - Short					✓	✓	✓	✓	✓	✓	✓	✓	✓	✓	
33967	33967	Stud Adapter - 3/8"					✓	✓	✓	✓	✓	✓	✓	✓	✓	✓	
35202	35202	Plastic Case							✓	✓		✓	✓	✓			
34983	34983	Plastic Case								✓	✓				✓	✓	
10391	10391	Plastic Case					✓	✓									

PUNCHES AND DIES

DRAW STUDS AND MISC.

OPTIONAL ACCESSORIES FOR 7806SB, 7804E, 7804ESB, 7804ISO, 7906SB, 7904E, 7904ESB AND 7904ISO KITS (NOT INCLUDED IN KITS)

CAT. NO.	UPC NO.	DESCRIPTION
29451	29451	7/16" (11.1 mm) Stainless Steel Draw Stud

SLUG-BUSTER® KNOCKOUT KITS

Slug-Buster® Ratchet Punch Driver Kits



- Time-saving ball bearing head punches faster than wrench method.
- Requires less than half the force of conventional ratchet drivers.
- Punches up through 10 gauge (3.5 mm) mild steel with Greenlee Standard and Slug-Buster® punches; and 16 gauge (1.5 mm) stainless steel with Greenlee Slug-Splitter SC™ punches.
- Ratchet action allows for use in confined areas.
- Unique design eliminates stud rotation during punching – lowers the strain on studs.
- Steel carrying case.

CAT NO.	UPC NO.	DESCRIPTION	WEIGHT	
			LBS.	KG.
1904	30216	Basic High Leverage Ratchet Driver with Three Draw Studs and Case	14	6.4
1906SB	34357	High Leverage Ratchet Driver with 1/2" through 2" Slug-Buster® Conduit Size Punches, Dies, Draw Studs and Case	20	9.1

	CAT. NO.	UPC NO.	DESCRIPTION	HOLE SIZE						KIT CAT./UPC NO.	
				CONDUIT & PIPE SIZE	ACTUAL			CAPACITY MILD STEEL		1904/ 30216	1906SB/ 34357
					Ø INCH	Ø MM	GA	MM			
PUNCHES AND DIES	721-1/2	31756	1/2" Conduit Size Slug-Buster® Punch	1/2"	7/8	0.885	22.5	10	3.5		✓
	14722	14722	1/2" Conduit Size Die	1/2"	7/8	0.885	22.5	10	3.5		✓
	721-3/4	31757	3/4" Conduit Size Slug-Buster® Punch	3/4"	—	1.115	28.3	10	3.5		✓
	124AV	06972	3/4" Conduit Size Die	3/4"	—	1.115	28.3	10	3.5		✓
	721-1	31758	1" Conduit Size Slug-Buster® Punch	1"	—	1.362	34.6	10	3.5		✓
	126AV	04011	1" Conduit Size Die	1"	—	1.362	34.6	10	3.5		✓
	721-1-1/4	31759	1-1/4" Conduit Size Slug-Buster® Punch	1-1/4"	1-11/16	1.701	43.2	10	3.5		✓
	128AV	04013	1-1/4" Conduit Size Die	1-1/4"	1-11/16	1.701	43.2	10	3.5		✓
	721-1-1/2	31760	1-1/2" Conduit Size Slug-Buster® Punch	1-1/2"	1-15/16	1.951	49.6	10*	3.5		✓
	440AV	04061	1-1/2" Conduit Size Die	1-1/2"	1-15/16	1.951	49.6	10*	3.5		✓
721-2	31761	2" Conduit Size Slug-Buster® Punch	2"	2-3/8	2.416	61.5	10*	3.5		✓	
442AV	04063	2" Conduit Size Die	2"	2-3/8	2.416	61.5	10*	3.5		✓	
DRAW STUDS AND MISC.	12097	12097	Draw Stud – 3/8" x 3-1/2"							✓	✓
	12099	12099	Draw Stud – 3/4" x 4-3/4"							✓	✓
	30227	30227	Draw Stud – 7/16" x 3-5/8"							✓	✓
	30228	30228	Steel Case							✓	✓
	20495	20495	Ratchet wrench only							✓	✓
	30225	30225	Handle							✓	✓

Slug-Buster® Knockout Kit with Ratchet Wrench



- 1" Hex Ratchet Wrench allows use with both 3/8" (9.5 mm) and 3/4" (19.1 mm) draw studs.
- High-impact, rugged plastic carrying case.

CAT NO.	UPC NO.	DESCRIPTION	CAPACITY			
			MILD STEEL WEIGHT			
			GA	MM	LBS.	KG.
7238SB	34757	1/2" – 2" Conduit Size Slug-Buster® Knockout Punch Kit	10	3.5	10	4.54

7238SB/34757 SLUG-BUSTER® KNOCKOUT PUNCH KIT INCLUDES

CAT NO.	UPC NO.	DESCRIPTION	HOLE SIZE ACTUAL		
			Ø INCH		Ø MM.
34941	34941	Ratchet wrench – 1" Hex			
721-1/2	31756	1/2" Conduit Size Punch	7/8	.885	22.5
14722	14722	1/2" Conduit Size Die	7/8	.885	22.5
721-3/4	31757	3/4" Conduit Size Punch	—	1.115	28.3
124AV	06972	3/4" Conduit Size Die	—	1.115	28.3
721-1	31758	1" Conduit Size Punch	—	1.362	34.6
126AV	04011	1" Conduit Size Die	—	1.362	34.6
721-1-1/4	31759	1-1/4" Conduit Size Punch	—	1.701	43.2
128AV	04013	1-1/4" Conduit Size Die	—	1.701	43.2
721-1-1/2	31760	1-1/2" Conduit Size Punch	—	1.951	49.6
440AV	04061	1-1/2" Conduit Size Die	—	1.951	49.6
721-2	31761	2" Conduit Size Punch	2-3/8	2.416	61.5
442AV	04063	2" Conduit Size Die	2-3/8	2.416	61.5
00042	00042	Ball Bearing Draw Stud with 1" Hex Head—3/8" x 1-5/8"			
304AVBB	04042	Ball Bearing Draw Stud—3/4" x 2-15/16"			
34758	34758	Plastic Case			

Slug-Buster® Manual Knockout Kits

7235BB



- Assortment of commonly used Slug-Buster® knockout punches, packaged to meet the contractor's needs.
- High-impact, rugged plastic carrying case.

CAT NO.	UPC NO.	DESCRIPTION	CAPACITY			
			MILD STEEL WEIGHT			
GA	MM	LBS.	KG.			
7235BB	32013	1/2" - 1-1/4" Conduit Size Manual Slug-Buster® Knockout Punch Kit	10	3.5	2.7	1.2
7237BB	32014	1-1/2" and 2" Conduit Size Manual Slug-Buster® Knockout Punch Kit	10	3.5	5.2	2.4

7235BB/32013 SLUG-BUSTER® KNOCKOUT PUNCH KIT INCLUDES

CAT NO.	UPC NO.	DESCRIPTION	HOLE SIZE ACTUAL		
			Ø INCH		Ø MM
721-1/2	31756	1/2" Conduit Size Punch	7/8	.885	22.5
14722	14722	1/2" Conduit Size Die	7/8	.885	22.5
00042	00042	Draw Stud-3/8" x 1-5/8"			
721-3/4	31757	3/4" Conduit Size Punch	—	1.115	28.3
124AV	06972	3/4" Conduit Size Die	—	1.115	28.3
721-1	31758	1" Conduit Size Punch	—	1.362	34.6
126AV	04011	1" Conduit Size Die	—	1.362	34.6
721-1-1/4	31759	1-1/4" Conduit Size Punch	—	1.701	43.2
128AV	04013	1-1/4" Conduit Size Die	—	1.701	43.2
249AVBB	04040	Draw Stud-3/4" x 2-1/8"			
31880	31880	Plastic Case			

7237BB



7237BB/32014 SLUG-BUSTER® KNOCKOUT PUNCH KIT INCLUDES

CAT NO.	UPC NO.	DESCRIPTION	HOLE SIZE ACTUAL		
			Ø INCH		Ø MM
721-1-1/2	31760	1-1/2" Conduit Size Punch	—	1.951	49.6
440AV	04061	1-1/2" Conduit Size Die	—	1.951	49.6
721-2	31761	2" Conduit Size Punch	2-3/8	2.416	61.5
442AV	04063	2" Conduit Size Die	2-3/8	2.416	61.5
304AVBB	04042	Draw Stud-3/4" x 2-15/16"			
32012	32012	Plastic Case			

Slug-Buster® Knockout Kit with Ratchet Wrench - Metric

36690



- 1" (25.4 mm) hex ratchet wrench allows use with both 3/8" (9.5 mm) and 3/4" (19.1 mm) draw studs.
- 3/8" (9.7 mm) Kwik Stepper® step bit included.
- High-impact, rugged plastic carrying case.

CAT NO.	UPC NO.	DESCRIPTION	WEIGHT	
			LBS.	KG.
36690	36690	Pg-9 through Pg-21 and 30.5 mm Manual Slug-Buster® Metric Knockout Punch Kit	4.7	2.1
36691	36691	Pg-9 through Pg-48 and 30.5 mm Manual Slug-Buster® Metric Knockout Punch Kit	9	4.1
36692	36692	ISO-16 through ISO-40 Manual Slug-Buster® Metric Knockout Punch Kit	5.6	2.5
36693	36693	ISO-16 through ISO-63 Manual Slug-Buster® Metric Knockout Punch Kit	9	4.1

CAT NO.	UPC NO.	DESCRIPTION	HOLE SIZE				KIT CAT./UPC NO.				
			ACTUAL		CAPACITY MILD STEEL		36690	36691	36692	36993	
			IN.	MM	GA	MM					
31969	31969	Pg-9 Slug-Buster® Punch	—	0.598	15.2	14	2.0	✓	✓		
32002	32002	Pg-9 Die	—	0.598	15.2	14	2.0	✓	✓		
31970	31970	Pg-11 Slug-Buster® Punch	—	0.732	18.6	14	2.0	✓	✓		
32003	32003	Pg-11 Die	—	0.732	18.6	14	2.0	✓	✓		
31971	31971	Pg-13 Slug-Buster® Punch	—	0.803	20.4	14	2.0	✓	✓	✓	✓
32004	32004	Pg-13 Die	—	0.803	20.4	14	2.0	✓	✓	✓	✓
721-1/2	31756	Pg-16 Slug-Buster® Punch	7/8	0.885	22.5	10	3.5	✓	✓		
14722	14722	Pg-16 Die	7/8	0.885	22.5	10	3.5	✓	✓		
31973	31973	Pg-21 Slug-Buster® Punch	—	1.115	28.3	14	2.0	✓	✓		
32006	32006	Pg-21 Die	—	1.115	28.3	14	2.0	✓	✓		
36284	36284	30.5 mm Slug-Buster® Punch	1-7/32	1.210	30.5	14	2.0	✓	✓		
36279	36279	30.5 mm Die	1-7/32	1.210	30.5	14	2.0	✓	✓		
31975	31975	Pg-29 Slug-Buster® Punch	—	1.457	37.0	10	3.5		✓		
32008	32008	Pg-29 Die	—	1.457	37.0	10	3.5		✓		
31976	31976	Pg-36 Slug-Buster® Punch	—	1.850	47.0	10	3.5		✓		
32009	32009	Pg-36 Die	—	1.850	47.0	10	3.5		✓		
31978	31978	Pg-48 Slug-Buster® Punch	—	2.362	60.0	10	3.5		✓		
32011	32011	Pg-48 Die	—	2.362	60.0	10	3.5		✓		
35163	35163	ISO-16 Slug-Buster® Punch	—	0.638	16.2	14	2.0			✓	✓
35162	35162	ISO-16 Die	—	0.638	16.2	14	2.0			✓	✓
35165	35165	ISO-25 Slug-Buster® Punch	1	1.000	25.4	14	2.0			✓	✓
35164	35164	ISO-25 Die	1	1.000	25.4	14	2.0			✓	✓
35169	35169	ISO-32 Slug-Buster® Punch	—	1.280	32.5	10	3.5			✓	✓
35168	35168	ISO-32 Die	—	1.280	32.5	10	3.5			✓	✓
35158	35158	ISO-40 Slug-Buster® Punch	—	1.595	40.5	10	3.5			✓	✓
35159	35159	ISO-40 Die	—	1.595	40.5	10	3.5			✓	✓
35160	35160	ISO-50 Slug-Buster® Punch	2	2.000	50.8	10	3.5				✓
35161	35161	ISO-50 Die	2	2.000	50.8	10	3.5				✓
35167	35167	ISO-63 Slug-Buster® Punch	2-1/2	2.500	63.5	10	3.5				✓
35166	35166	ISO-63 Die	2-1/2	2.500	63.5	10	3.5				✓
249AVBB	04040	Draw Stud – 3/4" x 2-1/8"								✓	
304AVBB	04042	Draw Stud – 3/4" x 2-15/16"							✓		✓
36018	36018	Kwik Stepper® Step Bit 9.7mm						✓	✓	✓	✓
34941	34941	Ratchet Wrench – 1" Hex						✓	✓	✓	✓
00042	00042	Ball Bearing Drive Nut with 1" Hex Head, 3/8" x 3"						✓	✓	✓	✓
36685	36685	Plastic Case						✓	✓	✓	✓

Slug-Buster® Knockout Punch Kits for Ratchet/Hydraulic Drivers



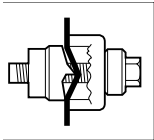
- Packaged in carton for easy insertion into your existing case.
- Replacement punch kits for battery-powered, hydraulic and ratchet drivers.

CAT NO.	UPC NO.	DESCRIPTION	WEIGHT	
			LBS.	KG.
7216	32017	1/2" - 2" Conduit Size Knockout Punch and Die Kit	5.5	2.5
7214E	32398	Pg-9 through 30.5 mm Slug-Buster® Pg Punch Kit	1.3	.6
7215E	32803	ISO-16 through ISO-40 Slug-Buster® ISO Punch Kit	5.1	2.3
35617	35617	ISO-16 through ISO-40 Slug-Buster® ISO Punch Kit	1.6	.7
06892	06892	ISO-16 through ISO-63 Slug-Buster® ISO Punch Kit	5.5	2.5

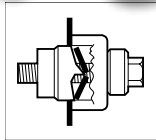
CAT NO.	UPC NO.	DESCRIPTION	HOLE SIZE				KIT CAT./UPC NO.						
			CONDUIT & PIPE SIZE	ACUTAL		CAPACITY MILD STEEL		7216/32017	7214E/32398	7215E/32803	35617	06892	
				IN.	MM	GA	MM						
721-1/2	31756	1/2" Conduit Size Punch	1/2"	7/8	.885	22.5	10	3.5	✓	✓	✓		
14722	14722	1/2" Conduit Size Die	1/2"	7/8	.885	22.5	10	3.5	✓	✓	✓		
721-3/4	31757	3/4" Conduit Size Punch	3/4"	—	1.115	28.3	10	3.5	✓				
06972	06972	3/4" Conduit Size Die	3/4"	—	1.115	28.3	10	3.5	✓				
721-1	31578	1" Conduit Size Punch	1"	—	1.362	34.6	10	3.5	✓			✓	
126AV	04011	1" Conduit Size Die	1"	—	1.362	34.6	10	3.5	✓			✓	
721-1-1/4	31759	1-1/4" Conduit Size Punch	1-1/4"	—	1.701	43.2	10	3.5	✓				
128AV	04013	1-1/4" Conduit Size Die	1-1/4"	—	1.701	43.2	10	3.5	✓				
721-1-1/2	31760	1-1/2" Conduit Size Punch	1-1/2"	—	1.951	49.6	10	3.5	✓				
440AV	04061	1-1/2" Conduit Size Die	1-1/2"	—	1.951	49.6	10	3.5	✓				
721-2	31761	2" Conduit Size Punch	2"	2-3/8	2.416	61.5	10	3.5	✓				
442AV	04063	2" Conduit Size Die	2"	2-3/8	2.416	61.5	10	3.5	✓				
31969	31969	Pg-9 Slug-Buster Punch	—	—	.598	15.2	14	2.0		✓	✓		
32002	32002	Pg-9 Slug-Buster Die	—	—	.598	15.2	14	2.0		✓	✓		
31970	31970	Pg-11 Slug-Buster Punch	—	—	.732	18.6	14	2.0		✓	✓		
32003	32003	Pg-11 Slug-Buster Die	—	—	.732	18.6	14	2.0		✓	✓		
31971	31971	Pg-13 Slug-Buster Punch	—	—	.803	20.4	14	2.0		✓	✓	✓	✓
32004	32004	Pg-13 Slug-Buster Die	—	—	.803	20.4	14	2.0		✓	✓	✓	✓
31973	31973	Pg-21 Slug-Buster Punch	—	—	1.115	28.3	14	2.0		✓	✓		
32006	32006	Pg-21 Slug-Buster Die	—	—	1.115	28.3	14	2.0		✓	✓		
36284	36284	30.5 mm Punch	—	1-7/32	1.210	30.5	14	3.5		✓	✓		
36279	36279	30.5 mm Die	—	1-7/32	1.210	30.5	14	3.5		✓	✓		
31975	31975	Pg-29 Slug-Buster Punch	—	—	1.457	37.0	10	3.5			✓		
32008	32008	Pg-29 Slug-Buster Die	—	—	1.457	37.0	10	3.5			✓		
31976	31976	Pg-36 Slug-Buster Punch	—	—	1.850	47.0	10	3.5			✓		
32009	32009	Pg-36 Slug-Buster Die	—	—	1.850	47.0	10	3.5			✓		
31978	31978	Pg-48 Slug-Buster Punch	—	—	2.362	60.0	10	3.5			✓		
32011	32011	Pg-48 Slug-Buster Die	—	—	2.362	60.0	10	3.5			✓		
35163	35163	ISO-16 Punch	—	—	0.638	16.2	14	2.0				✓	✓
35162	35162	ISO-16 Die	—	—	0.638	16.2	14	2.0				✓	✓
35165	35165	ISO-25 Punch	—	1	1.000	25.4	14	2.0				✓	✓
35164	35164	ISO-25 Die	—	1	1.000	25.4	14	2.0				✓	✓
35169	35169	ISO-32 Punch	—	—	1.280	32.5	10	3.5				✓	✓
35169	35169	ISO-32 Die	—	—	1.280	32.5	10	3.5				✓	✓
35158	35158	ISO-40 Punch	—	—	1.595	40.5	10	3.5				✓	✓
35158	35158	ISO-40 Die	—	—	1.595	40.5	10	3.5				✓	✓
35160	35160	ISO-50 Punch	—	2	2.000	50.8	10	3.5					✓
35160	35160	ISO-50 Die	—	2	2.000	50.8	10	3.5					✓
35167	35167	ISO-63 Punch	—	—	2.520	64.0	10	3.5					✓
35167	35167	ISO-63 Die	—	—	2.520	64.0	10	3.5					✓

SLUG-BUSTER® KNOCKOUTS

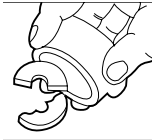
Slug-Buster® Knockout Punches 0.492" to 2.520"



Unique Slug-Buster® punch design creases slug as the punch is drawn into the die.



Slug is split in half as punching operation is completed.



Split slugs fall free from the die and stud.

- The contractor's choice – worldwide.
- Unique punch profile also splits slugs for easier slug removal.
- Use with battery-powered, hydraulic, ratchet or manual drivers.
- Uses standard Greenlee dies and draw studs.
- Slug Buster® punches available in sizes up thru 2.52" (64.0 mm).

SPECIFICATIONS

Capacity Mild steel up through 10 gauge (3.5 mm).
Application Punch mild steel, aluminum, fiberglass and plastic.
Hole Sizes Conduit Sizes- Hole size is outside diameter of US conduit sizes. i.e 1/2" conduit actually 7/8".
 Pg Sizes-European standard pipe sizes.
 ISO Sizes- International Standards Organization pipe sizes.
Operation Battery, hydraulic, ratchet or manual drivers. When used with ratchet, hydraulic or battery drivers, buy the punch and die only; the draw stud is part of the driver kit.

PUNCH UNIT

REPLACEMENT PARTS

PUNCH UNIT INCLUDES		CONDUIT & PIPE SIZE	HOLE SIZE ACTUAL		CAPACITY MILD STEEL		WEIGHT		REPLACEMENT PUNCH		REPLACEMENT DIE		REPLACEMENT MANUAL DRAW STUD		
CAT NO.	UPC NO.		Ø INCH	Ø MM	GA.	MM	LBS	G	CAT. NO.	UPC NO.	CAT. NO.	UPC NO.	CAT. NO.	UPC NO.	
06727	06727	—	—	0.492	12.5	16	1.5	0.3	137	06728	06728	06729	06729	1675AV	04218
12356	12356	—	1/2	—	12.7	16	1.5	0.15	69	12360	12360	12358	12358	1675AV	04218
12357	12357	—	9/16	—	14.3	16	1.5	0.16	73.5	12359	12359	12361	12361	1675AV	04218
7211EBB-15.2	31989	—	—	0.598	15.2	14	2.0	0.3	137	31969	31969	32002	32002	00042	00042
35177	35177	—	—	0.638	16.2	14	2.0	0.3	137	35163	35163	35162	35162	00042	00042
12335	12335	—	11/16	—	17.5	14	2.0	0.3	177	12337	12337	12336	12336	00042	00042
7211EBB-18.6	31990	—	—	0.732	18.6	14	2.0	0.3	137	31970	31970	32003	32003	00042	00042
12307	12307	—	3/4	—	19.1	14	2.0	0.4	183	12306	12306	12305	12305	00042	00042
7211EBB-20.4	31991	—	—	0.803	20.4	14	2.0	0.3	137	31971	31971	32004	32004	00042	00042
7211BB-1/2	31962	1/2"	7/8	0.885	22.5	10	3.5	0.3	137	721-1/2	31756	14722	14722	00042	00042
12338	12338	—	15/16	—	23.8	14	2.0	0.5	253	12340	12340	12339	12339	00042	00042
◇	◇	1/2"	7/8	0.885	22.5	10	3.5	—	—	721-1/2P◇	01980	14722P◇	01992	00042P	06678
35178	35178	—	1	1.000	25.4	14	2.0	0.5	227	35165	35165	35164	35164	00042P	06678
12341	12341	—	1-1/16	—	27	14	2.0	0.6	261	12343	12343	12342	12342	00042	00042
7211BB-3/4	31963	3/4"	—	1.115	28.3	10	3.5	0.8	363	721-3/4	31757	124AV	06972	249AVBB	04040
◇	◇	3/4"	—	1.115	28.3	10	3.5	—	—	721-3/4P◇	01981	124AVP◇	01993	249AVBBP◇	01987
7211EBB-28.3	31993	—	—	1.115	28.3	14	2.0	0.5	227	31973	31973	32006	32006	00042	00042
60246	60246	—	1-7/32	1.210	30.5	10	3.5	0.6	273	60237	60237	36278	36278	249AVBB	04040
36508	36508	—	1-7/32	1.210	30.5	14	2.0	0.6	273	36284	36284	36279	36279	00042	00042
12308	12308	—	1-1/4	—	31.8	16	1.5	0.7	326.5	12309	12309	12310	12310	00042	00042
35179	35179	—	—	1.280	32.5	10	3.5	0.8	363	35169	35169	35168	35168	249AVBB	04040
12344	12344	—	1-5/16	—	33.4	16	1.5	0.7	345	12346	12346	12345	12345	00042	00042
7211BB-1	31964	1"	—	1.362	34.6	10	3.5	1	454	721-1	31758	126AV	04011	249AVBB	04040
◇	◇	1"	—	1.362	34.6	10	3.5	—	—	721-1P◇	01982	126AVP◇	01994	249AVBBP◇	01987
12304	12304	—	1-3/8	—	34.9	10	3.0	1.1	507.5	12303	12303	12302	12302	04040	04040
7211EBB-37	31995	—	—	1.457	37.0	10	3.5	1.2	545	31975	31975	32008	32008	249AVBB	04040
12313	12313	—	1-1/2	—	38.1	10	3.0	1.2	559	12312	12312	12311	12311	04040	04040
35180	35180	—	—	1.595	40.5	10	3.5	1.2	545	35158	35158	35159	35159	249AVBB	04040
12347	12347	—	1-5/8	—	41.3	10	3.0	1.3	610.25	12349	12349	12348	12348	04040	04040
7211BB-1-1/4	31965	1-1/4"	—	1.701	43.2	10	3.5	1.3	590	721-1-1/4	31759	128AV	04013	249AVBB	04040
12316	12316	—	1-3/4	—	44.5	10	3.0	1.4	661.5	12315	12315	12314	12314	04040	04040
◇	◇	1-1/4"	—	1.701	43.2	10	3.5	—	—	721-1-1/4P◇	01983	128AVP◇	01995	249AVBBP◇	01987
7211EBB-47	31996	—	—	1.850	47.0	10	3.5	1.9	862	31976	31976	32009	32009	304AVBB	04042
12350	12350	—	1-7/8	—	47.6	10	3.0	1.8	853.5	12354	12354	12352	12352	04042	04042
7211BB-1-1/2	31966	1-1/2"	—	1.951	49.6	10	3.5	2.1	953	721-1-1/2	31760	440AV	04061	304AVBB	04042
◇	◇	1-1/2"	—	1.951	49.6	10	3.5	—	—	721-1-1/2P◇	01984	440AVP◇	01996	304AVBBP◇	01988
35181	35181	—	2	2.000	50.8	10	3.5	2.3	1043	35160	35160	35161	35161	304AVBB	04042
36171	36171	—	2-1/8	2.125	54.0	10	3.5	2.5	1134	36172	36172	36173	36173	304AVBB	04042
12351	12351	—	2-1/4	—	57.2	10	3.0	2.9	1336	12355	12355	12353	12353	04042	04042
7211EBB-60	31998	—	—	2.362	60.0	10	3.5	2.8	1270	31978	31978	32011	32011	304AVBB	04042
7211BB-2	31967	2"	2-3/8	2.416	61.5	10	3.5	3.2	1452	721-2	31761	442AV	04063	304AVBB	04042
◇	◇	2"	2-3/8	2.416	61.5	10	3.5	—	—	721-2P◇	01985	442AVP◇	01997	304AVBBP◇	01988
35182	35182	—	—	2.520	64.0	10	3.5	3.4	1542	35167	35167	35166	35166	304AVBB	04042

◇ Individually Packaged in Point of Purchase clamshell for display opportunities

Slug-Buster SC® (Self-Centering)



- Save time and ensure accuracy! Self-centering punch aligns itself on pilot hole.
- No need to draw crosshairs or line up die alignment marks.
- Unique punch also splits slugs for easier slug removal.
- US Patent No. 6,973,729



PUNCH UNIT		CONDUIT & PIPE SIZE	HOLE SIZES		WEIGHT OF PUNCH UNIT		PUNCH ONLY		DIE ONLY		STUD ONLY	
CAT NO.	UPC NO.		INCH	MM	LBS.	G	CAT NO.	UPC NO.	CAT NO.	UPC NO.	CAT NO.	UPC NO.
77U-1/2*	10801	1/2"	.885	22.2	0.3	137	77P-1/2	11361	14722	14722	00042	00042
77U-3/4*	10802	3/4"	1.115	28.3	0.8	363	77P-1/2P*	11261	14722P*	01992	00042	00042
10807*	10807	-	1.21	30.5	0.9	408	77P-3/4	11362	124AV	06972	249AVBB	04040
77U-1*	10803	1"	1.362	34.6	1	454	77-3/4P*	11262	124AVP*	01993	249AVBBP*	01987
77U-1-1/4*	10804	1-1/4"	1.701	43.2	1.3	590	11357	11357	36278	36278	249AVBB	04040
77U-1-1/2*	10805	1-1/2"	1.951	49.6	2.1	953	77P-1	11363	126AV	04011	294AVBB	04040
77U-2*	10806	2"	2.416	61.4	2.3	1043	77P-1P*	11263	126AVP*	01994	249AVBBP	01987
10800	10800	1/2"-2" Kit	-	-	-	-	77P-1-1/4	11364	128AV	04013	249AVBB	04040
							77P-1-1/4P*	11264	128AVP*	01995	249AVBBP*	01987
							77P-1-1/2	11365	440AV	04061	304AVBB	04042
							77P-1-1/2P*	11265	440AVP*	01996	304AVBBP*	01988
							77P-2	11366	442AV	04063	304AVBB	04042
							77P-2P*	11266	442AVP*	01997	304AVBBP*	01988

*POP Packaged

10800 SLUG-BUSTER SC® KNOCKOUT KIT INCLUDES

CAT NO.	UPC NO.	DESCRIPTION	CONDUIT SIZE	HOLE SIZES
77P-1/2	11361	1/2" Punch Buster, SC	1/2"	.885
14722	14722	1/2" Die Rd.	1/2"	.885
77P-3/4	11362	3/4" Punch Buster, SC	3/4"	1.115
124AV	06972	3/4" Die Rd.	3/4"	1.115
77P-1	11363	1" Punch Buster, SC	1"	1.362
126AV	04011	1" Die Rd.	1"	1.362
77P-1-1/4	11364	1-1/4" Punch Buster, SC	1-1/4"	1.701
128AV	04013	1-1/4" Die Rd.	1-1/4"	1.701
77P-1-1/2	11365	1-1/2" Punch Buster, SC	1-1/2"	1.951
440AV	04061	1-1/2" Die Rd.	1-1/2"	1.951
77P-2	11366	2" Punch Buster, SC	2"	2.416
442AV	04063	2" Die Rd.	2"	2.416

STANDARD HYDRAULIC KNOCKOUT PUNCH KITS

Standard Round Manual Industrial Punch Kit (continued)



- Fast, easy and simple to operate.
- Compact design for field use on construction sites and maintenance jobs.
- Punches 10 times faster than wrench method.
- Will also drive 751 Cable Cutter head.
- Can be used with most standard round Slug-Buster® and Slug-Splitter SC™ punches (not 1/2", 9/16", 5/8").
- Can be used with non-round punches (adapter may be required).
- 3-foot hose
- Powerful 11-ton hydraulic ram.

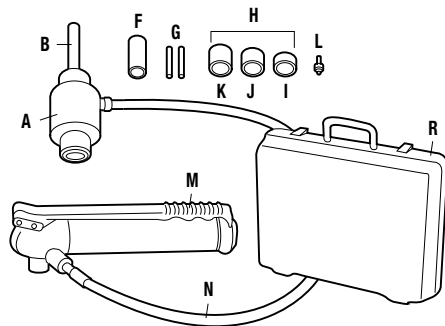
CAT NO.	UPC NO.	DESCRIPTION	WEIGHT	
			LBS.	KG.
7306	15909	Driver, Hand Pump, Standard Punches, Dies and Draw Studs for 1/2" through 2" Conduit, Plastic Case	24	10.9
7310	15910	Driver, Hand Pump, Standard Punches, Dies and Draw Studs and Spacers for 1/2" through 4" Conduit, Plastic Case	54	24.5
7646Pg	27433	Metric – Driver, Hand Pump, Standard Pg Punches, Dies and Draw Studs and Spacers for 15.2 mm through 60.0 mm, Plastic Case	24	10.9
7304	02815	Standard Punch and Die Kit (no draw studs) for 2-1/2" through 4" Conduit, Plastic Case	21	9.5
38456	38456	Driver, Hand Pump, Standard Punches, Dies and Draw Studs and Spacers for 1/2" through 3" and 4" Conduit, Plastic Case	48.4	22

STEEL CAPACITIES FOR CONDUIT SIZES

REQUIRED DRAW STUD AND ACCESSORIES	STANDARD PUNCHES AND SLUG-BUSTER®									
	1/2"	3/4"	1"	1-1/4"	1-1/2"	2"	2-1/2"	3"	3-1/2"	4"
3/4" Stud (2113B), 3/8" Stud (20963) & Spacers										
3/4" Stud (2113B), Long Spacer										
3/4" Stud (2113B), Short Spacer										
3/4" Stud (2113B)										
3/4" Stud (2113B), & Sleeve (03170)										

10 GA. MILD STEEL

RAM AND HAND PUMP HYDRAULIC DRIVER PARTS IDENTIFICATION



KEY	CAT. NO.	UPC NO.	DESCRIPTION
R	A	746	Ram (includes Item B)
R	B	2113B	Draw Stud–3/4" x 5 3/8"
R	F	1557AA	Punch Sleeve
R	G	20963	Draw Stud–3/8" x 4.8"
R	H	15908	Spacer Group (includes Items I, J and K)
R	I	1924AA	Spacer-Short
R	J	1925AA	Spacer-Medium
R	K	1926AA	Spacer-Long
R	L	34410	Kwik Stepper® Step Bit 1/2"
R	M	767	Hydraulic Hand Pump
R	N	06302	High Pressure Hose–1/4" x 3'
R	R	30206	Plastic Case

Ram and Hand Pump Kits Parts List

CAT NO.	UPC NO.	DESCRIPTION	HOLE SIZE				KIT CAT./UPC NO.				
			CONDUIT & PIPE SIZE	ACTUAL		7646/15906	7306/15909	7310/15910	7646PG/27433	38456	
				Ø IN	Ø MM						
721-1/2	31756	1/2" Conduit Size Slug-Buster® Punch	1/2"	7/8	0.885	22.5		1	1		1
14722	14722	1/2" Conduit Size Die	1/2"	7/8	0.885	22.5				1	
123AV	04008	3/4" Conduit Size Punch	3/4"	—	1.115	28.3		1	1	1	1
124AV	06972	3/4" Conduit Size Die	3/4"	—	1.115	28.3		1	1		1
125AV	04010	1" Conduit Size Punch	1"	—	1.362	34.6		1	1		1
126AV	04011	1" Conduit Size Die	1"	—	1.362	34.6		1	1		1
127AV	06974	1-1/4" Conduit Size Slug-Buster® Punch	1-1/4"	1-11/16	1.701	43.2		1	1		1
128AV	04013	1-1/4" Conduit Size Die	1-1/4"	1-11/16	1.701	43.2		1	1		1
439AV	06978	1-1/2" Conduit Size Punch	1-1/2"	1-15/16	1.951	49.6		1	1		1
440AV	04061	1-1/2" Conduit Size Die	1-1/2"	1-15/16	1.951	49.6		1	1		1
441AV	04062	2" Conduit Size Punch	2"	2-3/8	2.416	61.5		1	1		1
442AV	04063	2" Conduit Size Die	2"	2-3/8	2.416	61.5		1	1		1
1429AV	04175	2-1/2" Conduit Size Punch	2-1/2"	2-7/8	2.914	74.0			1		1
1430AV	04177	2-1/2" Conduit Size Die	2-1/2"	2-7/8	2.914	74.0			1		1
1431AV	04180	3" Conduit Size Punch	3"	3-1/2	3.539	89.9			1		1
1432AV	04183	3" Conduit Size Die	3"	3-1/2	3.539	89.9			1		1
2982AV	04653	3-1/2" Conduit Size Punch	3-1/2"	4	4.044	102.7			1		
2981AV	04652	3-1/2" Conduit Size Die	3-1/2"	4	4.044	102.7			1		
2984AV	04655	4" Conduit Size Punch	4"	4-1/2	4.544	115.4			1		1
2983AV	04654	4" Conduit Size Die	4"	4-1/2	4.544	115.4			1		1
21316	21316	Pg-9 Slug Buster® Punch	—	—	0.598	15.2					1
32002	32002	Pg-9 Die	—	—	0.598	15.2					1
17700	17700	Pg-11 Slug Buster® Punch	—	—	0.732	18.6					1
32003	32003	Pg-11 Die	—	—	0.732	18.6					1
17697	17697	Pg-13 Slug Buster® Punch	—	—	0.803	20.4					1
32004	32004	Pg-13 Die	—	—	0.803	20.4					1
36882	36882	Pg-21 Slug Buster® Punch	3/4"	—	1.115	28.3					1
32006	32006	Pg-21 Die	3/4"	—	1.115	28.3					1
36282	36282	30.5 mm Punch	—	1-7/32	1.210	30.5					1
36279	36279	30.5 mm Die	—	1-7/32	1.210	30.5					1
18331	18331	Pg-29 Slug Buster® Punch	—	—	1.457	37.0					1
32008	32008	Pg-29 Die	—	—	1.457	37.0					1
17687	17687	Pg-36 Slug Buster® Punch	—	—	1.850	47.0					1
32009	32009	Pg-36 Die	—	—	1.850	47.0					1
17690	17690	Pg-48 Slug Buster® Punch	—	—	2.362	60.0					1
32011	32011	Pg-48 Die	—	—	2.362	60.0					1
746	17091	Ram (includes following item)					1	1	1	1	1
2113B	10109	Draw Stud—3/4" x 5 3/8"					1	1	1	1	1
1557AA	03170	Punch Sleeve					1	1	1	1	1
20963	20963	Draw stud—3/8" x 4.8"					1	1	1	1	1
15908	15908	Spacer Group (includes 1 ea. of following 3 items)					1	1	1	1	1
1924AA	03248	Spacer-Short					1	1	1	1	1
1925AA	03249	Spacer-Medium					1	1	1	1	1
1926AA	06904	Spacer-Long					1	1	1	1	1
34410	34410	Kwik Stepper® Step Bit 1/2"					1	1	1	1	1
767	13284	Hydraulic Hand Pump					1	1	1	1	1
06302	06302	High Pressure Hose — 1/4" x 3'					1	1	1	1	
30206	30206	Plastic Case					1	1		1	
18402	18402	Steel case							1		1

PUNCHES AND DIES

DRAW STUDS AND MISC.

STANDARD KNOCKOUT PUNCH KITS

Standard Round Manual Knockout Punch Kits

- Assortment of commonly used round standard knockout punches, packaged to meet the contractor's needs.
- High-impact, rugged plastic carrying case.



737BB

Wrenches Sold Separately
for kits 737BB, 735BB and 7304BB



735BB



7304 For 11 Ton
Hydraulic Drivers

CAT NO.	UPC NO.	DESCRIPTION	CAPACITY		WEIGHT	
			MILD STEEL	GA	MM	LBS.
735BB	19973	1/2" - 1-1/4" Conduit Size Knockout Punch Kit (Manual Round Standard)	10	3.5	2.5	1.1
737BB	19974	1-1/2" - 2" Conduit Size Knockout Punch Kit (Manual Round Standard)	10	3.5	4.4	2.0
7304	02815	Standard Punches and Dies (no draw studs) for 2-1/2" through 4" Conduit, in Plastic Case	10	3.5	21	9.5

735BB/19973 KNOCKOUT PUNCH KIT INCLUDES

CAT NO.	UPC NO.	DESCRIPTION	HOLE SIZE		
			ACTUAL		
			Ø INCH	Ø MM.	
721-1/2	31756	1/2" Conduit Size Slug-Buster® Punch	7/8	0.885	22.5
14722	14722	1/2" Conduit Size Die	7/8	0.885	22.5
00042	00042	3/8" x 1-9/16" Draw Stud			
123AV	04008	3/4" Conduit Size Punch	—	1.115	28.3
124AV	06972	3/4" Conduit Size Die	—	1.115	28.3
125AV	04010	1" Conduit Size Punch	—	1.362	34.6
126AV	04011	1" Conduit Size Die	—	1.362	34.6
127AV	06974	1-1/4" Conduit Size Punch	1-11/16	1.701	43.2
128AV	04013	1-1/4" Conduit Size Die	1-11/16	1.701	43.2
249AVBB	04040	3/4" x 2-1/8" Draw Stud			
31880	31880	Plastic Case			

737BB/19974 KNOCKOUT PUNCH KIT INCLUDES

CAT NO.	UPC NO.	DESCRIPTION	HOLE SIZE		
			ACTUAL		
			Ø INCH	Ø MM.	
439AV	06978	1-1/2" Conduit Size Punch	1-15/16	1.951	49.6
440AV	04061	1-1/2" Conduit Size Die	1-15/16	1.951	49.6
441AV	04062	2" Conduit Size Punch	2-3/8	2.416	61.5
442AV	04063	2" Conduit Size Die	2-3/8	2.416	61.5
304AVBB	04042	3/4" x 2-15/16" Draw Stud			
32012	32012	Plastic Case			

7304/02815 KNOCKOUT PUNCH KIT INCLUDES

CAT NO.	UPC NO.	DESCRIPTION	HOLE SIZE		
			ACTUAL		
			Ø INCH	Ø MM.	
1429AV	04175	2-1/2" Conduit Size Punch	2-7/8	2.914	74.0
1430AV	04177	2-1/2" Conduit Size Die	2-7/8	2.914	74.0
1431AV	04180	3" Conduit Size Punch	3-1/2	3.539	89.9
1432AV	04183	3" Conduit Size Die	3-1/2	3.539	89.9
2982AV	04978	3-1/2" Conduit Size Punch	4	4.044	102.7
2981AV	04652	3-1/2" Conduit Size Die	4	4.044	102.7
2984AV	04655	4" Conduit Size Punch	4-1/2	4.544	115.4
2983AV	04654	4" Conduit Size Die	4-1/2	4.544	115.4
30236	30236	Plastic Case			

NOTE: See Standard Round Knockout Punches on pages 86 and 87 for listing of individual punch units, punches, dies and draw studs.

Standard Round Manual Industrial Punch Kit



Wrench Sold Separately

- Includes most popular sizes for industrial applications.
- Time-saving tool for maintenance, repair and operation applications.
- Convenient steel carrying case.
- Ball bearing drive screw for easy manual operation or use with ratchet and hydraulic drivers.

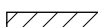
SPECIFICATIONS

Capacity	1-1/4" Punch - 16 gauge (1.5 mm) mild steel. 3/4", 1", and 1-1/8" Punches - 14 gauge (2.0 mm) mild steel. 7/8" and 1-1/2" Punches 10 gauge (3.5 mm) mild steel.
Operation	Manual - Wrench not included.

CAT NO.	UPC NO.	DESCRIPTION
39860	39860	3/4" - 1-1/2" Hole Size Manual Industrial Punch Kit

39860 MANUAL INDUSTRIAL KNOCKOUT PUNCH KIT INCLUDES

CAT NO.	UPC NO.	DESCRIPTION	HOLE SIZE		
			ACTUAL		
			Ø INCH		Ø MM
113AV	03998	3/4" Punch	3/4	0.750	19.1
114AV	03999	3/4" Die	3/4	0.750	19.1
121AV	04006	7/8" Punch	7/8	0.885	22.5
14722	14722	7/8" Die	7/8	0.885	22.5
87AV	03986	1" Punch	1	1.000	25.4
35164	35164	1" Die	1	1.000	25.4
91AV	03990	1-1/8" Punch	1-1/8	1.125	28.6
92AV	03991	1-1/8" Die	1-1/8	1.125	28.6
117AV	04002	1-1/4" Punch	1-1/4	1.250	31.8
118AV	04003	1-1/4" Die	1-1/4	1.250	31.8
3207AV	04736	1-1/2" Punch	1-1/2	1.500	38.1
3208AV	07044	1-1/2" Die	1-1/2	1.500	38.1
00042	00042	3/8" BB Draw Stud			
249AVBB	04040	3/4" BB Draw Stud			
19193	19193	Steel Storage Box			

 10 GA. MILD STEEL

Standard Round Manual Knockout Punch Kits - Metric



- 1" (25.4 mm) Hex ratchet wrench allows use with both 3/8" (9.5 mm) and 3/4" (19.1 mm) draw studs.
- 12.7 mm Kwik Stepper® step bit included.
- Plastic carrying case included.

SPECIFICATIONS

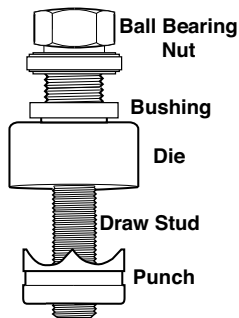
Operation Manual - Ratchet wrench included

CAT NO.	UPC NO.	DESCRIPTION	WEIGHT	
			LBS.	KG.
36687	36687	Pg-9 through Pg-48 Manual Round Standard Knockout Punch Kit	8.8	4
36688	36688	ISO-16 through ISO-40 Manual Round Standard Knockout Punch Kit	5.2	2.3
7309E	32804	Pg-9 through Pg-48 Standard Knockout Pg. Punch Kit. Replacement Kit Packaged in Carton Without Plastic Case.	8.8	4

CAT NO.	UPC NO.	DESCRIPTION	HOLE SIZE				KIT CAT./UPC NO.			
			ACTUAL		CAPACITY MILD STEEL		36687	36688	7309E/ 32804	
			Ø INCH	Ø MM	GA	MM				
21316	21316	Pg-9 Punch	—	0.885	22.5	14	2.0			✓
31969	31969	Pg-9 Slug-Buster® Punch	—	0.885	22.5	14	2.0	✓		
32002	32002	Pg-9 Die	—	1.115	28.3	14	2.0	✓		✓
17700	17700	Pg-11 Punch	—	1.115	28.3	14	2.0	✓		✓
32003	32003	Pg-11 Die	—	1.362	34.6	14	2.0	✓		✓
17697	17697	Pg-13 Punch	—	1.362	34.6	14	2.0	✓	✓	✓
32004	32004	Pg-13 Die	—	1.701	43.2	14	2.0	✓	✓	✓
121AV	04006	Pg-16 Punch	7/8	1.701	43.2	10	3.5	✓		✓
14722	14722	Pg-16 Die	7/8	1.951	49.6	10	3.5	✓		✓
36882	36882	Pg-21 Punch	—	1.951	49.6	10	3.5	✓		✓
32006	32006	Pg-21 Die	—	2.416	61.5	10	3.5	✓		✓
36282	36282	30.5 mm Punch	1-7/32	2.416	61.5	16	1.5	✓		✓
36279	36279	30.5 mm Die	1-7/32			16	1.5	✓		✓
18331	18331	Pg-29 Punch	—			10	3.5	✓		✓
32008	32008	Pg-29 Die	—			10	3.5	✓		✓
17687	17687	Pg-36 Punch	—			10	3.5	✓		✓
32009	32009	Pg-36 Die	—			10	3.5	✓		✓
17690	17690	Pg-48 Punch	—			10	3.5	✓		✓
32011	32011	Pg-48 Die	—			10	3.5	✓		✓
35193	35193	ISO-16 Punch	—			14	2.0		✓	
35162	35162	ISO-16 Die	—			14	2.0		✓	
87AV	03986	ISO-25 Punch	—			14	2.0		✓	
35164	35164	ISO-25 Die	—			14	2.0		✓	
24459	24459	ISO-32 Punch	—			10	3.5		✓	
35168	35168	ISO-32 Die	—			10	3.5		✓	
24462	24462	ISO-40 Punch	—			10	3.5		✓	
35159	35159	ISO-40 Die	—			10	3.5		✓	
1756AV	04232	ISO-50 Punch	—			10	3.5			
35161	35161	ISO-50 Die	—			10	3.5			
1758AV	04234	ISO-63 Punch	—			10	3.5			
1757AV	04233	ISO-63 Die	—			10	3.5			
249AVBB	04040	Draw Stud - 3/4" x 2-1/8"							✓	
304AVBB	04042	Draw Stud - 3/4" x 2-15/16"						✓		
34941	34941	Ratchet Wrench -1" Hex						✓	✓	
34410	34410	Kwik Stepper Step Bit 1-2" (12.7 mm)						✓	✓	
00042	00042	Ball Bearing Draw Stud with 1" Hex Head, 3/8" x 1-5/8"						✓	✓	
36685	36685	Plastic Case						✓	✓	

STANDARD KNOCKOUT PUNCHES

Standard Round Knockout Punches 0.5" to 6" Conduit and Pipe

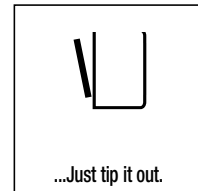
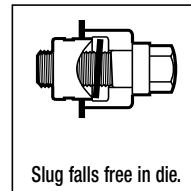
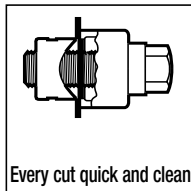


- Round standard metal punch units are complete units consisting of punch, die and draw stud.
- Use with battery-powered, hydraulic, ratchet or manual drivers.
- Properly assembled through pilot holes, they will make clean, fast and accurate holes.

SPECIFICATIONS

Capacity Mild steel up through 10 gauge (3.5 mm).
Application Punch mild steel, aluminum, fiberglass and plastic.
Hole Sizes Conduit Sizes - Hole size is outside diameter of US conduit sizes. Example: 1/2" conduit size punch actually makes a 7/8" hole.
 Pg Sizes - European standard pipe sizes.
 ISO Sizes - International Standards Organization pipe sizes.
Operation Operate with battery-powered, hydraulic, ratchet or manual drivers. When used with battery-powered, hydraulic, or ratchet drivers buy the punch and die only; the draw stud is part of the driver kit.

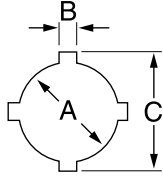
CAT NO.	UPC NO.	DESCRIPTION
3037AV	04686	Bushing for 3-1/2" (conduit hole size) and larger punches with manual operation



SPECIAL APPLICATION PUNCHES

Oiltight Punches with Notches

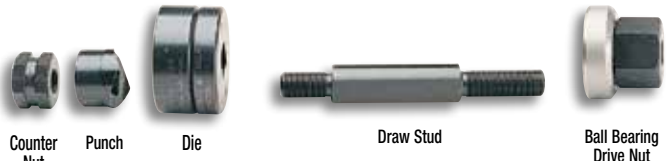
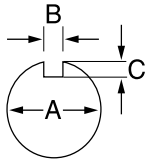
Other oiltight sizes without notches available in standard, Slug-Buster® and Slug-Splitter® designs.



HOLE SIZE						MAXIMUM CAPACITY MILD STEEL		OPERATION TYPE	CAT./UPC NO					MINIMUM PILOT HOLE		WEIGHT LBS. KG.	OPTIONAL ADAPTER FOR HYDRAULIC DRIVERS	
INCH			MM			GA	MM		PUNCH UNIT (INCLUDES PUNCH, DIE, DRAW STUD AND NUTS)		BB DRIVE NUT	COUNTER NUT	INCH	MM				
A	B	C	A	B	C				PUNCH	DIE	DRAW STUD	DRIVE NUT	COUNTER NUT					
.875	.125	1.000	22.5	3.2	25.4	14	2.0	Hand/Hydr.	60238	60239	60250	60117	60165	60258	.625	15.9	2.1 .95	601670
1.210	.190	1.380	30.5	4.8	36.0	10	3.5	Hand/Hydr.	60242	60243	60249	60117	60165	60258	.625	15.9	2.7 1.2	601670

For maximum draw stud life, Greenlee recommends the use of battery or hydraulic drivers.

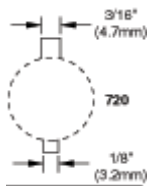
Key Punches



HOLE SIZE						MAXIMUM CAPACITY MILD STEEL		OPERATION TYPE	CAT./UPC NO					MINIMUM PILOT HOLE		WEIGHT LBS. KG.	OPTIONAL ADAPTER FOR HYDRAULIC DRIVERS	
INCH			MM			GA	MM		PUNCH UNIT (INCLUDES PUNCH, DIE, DRAW STUD AND NUTS)		BB DRIVE NUT	COUNTER NUT	INCH	MM				
A	B	C	A	B	C				PUNCH	DIE	DRAW STUD	DRIVE NUT	COUNTER NUT					
0.481	0.055	.030	12.2	1.4	.8	16	1.5	Hand/Hydr.	60101	60102	60103	60115	60120	05244	.375	9.5	.88 .4	601140
1.171	0.123	.097	29.7	3.1	2.5	14	2.0	Hand/Hydr.	60104	60105	60106	60166	60165	60258	.875	23.8	2.3 1.0	601670
1.265	0.156	.097	32.1	4.0	2.5	14	2.0	Hand/Hydr.	60107	60108	60109	60166	60165	60258	.875	23.8	2.4 1.1	601670
1.328	0.102	.097	33.7	2.6	2.5	14	2.0	Hand/Hydr.	60110	60111	60112	60166	60165	60258	.875	23.8	2.4 1.1	601670

For use with any Greenlee Hydraulic Driver or Battery-Powered Driver. For maximum draw stud life, Greenlee recommends the use of battery or hydraulic drivers

720 Keyway Punch



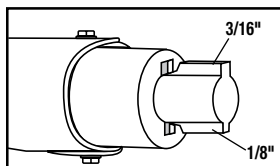
NOTE: Not for Stainless Steel

- Eliminates time-consuming hand sawing and filing when making keyways for push-button switches.
- Use as a nibbler to make wider or deeper keyways.
- Punches 1/8" (3.2 mm) or 3/16" (4.8 mm) keyways for 7/8" (22.5 mm) or 1-7/32" (30.5 mm) push-button holes.
- Canadian Patent No. 1,172,435.

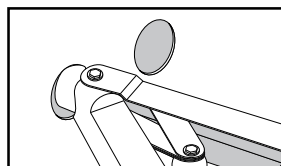
SPECIFICATIONS

Operation Manual
Capacity 10 gauge (3.5 mm) mild steel

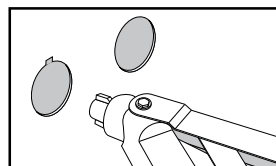
CAT NO.	UPC NO.	DESCRIPTION	WEIGHT	
			LBS.	KG.
720	26534	Keyway Punch	2.8	1.27
26534	26536	Punch		
26538	26538	Die		



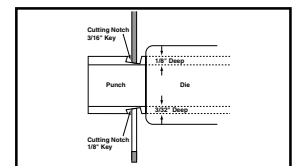
1. Locate proper cutting notch on the cutting head.



2. Place cutting notch inside edge of hole and cut keyway.

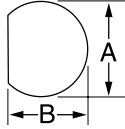


3. Withdraw the punch.



4. Use as a nibbler to make wider or deeper keyways.

"D" Punches

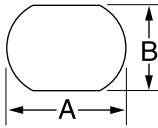


HOLE SIZE				MAXIMUM CAPACITY MILD STEEL		OPERATION TYPE	CAT./UPC NO					MINIMUM PILOT HOLE		WEIGHT		OPTIONAL ADAPTER FOR HYDRAULIC DRIVERS	
INCH		MM		GA	MM		PUNCH UNIT (INCLUDES PUNCH, DIE, DRAW STUD AND NUTS)		PUNCH	DIE	DRAW STUD	BB DRIVE NUT	COUNTER NUT	INCH	MM		LBS.
A	B	A	B														
0.500	0.469	12.7	11.9	16	2.0	Hand/Hydr.	60077	60078	60079	60115	60120	05244	.375	9.5	.9	.41	60114
0.625	0.594	15.9	15.1	14	2.0	Hand/Hydr.	61080**			34421	34733	04638	.500	12.7	1.1	.50	33967
0.750	0.703	19.1	19.1	14	2.0	Hand/Hydr.	61083**			34421	34733	04638	.500	12.7	1.2	.50	33967

◊ For use with any Greenlee Hydraulic Driver or Battery-Powered Driver

For maximum draw stud life, Greenlee recommends the use of battery or hydraulic drivers
** Sold as Unit only

Double "D" Punches

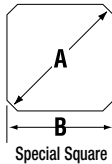
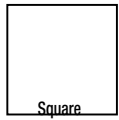


HOLE SIZE				MAXIMUM CAPACITY MILD STEEL		OPERATION TYPE	CAT./UPC NO					MINIMUM PILOT HOLE		WEIGHT		OPTIONAL ADAPTER FOR HYDRAULIC DRIVERS	
INCH		MM		GA	MM		PUNCH UNIT (INCLUDES PUNCH, DIE, DRAW STUD AND NUTS)		DRAW STUD	BB DRIVE NUT	COUNTER NUT	INCH	MM	LBS.	KG.		
A	B	A	B														
0.769	0.642	19.5	16.3	14	2.0	Hand/Hydr.	61086**			34421	34733	04638	.500	12.7	1.1	.50	33967
0.795	0.697	20.2	17.6	14	2.0	Hand/Hydr.	61089**			34421	34733	04638	.500	12.7	1.1	.50	33967
0.913	0.756	23.2	19.2	14	2.0	Hand/Hydr.	61092**			34421	34733	04638	.500	12.7	1.2	.54	33967
0.913	0.795	23.2	20.2	14	2.0	Hand/Hydr.	61095**			34421	34733	04638	.500	12.7	2	.9	33967
1.375	1.125	34.9	28.6	14	2.0	Hand/Hydr.	60098**			60166	60165	60258	.875	23.8	2.5	1.1	60167

◊ For use with any Greenlee Hydraulic Driver or Battery-Powered Driver

For maximum draw stud life, Greenlee recommends the use of battery or hydraulic drivers
** Sold as Unit only

Square and Special Square Punches



HOLE SIZE			MAXIMUM CAPACITY MILD STEEL		OPERATION TYPE	CAT./UPC NO					MINIMUM PILOT HOLE		WEIGHT		OPTIONAL ADAPTER FOR HYDRAULIC DRIVERS	
INCH		MM	GA	MM		PUNCH UNIT (INCLUDES PUNCH, DIE, DRAW STUD AND NUTS)		PUNCH	DIE	DRAW STUD	BB DRIVE NUT	COUNTER NUT	INCH	MM		LBS.
1/2"	0.500 x 0.500	12.7 x 12.7	16	1.5	◊Hand/Hydr.	60001	60002	60003	60115	60120	05244	.375	9.5	1.1	.50	60114
5/8"	0.625 x 0.625	15.9 x 15.9	14	2.0	◊Hand/Hydr.	61004	60005	60006	34421	34733	04638	.500	12.7	1.5	.68	33967
3/4"	0.750 x 0.750	19.1 x 19.1	14	2.0	◊Hand/Hydr.	61007**			34421	34733	04638	.500	12.7	1.5	.68	33967
7/8"	0.882 x 0.882	22.4 x 22.4	14	2.0	◊Hand/Hydr.	61010**			34421	34733	04638	.500	12.7	1.8	.82	33967
	0.945 x 0.945	24.0 x 24.0	14	2.0	◊Hand/Hydr.	61013**			34421	34733	04638	.500	12.7	2.3	1.0	33967
1"	1.000 x 1.000	25.4 x 25.4	14	2.0	◊Hand/Hydr.	60016	60017	60018	60117	60165	60258	.625	15.9	2.4	1.1	60167
	1.772 x 1.772	45.0 x 45.0	10	3.5	◊Hydr. Only	60287	60288	60289	60118	—	60235	1.188	30.2	6.0	2.7	◊
1-13/16"	1.811 x 1.811	46.0 x 46.0	10	3.5	◊Hydr. Only	60019	60020	60019	60118	—	60235	1.188	30.2	6.2	2.8	◊
2"	2.000 x 2.000	50.8 x 50.8	10	3.5	◊Hydr. Only	60168	60169	60170	60118	—	60235	1.188	30.2	6.9	3.1	◊
2-11/16"	2.677 x 2.677	68.0 x 68.0	10	3.5	◊Hydr. Only	60171	60172	60173	60118	—	60235	1.188	30.2	10.1	4.6	◊
3-5/8"	3.622 x 3.622	92.0 x 92.0	10	3.5	*Hydr. Only	60174	60175	60176	60118	—	60235	1.188	30.2	14.8	6.7	*
4-1/8"	4.125 x 4.125	104.8 x 104.8	10	3.5	*Hydr. Only	60177	60178	60179	60118	—	60235	1.188	30.2	18.8	8.5	*
	5.433 x 5.433	138.0 x 138.0	14	2.0	*Hydr. Only	60234	60023	60024	60118	—	60235	1.188	30.2	20	9.1	*

SPECIAL SQUARE

0.886(A)	0.791(B)	22.5	◊(A)	20.1(B)	14	2.0	Hand/Hydr.	61125**			34421	34733	04638	.500	12.7	.7	.3	33967
----------	----------	------	------	---------	----	-----	------------	---------	--	--	-------	-------	-------	------	------	----	----	-------

*For use with Hand and Foot Pump Hydraulic Drivers with Ram ◊ For use with any Greenlee Hydraulic Driver or Battery-Powered Driver
** Sold as Unit only

For maximum draw stud life, Greenlee recommends the use of battery or hydraulic drivers

Rectangular Punches

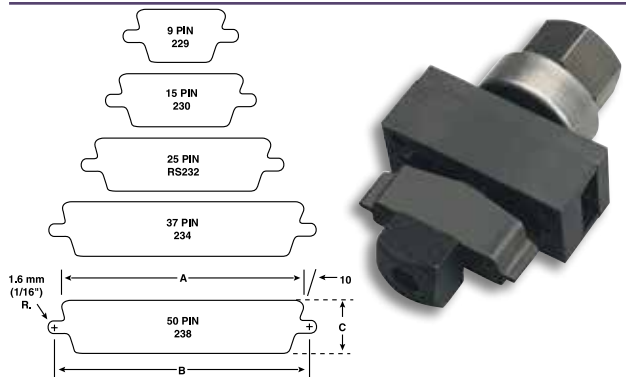


HOLE SIZE		MAXIMUM CAPACITY MILD STEEL		OPERATION TYPE	CAT./UPC NO PUNCH UNIT (INCLUDES PUNCH, DIE, DRAW STUD AND NUTS)	PUNCH	DIE	DRAW STUD	BB DRIVE NUT	COUNTER NUT	MINIMUM PILOT HOLE		WEIGHT		OPTIONAL ADAPTER FOR HYDRAULIC DRIVERS
INCH	MM	GA	MM								INCH	MM	LBS.	KG.	
0.437 x 0.875	11.1 x 22.2	16	1.5	∅Hand/Hydr.	60025	60026	60027	60115	60120	05244	.375	9.5	1.2	.5	60114∅
0.670 x 0.749	17.0 x 19.0	14	2.0	∅Hand/Hydr.	61028	60029	60030	34421	34733	04638	.500	12.7	1.5	.68	33967∅
0.750 x 1.140	19.1 x 29.0	14	2.0	∅Hand/Hydr.	60031	60032	60033	60117	60165	60258	.625	15.9	2.3	1.0	60167∅
0.750 x 1.310	19.1 x 33.3	14	2.0	∅Hand/Hydr.	60034	60035	60036	60117	60165	60258	.625	15.9	2.3	1.0	60167∅
0.861 x 1.018	21.9 x 25.9	14	2.0	∅Hand/Hydr.	60037	60038	60039	60117	60165	60258	.625	15.9	2.3	1.0	60167∅
0.866 x 1.181	22.0 x 30.0	14	2.0	∅Hand/Hydr.	60040	60041	60042	60117	60165	60258	.625	15.9	2.4	1.1	60167∅
0.866 x 1.654	22.0 x 42.0	14	2.0	∅Hand/Hydr.	60043	60045	60046	60117	60165	60258	.625	15.9	2.9	1.3	60167∅
0.990 x 1.140	25.1 x 29.0	14	2.0	∅Hand/Hydr.	60047	60048	60049	60117	60165	60258	.625	15.9	2.6	1.2	60167∅
1.250 x 1.380	31.8 x 35.1	14	2.0	∅Hand/Hydr.	60050	60051	60052	60117	60165	60258	.625	15.9	3.1	1.4	60167∅
1.312 x 2.625	33.3 x 67.9	10	3.5	∅Hand/Hydr.	60053	60054	60055	60118	—	60235	1.188	30.2	5.1	2.3	∅
1.378 x 2.047	35.0 x 52.0	10	3.5	∅Hand/Hydr.	60056	60057	60058	60118	—	60235	1.188	30.2	6.1	2.8	∅
1.378 x 2.559	35.0 x 65.0	10	3.5	∅Hand/Hydr.	60059	60060	60061	60118	—	60235	1.188	30.2	6.8	3.1	∅
1.378 x 3.228	35.0 x 82.0	14	2.0	∅Hand/Hydr.	60062	60063	60064	60118	—	60235	1.188	30.2	7.7	3.5	*
1.378 x 4.409	35.0 x 112.0	14	2.0	∅Hand/Hydr.	60065	60066	60067	60118	—	60235	1.188	30.2	9.2	4.2	*
1.811 x 3.622	46.0 x 92.0	10	3.5	∅Hand/Hydr.	60068	60069	60070	60118	—	60235	1.188	30.2	8.9	4.0	*
2.250 x 3.500	57.2 x 88.9	10	3.5	∅Hand/Hydr.	60071	60072	60073	60118	—	60235	1.188	30.2	10.1	4.6	*
2.677 x 5.433	68.0 x 138.0	14	2.0	∅Hand/Hydr.	60074	60075	60076	60118	—	60235	1.188	30.2	16.1	7.3	*

* For use with Hand and Foot Pump Hydraulic Drivers with Ram
 ∅ For use with any Greenlee Hydraulic Driver or Battery-Powered Driver

For maximum draw stud life, Greenlee recommends the use of battery or hydraulic drivers

Electronic Connector Panel Punches



- Cut-out and mounting slots are punched in one operation.
- Drill only one 7/16" (11.1 mm) pilot hole. (See page 104 for Kwik Stepper® step bits.)
- Fast, accurate panel punching with no sawing or filing required.
- Universal size punches for front or back mount of TRW Cinch and ITT Cannon-type or equivalent connectors in 9, 15, 25, 37 or 50-pin configurations.

SPECIFICATIONS

Capacity	16 gauge (1.5 mm) mild steel; 10 gauge (3.5 mm) aluminum
Operation	Manual with a wrench; Quick Draw® and Quick Draw 90® hydraulic drivers, Battery Driver, Ram and Pump hydraulic drivers aluminum

PUNCH UNIT		NO. OF PINS	DIMENSIONS			DRAW STUD	SQUARE COUNTER NUT	DRIVE NUT	WEIGHT	
CAT. NO.	UPC NO.		A	B	C				LBS.	KG
229	34436	9	.787" (20.0 mm)	.982" (24.9 mm)	.469" (11.9 mm)	34421	04638	34733	1.4	.64
231	34437	15	1.127" (28.6 mm)	1.309" (33.3 mm)	.469" (11.9 mm)	34421	04638	34733	1.5	.68
RS232	34420	25	1.6555" (42.0 mm)	1.853" (47.1 mm)	.469" (11.9 mm)	34421	04638	34733	2.0	.91
234	34429	37	2.296" (58.3 mm)	2.497" (58.3 mm)	.469" (11.9 mm)	34421	04638	34733	2.0	.91
238	34444	50	2.201" (55.9 mm)	2.402" (61.0 mm)	.579" (14.7 mm)	34421	04638	34733	2.0	.91

For maximum draw stud life, Greenlee recommends the use of battery or hydraulic drivers

KNOCKOUT PARTS CABINETS

Knockout Punch Parts Assortment Cabinets



7360SB



7361SB

- Includes balanced stock of replacement parts in sturdy steel cabinets.

CAT NO.	UPC NO.	DESCRIPTION
7360SB	34358	Knockout Punch Parts Assortment 1/2" - 2". Includes Metal Cabinet 14" High, 13" Wide and 14-3/4" Deep, with 4 Drawers.
7361SB	34359	Knockout Punch Parts Assortment 1/2" - 3". Includes Metal Cabinet 19-1/2" High, 27" Wide and 15" Deep with 4 Drawers.

7361SB/34359 PARTS CABINET INCLUDES

CAT NO.	UPC NO.	DESCRIPTION	QTY.
721-1/2	31756	Slug-Buster® 1/2" Conduit Punch	18
14722	14722	1/2" Conduit Die	12
721-3/4	31757	Slug-Buster® 3/4" Conduit Punch	6
124AV	06972	3/4" Conduit Die	6
721-1	31758	Slug-Buster® 1" Conduit Punch	6
126AV	04011	1" Conduit Die	6
721-1-1/4	31759	Slug-Buster® 1-1/4" Conduit Punch	6
128AV	04013	1-1/4" Conduit Die	6
721-1-1/2	31760	Slug-Buster® 1-1/2" Conduit Punch	3
440AV	04061	1-1/2" Conduit Die	3
721-2	31761	Slug-Buster® 2" Conduit Punch	3
442AV	04063	2" Conduit Die	2
1429AV	04175	2-1/2" Conduit Punch	1
1430AV	04177	2-1/2" Conduit Die	1
1431AV	04180	3" Conduit Punch	1
1432AV	04183	3" Conduit Die	1
00042	00042	3/8" Draw Stud	12
249AVBB	04040	3/4" Drive Screw	8
304AVBB	04042	3/4" Drive Screw	6
1434AV	04188	5-1/2" x 3/4" Drive Screw	1
1433AVBB	04187	1" Ball Bearing Nut	1
12097	12097	3/8" Adapter Screw	6
30227	30227	7/16" Adapter Screw	2
12099	12099	3/4" Ball Bearing Adapter Screw	2
20963	20963	3/8" Draw Stud	20
2113B	10109	3/4" Draw Stud	6
1557AA	03170	1-1/8" Punch Sleeve	1
3037AV	04686	3-1/2", 4" & 5" Conduit Bushing	1
1924AA	03248	Short Spacer	4
1925AA	03249	Medium Spacer	4
1926AA	06904	Long Spacer	4
28154	28154	Punch 1/2" HD Slug-Splitter SC™	1
28155	28155	Die 1/2" HD Slug-Splitter SC™	1
29451	29451	Draw Stud, 7/16" Stainless Steel	1
31834	31834	Cabinet A only (top)	1
31849	31849	Cabinet B only (bottom)	1

7360SB/34358 PARTS CABINET INCLUDES

CAT NO.	UPC NO.	DESCRIPTION	QTY.
721-1/2	31756	Slug-Buster® 1/2" Conduit Punch	18
14722	14722	1/2" Conduit Die	12
721-3/4	31757	Slug-Buster® 3/4" Conduit Punch	6
124AV	06972	3/4" Conduit Die	6
721-1	31758	Slug-Buster® 1" Conduit Punch	3
126AV	04011	1" Conduit Die	3
721-1-1/4	31759	Slug-Buster® 1-1/4" Conduit Punch	3
128AV	04013	1-1/4" Conduit Die	3
721-1-1/2	31760	Slug-Buster® 1-1/2" Conduit Punch	2
440AV	04061	1-1/2" Conduit Die	2
721-2	31761	Slug-Buster® 2" Conduit Punch	2
442AV	04063	2" Conduit Die	1
00042	00042	3/8" Drive Screw	12
249AVBB	04040	3/4" Drive Screw	4
304AVBB	04042	3/4" Drive Screw	4
12097	12097	3/8" Adapter Screw	4
20963	20963	3/8" Draw Stud	20
2113B	10109	3/4" Draw Stud	4
31832	31832	Cabinet only	1

DRAW STUDS FOR KNOCKOUTS

Replacement Draw Studs for Manual Drivers

Replacement Draw Stud Selection Guide

Refer to the **ACTUAL SIZE PICTURES** and information below when ordering a replacement draw stud. Sizes given are diameter X length.



3026AV –
1-1/8" (28.6 mm) x 7-1/2" (190 mm)

1675AV Draw Stud – 1/4" (6.4 mm) x 1-3/8" (35 mm)

00042 – 3/8" (9.5 mm) x 1-5/8" (41 mm)

249AVBB – 3/4" (19.0 mm) x 2-1/8" (54 mm)

304AVBB – 3/4" (19.0 mm) x 2-15/16" (75 mm)

1434AV
3/4" (19.0 mm) x
5-1/2" (140 mm)

Replacement Draw Studs for Hydraulic Drivers

Replacement Draw Stud Selection Guide

Refer to the **ACTUAL SIZE PICTURES** and information below when ordering a replacement draw stud. Sizes given are diameter X length.



1557AA- 1-1/8" (28.6 mm) x 3" (76 mm)



60114 (Adapter) - 3/4" (19 mm) x 1/4" (6.35 mm) internal



33967 (Adapter) - 3/4" (19 mm) x 3/8" (9.5 mm) internal



60167 (Adapter) - 3/4" (19 mm) x 1/2" (12.7 mm) internal



1614SS- 3/8" (9.5 mm) x 2-13/16" (71 mm)



2113B - 3/4" (19.0 mm) x 5.38" (137 mm)



20963 - 3/8" (9.5 mm) to 3/4" (19.0 mm) x 4.8" (122 mm)



7212SP11 - 3/4" (19 mm) x 4.77" (121 mm)



7212SP12* - 3/4" (19 mm) x 5.63" (143 mm)

NEW PRODUCT

NEW PRODUCT

*For use with 746 Hydraulic RAM

Replacement Draw Studs for Hydraulic Drivers (continued)



31872 – 3/4" (19 mm) x 4-1/2" (114.3 mm)



29451 – 7/16" (11.1 mm) x 4-1/4" (108 mm)



29452 – 3/4" (19.0 mm) x 5-1/2" (140 mm)

Replacement Draw Studs for Ratchet Drivers

Replacement Draw Stud Selection Guide

Refer to the **ACTUAL SIZE PICTURES** and information below when ordering a replacement draw stud. Sizes given are diameter X length.



12099 – 3/4" (19.0 mm) x 4-3/4" (121 mm)



30227 – 7/16" (11.1 mm) x 3-5/8" (92 mm)



12097 – 3/8" (9.5 mm) x 3-1/2" (89 mm)

Replacement Draw Studs for Special Shape Punches

Replacement Draw Stud Selection Guide

Refer to the **ACTUAL SIZE PICTURES** and information below when ordering a replacement draw stud. Sizes given are diameter X length.

For maximum draw stud life, Greenlee recommends the use of battery or hydraulic drivers.



60118 – 3/4" (19 mm)
x 6-3/4" (171.5 mm)



60166 – 1/2" (12.7 mm) x 4-5/8" (117.5 mm)



60117 – 1/2" (12.7 mm) x 4-5/8" (117.5 mm)



34421 – 3/8" (9.5 mm) x 3-1/2" (88.9 mm)



60115 – 1/4" (6.3 mm) x 3-7/16" (87.3 mm)



60116 – 1/2" (12.7 mm) x 4-5/8" (117.5 mm)

STUD PUNCHES

ESP710L Stud Punch

**NEW
PRODUCT**



- This tool punches 1-11/32" (34.1 mm) diameter holes in 16 and 18 gauge structural studs.
- Has the ability to punch holes in under 5 seconds
- The ESP710L can take both time and hard work out of the stud punching process.
- 4" Throat Depth from center of punch.

CAT. NO.	UPC NO.	DESCRIPTION
ESP710L11	52165	Punch, Stud Bat 120V Charger

BATTERY-POWERED STUD PUNCH

CAT. NO.	UPC NO.	ACTUAL HOLE SIZE		WEIGHT		LENGTH		HEIGHT		CAPACITY		BATTERY	CHARGER
		IN.	MM	LBS.	KG	IN.	MM	IN.	MM	GA	MM		
ESP710L11	52165	1-11/32	34.1	9.2	4.2	15	381	11-3/4	298	16	1.5	3.0Ah 18V, Li-Ion	120 Volt

Plumber Stud Punch



- Punches 2-5/8" (66.7 mm) diameter hole in metal studs for professional-looking installation of 2" water, vent, waste pipes.
- Two-speed lever action for fast, easy punching of 24 to 20 gauge thick metal studs.
- 2-1/8" (54 mm) throat width fits over most studs and channels.
- High strength alloy aluminum c-frame and handle provides lightweight tool for easy handling—10.6 lb. (4.8 kg).
- Lever action punch retraction strips punch out of metal stud fast and easy. Patent #6,647,630

SPECIFICATIONS

Actual Hole Size	2-5/8" (66.7 mm)
Weight	10.6 lbs. (4.8 kg)
Length	23-1/2" (596 mm)
Height	9-3/4" (247 mm)
Capacity	24-20 GA (0.9 mm)

CAT. NO.	UPC NO.	DESCRIPTION
713	06430	Plumber Stud Punch
08377	08377	Punch for 713
08379	08379	Die for 713
08375	08375	Link
55316	55316	Pin, Groove .31 x 1.75

Metal Stud Punches



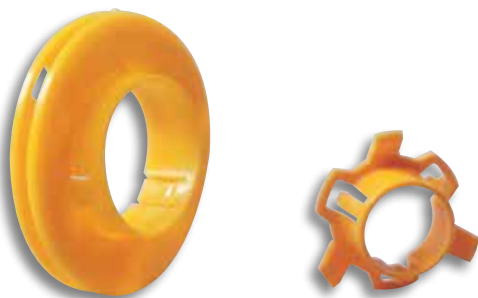
SPECIFICATIONS

Capacity 709 - 1-5/8" (41.3 mm) and wider studs.
20 gauge (0.9 mm) steel studs.
710 - 2-1/2" (63.4 mm) and wider studs.
20 gauge (0.9 mm) steel studs.

- Punch up through 20 gauge (0.9 mm) steel studs in one stroke.
- Aluminum head provides strength with minimum weight, reducing operator fatigue.
- Contoured handle design gives better operator leverage and makes it possible to punch in tight places.
- Self-stripping design eliminates punch hang-ups.
- Automatically centers holes on standard studs.
- Conversion kit available to upgrade early models from 24 gauge to 20 gauge maximum capacity.

CAT NO.	UPC NO.	DESCRIPTION	WEIGHT	
			LBS.	KG.
709	22280	7/8" (22.2 mm) Diameter Stud Punch	7	3.2
710	21285	1-11/32" (34.1 mm) Diameter Stud Punch	7.5	3.5
30968	30968	Conversion Kit – Upgrades Early Model 709 or 710 from 24 to 20 Gauge Maximum Capacity		
R 121AV	04006	Punch for 709		
R 22286	22286	Die for 709		
R 24823	24823	Punch for 710		
R 21297	21297	Die for 710		
06015	06015	Pin Kit		
36617	36617	Link		
05932	05932	Link and Pin Kit (709/710)		
21557	21557	Compression Spring		

Bushings for Metal Stud Punches



- Triple lock design holds bushing securely.
- Locks securely into metal studs from 24 gauge to 12 gauge (0.6 mm to 2.5 mm).
- Helps protect wire insulation from sharp edges of metal studs.
- Makes pulling smooth and easy by preventing hang-ups of cable on raw metal edges.

CAT NO.	UPC NO.	DESCRIPTION	WEIGHT	
			LBS.	KG.
711C	22288	100 Bushings for Hole Punched by 709 for 7/8" (22.2 mm) Diameter Hole	.5	.23
711M	22289	1,000 Bushings for Hole Punched by 709 for 7/8" (22.2 mm) Diameter Hole	3.7	1.7
712A100	05927	100 Bushings for Pre-Punched Hole or 1-11/32" (34.1 mm) Diameter Hole Punched by 710	1.4	.64
712A1000	05928	1,000 Bushings for Pre-Punched Hole or 1-11/32" (34.1 mm) Diameter Hole Punched by 710	15.5	7.0

Manual Stud Punch



SPECIFICATIONS

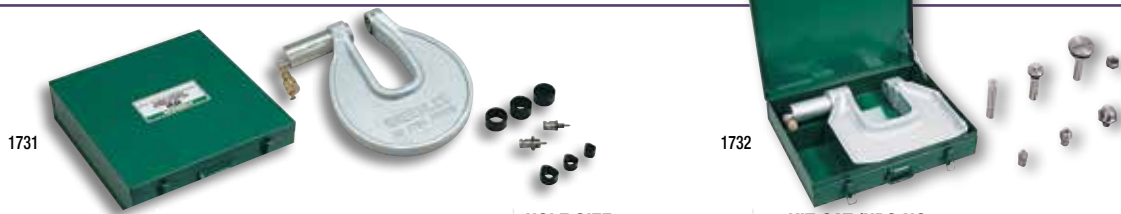
Actual Hole Size 1-1/4" (31.7 mm)
Weight 4.0 lbs. (1.8 kg)
Length 16-3/4" (426 mm)
Height 4-1/2" (247 mm)
Capacity 24-20 GA (0.9 mm)

- Punch up through 20 gauge (0.9 mm) steel studs in one stroke.
- Unique patented punch rolls the edge over for smooth installation of armored cable; cable won't hang up.
- Contoured handle design gives better operator leverage and makes it possible to punch in tight places.
- Automatically centers holes on standard studs.

CAT NO.	UPC NO.	DESCRIPTION
724	10415	Manual Stud Punch
R 10419	10419	Punch for 724

C-FRAME PUNCHES

1731 & 1732 Portable C-Frame Punch Drivers



CAT. NO.	UPC NO.	DESCRIPTION	HOLE SIZE			KIT CAT./UPC NO.			
			IN	MM	PG	1731/ 15911	1731H767/ 20486	1731F1725/ 25169	1732/ 27361
		C-Frame with Ram				✓	✓	✓	✓
13266	13266	Punch Adapter - 3/8" Ø x 1/2" (9.5 mm)							✓
13267	13267	Punch Adapter - 3/4" Ø x 1" (19.0 mm)							✓
13276	13276	Punch Adapter - 3/8" Ø x 1/2" (9.5 mm)				✓	✓	✓	
13277	13277	Punch Adapter - 3/4" Ø x 1" (19.0 mm)				✓	✓	✓	
13268	13268	Punch Adapter - 1-1/8" Ø (28.6 mm)							✓
121AV	04006	1/2" Conduit Size Punch	1/2	16	22.5	✓	✓	✓	
123AV	04008	3/4" Conduit Size Die	3/4	21	28.3	✓	✓	✓	
125AV	04010	1" Conduit Size Punch	1	—	34.6	✓	✓	✓	
12087	12087	C-Frame 1/2" Conduit Size Die	1/2	16	22.5	✓	✓	✓	
12086	12086	C-Frame 3/4" Conduit Size Die	3/4	21	28.3	✓	✓	✓	
12085	12085	C-Frame 1" Conduit Size Die	1	—	34.6	✓	✓	✓	
1725	1725	1725 Hydraulic Foot Pump						✓	
16634	16634	Steel Case				✓	✓	✓	
38316	38316	High Pressure Hose Unit - 1/4" x 3' (includes 1 each of the following 3 items)							
54169	54169	1/4" Male Coupler							
54170	54170	Dust Cap							
06302	06302	High Pressure Hose 1/4" x 3'							
11797	11797	Die Adapter - 3/8" Ø (9.5 mm)							✓
11790	11790	Die Adapter - 3/4" Ø (19.0 mm)							✓
11789	11789	Die Adapter - 1-1/8" Ø (28.6 mm)							✓
767	767	Hydraulic Hand Pump					✓		
755	755	Hydraulic Hand Pump							
37729	37729	Hydraulic Hose - 1/4" x 10' (3 m)						✓	
11289	11289	Hydraulic Hose - 3/8" x 6' (9.5 mm x 1.8)							
27335	27335	Metal Case							✓
50642	50642	Nut - 3/4" - 10 (19.0 mm)							✓
12079	12079	Frame							
15631	15631	Ram							
37614	37614	Quick Disconnect							
11903	11903	C-Frame							
13814	13814	Packing Kit							

- Fast, one-shot punching, no predrilling of pilot holes.
 - Throat measures 8" (203 mm) deep.
- 1731**
- Great for punching junction boxes and small enclosures.
 - Punch can be used with ram inside or outside of the junction box.
 - For use with 1/2" – 1" (22.5 mm – 34.6 mm) conduit size and accessory sizes only.
- 1732**
- Use with 1/2" through 4" conduit size and other round sizes only.
 - Use with Greenlee standard round punches and dies (optional).

SPECIFICATIONS

Capacity 1731: Up through 10 gauge (3.0 mm) mild steel with Greenlee special C-Frame dies and standard punches; 1/2" through 1" conduit and 15.2 mm through 30.5 mm
 1732: Up through 10 gauge (3.0 mm) mild steel with Greenlee Standard punches and dies; 1/2" through 4" conduit and 15.2 mm through 115.4 mm.

CAT NO.	UPC NO.	DESCRIPTION	WEIGHT	
			LBS.	KG.
1731	15911	Driver with Ram, 1/2" Through 1" Conduit (22.5 mm through 34.6 mm) Punches and Dies	32	15
1732	27361	Driver with Ram, 3/8", 3/4" and 1-1/8" Punch and Die Adapters	59	27
1731H767	20486	Same as 1731 with 767 Hydraulic Hand Pump	36	17
1731F1725	25169	Same as 1731 with 1725 Hydraulic Foot Pump	43	20
21316	21316	Pg-9 (15.2 mm) Punch (optional)		
18557	18557	Pg-9 (15.2 mm) Die (optional)		
17700	17700	Pg-11 (18.6 mm) Punch (optional)		
18558	18558	Pg-11 (18.6 mm) Die (optional)		
17697	17697	Pg-13 (20.4 mm) Punch (optional)		
18559	18559	Pg-13 (20.4 mm) Die (optional)		
36282	36282	1-7/32" (30.5 mm) Oil Tight Punch (optional)		
37103	37103	1-7/32" (30.5 mm) Oil Tight Die (optional)		

MANUAL HYDRAULIC PUMPS

Hydraulic Hand Pump



- Lightweight and portable, for use with Greenlee Punch Drivers.
- Versatile, operates in any position.
- Single speed.
- Rugged steel pump body/reservoir with cast aluminum handle.
- Has mounting holes for easy, permanent mounting.

SPECIFICATIONS

Operation	Manual – Hand
Capacity	6,500 psi (448 bar), .0823 in. (13 mm) per stroke
Length	13" (330 mm)
Width	4" (102 mm)
Height	4" (102 mm)

CAT. NO.	UPC NO.	DESCRIPTION	WEIGHT	
			LBS.	kg
767	13284	Hydraulic Hand Pump	6	2.7
R 04343	04343	Seal Kit Repair for Serial Code ABM		
R 13800	13800	*Seal Kit Repair for Serial Code 55D & Up		
R 30242	30242	*Seal Kit Repair for Serial Code 68BG TO BG33181628, BG331816 & Up		
R 30241	30241	Reservoir Follower		

*NOTE: Must also purchase 30241 Follower

NOTE: See page 100 to select the proper hydraulic hose for this pump.

Hydraulic Foot Pump



- Free both hands to position and hold the working tool.
- Foot activated release lever.
- Hold-down pin keeps pedal down for storage and transport.
- Angled base bar keeps the pump upright and stable.
- Includes 1/4" (6.4 mm) female coupler with dust cap.

SPECIFICATIONS

Operation	Manual – Foot
Capacity	6,500 psi (448 bar), .117 in. (19 mm) per stroke
Length	16" (406 mm)
Height	Pedal down 6" (152 mm), Pedal up 12" (305 mm)
Width	8" (203 mm)

CAT. NO.	UPC NO.	DESCRIPTION	WEIGHT	
			LBS.	kg
1725	31353	Hydraulic Foot Pump	11	5
R 24496	24496	Seal Kit w/ RD Serial Code		
R 25214	25214	Seal Kit w/ RU Serial Code		
R 33336	33336	Seal Kit w/ VK Serial Code		

NOTE: See page 100 to select the proper hydraulic hose for this pump.

HYDRAULIC PUMP ACCESSORIES

Hydraulic Hose Selection Guide

TOOL CAT. NO./DESCRIPTION	TOOL COUPLER	PUMP CAT. NO.	HOSE CAT./UPC NO.
750 Cable Cutter	1/4" Female Coupler	767	38316
750 Cable Cutter	1/4" Female Coupler	1725	37729
750 Cable Cutter	1/4" Female Coupler	975	17707
777 Bender	3/8" Female Coupler	755, 975, 980 or 960SAPS	11289
782 Bender	3/8" Female Coupler	755 or 975	11289
800 Cable Bender	1/4" Female Coupler	1725	37729
880 Bender	3/8" Female Coupler	755 or 975	11289
882 Bender	3/8" Female Coupler	755 or 975	11289
884 Bender	3/8" Female Coupler	980 or 960SAPS	11289
885 Bender	3/8" Female Coupler	980 or 960SAPS	11289
1731 C-Frame Punch Driver	1/4" Female Coupler	767	38316
1731 C-Frame Punch Driver	1/4" Female Coupler	1725	37729
1731 C-Frame Punch Driver	1/4" Female Coupler	755 or 975	11289
SDK202GL Cable Cutter	3/8" Male Coupler	7475H, 975 or 980	05850, 05851
RK06AT, RK06FT	3/8" Male Coupler	7475H, 975 or 980	05850, 05851
RK1230, RK1240, RK1240K	3/8" Male Coupler	7475H, 975 or 980	05850, 05851
RCCX	3/8" Male Coupler	7475H, 975 or 980	05850, 05851
RK1550	3/8" Male Coupler	7475H, 975 or 980	05850, 05851

Hydraulic Hose Units

- High pressure hydraulic hose units for use with Greenlee hydraulic pumps.
- Equipped with couplers and dust caps.



CAT. NO.	UPC NO.	DESCRIPTION
05850*	05850	10' X 1/4" Hose With (1) 3/8" Male Coupler and (1) 3/8" Female Coupler
05851*	05851	10' X 1/4" Non-Conductive Hose with (1) 3/8" Male Coupler and (1) 3/8" Female Coupler
11289*	11289	6' X 3/8" Hose with (2) 3/8" Male Couplers
17707*	17707	10' X 1/4" Hose with (1) 3/8" Male Coupler and (1) 1/4" Male Coupler
37729*	37729	10' X 1/4" Hose with (2) 1/4" Male Couplers
38316	38316	3' X 1/4" Hose with (1) 1/4" Male Coupler and (1) 1/4" NPT Swivel Threaded Fitting
06302	06302	3' X 1/4" Hose with (1) 1/4" NPT Male Threaded Fitting and (1) 1/4" NPT Swivel Threaded Fitting

* Filled with hydraulic oil.

CAT. NO.	UPC NO.	DESCRIPTION	HOSE UNIT CAT./UPC NO.						COUPLER SET CAT./UPC NO.	
			05850	05851	11289	17707	37729	38316	37614	3548GB/20573
54167	54167	1/4" (6.4 mm) Female Coupler without Dust Cap							1	
54168	54168	1/4" (6.4mm) Dust Cap for Female Coupler							1	
54169	54169	1/4" (6.4 mm) Male Coupler without Dust Cap				1	2	1	1	
54170	54170	1/4" (6.4 mm) Dust Cap for Male Coupler				1	2	1	1	
4018GB	50807	3/8" (9.6 mm) Female Coupler with Dust Cap								1
4033GB	50823	3/8" (9.6 mm) Male Coupler with Dust Cap			2	1				1
41877	41877	3/8" (9.6 mm) Female Coupler without Dust Cap	1	1						
41941	41941	3/8" (9.6 mm) Male Coupler without Dust Cap	1	1						
41834	41834	3/8" (9.6 mm) Dust Cap for 41941/41877 Couplers	2	2						