

WIRE MANAGEMENT



Fig. 1



Fig. 2

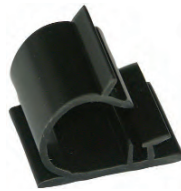


Fig. 3



Fig. 4



Fig. 5



Fig. 6



Fig. 7



Fig. 8



Fig. 9



Fig. 10

Wire Management

| Retail Part No. | Figure No. | Description | Length (Inches) | Width (Inches) | Holding Diameter (Inches) | Tensile Strength (Pounds) | Color |
|-----------------|------------|----------------------------------|------------------|----------------|---------------------------|---------------------------|---------|
| 34-316-C | 1 | Nylon Cable Clip | 1 | 3/8 | 3/8 | N/A | Natural |
| 34-378-C | 2 | Nylon Cable Clip | 1 1/4 | 3/4 | 5/8 | N/A | Natural |
| 34-380-C | 3 | Adhesive Mount Locking Clamp | 1 | 1 | 1/2 | 12 | Black |
| 34-383-C | 4 | Adhesive Mount Locking Clamp | 1 | 1 | 3/8 | 12 | Black |
| 34-384-C | 5 | Adjustable Adhesive Mount Clamps | 1 1/2 | 3/4 | 1 1/4 | 12 | Natural |
| 34-394-C | 6 | Nylon Cable Clamps | 1 1/8 | 1/2 | 1/2 | N/A | Natural |
| 34-396-C | 7 | Adhesive Mount Locking Clamp | 1 | 1/2 | 1/2 | 12 | Black |
| 34-402-C | 8 | Nylon Cable Clamps | 1 1/4 | 1/2 | 5/8 | N/A | Natural |
| 34-480-C | 9 | Flat Adhesive Backed Tie Mount | 3/4 | 3/4 | N/A | 12 | Natural |
| 34-482-C | 10 | Flat Adhesive Backed Tie Mount | 1 | 1 | N/A | 12 | Natural |