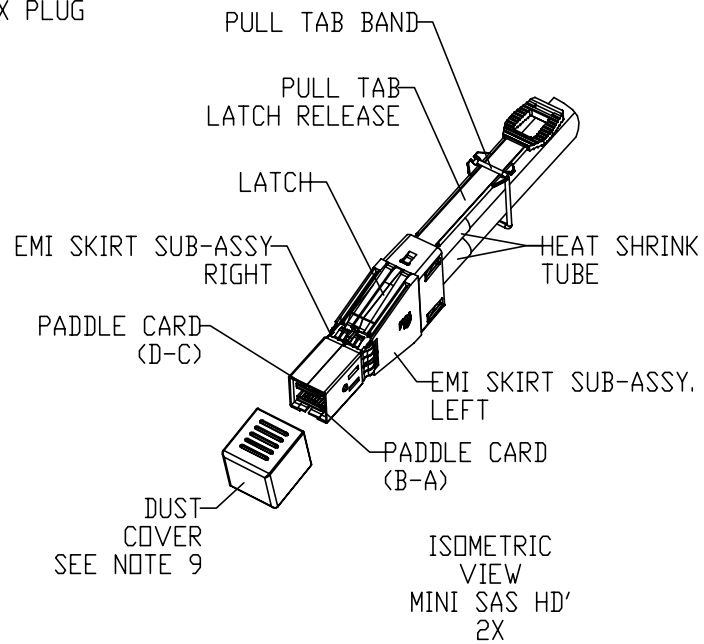
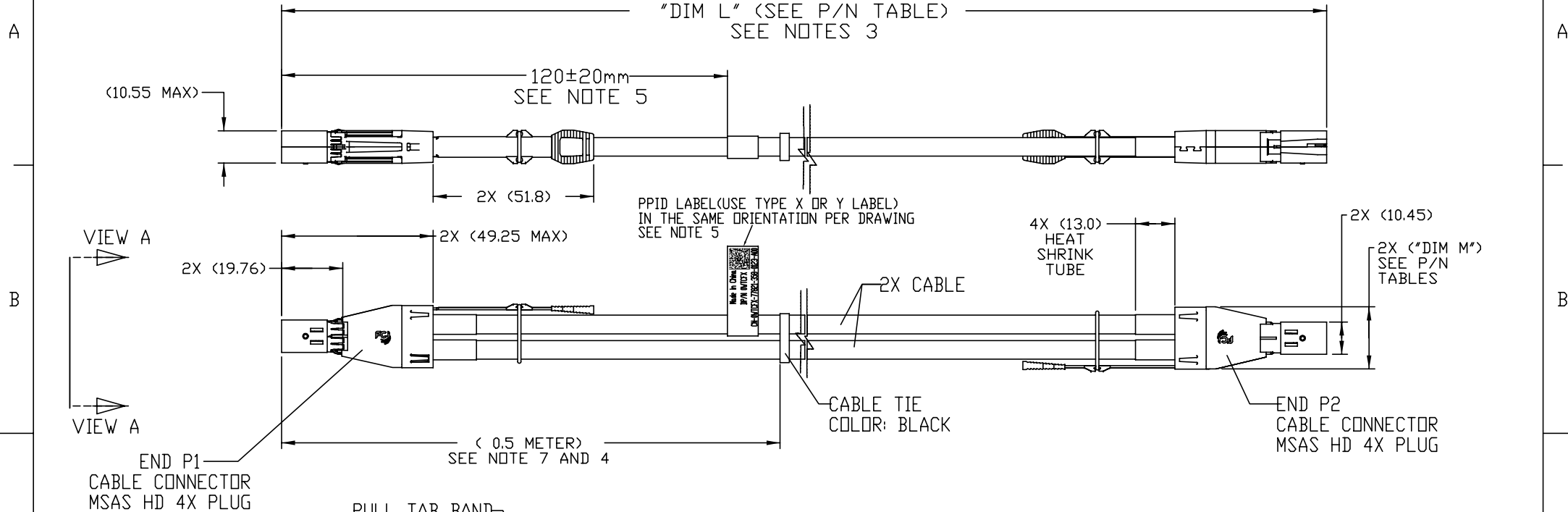


1	2	3	4
PRODUCT NUMBER	DESCRIPTION	NOTES	
10129376-XXXXLF	NON-HF	SEE SHT. 3	

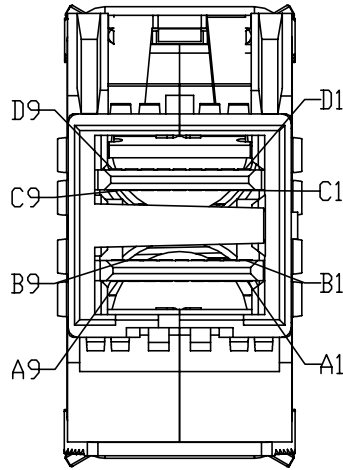


dr	Tom Feng	2014-09-04	projection	mm	size	A3	scale	NONE
eng	Tom Feng	2014-09-04			ecn no	ECN-ELX-N-18706-1		rel level
chr	Delhy Liu	2014-09-04	product family	C&A				
appr	Frank Mao	2014-09-04						
www.fci.com	cat. no.	title			dwg no	10129376	rev	B
		FINAL ASSEMBLY (PASSIVE) MSAS HD 4X ASSEMBLY (APPLICATION UP TO 12Gb/s)						

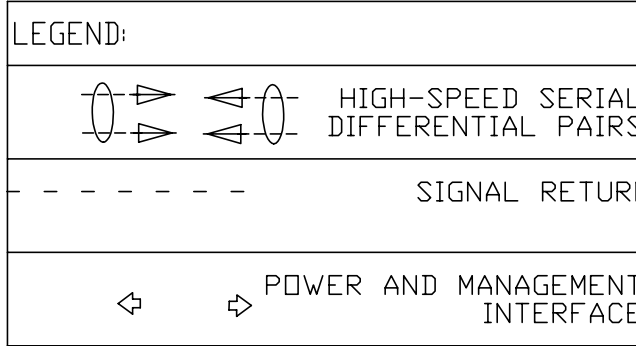


Copyright
FCI

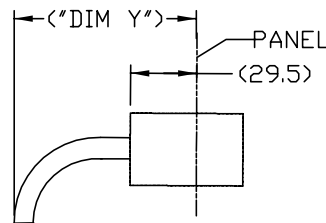
PRODUCT NUMBER	DESCRIPTION	NOTES
10129376-XXXXLF	NON-HF	SEE SHT. 3



P1
VIEW A
SCALE
4:1



MINIMUM CABLE BEND TABLE		
CABLE	("DIM Y") HF	("DIM Y") NON-HF
24 AWG	92.8	92.8
26 AWG	87.5	85.1
28 AWG	81.5	79.1
30 AWG	77.9	74.3



BEND RADIUS
TOP VIEW OF
CONNECTOR

WIRING LIST (SEE NOTE 6)				
END P1		END P2		
POSITION	SYMBOL		POSITION	SYMBOL
D9	GROUND	-----	B9	GROUND
D8	Tx2-		B8	Rx2-
D7	Tx2+		B7	Rx2+
D6	GROUND	-----	B6	GROUND
D5	Tx0-		B5	Rx0-
D4	Tx0+		B4	Rx0+
D3	GROUND	-----	B3	GROUND
D2	Vman		B2	ModPrsl
D1	Vact		B1	Vact
C1	SCL		A1	Reserved
C2	SDA		A2	Intl
C3	GROUND	-----	A3	GROUND
C4	Tx1+		A4	Rx1+
C5	Tx1-		A5	Rx1-
C6	GROUND	-----	A6	GROUND
C7	Tx3+		A7	Rx3+
C8	Tx3-		A8	Rx3-
C9	GROUND	-----	A9	GROUND
B9	GROUND	-----	D9	GROUND
B8	Rx2-		D8	Tx2-
B7	Rx2+		D7	Tx2+
B6	GROUND	-----	D6	GROUND
B5	Rx0-		D5	Tx0-
B4	Rx0+		D4	Tx0+
B3	GROUND	-----	D3	GROUND
B2	ModPrsl		D2	Vman
B1	Vact		D1	Vact
A1	Reserved		C1	SCL
A2	IntL		C2	SDA
A3	GROUND	-----	C3	GROUND
A4	Rx1+		C4	Tx1+
A5	Rx1-		C5	Tx1-
A6	GROUND	-----	C6	GROUND
A7	Rx3+		C7	Tx3+
A8	Rx3-		C8	Tx3-
A9	GROUND	-----	C9	GROUND

SHIELD-----SHIELD

dr	Tom Feng	2014-09-04	projection		mm	size	A3	scale	NONE		
eng	Tom Feng	2014-09-04				ecn no		SEE SHEET 1			
chr	Delhly Liu	2014-09-04				rel level		Released			
appr	Frank Mao	2014-09-04	product family	C&A							
		title			FINAL ASSEMBLY (PASSIVE)		dwg no		10129376	rev	B
www.fci.com		cat. no.			-		Product - Customer Drw		sheet 2 of 5		

PART NUMBER (NON-HALOGEN FREE) SEE NOTE 11	CUSTOMER PART NUMBER	MFG ID	CUSTOMER REV	"DIM L" LENGTH & TOLERANCE (mm)	"DIM M" (mm)	AWG
10129376-2005LF	WTCFX	77821	A00	500±50	17.3	30
10129376-3020LF	GYK61	77821	A00	2000±100	17.3	28
10129376-4040LF	85W3R	77821	A00	4000±100	20.1	26
10129376-4060LF	87Y66	77821	A00	6000±100	20.1	26

NOTES:

1. MATERIAL:

BACK SHELLS: ZINC ALLOY/ COPPER UNDERPLATE/ NICKEL OVERPLATE
 (B) PULL TAB: PA66
 LATCH : STAINLESS STEEL
 FERRULE: BRASS
 EMI SKIRT: STAINLESS STEEL
 LOCTITE
 PADDLE CARD: PRINTED CIRCUIT SUBSTRATE
 HEAT SHRINK TUBE: POLYOLEFIN

2. THIS PRODUCT MEETS THE RESTRICTION OF HAZARDOUS SUBSTANCES IN ELECTRICAL AND ELECTRONIC EQUIPMENT (RoHS) DIRECTIVE (2011/65/EU)

(3) THIS DIMENSION IS A FINISHED PRODUCT LENGTH.

(4) UNLESS OTHERWISE SPECIFIED ASSEMBLED LENGTH TOLERANCE IS TO BE:
 "DIM L" < 1 METER = ±25mm

(5) LABEL CONTENTS: (SEE ATTACHED DELL PPID LABEL EXAMPLE),
 LABEL USE TYPE X OR Y LABEL IN THE SAME ORIENTATION (PER DELL SPEC. 13190_A30-00_2_06_2014).
 SEE NEXT PAGE FOR DETAIL.

(6) ALL CABLE ASSEMBLIES 100% TESTED FOR CONTINUITY AS DEFINED IN WIRING LIST.

7. PLACE A CABLE TIE EVERY 0.5 METER ON ALL ASSEMBLIES, UNLESS OTHERWISE SPECIFIED.
 IN CASE OF 0.5 METER CABLE ASSEMBLY, CABLE TIE IS TO BE APPLIED AT THE MIDWAY POINT.

8. OTHER TESTING PERFORMED AS REQUIRED BY PRODUCT SPECIFICATION: GS-12-651.

(9) PACKAGING OF LEAD FREE PRODUCTS MEETS LABELING AND PACKAGING PER SPECIFICATION GS-14-920. PACKAGE CABLE ASSEMBLIES PER GS-14-1272.
 DUST COVERS ARE TO BE ASSEMBLED PRIOR TO PACKAGING.
 USE ONE VELCRO STRAP (BLACK) TO COIL CABLE ASSEMBLY WHEN PACKING.
 CABLE ASSEMBLY SHOULD BE PLACED IN A ZIP-LOCK BAG,
 AND ATTACH DELL PPID LABEL (USE TYPE A LABEL PER DELL SPEC. 13190_A30-00_2_06_2014) TO BAG IN THE SAME ORIENTATION.(SEE NEXT PAGE FOR LABEL DETAIL INFORMATION),
 AND ATTACH DELL CARTON/BOX PPID LABEL (USE TYPE J LABEL (PER DELL SPEC. 13190_A30-00_2_06_2014)) TO CARTON/BOX IN THE SAME ORIENTATION.(SEE NEXT PAGE FOR LABEL DETAIL INFORMATION)


10. A "△" SYMBOL WILL BE NEXT TO ANY DIMENSION, VIEW, OR NOTE WHICH HAS BEEN MODIFIED WITH THE CURRENT DRAWING REVISION. THE CURRENT REVISION WILL BE SHOWN IN THE SYMBOL.

(11) HALOGEN FREE RAW CABLE CAN BE USED AS A SUBSTITUTE ON NON-HF PRODUCT NUMBERS.

12. CABLE ASSEMBLY IS DESIGNED FOR APPLICATIONS UP TO 12Gb/s (SAS 3.0)

13. MATES TO SERIES: 10112626 or 10112627 or 10112628

14. THIS ASSEMBLY EEPROM MAP FOLLOWS DELL SPECIFICATION (ENG0012797 CABLE EEPROM SPEC,Revision:1.3)

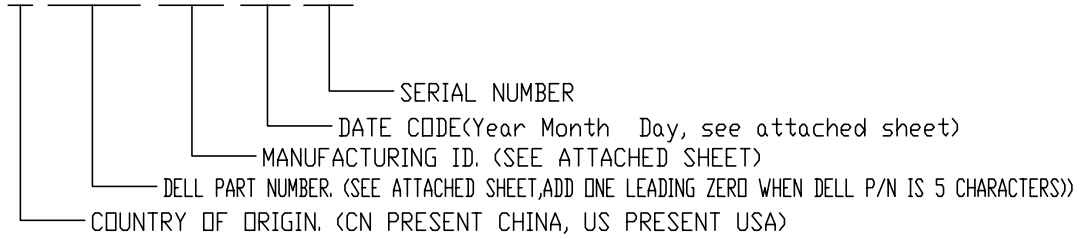
dr	Tom Feng	2014-09-04	projection	mm	size	A3	scale	NONE
eng	Tom Feng	2014-09-04			ecn no	SEE SHEET 1		
chr	Delhly Liu	2014-09-04	product family	C&A	rel level	Released		
appr	Frank Mao	2014-09-04						
			title FINAL ASSEMBLY (PASSIVE) MSAS HD 4X ASSEMBLY (APPLICATION UP TO 12Gb/s)		dwg no 10129376			
www.fci.com	cat. no.	-	Product - Customer Drw		sheet 3 of 5			



Copyright FCI

PART NUMBER (NON-HALOGEN FREE) SEE NOTE 11	CUSTOMER PART NUMBER	MFG ID	CUSTOMER REV	AWG
10129376-2005LF	WTCFX	77821	A00	30
10129376-3020LF	GYK61	77821	A00	28
10129376-4040LF	85W3R	77821	A00	26
10129376-4060LF	87Y66	77821	A00	26

CN-0WTCFX-77821-358-0123



TYPE X LABEL EXAMPLE FOR CABLE

(Type X Label for cables 6.5mm diameter or smaller(30AWG & 28AWG))



CUSTOMER REV.(SEE ATTACHED SHEET)

1st Character present year codes

Year	2006	2007	2008	2009	2010	2011	2012	2013	AND SO ON
Code	6	7	8	9	0	1	2	3	

2nd Character present month codes

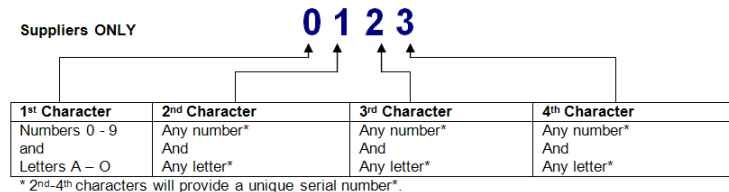
Month	Jan	Feb	Mar	Apr	May	June	July	Aug	Sep	Oct	Nov	Dec
Code	1	2	3	4	5	6	7	8	9	A	B	C

3rd Character present day codes

Day	1st	2nd	3rd	4th	5th	6th	7th	8th	9th	10th	
Code	1	2	3	4	5	6	7	8	9	A	
Day	11th	12nd	13rd	14th	15th	16th	17th	18th	19th	20th	
Code	B	C	D	E	F	G	H	I	J	K	
Day	21st	22nd	23rd	24th	25th	26th	27th	28th	29th	30th	31th
Code	L	M	N	O	P	Q	R	S	T	U	V

SERIAL NUMBER:

Suppliers will be allowed the use of characters 0-9, A-O in the first position of the sequence number, with no restrictions on the 2nd through 4th positions provided that each sequence number is indeed unique*.

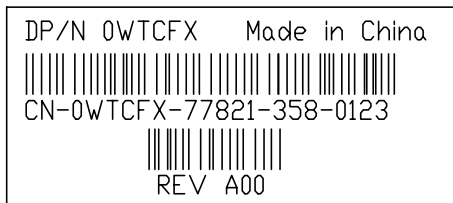


TYPE Y LABEL EXAMPLE FOR CABLE

(Type Y Label for cable diameters larger than 6.5mm(26AWG))



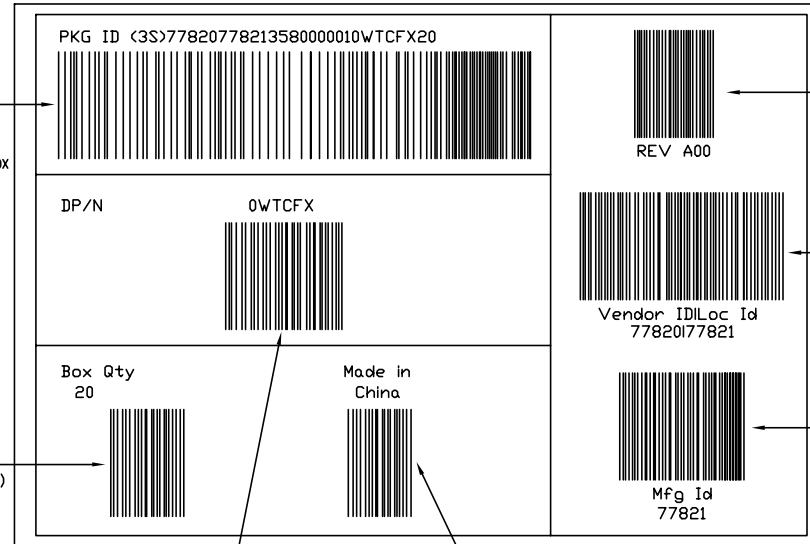
TYPE A LABEL EXAMPLE FOR BAG



dr	Tom Feng	2014-09-04	projection	mm	size	A3	scale	NONE	
eng	Tom Feng	2014-09-04			ecn no	SEE SHEET 1			
chr	Delhly Liu	2014-09-04				rel level	Released		
appr	Frank Mao	2014-09-04	product family	C&A					
www.fcicom	title	FINAL ASSEMBLY (PASSIVE)			dwg no	10129376		rev	B
		MSAS HD 4X ASSEMBLY (APPLICATION UP TO 12Gb/s)							
cat. no.		-		Product - Customer Drw			sheet 4 of 5		

PART NUMBER (NON-HALOGEN FREE) SEE NOTE 11	CUSTOMER PART NUMBER	MFG ID	CUSTOMER REV	AWG
10129376-2005LF	WTCFX	77821	A00	30
10129376-3020LF	GYK61	77821	A00	28
10129376-4040LF	85W3R	77821	A00	26
10129376-4060LF	87Y66	77821	A00	26

TYPE J LABEL EXAMPLE ON CARTON/BOX,



READ SHOW "3S77820778213580000010WTCFX20" WHEN SCAN THIS BARCODE

Identifier
Vendor ID (FCI IS 77820)
Mfg Id (FCI IS 77821)
DATE CODE (Year Month Day, see sheet 4)

Box Qty
The total number of pieces contained in that box

DELL PART NUMBER.
SEE ATTACHED SHEET, ADD ONE LEADING ZERO
WHEN DELL P/N IS 5 CHARACTERS

Unique Number (six numeric characters, 000001~999999),
Each carton/box will have a unique number that will not be duplicated for the same date code

READ SHOW "20" WHEN SCAN,
(Box Qty---The total number of pieces contained in that box)

READ SHOW "0WTCFX" WHEN SCAN,
(Note: DELL PART NUMBER,
SEE ATTACHED SHEET, ADD ONE LEADING ZERO
WHEN DELL P/N IS 5 CHARACTERS)

READ SHOW "CN" WHEN SCAN,
(Note: CN present China)

READ SHOW "A00" WHEN SCAN

READ SHOW "77820177821" WHEN SCAN
(NOTE: Must include the Pipebar "I")
(Vendor ID (FCI IS 77820) and
Loc Id (FCI IS 77821))

READ SHOW "77821" WHEN SCAN,
(Note: Mfg Id (FCI IS 77821))



Copyright FCI

dr	Tom Feng	2014-09-04	projection 	mm 	size	A3	scale	NONE
eng	Tom Feng	2014-09-04			ecn no	SEE SHEET 1		
chr	Delhy Liu	2014-09-04			rel level	Released		
appr	Frank Mao	2014-09-04	product family	C&A				
		title			FINAL ASSEMBLY (PASSIVE)		rev	
www.fci.com		cat. no.			-		B	
		Product - Customer Drw			10129376		sheet 5 of 5	