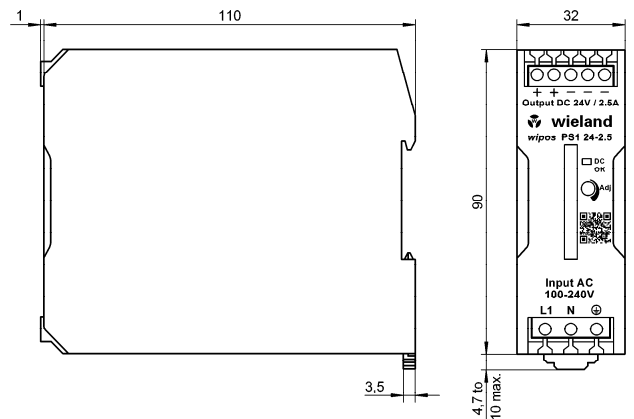
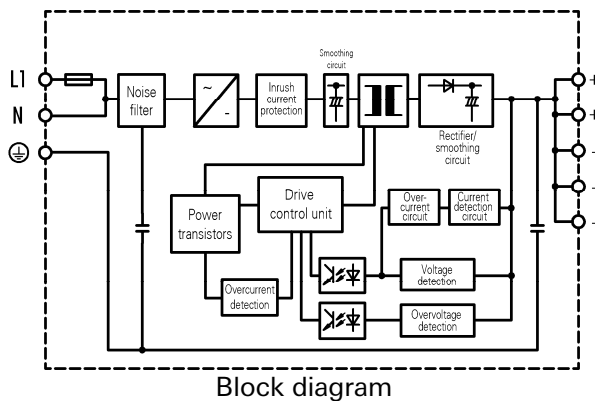




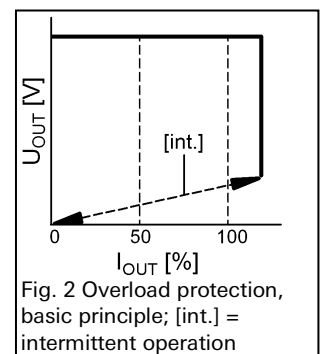
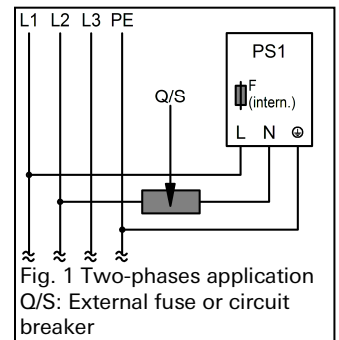
wipos PS1 2.5
Switching power supply
24 V DC/2.5 A
81.000.6520.0

- Primary switching power supply, single phase
- Output: 24 V DC/2.5 A (adjustable 21.6 - 27.6 V DC)
- Input: 85 - 264 V AC; 90 - 350 V DC
- Parallel operation possible
- Full load up to 60 °C
- Vertical mount
- UL1310 class 2 power supply



Technical data

wipos PS1 2.5	Part number: 81.000.6520.0
Input (L, N)	
Rated voltage AC	100 ... 240 V AC
Voltage range AC	85 ... 264 V AC
Line frequency AC	47 ... 450 Hz
Voltage range DC	90 ... 350 V DC
Rated input current 115/230 V AC typ.	1.1 A/0.7 A
Inrush current 115/230 V AC max.	16 A/32 A (5 ms)
Input fuse	6.3 A/250 V (internal)
Power factor correction filter (PFC)	-
Two-phases application	85 ... 264 V AC (see Fig. 1 Two-phases application) A fuse or circuit breaker has to be connected on N terminal
Output (+, -)	
Rated output power	60 W
Rated output voltage	24 V DC
Rated output current	2.5 A DC
Operation indicator Output voltage OK	"DC OK", LED green Display range ($U_o \geq 19.4$)
Output voltage trim range	21.6 V ... 27.6 V
Rated overload protection	121 % - 160 % (see Fig. 2 Overload protection)
Power boost function	120 %, max. 10 s
Efficiency typ.	88 %
Line regulation	± 0.5 %
Load regulation	± 1.5 %
Temperature coefficient	± 0.05 %/K



Technical data

wipos PS1 2.5		Part number: 81.000.6520.0
Ripple & noise		< 50 mV _{ss}
Hold up time 115/230 V AC		> 25 ms/> 129 ms
Parallel operation		yes (max. 2 devices)
Serial operation		yes (max. 2 devices with external diodes)
General data		
Isolation voltage (input/output)		3000 V AC/4242 V DC
Isolation resistance (input/output)		100 MOhm
Operating ambient temperature		-40 °C ... +70 °C (UL: max. 40 °C)
Storage temperature		-40 °C ... +85 °C
Derating		A. 60 °C ... 70 °C: 2.5 %/K B. 40 °C ... 70 °C: 1.67 %/K (see Fig. 3 Derating)
Humidity in operation		0 - 95 % RH, non-condensing
Ventilation/Cooling		free convection
MTBF		450,000 h
Pollution degree		2
Degree of protection		IP 20
Safety class		1
Mounting		DIN rail 35 mm (EN 60715)
Mounting conditions (free space)		20 mm horizontal, 75 mm vertical
Dimensions (W x H x D)		32 x 90 x 110 mm
Weight		260 g
Housing material		Polycarbonate (PC)
Connections		
Connector cross section input	solid/stranded	0.35 - 4 mm ² /0.25 - 2,5 mm ² (AWG22 - 12/AWG22 - 14)
Connector cross section output	solid/stranded	0.5 - 4 mm ² /0.5 - 2,5 mm ² (AWG22 - 12/AWG22 - 14)
Connector cross section PE	solid/stranded	min. 2.5 mm ² (AWG14)
Strip length		8 mm
Torque		0.5 ... 0.6 Nm
Approvals and Standards		
Standards		SELV: EN50178 / EN60950-1 / UL60950-1 PELV: EN50178 / EN60204-1
Approvals		CE / cURus / cULus HAZ.LOC/ LR
Control elements		
Adj		Trim potentiometer for fine adjustment of U _o
Terminal assignment		
+		2 x output voltage 24 V, positive output terminal (internally connected)
-		3 x output voltage 24 V, negative output terminal (internally connected)
L		AC: phase conductor, DC: no polarity
N		AC: neutral conductor, DC: no polarity
⊕ (PE)		PE (Ground), always connect

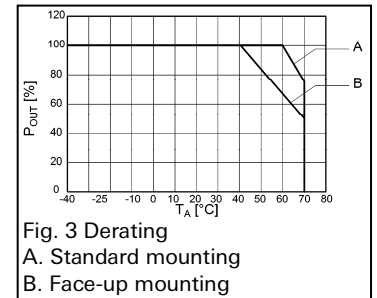


Fig. 3 Derating
A. Standard mounting
B. Face-up mounting