

ZVC30NP Series

New Product

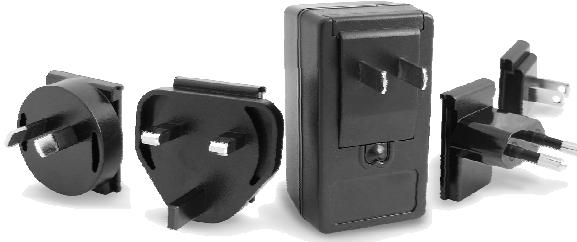


Single output 30W AC/DC Wall Plug Adapters

The New 30Watt NP Series from Red Rocket are ideal for portable computing, multimedia, industrial, networking, printing and battery charging applications.

The new NP series of power adapters are fully compliant with CEC and Energy Star IV requirements and provide their full output power without the need for fan cooling.

The NP series have an Inter-Changeable connector pack allowing you to use the NP Series Globally.



Features :

- > Universal Input
- > Constant Current Option
- > Desktop Style
- > Efficiency to 80%
- > Convection cooled
- > EN55022-B—Level B
- > CEC Compliant
- > Energy Star IV Compliant
- > -10°C to 40°C Operating
- > O/P's from 11V thru 50V

Model Number	Output	I Min	I Max	Power
ZVC30NP12-I	+12V	0.0A	2.5A	30W
ZVC30NP15-I	+15V	0.0A	2.0A	30W
ZVC30NP18-I	+18V	0.0A	1.67A	30W
ZVC30NP24-I	+24V	0.0A	1.25A	30W
ZVC30NP30-I	+30V	0.0A	1.0A	30W
ZVC30NP36-I	+36V	0.0A	0.833A	30W
ZVC30NP48-I	+48V	0.0A	0.625A	30W

INPUT SPECIFICATIONS		
AC Input	Universal	90 to 264V
Efficiency	Typical	80%
Input Frequency		47—63Hz
Input Current		0.7A Max
Inrush Current	Max	40A @ 115vac 80A @ 230VAC

MECHANICAL SPECIFICATIONS	
Input Connector	Full Set (I suffix)
Output Connector	Rt angle Jack Connector ID : 2.54, OD : 5.54 & L : 9.5
Cable length / UL	1524mm ± 30mm / UL2468
Cable gauge	12V/15V/18V/24V : 20AWG 30V/36V/48V : 22AWG
Size	82.0mm x 43.5mm x 35.7mm
Weight	250g



ZVC30NP Series



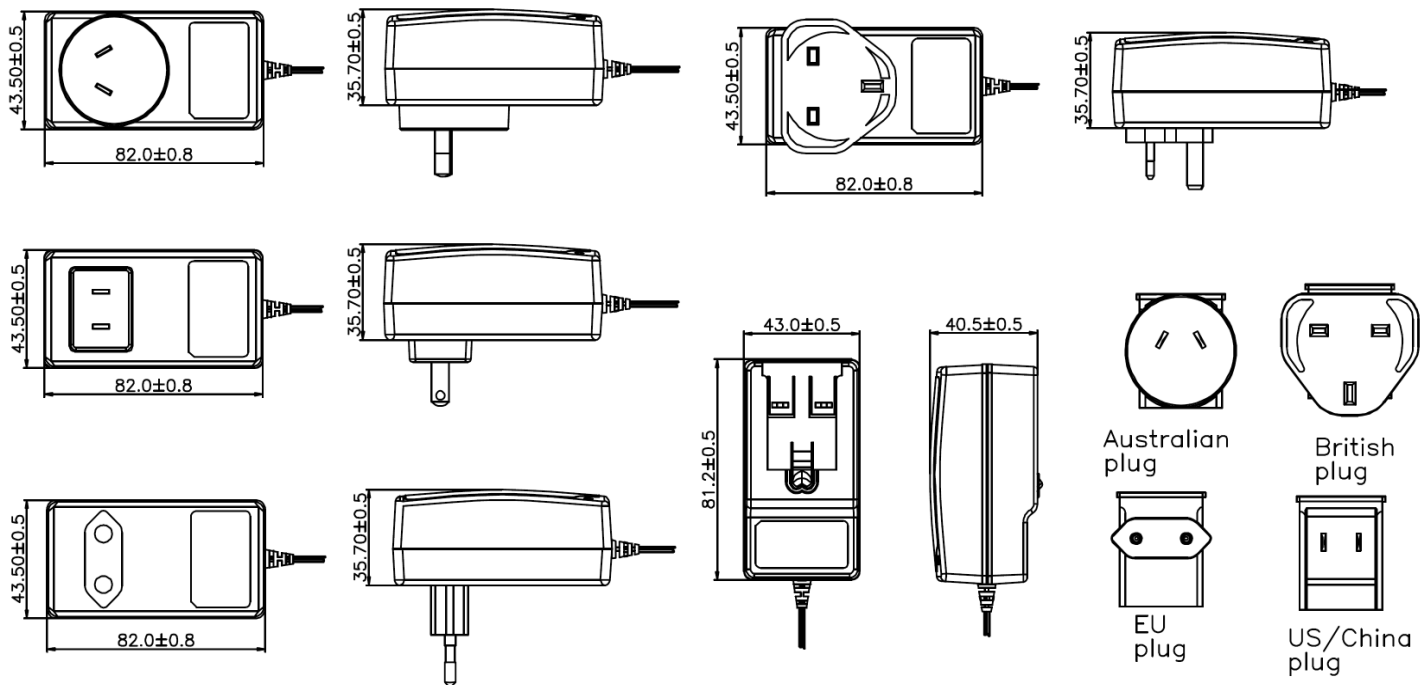
Single output 30W AC/DC Wall Plug Adapters

ENVIRONMENTAL SPECIFICATIONS	
Operating Temperature	-10° C to +40° C De-Rate from 30° C @ 100% to 75% load @ 40 ° C.
Storage Temperature	-20° to + 85° C
Cooling	Convection
Relative humidity	20% to 90% RH
MTBF	≥100,000Hrs

OUTPUT SPECIFICATIONS		
Output Power		30W
Minimum Load		0.0A
Hold-Up Time		30ms @ 230VAC 10MS @ 115VAC
Line Regulation		+/-2% Max
Load Regulation		+/- 5% Max
Transient Response		<5%
OCP		Auto Recovery
Overload Protection		Auto Recovery
SC Protection		Short Term
Ripple and Noise		2% P-P Max
Output Rise Time		<10ms

EMC AND SAFETY SPECIFICATIONS	
CEC Mark	Complies with standby power (@ no load) < 0.3 W.
EMC—Radiated/ Conducted	EN55022,CISPR22, FCC Part 15 Class B
Agency Approvals	UL / TUV / EN60950—1 , CE, CB
Safety Standards	UL,CE,CB , EN60950-1
EMC—Environmental	EN61000-3-2,3 EN61000-4-2,3,4,5,6,8,11

Mechanical Drawing: (mm)



A full set of connectors is delivered with each product order. If a specific connector is required then add a U,A,E or B to the I suffix on your order.

