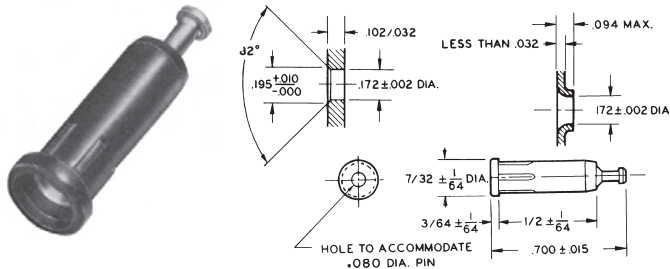


## INSULATED VERTICAL TEST JACK PC MOUNT

The vertical test jack is designed for use on circuit boards of audio, digital and RF circuitry where dependable, low cost test points are required. The contact, in formed or machined versions, is insulated to prevent accidental hand contact. The new formed contact features a unique spring loaded shank which retains the jack in the circuit board throughout the wave soldering operation.

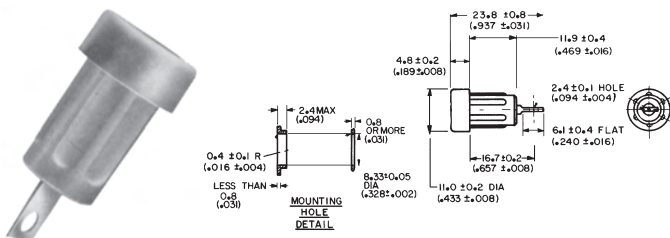
Cat. No.	Colour	Net Price
<b>MACHINED CONTACT, SILVER PLATING</b>		
105-0852-001	Red	\$1.39
105-0853-001	Black	1.39
105-0854-001	Green	1.39
<b>FORMED CONTACT, SILVER PLATING</b>		
105-2201-201	White	1.30
105-2202-201	Red	1.30
105-2203-201	Black	1.30



## RIB-LOC® PRESS-IN TIP JACKS

Installs by pressing into mounting hole, no mounting hardware required. Closed entry blocks access of probes greater than .085" (2.16mm). Nylon UL approved for self extinguishing. Silver-plated beryllium copper contact spring. Brass solder terminal silver-plated and iridized for good solderability. Accepts .080" tip plug. Current: 5 amps. Voltage breakdown: 3500 Vrms min. Contact-to-panel: 1 pF nominal.

Cat. No.	Colour	Net Price
105-1041-001	White	\$2.41
105-1042-001	Red	2.41
105-1043-001	Black	2.41
105-1044-001	Green	2.41



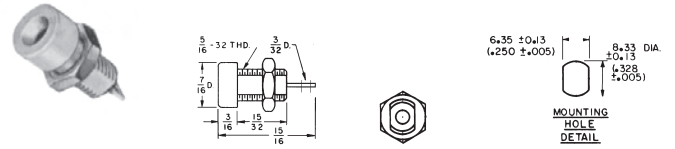
108-2300-801

## FOR STANDARD BANANA PLUG 4.44mm (.175") DIA.

**Formed Contact:** Current rating: 15 amps, breakdown voltage: 7000 Vrms min., contact resistance: 0.010 ohms max., contact panel-to-panel: 2.4pF nominal.

## RIB-LOC INSULATED BANANA JACKS

Cat. No.	Colour	Net Price
<b>FOR STANDARD BANANA PLUG .175" FORMED CONTACT</b>		
108-2301-801	White	\$1.05
108-2302-801	Red	1.05
108-2303-801	Black	1.05
108-2304-801	Green	1.05
108-2307-801	Yellow	1.05
108-2310-801	Blue	1.05



108-0900-001

## INSULATED BANANA JACKS THREADED BODY TYPE

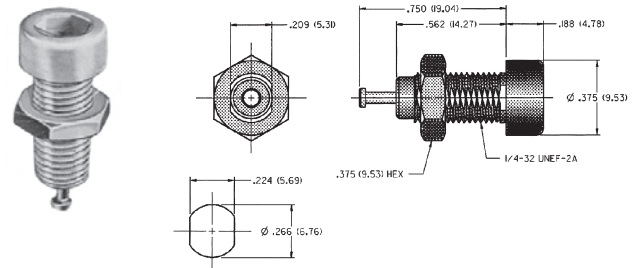
These threaded nylon (Per Mil-P-20693A) insulated body type Banana Jacks with brass, cadmium plated, machined or formed contact comes with nickel plated mounting nut.

### FOR STANDARD BANANA PLUG 4.44mm (.175") DIA.

**Formed Contact:** Current rating: 15 amps., breakdown voltage: 7000 Vrms min., contact resistance: 0.010 ohms max., contact-to-panel: 2.4pF nominal.  
**Machined Contact:** Same specifications as Formed Contact.

## INSULATED BANANA JACKS THREADED BODY TYPE

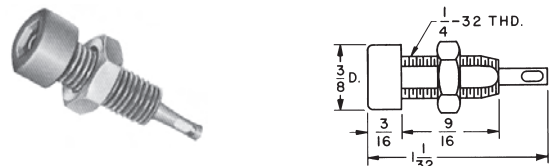
Cat. No.	Colour	Net Price
<b>FOR STANDARD PLUGS .175" DIA. FORMED CONTACT</b>		
108-0901-001	White	\$1.23
108-0902-001	Red	1.23
108-0903-001	Black	1.23
108-0904-001	Green	1.36
108-0907-001	Yellow	1.23
108-0908-001	Brown	1.36
108-0910-001	Blue	1.23



## DELUXE TIP JACK

For standard tip plug, 2 mm (.080") dia. Molded body with recessed closed entry design contact. Silver-plated beryllium copper contact spring. Brass solder terminal is hot tin dipped. Current rating: 10 amps. Voltage breakdown: 11000 VDC. Capacity to 1/8" panel: 2.0 pf. 1/4-32 nut furnished.

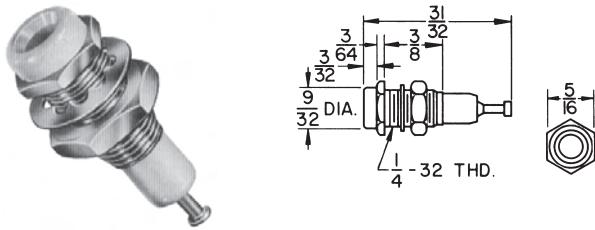
Cat. No.	Colour	Net Price
105-0601-001	White	\$2.52
105-0602-001	Red	2.52
105-0603-001	Black	2.52
105-0604-001	Green	2.52
105-0607-001	Yellow	2.52
105-0610-001	Blue	2.52



## INSULATED STANDARD TIP JACK

Molded Nylon body. Accepts .080" dia. tip plug. Contact: Phosphor bronze. Finish: Bright tin. Current: 10 amps. Breakdown voltage: 5700 Vrms min. Contact-to-contact: 2pF nominal.

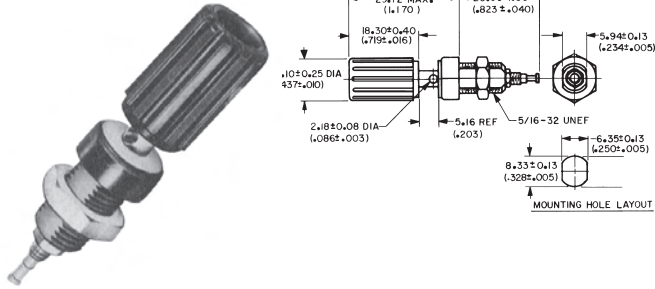
Cat. No.	Colour	Net Price
105-0801-001	White	\$1.45
105-0802-001	Red	1.45
105-0803-001	Black	1.45
105-0804-001	Green	1.45
105-0807-001	Yellow	1.45
105-0810-001	Blue	1.46



## INSULATED METAL CLAD TIP JACK MILITARY TYPE

Machined contact with turret. For military or industrial applications. Closed entry blocks access of probes greater than .085" (2.16mm). Nylon UL approved for self extinguishing. Accepts .080" tip plug. Manufactured to meet MIL-C-39024/10. Nickel-plated brass jacket. Gold-plated beryllium copper contact spring. Current: 10 amps. Breakdown voltage: 5700 Vrms min. Contact-to-panel: 2pF nominal.

Cat. No.	Colour	Net Price
105-0201-200	White	\$5.32
105-0202-200	Red	5.32
105-0203-200	Black	5.32
105-0204-200	Green	5.32
105-0210-200	Blue	5.32



## INSULATED STANDARD BINDING POSTS

Fully insulated nylon binding post solves many common design problems. Nylon is flatted to prevent turning. Metal body is silver plated with turret terminal. Threaded nylon body withstands 6.0 lb. in. (7 kg. cm.) of thread stripping force. For panel thickness up to .281" (7.15mm). Current rating: 15 amps. Breakdown voltage 5700 Vrms. Capacitance 3.3pF.

Cat. No.	Colour	Net Price
111-0101-001	White	\$4.54
111-0102-001	Red	4.54
111-0103-001	Black	4.54
111-0104-001	Green	4.90
111-0107-001	Yellow	4.54
111-0110-001	Blue	4.90

# SMA Coaxial Connectors

### ELECTRICAL RATINGS/MATERIAL SPECIFICATIONS:

**Impedance:** 50 ohms  
**Frequency Range:** 0-12.4 GHz  
**Working Voltage:** 335 Vrms maximum at sea level with 1000 Vrms minimum at sea level with RG-58/U cable  
**Dielectric Withstanding Voltage:** 5000 Meg Ohms minimum  
**Insulation Resistance:** 5000 Meg Ohms minimum  
**Contacts:** Male - Brass per QQ-B-626  
 Female - Beryllium copper per QQ-C-530  
 TFE Fluorocarbon per L-P-403  
 Bronze per QQ-B-626  
 Centre Contacts - Gold per MIL-G-45204 .00003" min.  
**Insulators:** Bodies & Mounting Hardware - Gold per MIL-G-45204 .00001" min. or Nickel per QQ-N-290  
**Bodies & Mounting Hardware:**  
**Finish:**

### Contact Resistance:

	Milliohms Max	
	Initial	After Environmental
<i>Straight Connector (Gold plated)</i>		
Centre contact	3.0	4.0
Outer contact	2.0	N/A
Braid to Body	0.5	N/A
<i>RA connector (Gold plated)</i>		
Centre contact	4.0	6.0
Outer contact	2.0	N/A
Braid to body	0.5	N/A

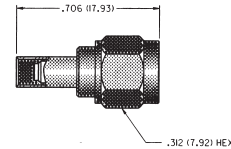


## HAND CRIMP TOOL

Precision Buchanan hand crimping tool makes cable assembly fast and easy. Crimping tool features interchangeable steel dies for Cable Groups 1, 2 and 3. Ratchet action of tool controls crimping operation for precise uniform crimps.

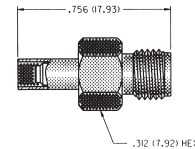
Cat. No.	Description	Connector Type	Net Price
140-0000-952	Hand Crimp Tool Frame Only		\$237.44
140-0000-953	Die for .047" dia. flexible cable; RG 178, RG 316, RG 316DS and Contact Crimp w/stop	MMCX*, MCX	494.12
140-0000-951	Die for RG 178, 316, 316DS, 58, 142, Belden 735A, LMR-100 LMR-195, LMR-200	MCX, SMB, SMC, SMA, 75 OHM SMB	288.33

\*Use 140-0000-951 for MMCX straight cabled bulkhead jack body crimp.



## SMA FLEXIBLE CABLE—STRAIGHT CRIMP TYPE PLUG—SOLDER OR CRIMP CONTACT

Cat. No.	Cable Type	Plating	Net Price Each	
			1-49	50-Up
142-0402-011	RG-178/U, RG-196/U	Gold	\$16.76	\$9.70
142-0403-011	RG-161/U, RG-174, RG-188, RG-316	Gold	13.03	7.54
142-0404-011	RG-188DS, RG-316DS	Gold	13.29	7.69
142-0407-011	RG-58/U, RG-141, RG-303	Gold	15.95	9.23
142-0408-011	RG-55/U, RG-142, RG-223, RG-440	Gold	16.41	9.50
142-0407-016	RG-58/U, RG-141, RG-303	Nickel	14.88	8.61
142-0403-016	RG-161/U, RG-174, RG-188, RG-316	Nickel	11.99	6.94



## SMA FLEXIBLE CABLE—STRAIGHT CRIMP TYPE JACK—SOLDER OR CRIMP CONTACT

Cat. No.	Cable Type	Plating	Net Price Each	
			1-49	50-Up
142-0302-011	RG-178/U, RG-196/U	Gold	\$18.28	\$11.06
142-0303-011	RG-161/U, RG-174, RG-188, RG-316	Gold	18.34	11.10
142-0303-016	RG-161/U, RG-174, RG-188, RG-316	Nickel	17.29	10.46
142-0307-011	RG-58/U, RG-141, RG-303	Gold	18.34	11.10
142-0308-011	RG-55/U, RG-142, RG-223, RG-400	Gold	17.51	10.59