

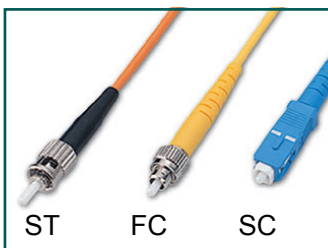
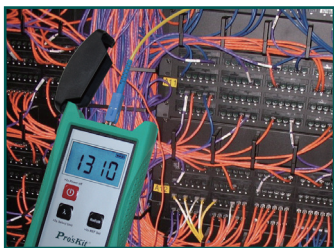
# MT-7601

## FIBER OPTIC POWER METER



An essential fiber test instrument used for absolute optical power measurement as well as fiber optic relative loss measurement. Easy to use for Datacom, Telecommunication networks & FTTx applications.

**Wide range of Power measurement : 850nm-1625nm**



- Fiber optic power test
- Compatible connectors (LC with optional adaptor)



### Free from any complicated transformation

Adapts to FC/SC/ST connectors

### Energy saving

Automatically auto power off after 10min of no operation.

### Multi wavelength measurement

850nm/1300nm/1310nm/1490nm/1550nm/1625nm

### Supports night operation

Comfortable LCD backlight display

### New REF user-defined

Can store the current laser source as a new reference value

### Well protected and portable design

Additional shock-proof cover & pouch bag



Model Number	MT-7601
Detector Type	InGaAs
Optical Connector	FC/SC/ST& 2.5mm Universal
Calibrated Wavelengths	850、1300、1310、1490、1550、1625
Measurement Range	+6 ~ -70 dBm
Accuracy	± 0.2 dB
Power Measurement Linearity	±2.0%
Display Resolution	+6 ~ -60dBm : 0.01 dB, -60 ~ -70dBm : 0.1 dB
Power Display Units	dBm、mW、μW、nW
Reference comparison value	Yes
Modulation Detection	270Hz、1KHz、2KHz (850、1300、1310、1490、1550、1625)
Operation voice prompts	Yes
Backlight	Yes
Automatic Power Off	10 min.(Can be cancelled)
Low Battery Warning	Low battery energy
Body protection	Yes
Battery Life	> 160 hours
Operating Temperature	-10 ~ +60 °C , < 90%
Storage Temperature	-20 ~ +70°C , < 90%
Power source	AA/LR6 1.5V×2 pcs
Size	165×80×35 mm
Weight	180g (w/o battery)
Optional Accessory	LC adaptor (5MT-7601-LC)

Picture for reference only. Please check with distributor for exact offers. All specifications are subject to change without notice.