



TOOL CASES



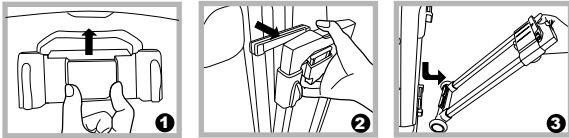
900-262

Heavy-Duty ABS Case With Wheels And Telescoping Handle

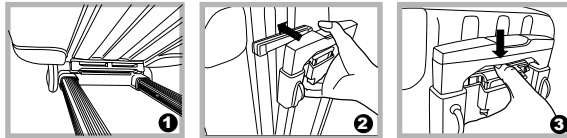
- Heavy-duty black scuff resistant molded ABS thermoplastic forms the tough shell of this case.
- Extruded aluminum rim, drawbolt key locks and strong molded handle.
- Locking telescoping handle extends to 1000mm.
- Loading capacity: 12kg
- Rotationally molded heavy-duty polyethylene shell.
- Not designed to be checked as airline baggage.
- Individual Packing : Color box



Disassemble



Assemble



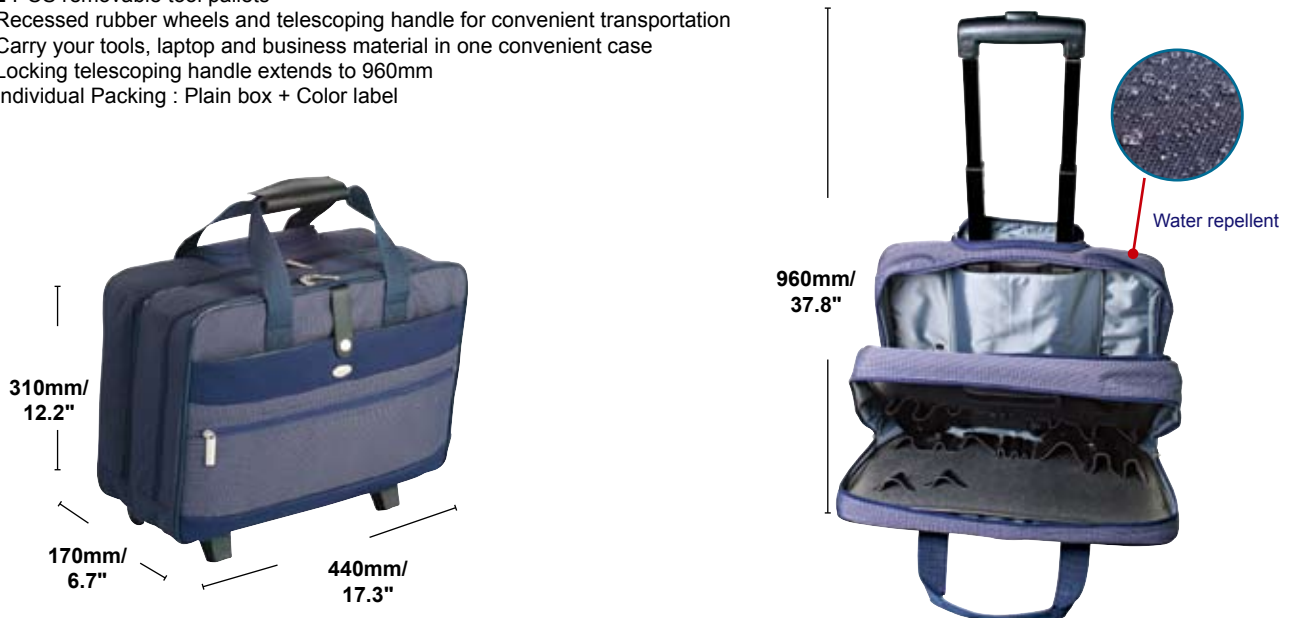
The loading capacity of this tool case is 12kg maximum.



900-261

Multi-Purpose Tool Case With Wheels And Telescoping Handle

- Material: 600D polyester with water repellent treatment
- Multi function bag with 4 inner layers, ideal for storing tools, books, personal computers etc
- 2 PCS removable tool pallets
- Recessed rubber wheels and telescoping handle for convenient transportation
- Carry your tools, laptop and business material in one convenient case
- Locking telescoping handle extends to 960mm
- Individual Packing : Plain box + Color label



ESD STATIC PROTECTION

MAGNIFICATION/LIGHTING

FIBER OPTICS

POWER TOOLS

INSTRUMENT CASE

MISCELLANEOUS

LAN/DATACOMM

CONNECTORS

WIRING INSTALLATION

TOOL CASES

TOOL KITS

▶ TC-765 Aluminum Frame Drawer Case

New

- Made of ABS plastic for strength and durability.
- Sturdy aluminum frame construction.
- Foam padding on lid provides better tool protection.
- The drawer locks automatically when lid is closed to prevent slide out for easy mobility.
- Ball-bearing slides make drawer easy to open and close tightly.
- Non-slip lining helps you to keep tools in place.



Heavy duty lockable latches Ball-bearing slides make drawer easy to open and close tightly. Cushioned carrying handle Plastic protective corner



Drawer auto-locking design when lid is closed to prevent slide out for easy mobility.



▶ 900-199 ABS Carrying Tool Case W/1 Pallet

Attractive and functional multipurpose cases

- Material: ABS
- Functional for both personal and professional business
- Complete with one tool pallet and interior dividers
- Both the tool pallet and dividers are removable



Latch lock Durable handle Injection molding tool case stands. Aluminum corner frames to protect tools.

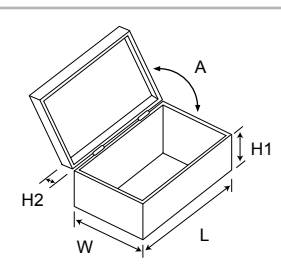


▶ 900-141 ABS Carrying Tool Case W/2 Pallets

- Material: ABS for case, durable silver aluminum for frame



Stylish draw bolt key locks Removable rugged pallet. With shoulder strap for convenient transportation Deluxe die-cast chrome golf grip handle



Model No.	Size	L (mm/inch)	W (mm/inch)	H1 (mm/inch)	H2 (mm/inch)	A	Individual packing
TC-765	O.D	430/16.9	300/11.8	163/6.4	57/2.2	90°	Color box
	I.D	410/16.1	280/11.0	70/2.8	49/1.9		
	I.D(Drawer)	337/13.3	255/10.0	40/1.6	-		
900-199	O.D	463/18.2	331/13.0	96/3.8	75/3.0	98°	Color box
	I.D	453/17.8	323/12.7	90/3.5	67/2.6		
900-141	O.D	435/17.1	310/12.2	83/3.3	70/2.8	105°	Color box
	I.D	420/16.5	293/11.5	76/3.0	59/2.3		

▶ 900-048 Aluminum Frame Tool Case W/1 Pallet

- Material: Aluminum (frame)



Reinforced construction
3 hinges and corner protector.



Removeable
rugged pallet.



Key lock



EVA

▶ 900-011 Aluminum Frame Tool Case W/1 Pallet

- Material: Aluminum (frame)



Removeable
rugged pallet.



Key lock

8 Brackets
(Corner protector)

4 Brackets
(Reinforced construction)



EVA

▶ 900-203 Aluminum Frame Tool Case

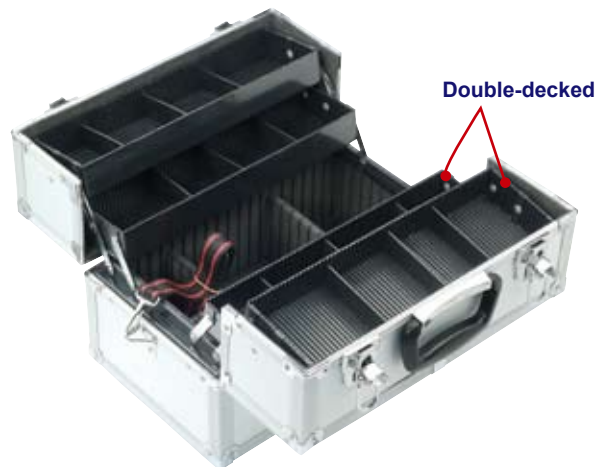
- Material: Aluminum (frame)

4 Brackets
(Reinforced construction)

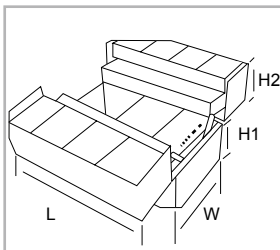
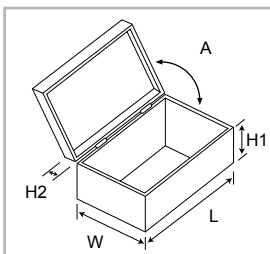
Key lock



8 Brackets
(Corner protector)



Double-decked



Model No.	Size	L (mm/inch)	W (mm/inch)	H1 (mm/inch)	H2 (mm/inch)	A	Second Pallet	Individual packing
900-048	O.D	458/18.0	330/13.0	90/3.5	60/2.4	97°	900-045	Plain box + Color label
	I.D	434/17.1	308/12.1	82/3.2	53/2.1			
900-011	O.D	458/18.0	330/13.0	101/4.0	49/1.9	97°	900-045	Color box
	I.D	438/17.2	312/12.3	95/3.7	41/1.6			
900-203	O.D	360/14.2	220/8.7	120/4.7	110/4.3	-	-	Plain box + Color label
	I.D	335/13.2	200/7.9	110/4.3	85/3.3			

900-054 2 In 1 Zipper Bag W/2 Pallet



• Material: PVC leather



Separate compartments provide multi-function for tool kit and document storage



900-052 Heavy Duty Zipper Bag



• Material: PVC leather

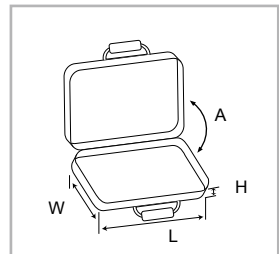
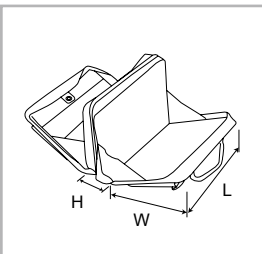


900-225 Blow Molded Case With Pre-Cut Soft Foam

• Material: H.D.P.E



Demo only



Model No.	L (mm/inch)	W (mm/inch)	H (mm/inch)	A	Individual packing
900-054	400/15.7	395/15.6	120/4.7	-	Poly bag
900-052	435/17.1	325/12.8	90/3.5	93°	Color box
900-225	442/17.4	279/11.0	89/3.5	-	Color Label

**902-118****Zipper Bag W/2 Pallets**

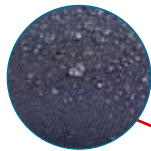
Demo only

**902-119****Tool Bag**

- Intensive structure for strap, zipper and handle designed to enhance the durability.
- High capacity and affordable price make it the best match for students.



Demo only



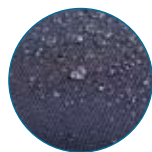
Water repellent

**900-260****Tool Bag**

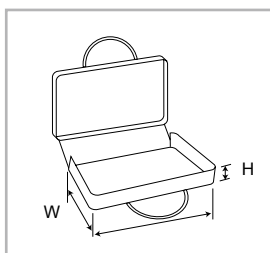
- Multi function bag with 4 inner layers ideal for storing tools, books, mobile computers, clothes, etc.
- Intensive structure for strap, zipper and handle designed to enhance the durability.



Demo only



Water repellent



Model No.	Material	L (mm/inch)	W (mm/inch)	H (mm/inch)	Individual packing
902-118	600D polyester	390/15.4	280/11.0	70/2.8	Color box
902-119	600D polyester	360/14.2	260/10.2	87/3.4	Poly bag
900-260	600D polyester	400/15.7	275/10.8	90/3.5	Poly bag

▶ 900-106 Deluxe Portable Tool Bag



- Material: 600D Polyester
- Ruggedly constructed with heavy duty zipper and sturdy padded handles, hard bottom to keep shape and large opening interior.
- Designed to provide multi-function and flexible adjustment space.
- 12 pocket holes for versatility



Demo only



▶ MTB-1 Mechanic's Tool Bag



Demo only

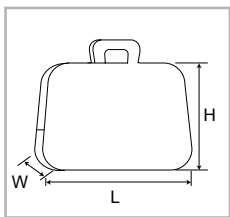
- Material: 600D Polyester
- Rugged construction
- Heavy-duty zipper
- Sturdy padded handles
- Hard bottom to maintain shape
- Soft sides to allow flexibility
- 13 pocket holes for versatility



▶ 9ST-902



Demo only



▶ Case001



Demo only



Model No.	Material	L (mm/inch)	W (mm/inch)	H (mm/inch)	Individual packing
900-106	600D Polyester	390/15.4	250/9.8	245/9.6	Poly bag
MTB-1	600D Polyester	305/12.0	152/6.0	165/6.5	Poly bag
9ST-902	PVC leather	260/10.24	170/6.69	38/1.5	Poly bag
Case001	600D Polyester	305/12.0	255/10.0	75/3	Poly bag

▶ 902-254 Black Tool Pouch

- Large capacity, general purpose pouch with Tape Measure clip, Butt-Set hook, and Tape Roll holder.
- Made from durable fabric.



Demo only



▶ 900-246 Soft Sided Tool Pouch



Demo only
Dual purpose belt for easy carrying on shoulder or waist

- Keep your tools and supplies handy.
- Made from strong durable fabric.
- complete with universal tool belt system.



Model No.	Size	L (mm/inch)	W (mm/inch)	H (mm/inch)	Individual packing
902-254	O.D	350/13.8	240/9.5	-	Poly bag + Color label
900-246	O.D	305/12.0	235/9.3	95/3.7	Poly bag + Hanger

902-314 25 Pocket Electrical & Maintenance Tool Carrier



Demo only



Square design enables firmly standing

- Made of 600D polyester
- With a padded carrying handle
- With multi-pocket for versatility
- A space in the bottom for storage box
- Size: 216x216x406mm/8.5"x8.5"x16"

- Individual packing: Poly bag+Hanger

16"



8.5"

8.5"

902-311 Master Tool Belt

- Made of 600D polyester
- Leather waist belt with 13 adjustment holes (from 32" to 44")
- With roller metal double-tongue buckle
- With multi-pocket for versatility
- Size: 356x330mm/14.0"x13.0" (Individual bag size)
- Individual packing: Poly bag+Hanger



Demo only



902-312 4 Pocket Pouch

- Made of 600D polyester
- 3 mesh pockets for light tools
- Ideal for packing pliers with a padded & reinforced pouch design
- Size: 229x102mm/9.4"x4.0"
- Individual packing: Poly bag+Hanger



Demo only



ST-5203 Power Tool Holster



Demo only



New



Water repellent

PATENTED Product

PATENT NO. M285261

ST-5601 Magnetic Wrist Band



Demo only

Powerful magnet lifts: 1kg

New



Water repellent



Model No.	Material	Loading capacity	Dimension (mm/inch)	Individual packing
ST-5203	600DX600D Polyester	3kg	280x180x50/11.0x7.1x2.0	Poly bag+Hanger
ST-5601	600DX600D Polyester	-	Width: 5cm / Length: 30cm (Width: 2.0" / Length: 11.8")	Poly bag+Hanger