

home



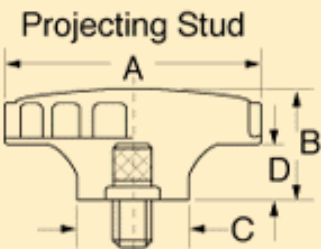
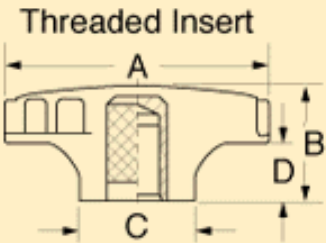
SURE GRIP

**PHENOLIC**

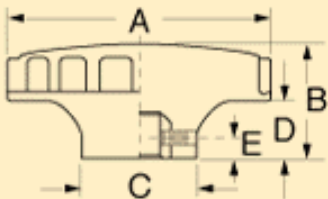
**Material-** Phenolic  
**Insert-** Brass

**BB-** Brass Bushing  
**PH-** Plain Hole

**Projecting Stud-** Steel, zinc plated  
† **Insert-** Steel, zinc plated  
†† **Projecting Stud-** Stainless steel



**Plain Hole or Brass Bushing w/Set Screw**



**Threaded Insert**

Part No.	Insert	
	Thread	Depth
<a href="#">2965-H</a>	8-32	1/4
<a href="#">2965BW</a>	10-32	5/16
<a href="#">2965HW<sup>1</sup></a>	1/4-20	3/8

1 "B" = 5/8, "D" = 1/4  
2 "B" = 1, "D" = 5/8

**Projecting Stud**

Part No.	Stud		Max Length
	Thread	Length	
<a href="#">2965EQ<sup>3</sup></a>	10-32	3/4	3
<a href="#">2965FC</a>	10-32	3/8	3
<a href="#">2965FH</a>	10-32	1/2	3
<a href="#">2965FJ</a>	1/4-20	9/16	3
<a href="#">2965GQ</a>	10-24	1/2	3
<a href="#">2965KJ<sup>4++</sup></a>	1/4-20	1	3

3 "B" = 3/4, "D" = 3/8, 5 "B" = 1, "D" = 5/8  
4 "B" = 5/8, "D" = 1/4, 6 "B" = 1-1/4, "D" = 19/32

**Hole or Bushing w/ Set Screw**

Part	Hole		

No.	Dia.	Type	SS	"E"
<a href="#">2965</a>	1/4	Plain Hole	8-32	17/64

[« back](#)