

home



MINIATURE CLAMP

Material- Call for material specifications
Insert- Brass

Projecting Stud- Steel, zinc plated
 † Projecting Stud- Stainless steel



1770



2700



2710



7094



2720



2700



7094



7094 (No hub)



2715



2720



2730

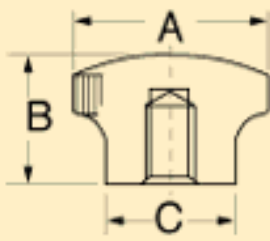
Threaded Insert

Part No.	Insert	
	Thread	Depth
2720-A	10-24	5/16
2720-Q	8-32	1/4
2720	10-32	5/16
1 "B" = 1/2, "D" = 21/64		

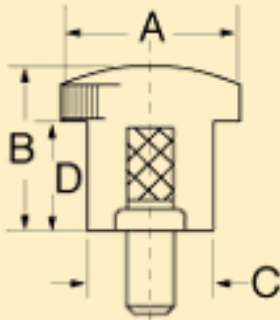
Projecting Stud

Part No.	Stud	Max Length

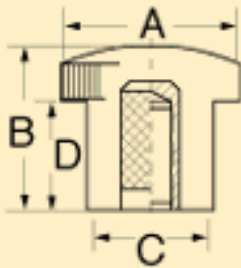
Molded Thread



Projecting Stud



Threaded Insert



	Thread	Length	
2720-L	8-32	3/8	1-1/2
*Molded plain hole for 1/4" Allen head cap screw press fit 1 "B" = 1/2, "D" = 21/64			

[« back](#)