

Crydom

OBRU-12D

See full Datasheet below...

onlinecomponents.com

THE ONLINE DISTRIBUTOR OF ELECTRONIC COMPONENTS

BUY NOW



MASTERTM
ELECTRONICS

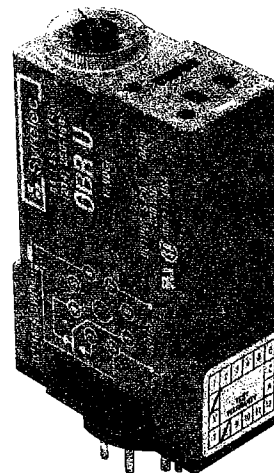
BUY NOW

masterelectronics.com & onlinecomponents.com
are **authorized** e-commerce distributors
of electronic components.

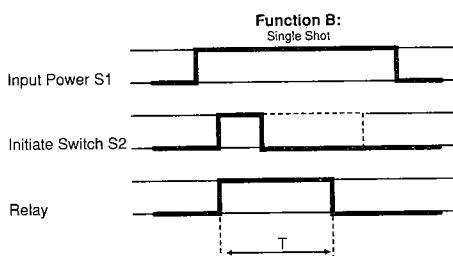
BR U SERIES SINGLE SHOT TIMER

UL-E87133 CSA-LR56339

- Multi Timing Range (.1 sec to 10 hours)
- Direct Reading
- Dual Voltage
- SPDT 10 Amp Output
- LED Power ON Indicator
- LED RELAY Indicator

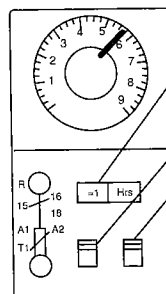


TIMERS



Function B: Input power (S1) is continuously supplied to the timer. When an external initiate switch (S2) is closed, momentarily or maintained, the output relay is energized. At the end of the delay time (T), the output is de-energized. The timer is ready for another cycle. Isolate the initiate switch (S2) from other circuits.

TIMING RANGE SELECTION:



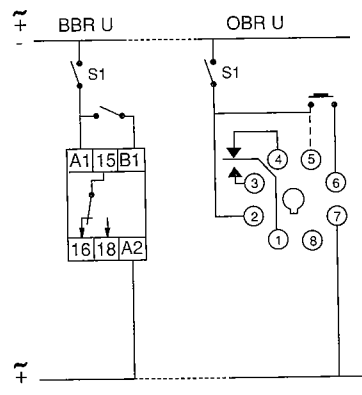
Six Time Ranges can be selected with two front panel switches.

- X 0.1 s — 0.1 to 1 second
- X 1 s — 1 to 10 seconds
- X 0.1 mn — 0.1 to 1 minute
- X 1 mn — 1 to 10 minutes
- X 0.1 hrs — 0.1 to 1 hour
- X 1 hrs — 1 to 10 hours

SPECIFICATIONS:

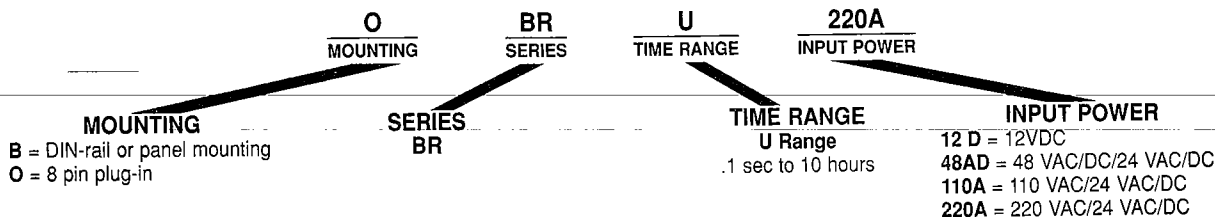
Input Power	220 VAC/24 VAC/DC, 110VAC/24VAC/DC	
	48 VAC/DC/24VAC/DC, 12VDC±15%, 50/60 Hz	
Max. power consumption	24 VAC: 1VA	12 VDC: 0.5W
	48 VAC: 1.2VA	24 VDC: 0.6W
	110 VAC: 3.5VA	48 VDC: 1.2W
	220 VAC: 7VA	
Output Rating	SPDT Relay	
Contact material	Ag Cdo	
Maximum loading	10A AC resistive	8A DC resistive
Maximum switching voltage ...	250 VAC	250 VDC
Relay maximum power rating .	2200 VA	80W
Transient protection	2500 volts	
Mechanical life of relay	30 x 10 ⁵ operations	
Electrical life of relay	2 x 10 ⁵ at 2400 VA resistive load	
Repetition accuracy	± 0.2% at a constant ambient	
Reset time	50 ms after timing	
	100ms during timing	
Contact Closure Time	20 ms minimum	
Operating temperature	-4°F to + 140°F	-20°C to +60°C
Weight	2.8 oz. (80 grams)	

WIRING DIAGRAM:



The initial switch should be isolated from the other circuits. Contact will operate on the same supply as the timer and will have a max load of 5ma.
For 24VAC/DC, select switch on the side of the unit.

ORDERING INFORMATION:



For Assistance Call 1 (800) 677-5311