

Crydom

See full Datasheet below...

onlinecomponents.com
THE ONLINE DISTRIBUTOR OF ELECTRONIC COMPONENTS

BUY NOW

 **MASTER**TM
E L E C T R O N I C S

BUY NOW

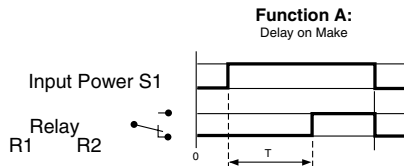
masterelectronics.com & onlinecomponents.com
are **authorized** e-commerce distributors
of electronic components.

AXR2 SERIES

DELAY ON MAKE TIMER

UL listed CSA recognized

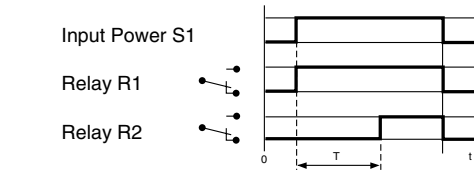
- **DIN-Sized (48 x 48mm) Housing**
- **2 Delayed SPDT or 1 Delayed SPDT and 1 instantaneous SPDT**
- **Multi-timing Range (.1 sec to 10 hours in one unit)**
- **LED Power ON**
- **LED Relay Indicator**



When input power (S1) is applied, the relay delays the preset time (T) period prior to energizing. Interrupt power to de-energize the relay. Timer is supplied with a red LED relay status indicator.

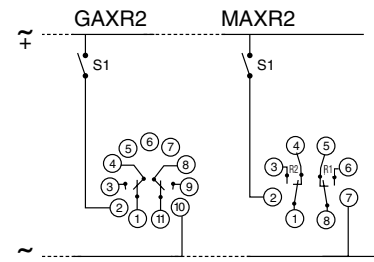
SPECIFICATIONS:

Input Power	12 VDC, 24 VAC-DC, 48 VAC-DC, 24 VAC-DC/110 VAC, 24 VAC-DC/220-240 VAC ±15%, 50/60 Hz
Power consumption	24 VAC: 1.0 VA 12 VDC: 0.5 W 48 VAC: 1.2 VA 24 VDC: 0.6 W 110 VAC: 3.5 VA 48 VDC: 1.2 W 220 VAC: 7.0 VA
Output Rating	2 x SPDT Relay
Contact material	AgCdO
Maximum loading	10 Amp 8A DC
Maximum switching voltage	250 VAC 250 VDC
Relay max. power rating	1250 VA 80W
Transient protection	2500 volts
Electrical life of relay	10 ⁵ operations at 1250 VA resistive load
Mechanical life of relay	5 x 10 ⁷ operations ±3% with temp. variation
Repetition accuracy	±0.5% at a constant ambient
Reset time	50 ms after timing 100 ms during timing
Operating temperature	+14°F to +140°F -10°C to +60°C
Humidity	85% non-condensing
Weight	3.5 oz. (100g)



When input power (S1) is applied, relay R1 energizes immediately. Relay R2 energizes after the delay period selected. interrupt input power to repeat the cycle.

WIRING DIAGRAM:

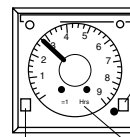


The AXR2 Series is dual voltage timer, Jumper terminals 10 to 7 (GAXR2) when using 24VAC/DC input power-MAXR2 is single voltage.

TIMING RANGE SELECTION:

Time Base Selection Switch :Hour, Minute, Second

Six Time Ranges can be selected with two front panel switches.



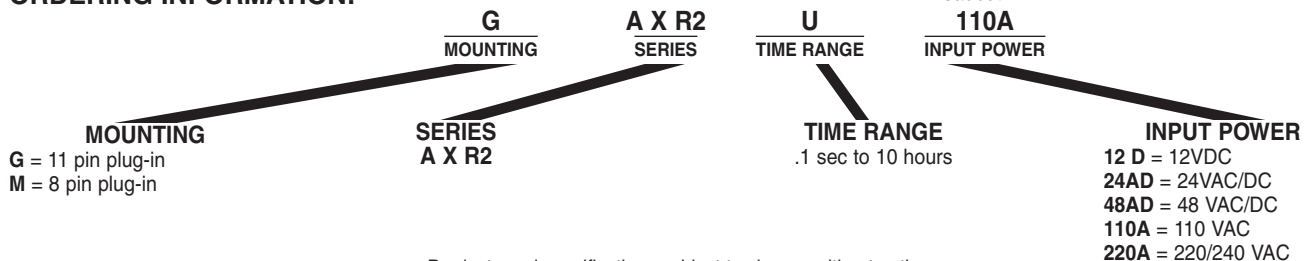
Scale Selection Switch: x1, x0.1

Time Base Readout

Six Time Range can be selected with two front panel switches.

- X 0.1 s — 0.1 to 1 second
- X 1 s — 1 to 10 seconds
- X 0.1 mn — 0.1 to 1 minute
- X 1 mn — 1 to 10 minutes
- X 0.1 hrs — 0.1 to 1 hour
- X 1 hrs — 1 to 10 hours

ORDERING INFORMATION:



Products and specifications subject to change without notice. Consult factory for application assistance.