

Crydom

See full Datasheet below...

onlinecomponents.com
THE ONLINE DISTRIBUTOR OF ELECTRONIC COMPONENTS

BUY NOW

 **MASTER**TM
E L E C T R O N I C S

BUY NOW

masterelectronics.com & onlinecomponents.com
are **authorized** e-commerce distributors
of electronic components.



Installation Sheet

DRA Series Contactors 3 Phase AC Contactors & AC Motor Reversing Contactors

DRA series Solid State Contactors offer the advantages of Crydom's proven state-of-the-art solid state AC switching technology in a ready-to-use contactor which requires no additional heat sinking. DRA series contactors include a protective Forward/Reverse interlock for motor reversing and are ideal for applications up to 2 Horse Power. For complete specifications, see DRA Series AC 3 Phase Contactors & DRA AC Motor Reversing Contactors datasheets at www.crydom.com.

FEATURES

- 45 mm wide 3 phase & 62 mm wide motor reversing DIN rail mountable versions available
- 480 VAC Operating Voltage
- 5 VDC, 24 VDC, 48 VAC, 120 VAC & 230 VAC Input Control Voltage options available
- Protective Forward/Reverse interlock built-in function for motor reversing
- UL and IEC Resistive & Motor Ratings available
- LED Status indicator for Input Control Voltage

INSTALLATION INSTRUCTIONS

Please read all installation instructions before using DRA Series 3 phase / Reversing Contactors.

- Install the contactor on the DIN rail as shown in fig. 1. Vertical mounting operation is recommended.
- Wire the contactor to the input control side following the corresponding wiring diagram (fig. 3 or fig. 4). 24 AWG minimum, 12 AWG maximum (IEC 0.5-2.5 mm²). Maximum recommended terminal screw torque input 4.3 lbs in (0.5 Nm).
- Wire the contactor to the AC Line side (L1, L2 & L3) and to the Load side (T1, T2 & T3). 24 AWG minimum, 10 AWG maximum (IEC 0.5-4.0 mm²). Maximum recommended terminal screw torque output 12.0 lbs in (1.37 Nm).
- If multiple units are installed be sure to follow derating curve (fig. 2).

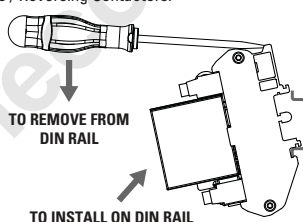


fig. 1 Mounting/Dismounting contactor on DIN rail.

PART NUMBER NOMENCLATURE

Series	Rated Operating Voltage	Operational Current		
DRA	48: 480 VAC	2: 2.4 Amps Resistive/1 HP @ 480 VAC	4: 4.2 Amps Resistive/2 HP @ 480 VAC	
3P	Function	Control Voltage	Switching Mode (3P Only)	
48	3P: 3 Phase 3R: 3 Phase Reversing	A: 230 VAC B: 120 VAC C: 48 VAC D: 5 VDC E: 24 VDC	Blank: Zero Voltage Turn-On R: Random Turn-On	

● Required for valid part number
● For options only and not required for valid part number

DERATING CURVE (A)

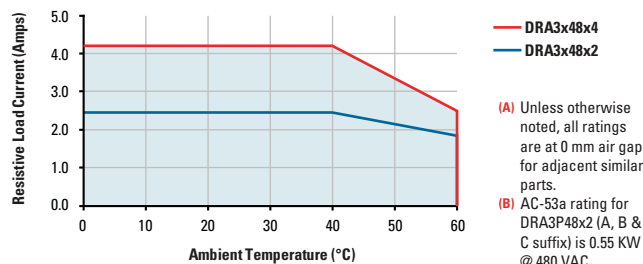


fig. 2 Derating Curve for 3 Phase & Motor Reversing contactor.

Temp.	DRA3P48x2	DRA3P48x4	DRA3R48x2	DRA3R48x4
40°C	1 HP (0.75 KW) (B)	2 HP (0.75 KW)	1 HP (0.75 KW)	2 HP (1.5 KW)
60°C	¾ HP (0.55 KW)	1 HP (0.37 KW)	¾ HP (0.55 KW)	1 HP (0.75 KW)

Rev: 032811

crydom

Installation Sheet

DRA3P48xx

Wiring Diagram (C, D)

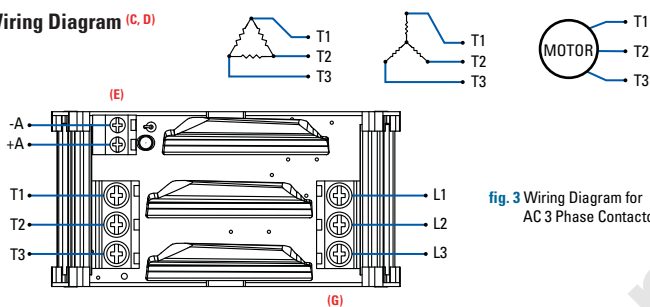


fig. 3 Wiring Diagram for AC 3 Phase Contactor.

- (C) No grounding wire required
- (D) Minimum wire strip length 0.197 in [5 mm], maximum 0.235 in [6 mm] for input terminals. Minimum wire strip length 0.315 in [8 mm], maximum 0.354 in [9 mm] for output terminals
- (E) 2 Input control terminal screws M2.5 Combo Drive
- (F) 3 Input control terminal screws M2.5 Slotted Drive
- (G) 6 Output terminal screws (L1, L2 & L3 / T1, T2 & T3) M3.5 Combo Drive

WARNING

RISK OF MATERIAL DAMAGE AND HOT ENCLOSURE

- The product's side panels may be hot, allow the product to cool before touching.
- Follow proper mounting instructions including torque values.
- Do not allow liquids or foreign objects to enter this product.

Failure to follow these instructions can result in serious injury, or equipment damage.

DANGER

HAZARD OF ELECTRIC SHOCK, EXPLOSION OR ARC FLASH

- Turn off power supply before working on this equipment.

Failure to follow these instructions will result in death or serious injury.

DRA3R48xx

Wiring Diagram (C, D)

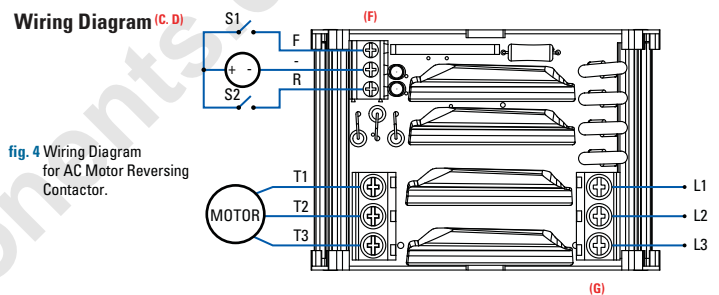
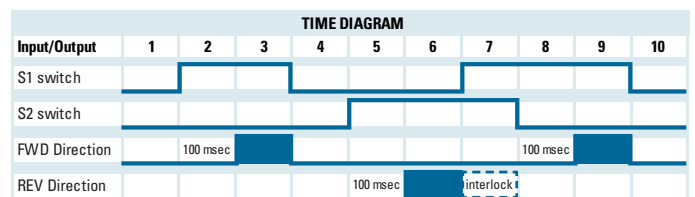


fig. 4 Wiring Diagram for AC Motor Reversing Contactor.

S1	S2	Forward	Reverse
Open	Open	Off	Off
Close	Open	On	Off
Open	Close	Off	On
Close	Close	Off	Off



Rev: 032811

Do not forget to visit us at: www.crydom.com

Copyright © 2011 Crydom Inc. Specifications subject to change without notice.