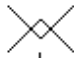




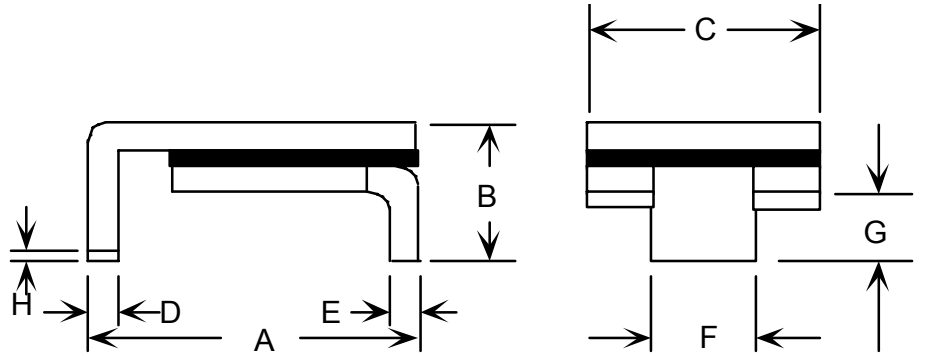
Specification Status: Released

Maximum Electrical Ratings

Operating Voltage / Interrupt Current
30V_{DC} / 40A
12V_{DC} / 60A
5V_{DC} / 125A

Marking:

 **075F** – Part Identification
 Manufacturer's Mark
 – Lot Identification



Notes:

1. All metal surfaces are tin plated.
2. Devices cannot be wave soldered.
3. Drawing not to scale.

TABLE I. DIMENSIONS:

| | A | | B | | C | | D | | E | | F | | G | | H |
|------|---------|---------|-----|---------|--------|---------|---------|---------|---------|---------|---------|---------|---------|---------|---------|
| | MIN | MAX | MIN | MAX | MIN | MAX | MIN | MAX | MIN | MAX | MIN | MAX | MIN | MAX | MIN |
| mm: | 6.73 | 7.98 | -- | 3.18 | 4.8 | 5.44 | 0.56 | 0.71 | 0.56 | 0.71 | 2.16 | 2.41 | 0.66 | 1.37 | 0.43 |
| in*: | (0.265) | (0.314) | -- | (0.125) | (0.19) | (0.214) | (0.022) | (0.028) | (0.022) | (0.028) | (0.085) | (0.095) | (0.026) | (0.054) | (0.017) |

TABLE II. PERFORMANCE RATINGS:

| CURRENT RATINGS** | | | | | | TIME TO TRIP** | RESISTANCE VALUES | | TRIPPED-STATE POWER DISSIPATION** |
|-------------------|------|--------------|------|--------------|------|---------------------------|-------------------|------|-----------------------------------|
| AMPS AT 0°C | | AMPS AT 20°C | | AMPS AT 60°C | | SECONDS AT 25°C, 3.0A MAX | OHMS AT 25°C | | WATTS AT 25°C TYP. |
| HOLD | TRIP | HOLD | TRIP | HOLD | TRIP | | MIN | MAX* | |
| 0.71 | 1.75 | 0.60 | 1.48 | 0.40 | 0.99 | 20 | 0.29 | 1.00 | 1.1 |

* Maximum resistance is measured both 1 hour post reflow and 1 hour post trip.
** Values specified were determined using PCB's with 0.070"X1.5 ounce copper traces.

Reference Documents: PS300, PS400
Precedence: This specification takes precedence over documents referenced herein.
Effectivity: Reference documents shall be the issue in effect on the date of invitation for bid.
CAUTION: Operation beyond the rated voltage or current may result in rupture, electrical arcing or flame.

Materials Information

ROHS Compliant

ELV Compliant

Pb-Free

Halogen Free*

Directive 2002/95/EC Compliant

Directive 2000/53/EC Compliant



* Halogen Free refers to: Br≤900ppm, Cl≤900ppm, Br+Cl≤1500ppm

SUPERSEDED
NOT the LATEST
REVISION