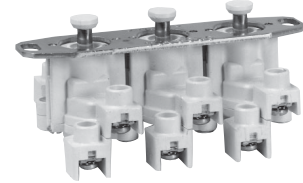
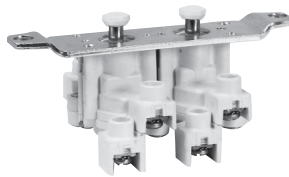
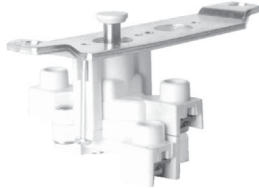


Replacements for Pushbutton and Selector Switch Control Stations

600 VAC Heavy Duty

ED Series Pushbutton Contacts (for control stations built in 1996 or earlier)

Complete with Mounting Strap and Hardware



1 Circuit Universal	2 Circuits Universal	2 Circuits 1 Open - A 1 Closed - B	3 Circuits Universal
Cat. #	Cat. #	Cat. #	
ED11	ED12†	ED12†	-
ED21	ED22†	ED22†	-
-	ED32†	ED32†	-
ED38	ED35	-	-
-	-	-	ED13

Where Used

MC pushbutton stations and selector switches
 OAC pushbutton stations and selector switches
 EWC pushbutton stations
 EMP selector switches
 DSD962 pushbutton cover

FlexStation Series Pushbutton Contacts (for control stations built in 1997 or later)

Contact Block without Mounting Strap



1 Circuit Universal	2 Circuits Universal	2 Circuits 1 Open - A 1 Closed - B	3 Circuits Universal
Cat. #	Cat. #	Cat. #	
ESWP126	ESWP126 (2)	ESWP126 (2)	-
-	-	-	ESWP126 (3)

Where Used

EDS and EFS pushbutton stations and selector switches
 DSD962 pushbutton cover

Contact Ratings

Volts	Max. Current (Amperes)		Voltamperes		Continuous Current (Amperes)
	Make	Break	Make	Break	
600 VAC Heavy Duty (NEMA A600)					
120	60	6.0	7200	720	10
240	30	3.0	7200	720	10
480	15	1.5	7200	720	10
600	12	1.2	7200	720	10
Direct Current (NEMA P150)					
125	1.1	1.1	138	138	5

External Operating Buttons



CF859



CF705

Where Used	Colors Available	Cat. #
MC, EFS, and EFD – current design with nylon guards	Red, Green, Black	CF859 K1 ①
EMPS019, EMP019, EMPS029 and EMP029 – single operator FS, EFS, and EFD – previous design with aluminum guards	Red, Green, Black	CF705-K1 ①

① If desired, markings on indicating plates may be added to catalog number. Select from the list of standard markings below:

START	OFF	RESET	LIGHT ON
STOP	RUN	TRIP	HAND
ON	JOG	TEST	AUTOMATIC

EMERGENCY FORWARD REVERSE	OPEN CLOSE UP	DOWN IN OUT	RAISE LOWER
---------------------------	---------------	-------------	-------------

Note: CF859-K1 and CF705-K1 come with 5 buttons.
 † Two universal contact blocks, must be wired as two circuits, with one normally open and one normally closed.
 ‡ Use CF705-K1 for DEV11 and DEV12. To order DL legend plates see page 516 for markings.

