

HARDWARE

BUTTON HEAD HEX-SOCKET CAP SCREW

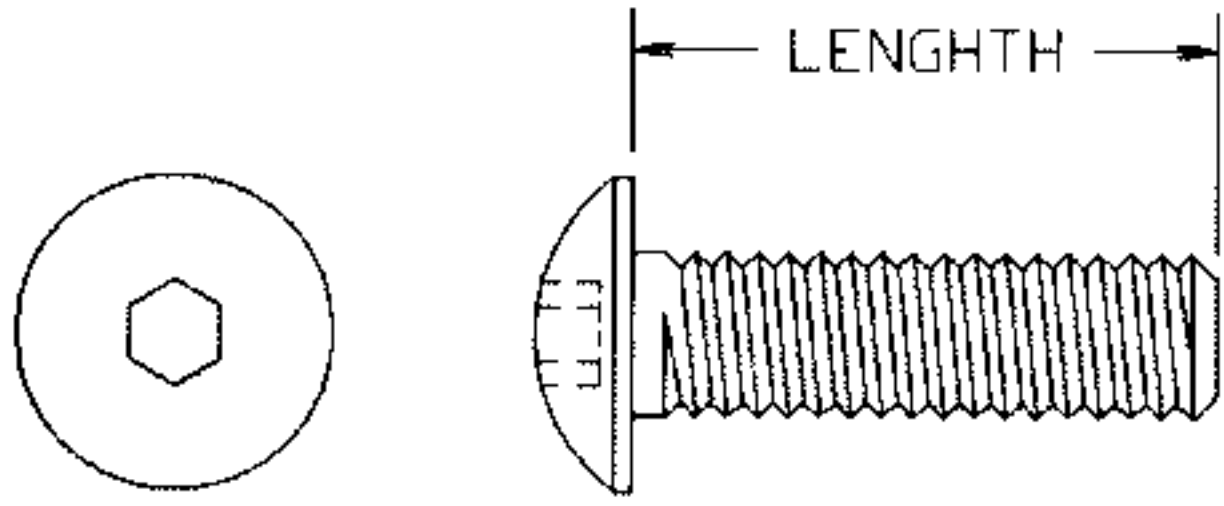


FIG.1

FLAT HEAD HEX-SOCKET CAP SCREW

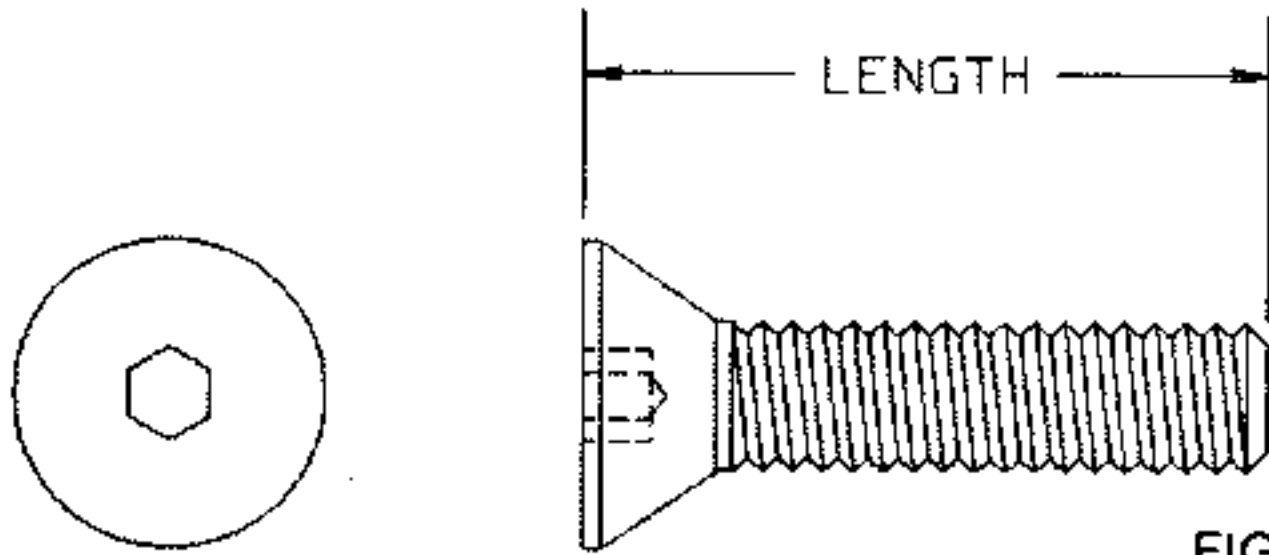
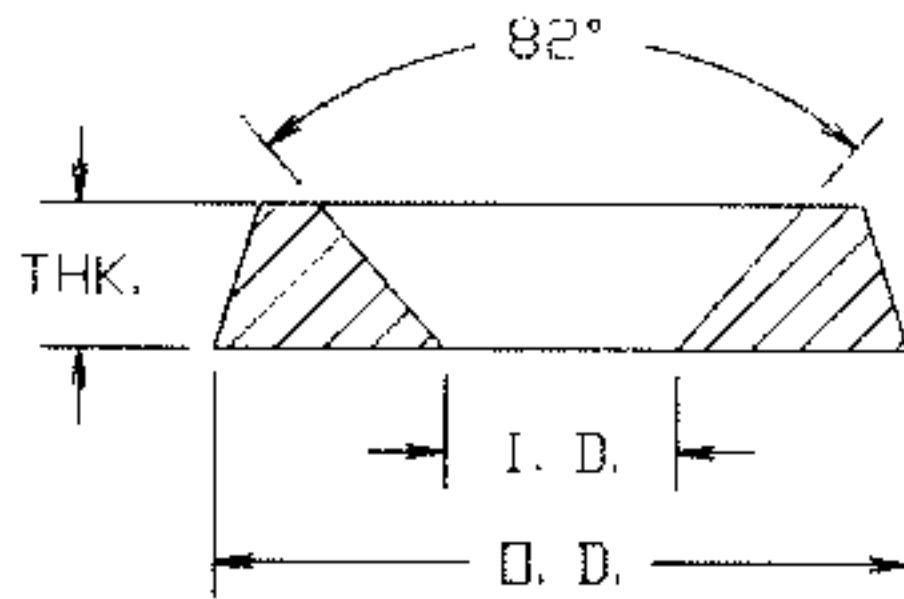


FIG.2

(BUTTON HEAD) STAINLESS STEEL PER ASTM F837	(BUTTON HEAD) STEEL PER ASTM A574 (BLACK)	(FLAT HEAD) STAINLESS STEEL PER ASTM F837	(FLAT HEAD) STEEL PER ASTM A574 (BLACK)	THD X LENGTH
FIG.1	FIG.1	FIG.2	FIG.2	
701-7801	701-7826	701-7851	701-7876	4-40 X 1/4
701-7802	701-7827	701-7852	701-7877	4-40 X 3/8
701-7803	701-7828	701-7853	701-7878	4-40 X 1/2
701-7804	701-7829	701-7854	701-7879	4-40 X 3/4
701-7805	701-7830	701-7855	701-7880	6-32 X 1/4
701-7806	701-7831	701-7856	701-7881	6-32 X 3/8
701-7807	701-7832	701-7857	701-7882	6-32 X 1/2
701-7808	701-7833	701-7858	701-7883	6-32 X 5/8
701-7809		701-7859	701-7884	6-32 X 7/8
701-7810	701-7835	701-7860	701-7885	6-32 X 1
701-7811	701-7836	701-7861	701-7886	8-32 X 3/8
701-7812	701-7837	701-7862	701-7887	8-32 X 1/2
701-7813	701-7838	701-7863	701-7888	8-32 X 5/8
701-7814	701-7839	701-7864	701-7889	8-32 X 3/4
701-7815	701-7840	701-7865	701-7890	8-32 X 1
701-7816	701-7841	701-7866	701-7891	8-32 X 1-1/2
701-7817	701-7842	701-7867	701-7892	10-32 X 1/2
701-7818	701-7843	701-7868	701-7893	10-32 X 3/4
701-7819	701-7844	701-7869	701-7894	10-32 X 1
701-7820	701-7845	701-7870	701-7895	10-32 X 1-1/2
701-7821	701-7846	701-7871	701-7896	10-32 X 2

NYLON COUNTERSUNK FINISHING WASHERS



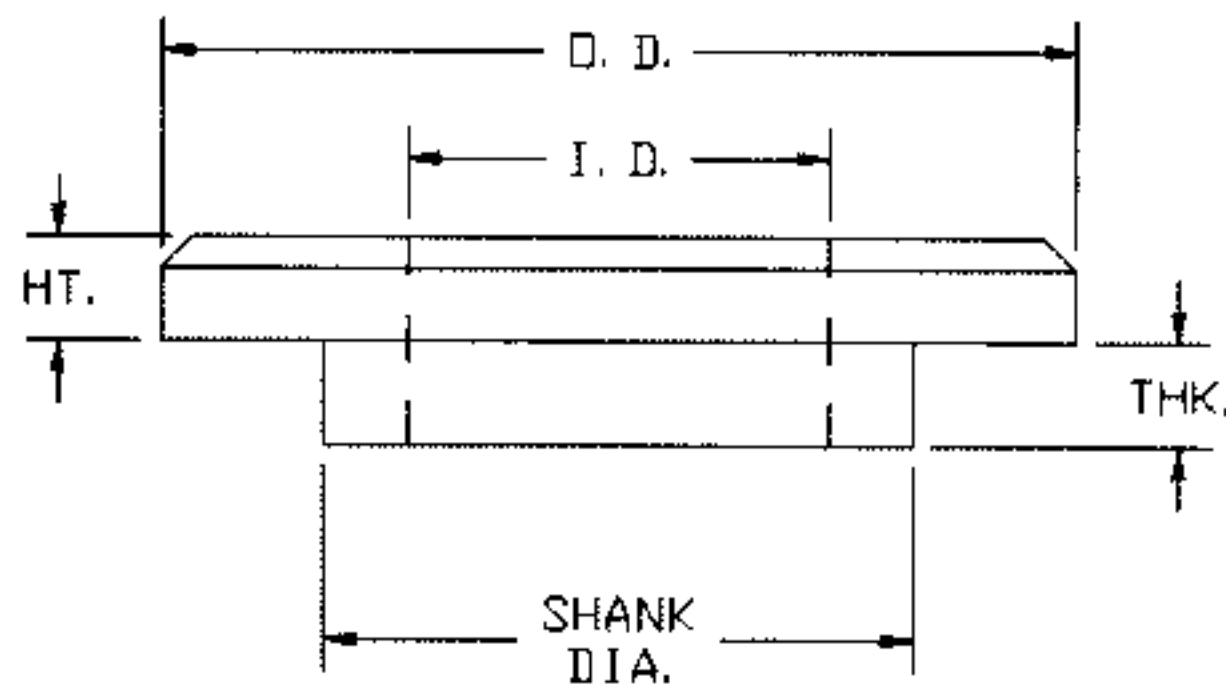
PART NO.	SCREW CLEAR.	I.D.	O.D.	THK.
760-2640	#6	9/64	7/16	3/32
760-2641	#8	11/64	33/64	7/64
760-2642	#10	13/64	37/64	9/64
760-2643	#12	15/64	39/64	5/32
760-2644	1/4"	17/64	43/64	3/16

THREADED ROD



BRASS			NYLON	
1-FT.LENGTH PART NO.	2-FT.LENGTH PART NO.	THREAD	1-FT.LENGTH PART NO.	2-FT.LENGTH PART NO.
701-8000-1	701-8000-2	6-32	701-8050-1	701-8050-2
701-8001-1	701-8001-2	8-32	701-8051-1	701-8051-2
701-8002-1	701-8002-2	10-32	701-8052-1	701-8052-2
701-8003-1	701-8003-2	1/4-20	701-8053-1	701-8053-2

NYLON INSULATED FINISHING WASHERS



PART NO	SCREW CLEAR.	I.D.	O.D.	THK.	HT.	SHANK DIA.
760-2600	#2	3/32	1/4	.080	.040	5/32
760-2601	#4	1/8	9/32			3/16
760-2602	#6	9/64	21/64	.100	.050	7/32
760-2603	#8	11/64	3/8			1/4
760-2604	#10	13/64	7/16	.120	.060	9/32
760-2605	1/4"	1/4	9/16			3/8
760-2606	3/8"	3/8	3/4			1/2

WE CROSS REFERENCE
MOST MAJOR MANUFACTURERS

FOR ADDITIONAL SIZES AND MATERIALS, CONTACT FACTORY

CONCORD