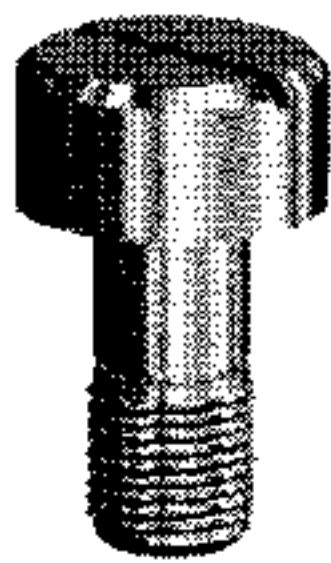


PRECISION SHOULDER SCREWS

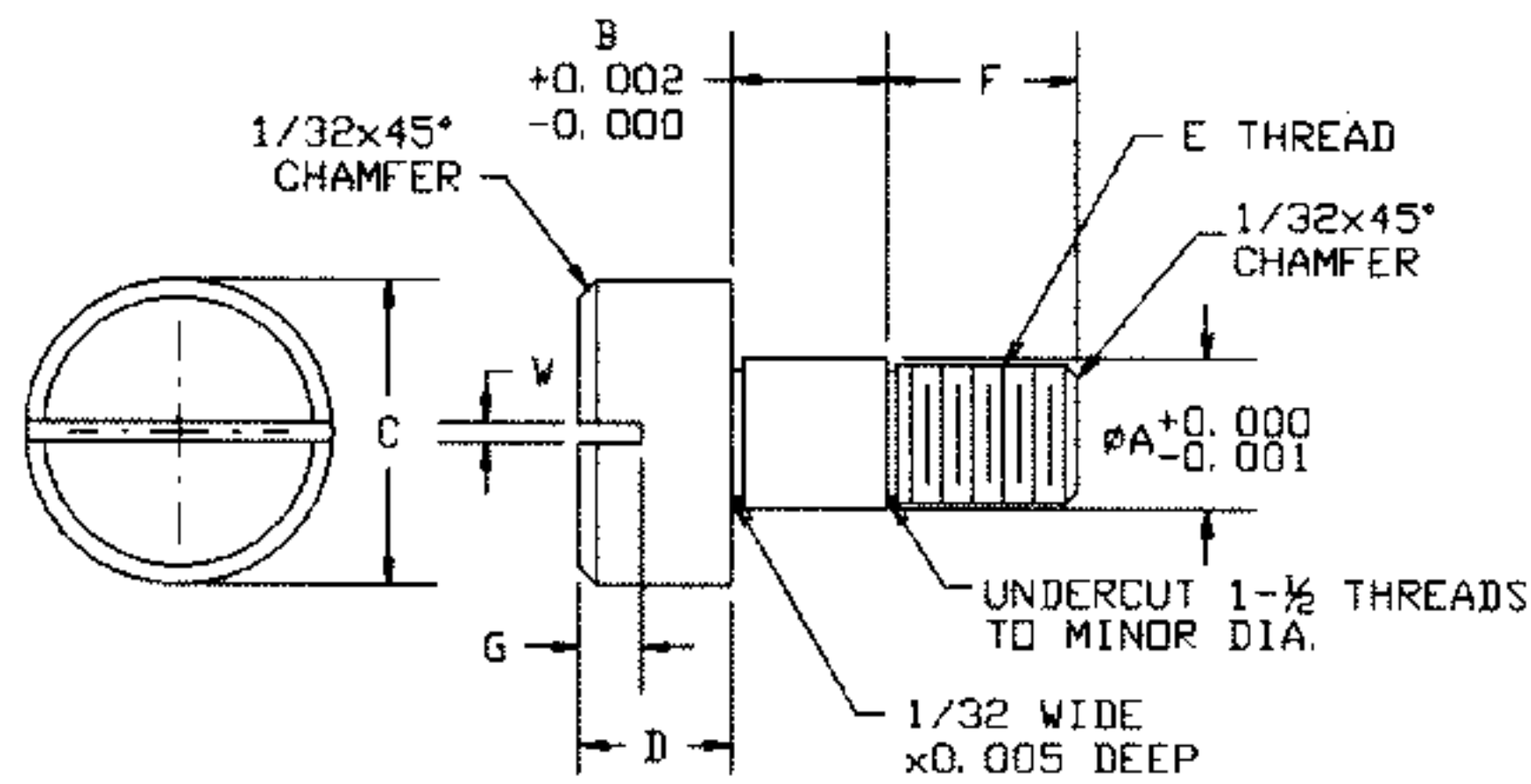
SLOTTED HEAD SHOULDER SCREW



PART NUMBERS:

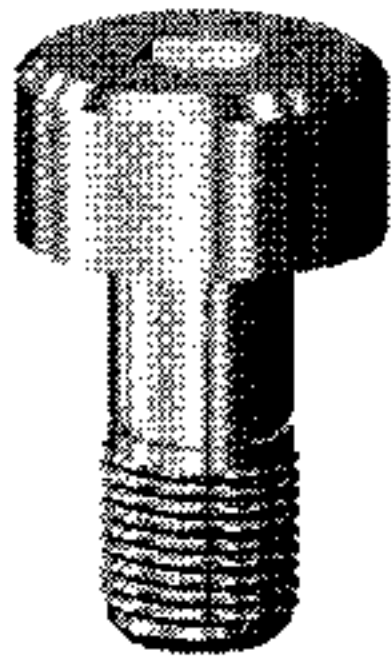
40-43XX
40-45XX

MATERIAL:
Stainless Steel per
ASTM A581/582



PART NUMBER		A	B	C	D	E	F	G	W
ALLOY	ALLOY	+0.000 -0.001	+0.002 -0.000				±0.005	±0.015	±0.015
303	416								
40-4310	40-4510	1/8 (.1245)	1/8 .1250	1/4	1/8	4-40	5/32	.062	.062
40-4311	40-4511		3/16 .1875						
40-4312	40-4512		1/4 .2500						
40-4313	40-4513		5/16 .3125						
40-4314	40-4514		3/8 .3750						
40-4336	40-4536	3/16 (.187)	1/8 .1250	5/16	5/32	8-32	3/16	5/64	3/32
40-4337	40-4537		3/16 .1875						

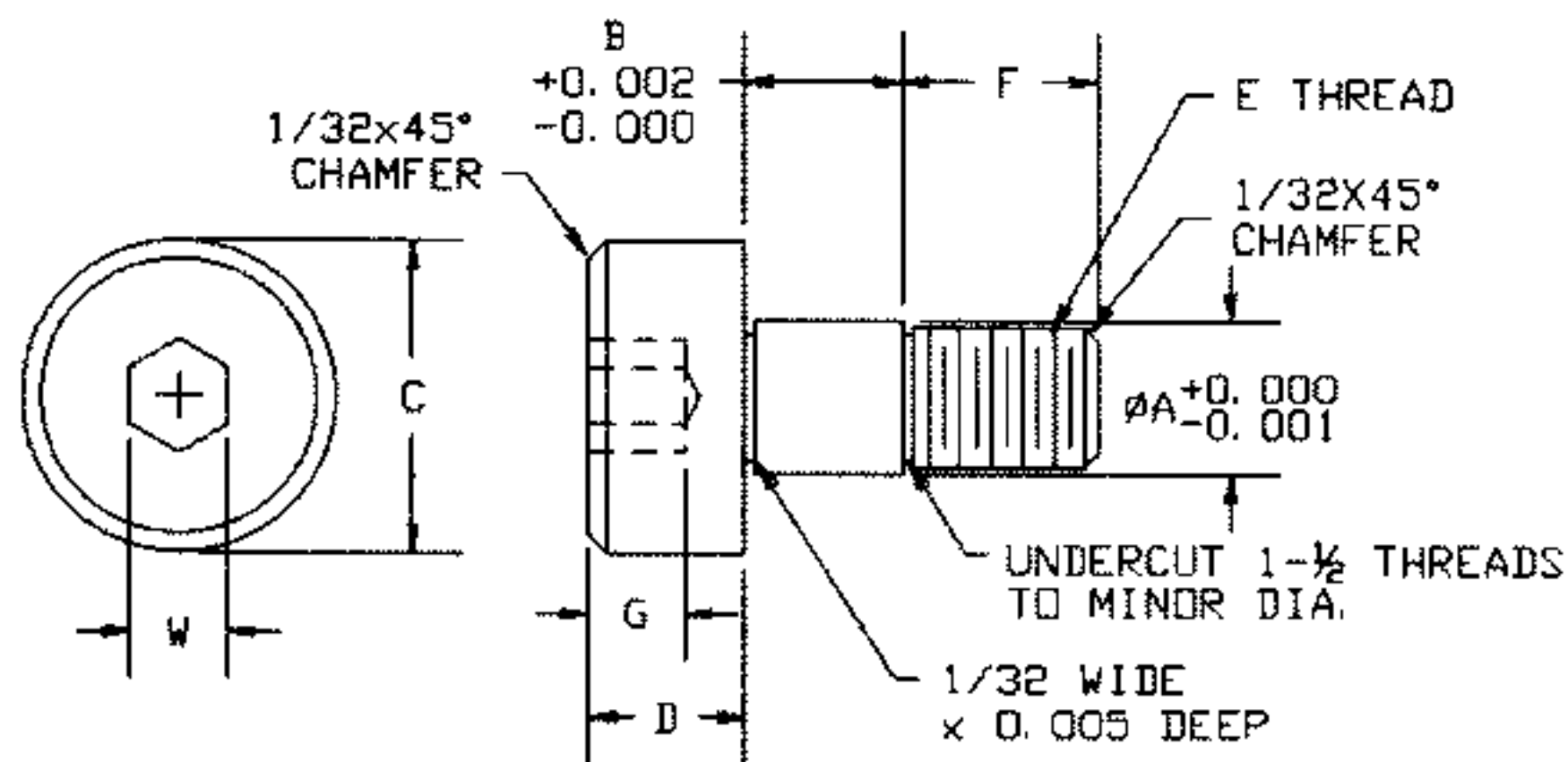
SOCKET HEAD SHOULDER SCREW



PART NUMBERS:

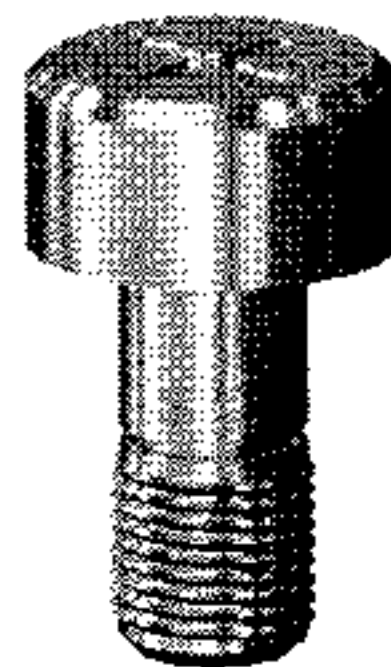
40-44XX
40-46XX

MATERIAL:
Stainless Steel per
ASTM A581/582



PART NUMBER		A	B	C	D	E	F	G	W
ALLOY	ALLOY	+0.000 -0.001	+0.002 -0.000				±0.005	±0.015	±0.015
303	416								
40-4410	40-4610	1/8 (.1245)	1/8 .1250	1/4	1/8	4-40	5/32	.062	.062
40-4411	40-4611		3/16 .1875						
40-4412	40-4612		1/4 .2500						
40-4413	40-4613		5/16 .3125						
40-4414	40-4614		3/8 .3750						
40-4436	40-4636	3/16 (.187)	1/8 .1250	5/16	5/32	8-32	3/16	5/64	3/32
40-4437	40-4637		3/16 .1875						

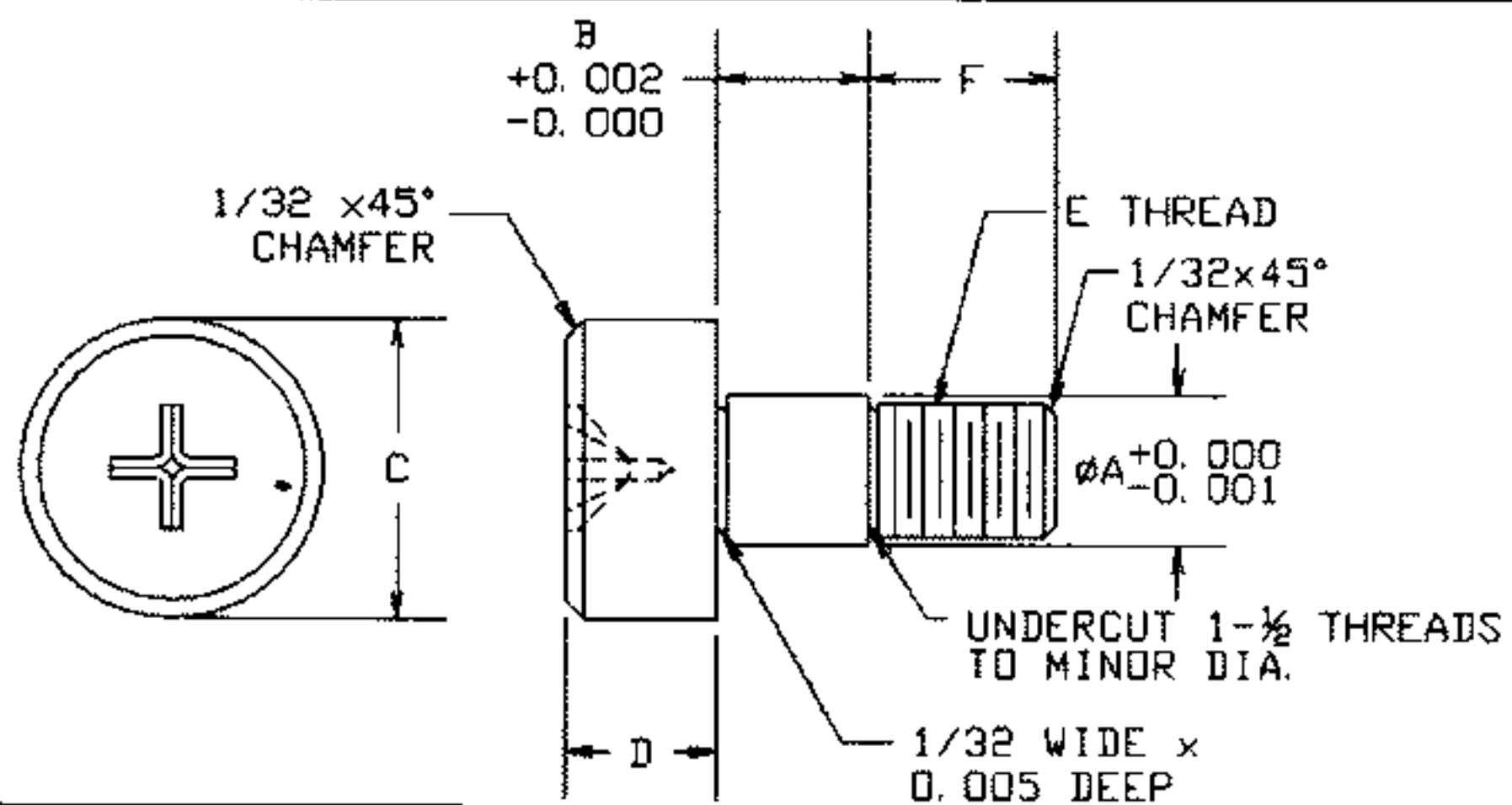
PHILLIPS HEAD SHOULDER SCREW



PART NUMBERS:

40-47XX

MATERIAL:
Stainless Steel per
ASTM A581/582



PART NUMBER		A	B	C	D	E	F
ALLOY	ALLOY	+0.000 -0.001	+0.002 -0.000				±0.005
303	416						
40-4710		1/8 (.1245)	1/8 .1250	1/4	1/8	4-40	5/32
40-4711			3/16 .1875				
40-4712			1/4 .2500				
40-4713			5/16 .3125				
40-4714			3/8 .3750				
40-4736		3/16 (.187)	1/8 .1250	5/16	5/32	8-32	3/16
40-4737			3/16 .1875				

FOR ADDITIONAL SIZES AND MATERIALS, CONTACT FACTORY