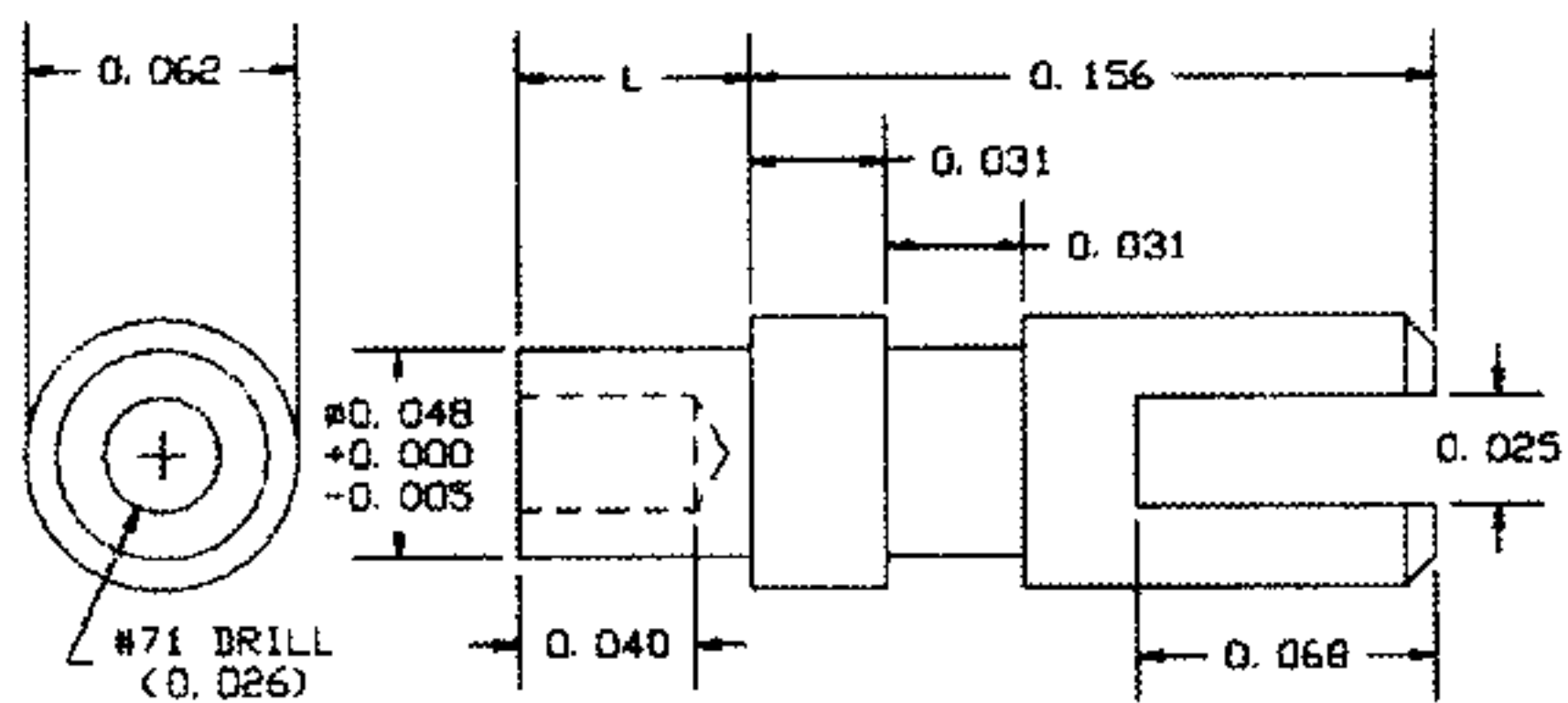


TERMINALS

12-462-X-01

MATERIAL: BRASS
FINISH: SILVER



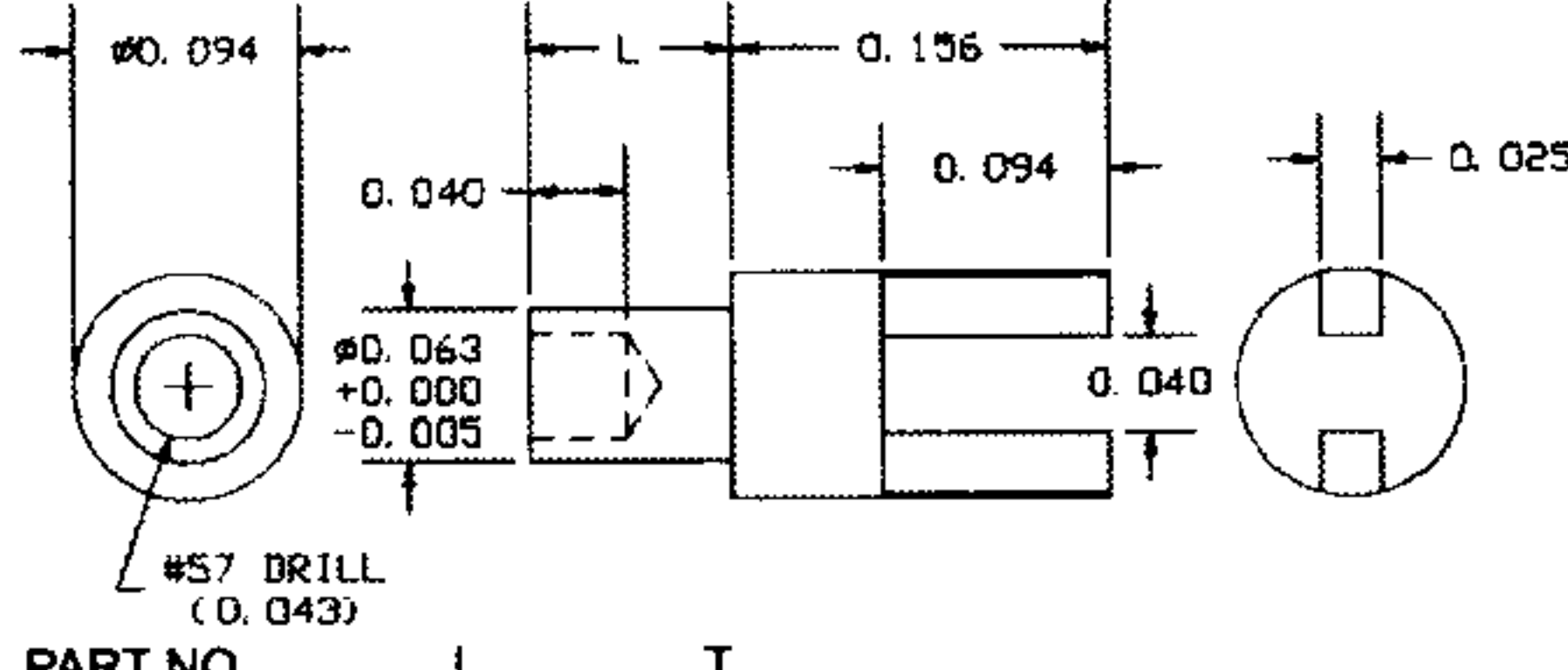
PART NO.	L	T
12-462-11	.037	1/64
12-462-1	.053	1/32
12-462-2	.084	1/16
12-462-3	.115	3/32
12-462-4	.147	1/8
12-462-6	.209	3/16

TOOLS

ANVIL	PUNCH
TA10-462	TP47-26

12-459-X-01

MATERIAL: BRASS
FINISH: SILVER



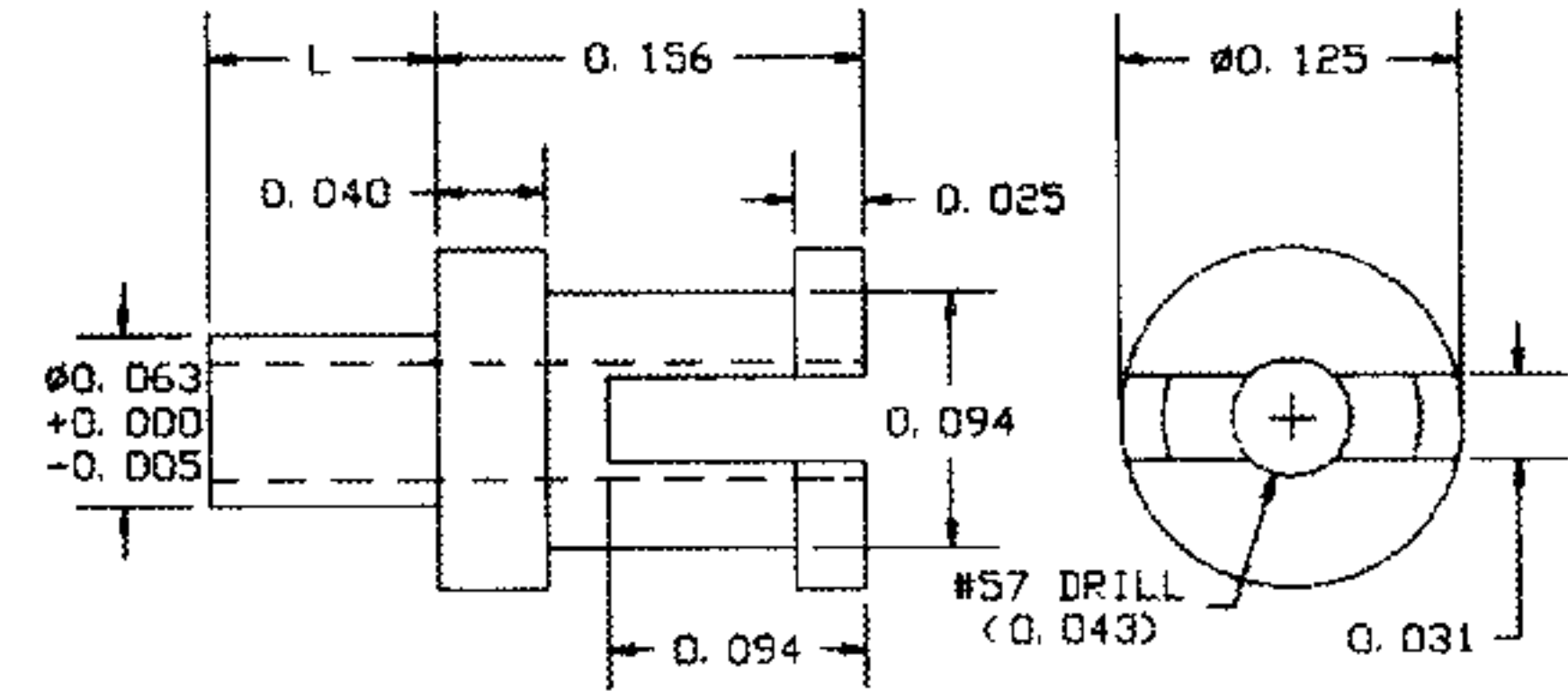
PART NO.	L	T
12-459-11	.037	1/64
12-459-1	.053	1/32
12-459-2	.084	1/16
12-459-3	.115	3/32
12-459-4	.147	1/8
12-459-5	.178	5/32
12-459-6	.209	3/16

TOOLS

ANVIL	PUNCH
TA10-407	TP62-44

12-430-X-01

MATERIAL: BRASS
FINISH: SILVER



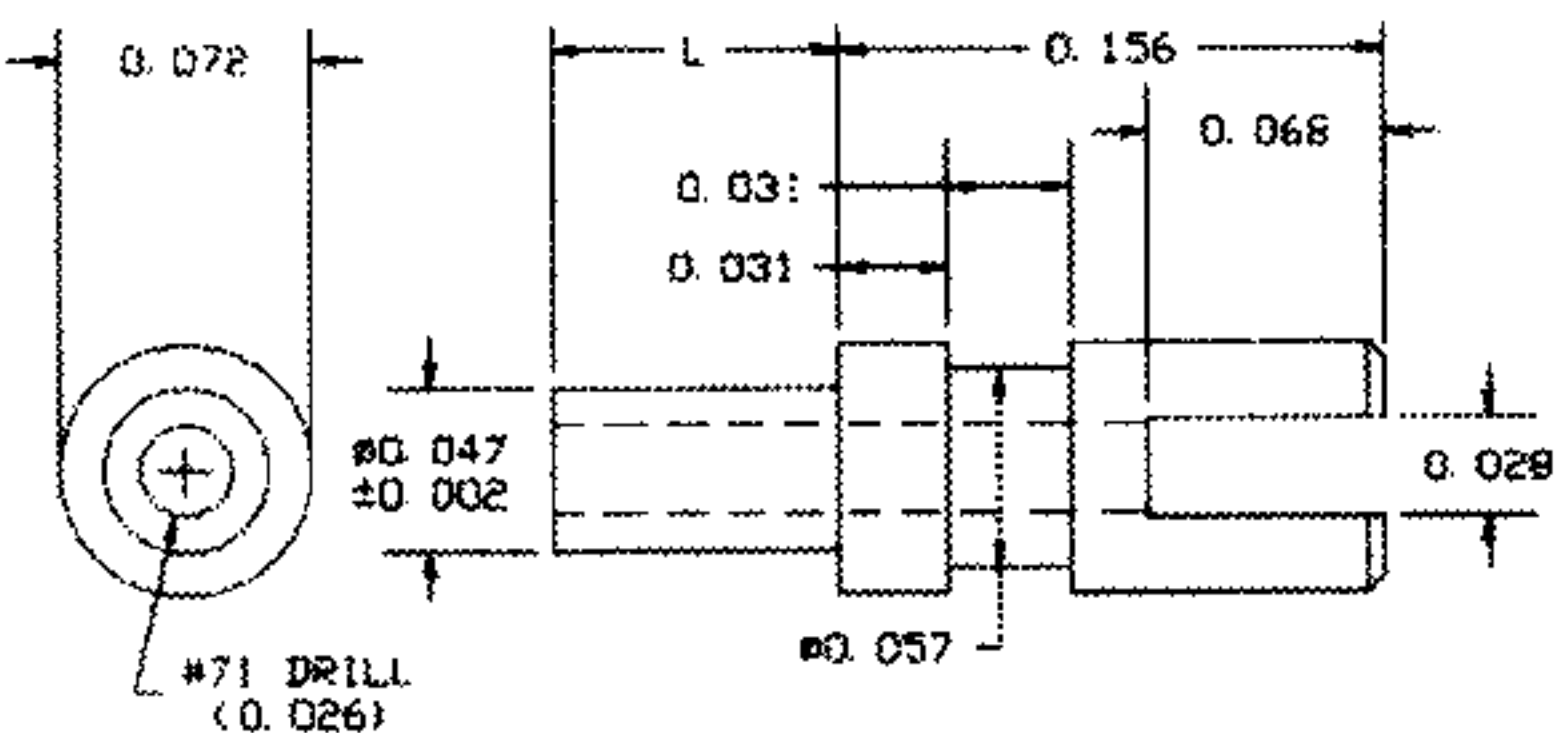
PART NO.	L	T
12-430-11	.037	1/64
12-430-1	.053	1/32
12-430-2	.084	1/16
12-430-3	.115	3/32
12-430-4	.147	1/8

TOOLS

ANVIL	PUNCH
TA10-430	TP62-44

10-414-X-01

MATERIAL: BRASS
FINISH: SILVER



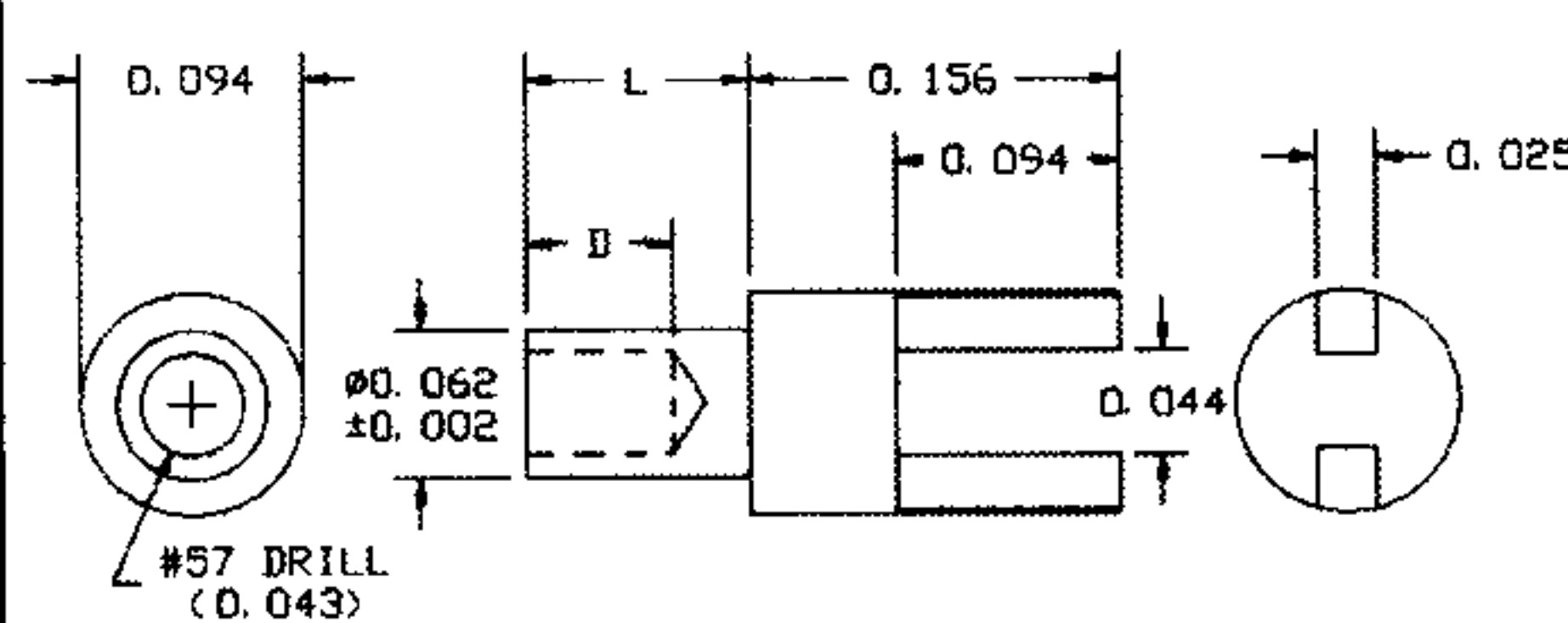
PART NO.	L	T	RECOMMENDED MOUNTING HOLE .052 DIA.(55 DRILL)
10-414-11	.035	1/64	
10-414-1	.051	1/32	
10-414-2	.082	1/16	
10-414-3	.113	3/32	
10-414-4	.145	1/8	
10-414-6	.207	3/16	
10-414-8	.270	1/4	

TOOLS

ANVIL	PUNCH
TA10-414	TP47-26

10-489-X-01

MATERIAL: BRASS
FINISH: SILVER



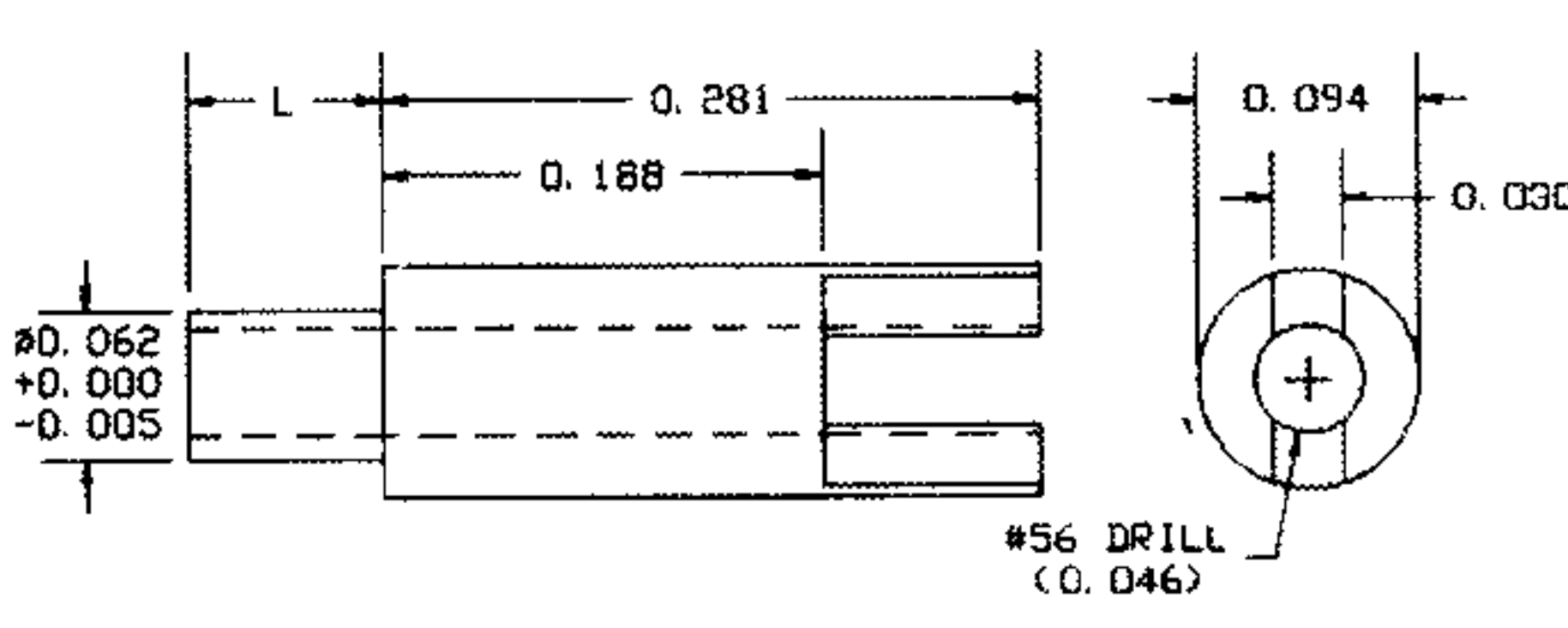
PART NO.	L	T	D	RECOMMENDED MOUNTING HOLE .067 DIA.(#51 DRILL)
10-489-11	.025	1/64	.040	
10-489-1	.045	1/32	.040	
10-489-2	.094	1/16	.062	
10-489-3	.125	3/32	.062	
10-489-4	.156	1/8	.062	

TOOLS

ANVIL	PUNCH
TA10-401	TP62-44

12-447-X-01

MATERIAL: BRASS
FINISH: SILVER



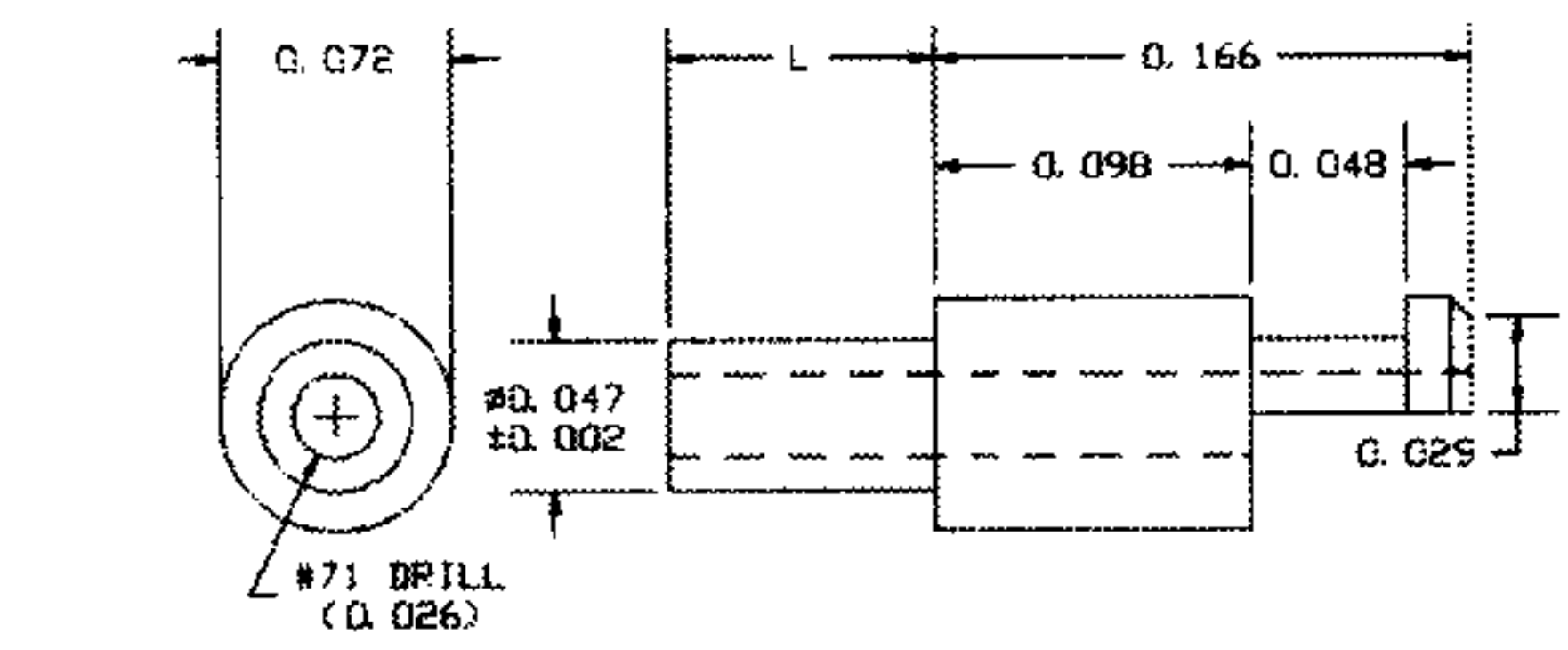
PART NO.	L	T
12-447-11	.037	1/64
12-447-1	.053	1/32
12-447-2	.084	1/16
12-447-3	.115	3/32
12-447-4	.147	1/8

TOOLS

ANVIL	PUNCH
TA10-447	TP62-44

10-415-X-01

MATERIAL: BRASS
FINISH: ELECTRO-TIN



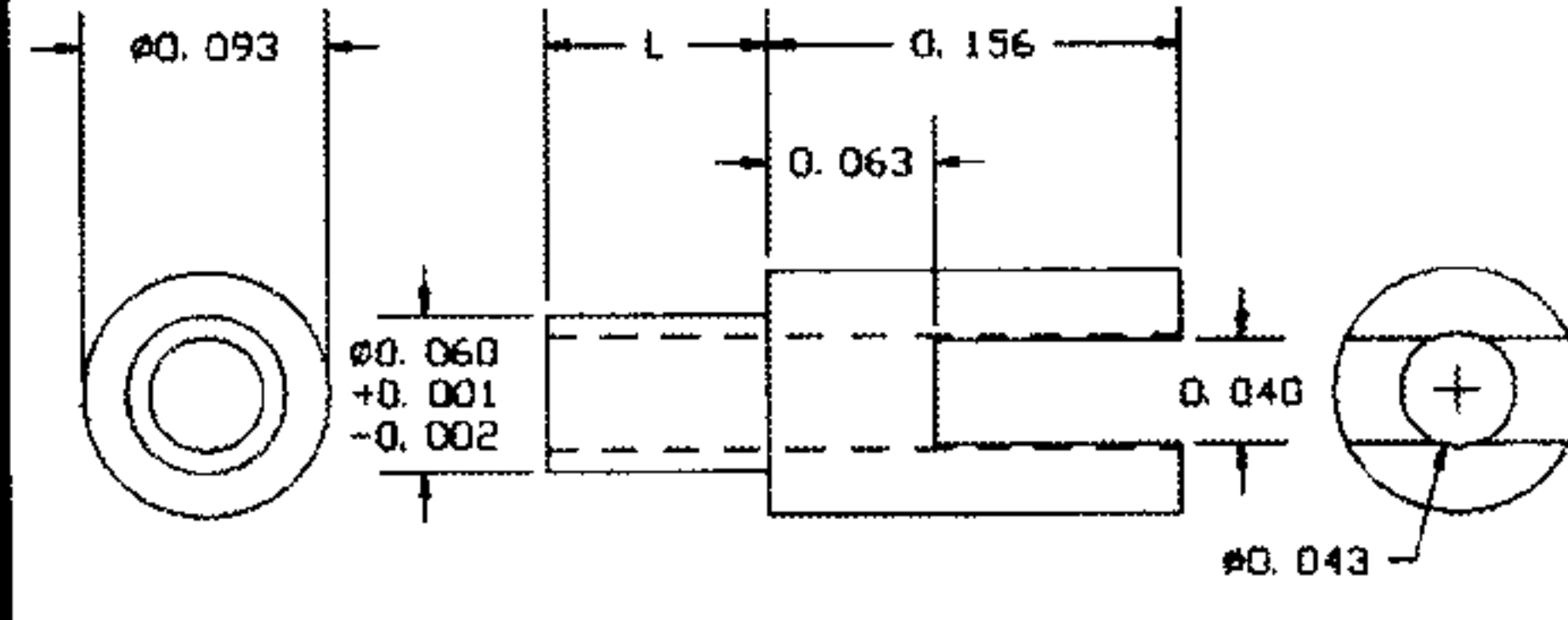
PART NO.	L	T	RECOMMENDED MOUNTING HOLE .052 DIA.(55 DRILL)
10-415-11	.035	1/64	
10-415-1	.051	1/32	
10-415-2	.082	1/16	
10-415-3	.113	3/32	
10-415-4	.145	1/8	
10-415-6	.207	3/16	
10-415-8	.270	1/4	

TOOLS

ANVIL	PUNCH
TA10-415	TP47-26

10-477-X-01

MATERIAL: BRASS
FINISH: SILVER



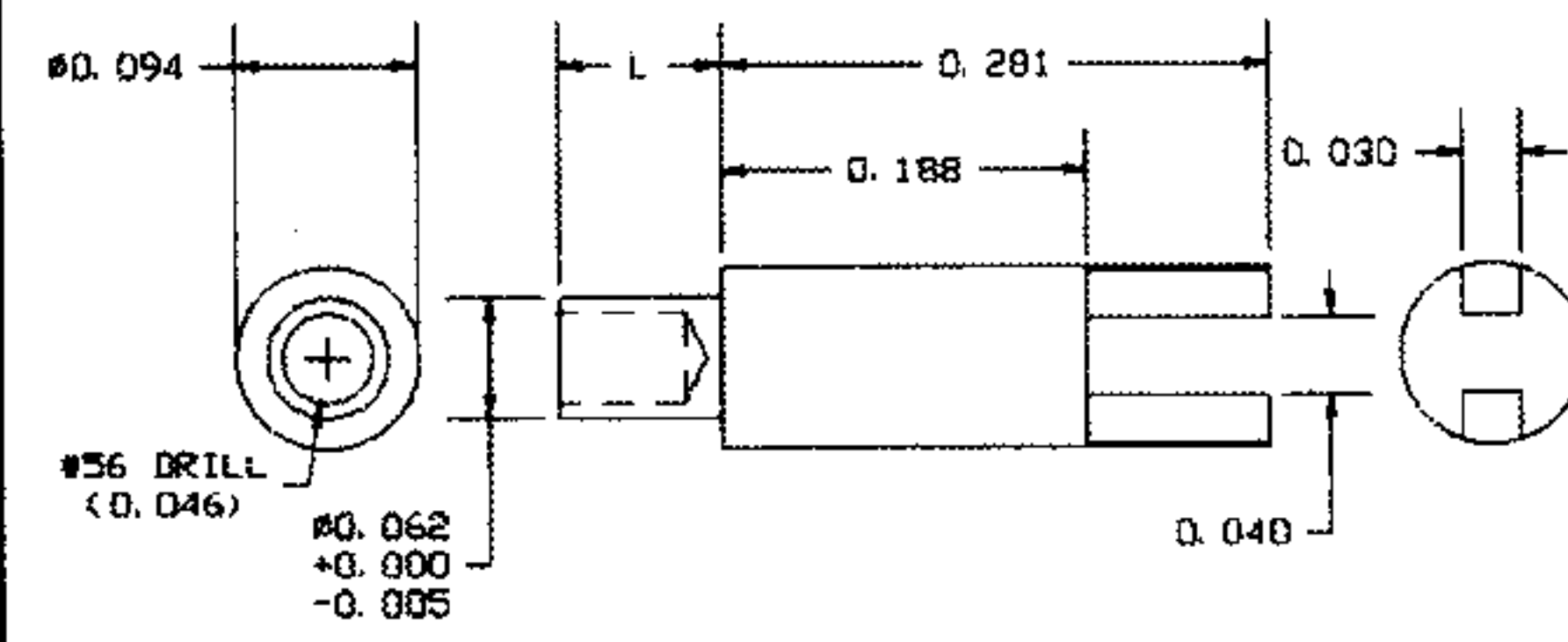
PART NO.	L	T	RECOMMENDED MOUNTING HOLE .0635 DIA.(52 DRILL)
10-477-11	.037	1/64	
10-477-1	.053	1/32	
10-477-2	.084	1/16	
10-477-3	.115	3/32	
10-477-4	.147	1/8	
10-477-5	.179	5/32	
10-477-6	.218	3/16	

TOOLS

ANVIL	PUNCH
TA10-477	TP62-44

12-460-X-01

MATERIAL: BRASS
FINISH: SILVER



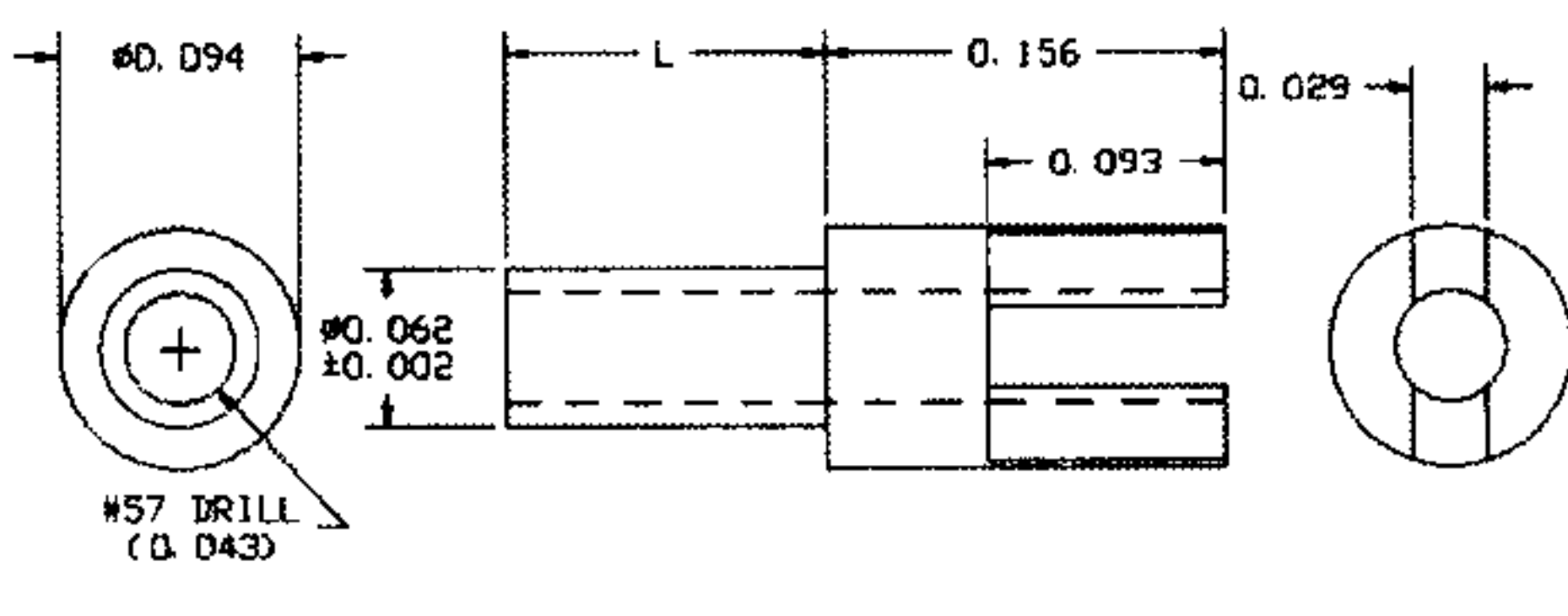
PART NO.	L	T
12-460-11	.037	1/64
12-460-1	.053	1/32
12-460-2	.084	1/16
12-460-3	.115	3/32
12-460-4	.147	1/8

TOOLS

ANVIL	PUNCH
TA10-447	TP62-44

10-401-X-01

MATERIAL: BRASS
FINISH: SILVER



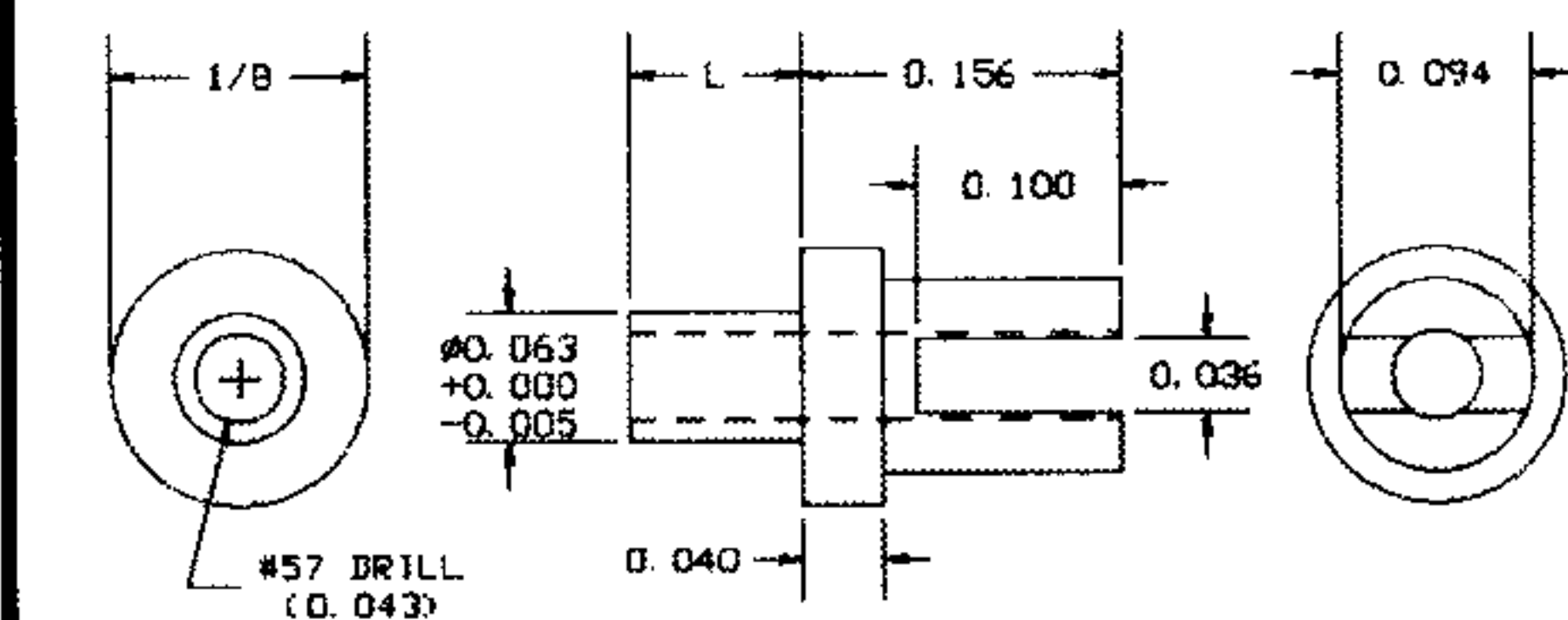
PART NO.	L	T	RECOMMENDED MOUNTING HOLE .067 DIA.(51 DRILL)
10-401-11	.025	1/64	
10-401-1	.045	1/32	
10-401-2	.094	1/16	
10-401-3	.125	3/32	
10-401-4	.156	1/8	
10-401-6	.219	3/16	
10-401-8	.281	1/4	

TOOLS

ANVIL	PUNCH
TA10-401	TP62-44

12-449-X-01

MATERIAL: BRASS
FINISH: SILVER



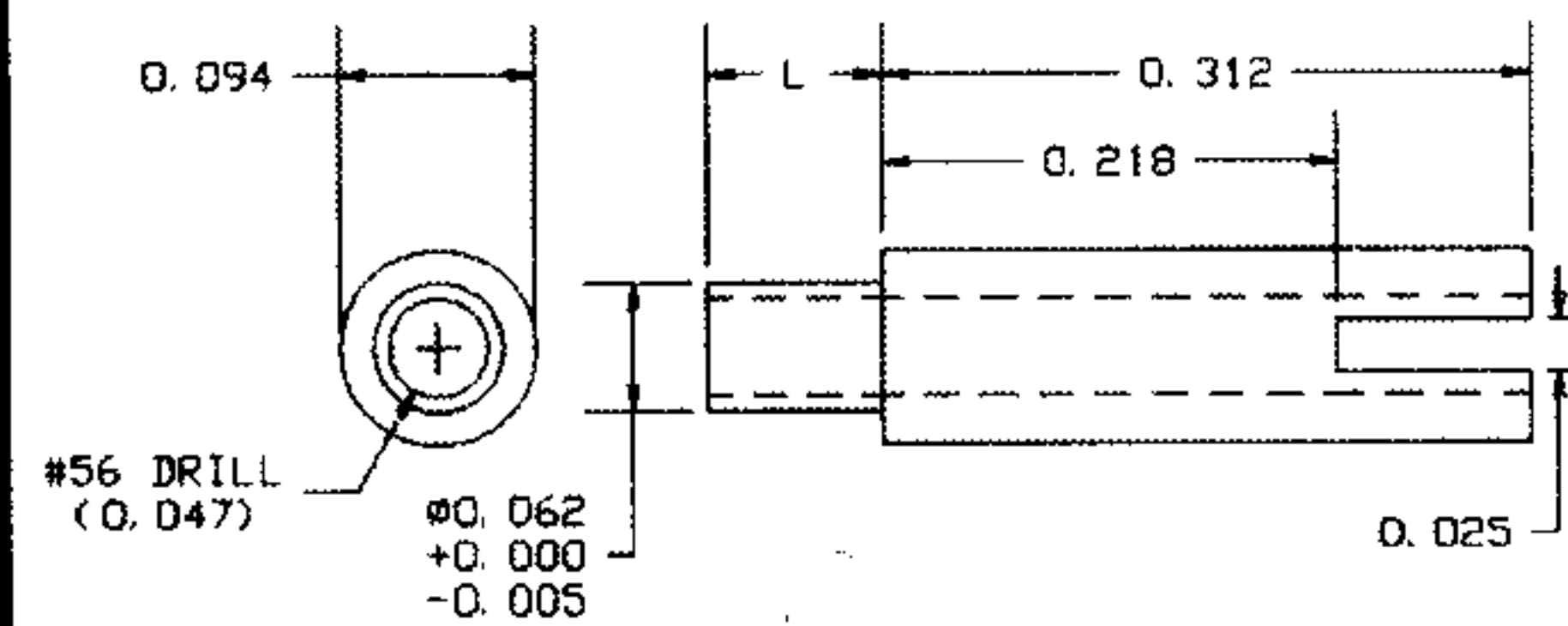
PART NO.	L	T
12-449-11	.037	1/64
12-449-1	.053	1/32
12-449-2	.084	1/16
12-449-3	.115	3/32
12-449-4	.147	1/8

TOOLS

ANVIL	PUNCH
TA10-458	TP62-44

12-448-X-01

MATERIAL: BRASS
FINISH: SILVER



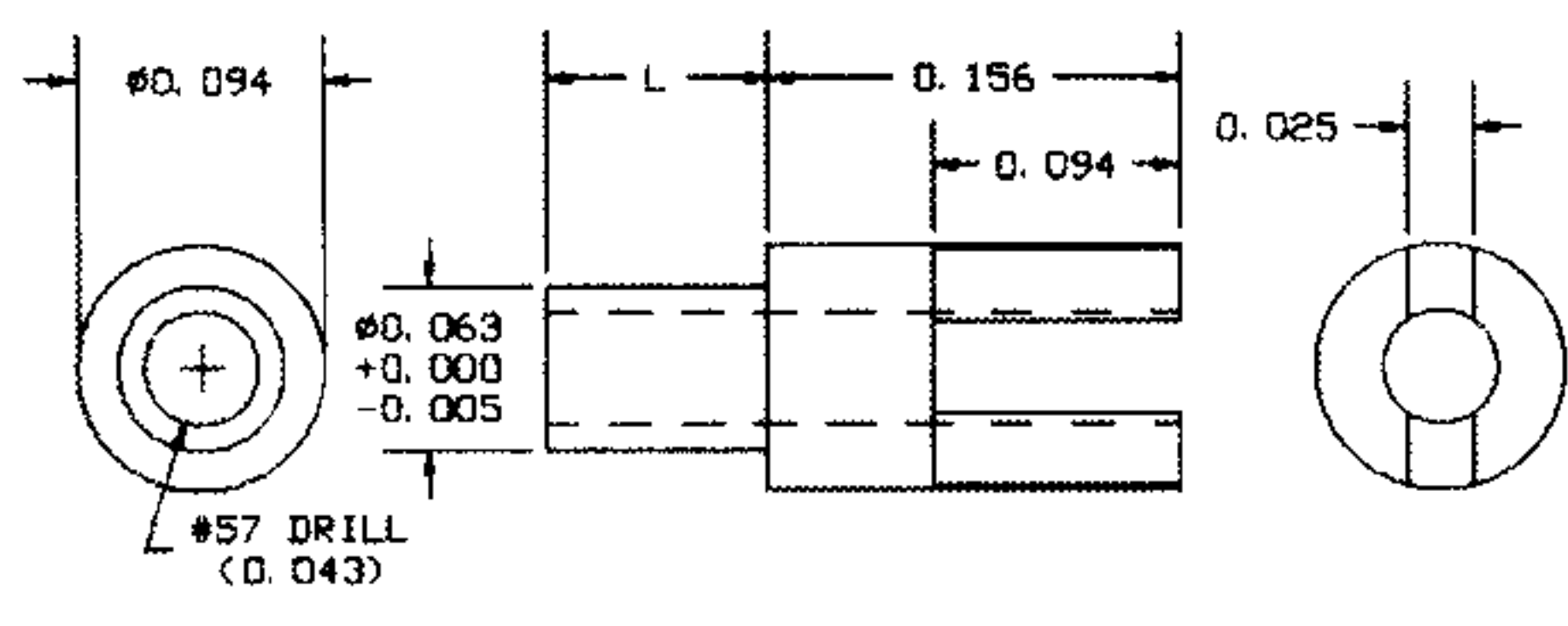
PART NO.	L	T
12-448-11	.037	1/64
12-448-1	.053	1/32
12-448-2	.084	1/16
12-448-3	.115	3/32
12-448-4	.147	1/8

TOOLS

ANVIL	PUNCH
TA10-448	TP62-44

12-471-X-01

MATERIAL: BRASS
FINISH: SILVER



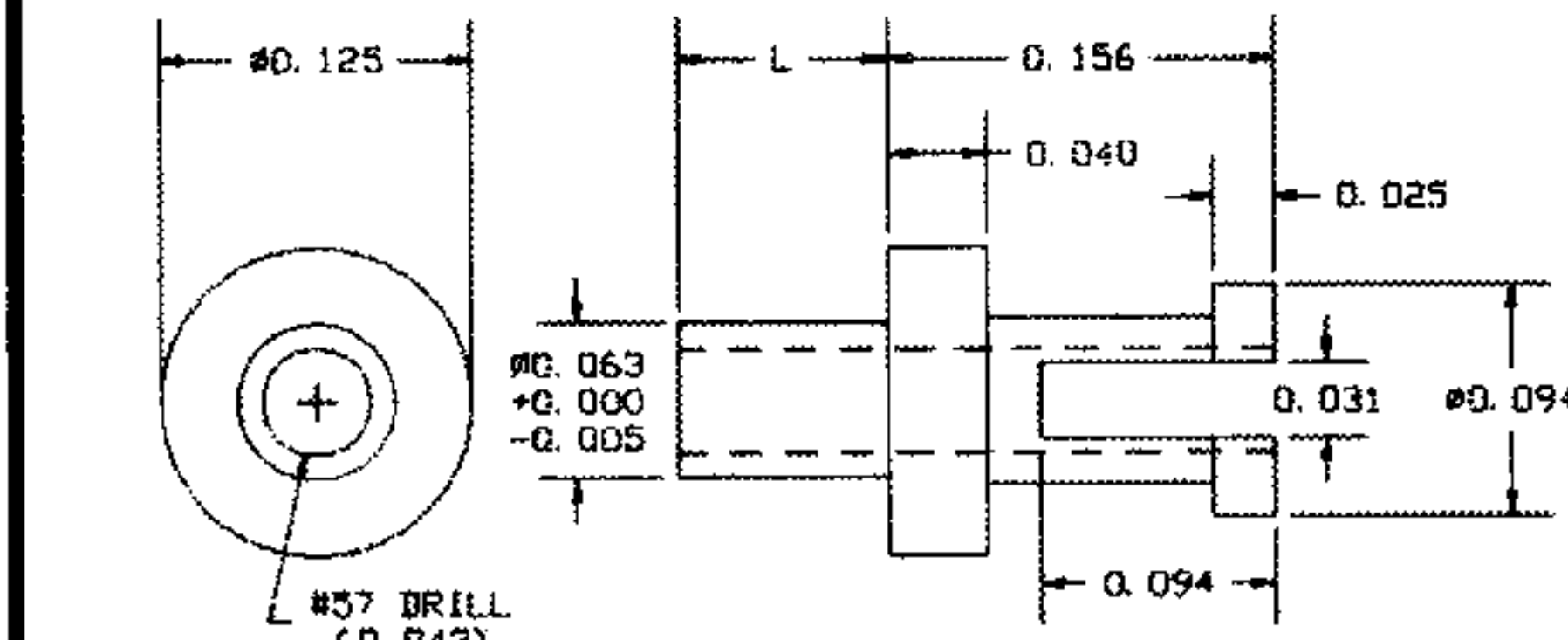
PART NO.	L	T
12-471-11	.037	1/64
12-471-1	.053	1/32
12-471-2	.084	1/16
12-471-3	.115	3/32
12-471-4	.147	1/8
12-471-5	.178	5/32
12-471-6	.209	3/16

TOOLS

ANVIL	PUNCH
TA10-401	TP62-44

12-416-X-01

MATERIAL: BRASS
FINISH: SILVER



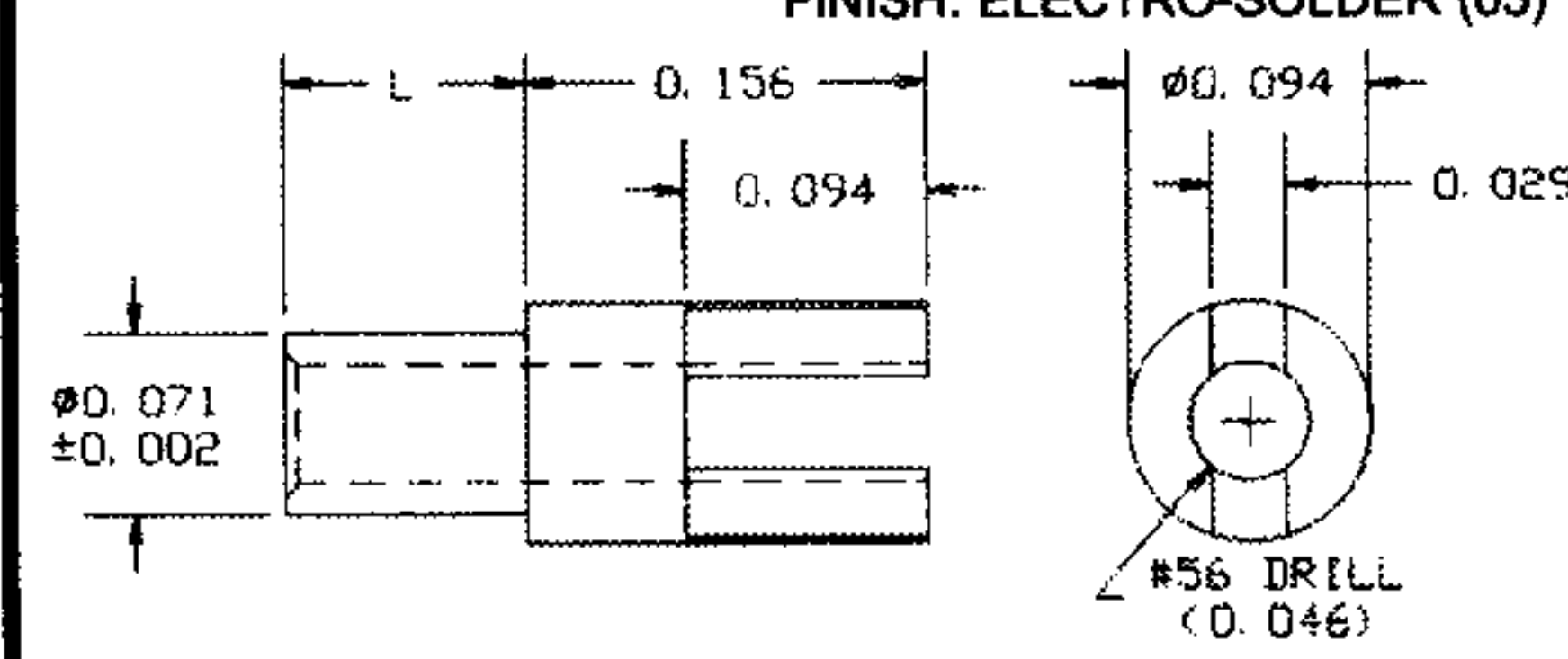
PART NO.	L	T
12-416-11	.037	1/64
12-416-1	.053	1/16
12-416-2	.084	1/16
12-416-3	.115	3/32
12-416-4	.147	1/8

TOOLS

ANVIL	PUNCH
TA10-416	TP62-44

10-457-X-XX

MATERIAL: BRASS
FINISH: SILVER (01)
FINISH: ELECTRO-SOLDER (05)



PART NO.	L	T	RECOMMENDED MOUNTING HOLE .076 DIA.(#48 DRILL)
10-457-11	.025	1/64	
10-457-1	.045	1/32	
10-457-2	.094	1/16	
10-457-3	.125	3/32	
10-457-4	.156	1/8	
10-457-6	.219	3/16	
10-457-8	.281	1/4	

TOOLS

ANVIL	PUNCH
TA10-401	TP71-43

FOR ADDITIONAL SIZES AND MATERIALS, CONTACT FACTORY

800-847-4162 (Outside N.Y.S.)

Ph: 212-777-6571 Fax: 212-991-0161

sales@concord-electronics.com

engineering@concord-electronics.com

