

STANDOFFS, THRUHOLE, ROUND

STANDOFFS THRUHOLE, ROUND

549-9XXX-02

BRASS PER ASTM B16

549-9XXX-XXX-02

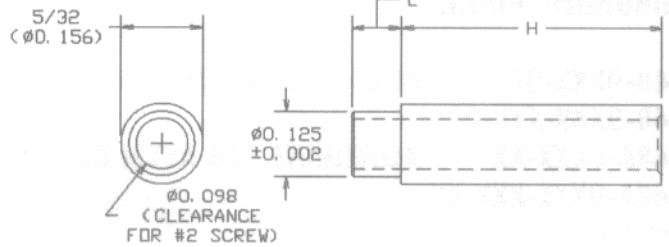
649A-9XXX-XX

ALUMINUM PER ASTM B211

649A-9XXX-XXX-XX

BASIC PART NO.

FINISH*



| BOARD THICKNESS | H | L | BRASS | ALUMINUM | BOARD THICKNESS | H | L | BRASS | ALUMINUM |
|-----------------|-------|------|--------------|---------------|-----------------|-------|------|----------|-----------|
| 1/32 | .125 | .062 | 549-9208-062 | 649A-9208-062 | 1/32 | .125 | .075 | 549-9208 | 649A-9208 |
| 1/32 | .188 | .062 | 549-9222-062 | 649A-9222-062 | 1/32 | .188 | .075 | 549-9222 | 649A-9222 |
| 1/32 | .250 | .062 | 549-9229-062 | 649A-9229-062 | 1/32 | .250 | .075 | 549-9229 | 649A-9229 |
| 1/32 | .375 | .062 | 549-9243-062 | 649A-9243-062 | 1/32 | .375 | .075 | 549-9243 | 649A-9243 |
| 1/32 | .500 | .062 | 549-9257-062 | 649A-9257-062 | 1/32 | .500 | .075 | 549-9257 | 649A-9257 |
| 1/32 | .625 | .062 | 549-9271-062 | 649A-9271-062 | 1/32 | .625 | .075 | 549-9271 | 649A-9271 |
| 1/32 | .750 | .062 | 549-9285-062 | 649A-9285-062 | 1/32 | .750 | .075 | 549-9285 | 649A-9285 |
| 1/32 | 1.000 | .062 | 549-9313-062 | 649A-9313-062 | 1/32 | 1.000 | .075 | 549-9313 | 649A-9313 |
| 1/16 | .125 | .094 | 549-9209-094 | 649A-9209-094 | 1/16 | .125 | .105 | 549-9209 | 649A-9209 |
| 1/16 | .188 | .094 | 549-9223-094 | 649A-9223-094 | 1/16 | .188 | .105 | 549-9223 | 649A-9223 |
| 1/16 | .250 | .094 | 549-9230-094 | 649A-9230-094 | 1/16 | .250 | .105 | 549-9230 | 649A-9230 |
| 1/16 | .375 | .094 | 549-9244-094 | 649A-9244-094 | 1/16 | .375 | .105 | 549-9244 | 649A-9244 |
| 1/16 | .500 | .094 | 549-9258-094 | 649A-9258-094 | 1/16 | .500 | .105 | 549-9258 | 649A-9258 |
| 1/16 | .625 | .094 | 549-9272-094 | 649A-9272-094 | 1/16 | .625 | .105 | 549-9272 | 649A-9272 |
| 1/16 | .750 | .094 | 549-9286-094 | 649A-9286-094 | 1/16 | .750 | .105 | 549-9286 | 649A-9286 |
| 1/16 | 1.000 | .094 | 549-9314-094 | 649A-9314-094 | 1/16 | 1.000 | .105 | 549-9314 | 649A-9314 |
| 3/32 | .125 | .125 | 549-9210-125 | 649A-9210-125 | 3/32 | .125 | .135 | 549-9210 | 649A-9210 |
| 3/32 | .188 | .125 | 549-9224-125 | 649A-9224-125 | 3/32 | .188 | .135 | 549-9224 | 649A-9224 |
| 3/32 | .250 | .125 | 549-9231-125 | 649A-9231-125 | 3/32 | .250 | .135 | 549-9231 | 649A-9231 |
| 3/32 | .375 | .125 | 549-9245-125 | 649A-9245-125 | 3/32 | .375 | .135 | 549-9245 | 649A-9245 |
| 3/32 | .500 | .125 | 549-9259-125 | 649A-9259-125 | 3/32 | .500 | .135 | 549-9259 | 649A-9259 |
| 3/32 | .625 | .125 | 549-9273-125 | 649A-9273-125 | 3/32 | .625 | .135 | 549-9273 | 649A-9273 |
| 3/32 | .750 | .125 | 549-9287-125 | 649A-9287-125 | 3/32 | .750 | .135 | 549-9287 | 649A-9287 |
| 3/32 | 1.000 | .125 | 549-9315-125 | 649A-9315-125 | 3/32 | 1.000 | .135 | 549-9315 | 649A-9315 |
| 1/8 | .125 | .156 | 549-9211-156 | 649A-9211-156 | 1/8 | .125 | .165 | 549-9211 | 649A-9211 |
| 1/8 | .188 | .156 | 549-9225-156 | 649A-9225-156 | 1/8 | .188 | .165 | 549-9225 | 649A-9225 |
| 1/8 | .250 | .156 | 549-9232-156 | 649A-9232-156 | 1/8 | .250 | .165 | 549-9232 | 649A-9232 |
| 1/8 | .375 | .156 | 549-9246-156 | 649A-9246-156 | 1/8 | .375 | .165 | 549-9246 | 649A-9246 |
| 1/8 | .500 | .156 | 549-9260-156 | 649A-9260-156 | 1/8 | .500 | .165 | 549-9260 | 649A-9260 |
| 1/8 | .625 | .156 | 549-9274-156 | 649A-9274-156 | 1/8 | .625 | .165 | 549-9274 | 649A-9274 |
| 1/8 | .750 | .156 | 549-9288-156 | 649A-9288-156 | 1/8 | .750 | .165 | 549-9288 | 649A-9288 |
| 1/8 | 1.000 | .156 | 549-9316-156 | 649A-9316-156 | 1/8 | 1.000 | .165 | 549-9316 | 649A-9316 |
| 3/16 | .125 | .219 | 549-9213-219 | 649A-9213-219 | | | | | |
| 3/16 | .188 | .219 | 549-9227-219 | 649A-9227-219 | | | | | |
| 3/16 | .250 | .219 | 549-9234-219 | 649A-9234-219 | | | | | |
| 3/16 | .375 | .219 | 549-9248-219 | 649A-9248-219 | | | | | |
| 3/16 | .500 | .219 | 549-9262-219 | 649A-9262-219 | | | | | |
| 3/16 | .625 | .219 | 549-9276-219 | 649A-9276-219 | | | | | |
| 3/16 | .750 | .219 | 549-9290-219 | 649A-9290-219 | | | | | |
| 3/16 | 1.000 | .219 | 549-9318-219 | 649A-9318-219 | | | | | |
| 1/4 | .125 | .281 | 549-9214-281 | 649A-9214-281 | | | | | |
| 1/4 | .188 | .281 | 549-9228-281 | 649A-9228-281 | | | | | |
| 1/4 | .250 | .281 | 549-9235-281 | 649A-9235-281 | | | | | |
| 1/4 | .375 | .281 | 549-9249-281 | 649A-9249-281 | | | | | |
| 1/4 | .500 | .281 | 549-9263-281 | 649A-9263-281 | | | | | |
| 1/4 | .625 | .281 | 549-9277-281 | 649A-9277-281 | | | | | |
| 1/4 | .750 | .281 | 549-9291-281 | 649A-9291-281 | | | | | |
| 1/4 | 1.000 | .281 | 549-9319-281 | 649A-9319-281 | | | | | |

- FOR BRASS PARTS, ADD -02 SUFFIX TO PART NUMBER FOR STANDARD NICKEL FINISH
- FOR ALUMINUM PARTS, ADD -17 SUFFIX TO PART NUMBER FOR STANDARD NON-CHROMATE CLEAR PROTECTIVE COATING OR -16 FOR YELLOW IRRIDITE FINISH.

SWAGING TOOLS

| H | ANVIL | PUNCH |
|---------------|-----------|----------|
| .125 .188 | TA156-125 | TP125-98 |
| .250 .375 | TA156-250 | TP125-98 |
| .500 .625 | TA156-500 | TP125-98 |
| .750 1.000 | TA156-750 | TP125-98 |

FOR ADDITIONAL SIZES AND MATERIALS, CONTACT FACTORY

