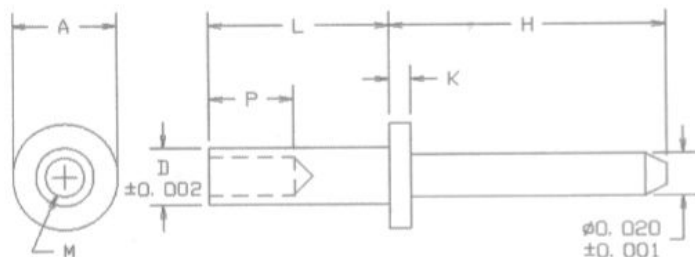


# P.C.PINS

## 09-8XXX-X-XX P.C.PINS .020 MATERIAL: BRASS

BASIC PART NO. FINISH

STANDARD FINISH (XX):  
(03)GOLD  
(05)ELECTRO-SOLDER



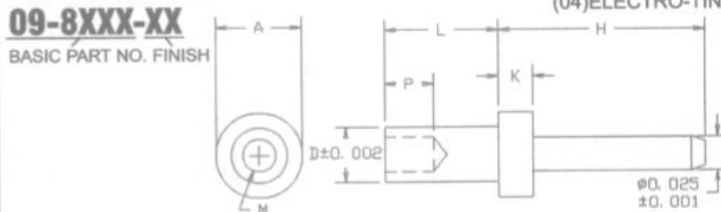
PART NO.	MOUNTING HOLE	TOOLS	
		ANVIL	PUNCH
09-8028	.031 DIA.(#68 DRILL)	TA50-20-10	TP30-20
09-8183	.035 DIA.(#65 DRILL)	TA50-20-10	TP30-20
09-8179	.039 DIA.(#61 DRILL)	TA50-20-50	TP40-25
09-8027	.031 DIA.(#68 DRILL)	TA50-20-10	TP30-20
09-8056	.031 DIA.(#68 DRILL)	TA50-20-10	TP30-20
09-8181	.035 DIA.(#65 DRILL)	TA50-20-10	TP30-20
09-8046	.043 DIA.(#57 DRILL)	TA62-20-25	TP40-25
09-8180	.039 DIA.(#61 DRILL)	TA50-20-20	TP40-25
09-8182	.035 DIA.(#65 DRILL)	TA50-20-10	TP30-20

PART NO.	H	L	D	A	K	M	P	BOARD THK.
09-8028-1-05	.050	.051	.027	.050	.010	.018	.040	1/32
-2-05	.050	.085	.027	.050	.010	.018	.040	1/16
09-8183-1-05	.125	.051	.031	.050	.010	.020	.040	1/32
09-8179-1-03	.125	.051	.036	.050	.050	.025	.040	1/32
09-8027-2-05	.130	.085	.027	.050	.010	.018	.040	1/16
09-8056-2-03	.160	.085	.027	.050	.010	.018	.040	1/16
09-8181-1-05	.225	.051	.031	.050	.010	.020	.040	1/32
09-8046-3-05	.275	.113	.040	.062	.025	.025	.035	3/32
09-8180-3-03	.350	.119	.036	.050	.020	.025	.045	3/32
09-8182-1-05	.375	.051	.031	.050	.010	.020	.040	1/32

## 10-9XX-X-XX .025 PINS MATERIAL: BRASS

BASIC PART NO. FINISH

STANDARD FINISH (XX):  
(03)GOLD  
(04)ELECTRO-TIN



PART NO.	MOUNTING HOLE	ANVIL	PUNCH
10-915	.043±.001 DIA.(#57 DRILL)	TA62-25-20	TP40-25
10-925	.062±.002 DIA.(1/16 DRILL)	TA78-25-30	TP62-44
10-8017	.035±.002 DIA.(#65 DRILL)	TA50-25-20	TP30-20
10-8018	.035±.002 DIA.(#65 DRILL)	TA50-25-20	TP30-20
10-8019	.035±.002 DIA.(#65 DRILL)	TA50-25-170	TP30-20
10-8176	.052±.002 DIA.(#55 DRILL)	TA62-25-20	TP50-33
10-8178	.052±.002 DIA.(#55 DRILL)	TA62-25-60	TP47-26
10-8020	.035±.002 DIA.(#65 DRILL)	TA50-25-420	TP30-20

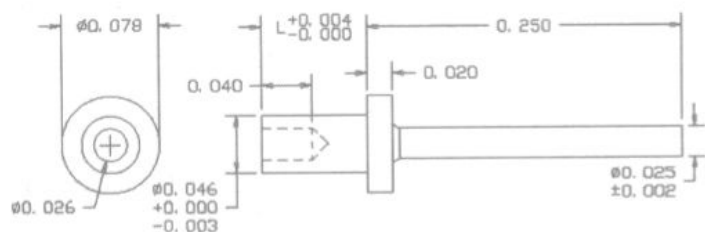
PART NO.	H	L	D	A	K	M	P	BOARD THK.
10-915-1-03	.150	.051	*.040	.062	.025	.025	.035	1/32
-2-03	.150	.082	*.040	.062	.025	.025	.035	1/16
-3-03	.150	.113	*.040	.062	.025	.025	.035	3/32
-3A-03	.150	.125	*.040	.062	.025	.025	.035	
10-925-1-XX	.155	.062	.058	.078	.030	.040	.040	1/32
-2-XX	.155	.094	.058	.078	.030	.040	.062	1/16
-3-XX	.155	.125	.058	.078	.030	.040	.062	3/32
-4-XX	.155	.156	.058	.078	.030	.040	.062	1/8
10-8017-1-03	.170	.051	†.031	.050	.020	.020	.040	1/32
-2-03	.170	.082	†.031	.050	.020	.020	.040	1/16
10-8018-1-03	.320	.051	†.031	.050	.020	.020	.040	1/32
-2-03	.320	.082	†.031	.050	.020	.020	.040	1/16
10-8019-1-03	.320	.051	†.031	.050	.170	.020	.040	1/32
-2-03	.320	.082	†.031	.050	.170	.020	.040	1/16
09-8176-1-03	.437	.054	.048	.062	.020	.032	.031	1/32
09-8178-2-03	.437	.094	.047	.062	.062	.032	.031	1/16
10-8020-1-03	.570	.051	†.031	.050	.420	.020	.031	1/32
-2-03	.570	.082	†.031	.050	.420	.020	.031	1/16

\*TOLERANCE IS ±.001 †TOLERANCE IS ±.0015

## 09-8172-2-03 P.C.PIN .025 MATERIAL: BRASS

BASIC PART NO. FINISH

STANDARD FINISH: GOLD



RECOMMENDED MOUNTING HOLE  
.0465 DIA.(#56 DRILL)

PART NO.	L	BOARD THK
09-8172-2-03	.084	1/16

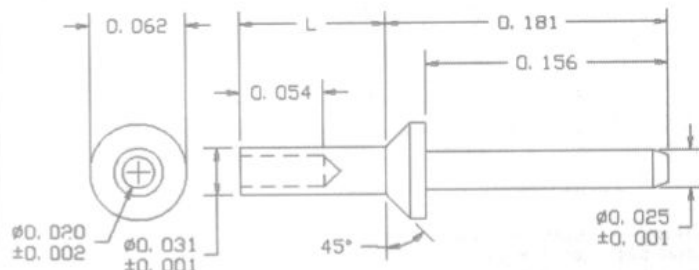
TOOLS

ANVIL	PUNCH
TA78-25-20	TP47-26

## 14-991-2-03 P.C.PIN .025 MATERIAL: RED LEADED BRASS

BASIC PART NO. FINISH

STANDARD FINISH: GOLD



RECOMMENDED MOUNTING HOLE .033 DIA.(#66 DRILL)

PART NO.	L	BOARD THK
14-991-2-03	.094	1/16

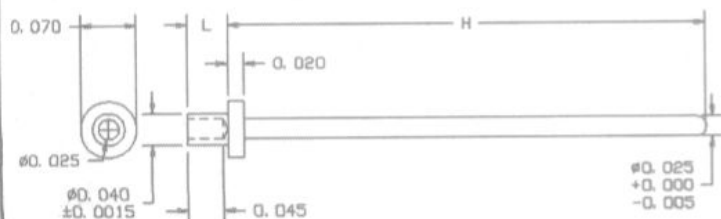
TOOLS

ANVIL	PUNCH
TA62-25-10	TP30-20

## 09-81XX-1-03 P.C.PIN .025 MATERIAL: BRASS

BASIC PART NO. FINISH

STANDARD FINISH: GOLD



RECOMMENDED MOUNTING HOLE .043 DIA.(#57 DRILL)

PART NO.	H	L	BOARD THK.
09-8173-1-03	.600	.051	1/32
09-8174-1-03	.900	.051	1/32

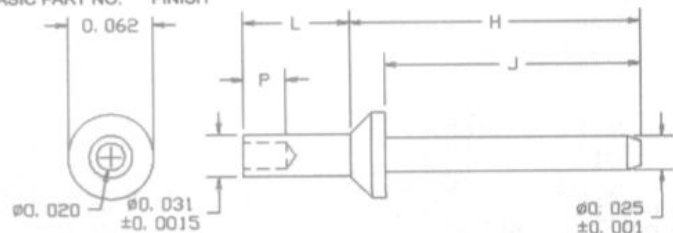
TOOLS

ANVIL	PUNCH
TA70-25-20	TP40-25

## 10-9XX-X-XX P.C.PIN .025 MATERIAL: BRASS

BASIC PART NO. FINISH

ANVIL	PUNCH
TA62-25-30	TP30-20



RECOMMENDED MOUNTING HOLE .035 DIA.(#65 DRILL)

PART NO.	H	L	J	P	BOARD THK.	STANDARD FINISH
10-984-2-04	.092	.082	.067	.062	1/16	(04)ELECTRO-TIN
10-927-1-XX	.213	.047	.188	.031	1/32	(03)GOLD or (04)ELECTRO-TIN
-2-XX	.213	.078	.188	.031	1/16	(04)ELECTRO-TIN
09-8170-2-04	.337	.078	.312	.031	1/16	(04)ELECTRO-TIN

FOR ADDITIONAL SIZES AND MATERIALS, CONTACT FACTORY

