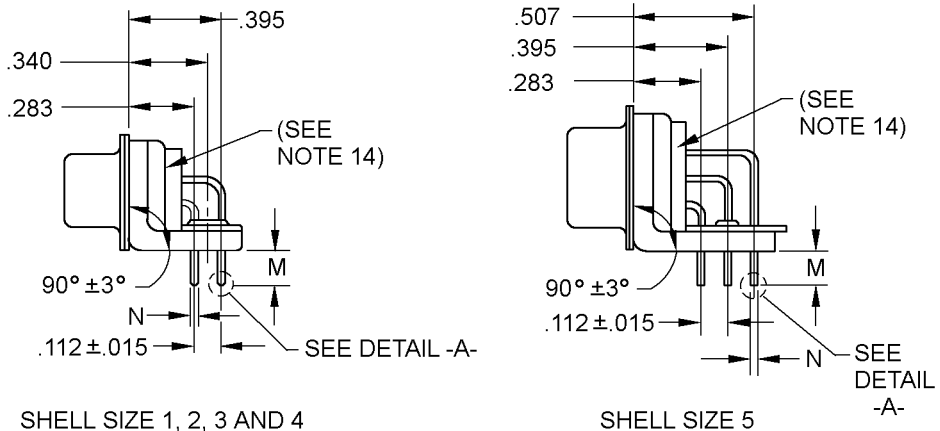


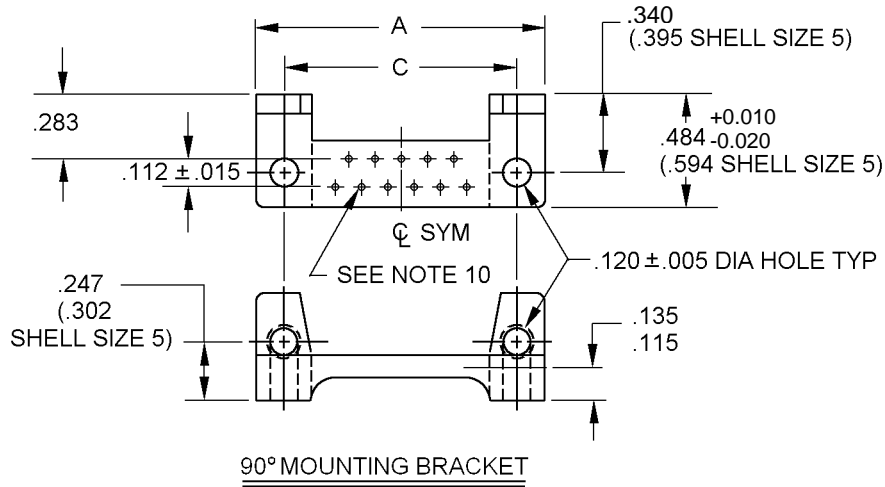


MIL-DTL-24308/23G  
w/AMENDMENT 5

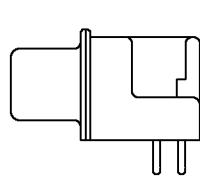


SHELL SIZE 1, 2, 3 AND 4

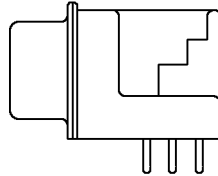
SHELL SIZE 5



90° MOUNTING BRACKET



SHELL SIZE 1, 2, 3, AND 4



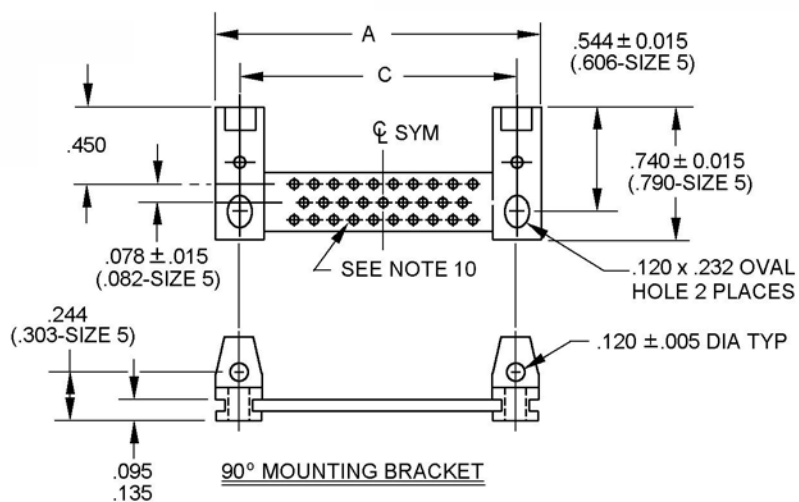
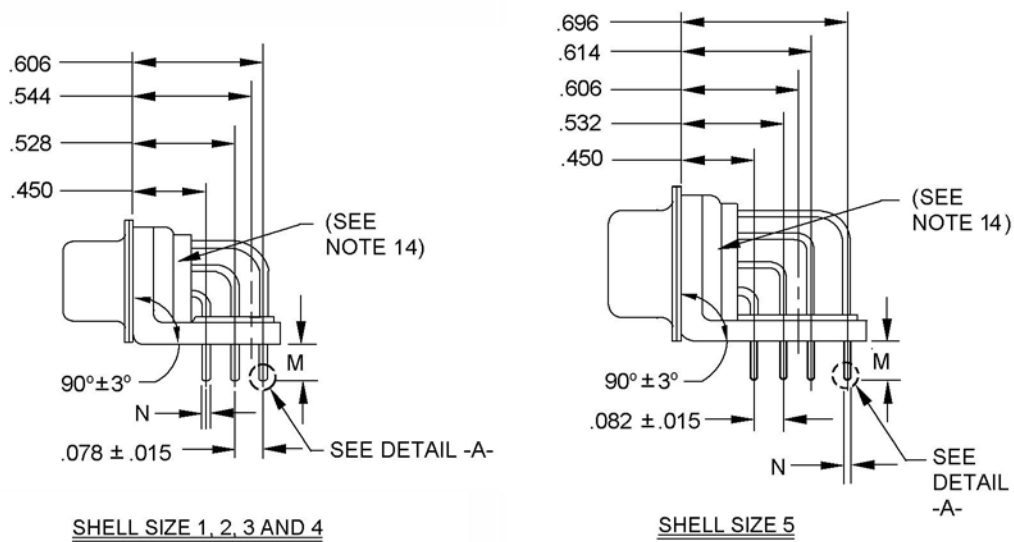
SHELL SIZE 5

ALTERNATE CONFIGURATION OF REAR INSERT & MOUNTING BRACKET

CONFIGURATION 3 - RIGHT ANGLE TAILS

FIGURE 1. Shell, receptacle, printed wiring board – Continued.

MIL-DTL-24308/23G  
w/AMENDMENT 5



CONFIGURATION 4 - RIGHT ANGLE TAILS

FIGURE 1. Shell, receptacle, printed wiring board – Continued.

MIL-DTL-24308/23G  
w/AMENDMENT 5

Dimensions and configurations

| Shell Size | A                | B                | C                | D               | E               | F               | G              | H                | J               | K              | L              |
|------------|------------------|------------------|------------------|-----------------|-----------------|-----------------|----------------|------------------|-----------------|----------------|----------------|
| 1          | 1.228<br>(31.19) | .648<br>(16.46)  | .989<br>(25.12)  | .316<br>(8.03)  | .509<br>(12.93) | .439<br>(11.15) | .248<br>(6.30) | .769<br>(19.53)  | .432<br>(10.97) | .060<br>(1.52) | .040<br>(1.02) |
|            | 1.198<br>(30.43) | .638<br>(16.21)  | .979<br>(24.87)  | .306<br>(7.77)  | .479<br>(12.17) | .419<br>(10.64) | .238<br>(6.05) | .749<br>(19.02)  | .412<br>(10.46) | .035<br>(0.89) | .020<br>(0.51) |
|            | 1.556<br>(39.52) | .976<br>(24.79)  | 1.317<br>(33.45) | .316<br>(8.03)  | .509<br>(12.93) | .439<br>(11.15) | .248<br>(6.30) | 1.093<br>(27.76) | .432<br>(10.97) | .060<br>(1.52) | .040<br>(1.02) |
| 2          | 1.526<br>(38.76) | .966<br>(24.54)  | 1.307<br>(33.20) | .306<br>(7.77)  | .479<br>(12.17) | .419<br>(10.64) | .238<br>(6.05) | 1.073<br>(27.25) | .412<br>(10.46) | .035<br>(0.89) | .020<br>(0.51) |
|            | 2.103<br>(53.42) | 1.516<br>(38.51) | 1.857<br>(47.17) | .316<br>(8.03)  | .509<br>(12.93) | .439<br>(11.15) | .248<br>(6.30) | 1.635<br>(41.53) | .432<br>(10.97) | .060<br>(1.52) | .049<br>(1.24) |
|            | 2.073<br>(52.65) | 1.506<br>(38.25) | 1.847<br>(46.91) | .306<br>(7.77)  | .479<br>(12.17) | .419<br>(10.64) | .238<br>(6.05) | 1.615<br>(41.02) | .412<br>(10.46) | .035<br>(0.89) | .029<br>(0.74) |
| 3          | 2.744<br>(69.70) | 2.164<br>(54.97) | 2.505<br>(63.63) | .316<br>(8.03)  | .509<br>(12.93) | .439<br>(11.15) | .248<br>(6.30) | 2.282<br>(57.96) | .432<br>(10.97) | .060<br>(1.52) | .049<br>(1.24) |
|            | 2.714<br>(68.94) | 2.154<br>(54.71) | 2.495<br>(63.37) | .306<br>(7.77)  | .479<br>(12.17) | .419<br>(10.64) | .238<br>(6.05) | 2.262<br>(57.45) | .412<br>(10.46) | .035<br>(0.89) | .029<br>(0.74) |
|            | 2.650<br>(67.31) | 2.069<br>(52.55) | 2.411<br>(61.24) | .428<br>(10.87) | .620<br>(15.75) | .439<br>(11.15) | .248<br>(6.30) | 2.188<br>(55.58) | .544<br>(13.82) | .060<br>(1.52) | .049<br>(1.24) |
| 4          | 2.620<br>(66.55) | 2.059<br>(52.30) | 2.401<br>(60.99) | .418<br>(10.62) | .590<br>(14.99) | .419<br>(10.64) | .238<br>(6.05) | 2.168<br>(55.07) | .524<br>(13.31) | .035<br>(0.89) | .029<br>(0.74) |
|            | 2.103<br>(53.42) | 1.516<br>(38.51) | 1.857<br>(47.17) | .316<br>(8.03)  | .509<br>(12.93) | .439<br>(11.15) | .248<br>(6.30) | 1.635<br>(41.53) | .432<br>(10.97) | .060<br>(1.52) | .049<br>(1.24) |
|            | 2.073<br>(52.65) | 1.506<br>(38.25) | 1.847<br>(46.91) | .306<br>(7.77)  | .479<br>(12.17) | .419<br>(10.64) | .238<br>(6.05) | 1.615<br>(41.02) | .412<br>(10.46) | .035<br>(0.89) | .029<br>(0.74) |
| 5          | 2.744<br>(69.70) | 2.164<br>(54.97) | 2.505<br>(63.63) | .316<br>(8.03)  | .509<br>(12.93) | .439<br>(11.15) | .248<br>(6.30) | 2.282<br>(57.96) | .432<br>(10.97) | .060<br>(1.52) | .049<br>(1.24) |
|            | 2.714<br>(68.94) | 2.154<br>(54.71) | 2.495<br>(63.37) | .306<br>(7.77)  | .479<br>(12.17) | .419<br>(10.64) | .238<br>(6.05) | 2.262<br>(57.45) | .412<br>(10.46) | .035<br>(0.89) | .029<br>(0.74) |
|            | 2.650<br>(67.31) | 2.069<br>(52.55) | 2.411<br>(61.24) | .428<br>(10.87) | .620<br>(15.75) | .439<br>(11.15) | .248<br>(6.30) | 2.188<br>(55.58) | .544<br>(13.82) | .060<br>(1.52) | .049<br>(1.24) |
| 5          | 2.620<br>(66.55) | 2.059<br>(52.30) | 2.401<br>(60.99) | .418<br>(10.62) | .590<br>(14.99) | .419<br>(10.64) | .238<br>(6.05) | 2.168<br>(55.07) | .524<br>(13.31) | .035<br>(0.89) | .029<br>(0.74) |

Application data and dimensions.

| Applicable dash number M24308/23 | Applicable Configurations | Applicable board thickness | Nominal pin diameter | M              | N              |
|----------------------------------|---------------------------|----------------------------|----------------------|----------------|----------------|
| -1 through -5<br>(See note 15)   | 1 and 2                   | .094 (2.39 mm)             | .030 (0.76 mm)       | .185 (4.70 mm) | .033 (0.84 mm) |
|                                  |                           |                            |                      | .130 (3.30 mm) | .027 (0.69 mm) |
| -7 through -11<br>(See note 15)  | 1 and 2                   | .125 (3.18 mm)             | .030 (0.76 mm)       | .210 (5.33 mm) | .033 (0.84 mm) |
|                                  |                           |                            |                      | .155 (3.94 mm) | .027 (0.69 mm) |
| -13 through -17<br>(See note 15) | 1 and 2                   | .094 (2.39 mm)             | .040 (1.02 mm)       | .185 (4.70 mm) | .043 (1.09 mm) |
|                                  |                           |                            |                      | .130 (3.30 mm) | .037 (0.94 mm) |
| -19 through -23<br>(See note 15) | 1 and 2                   | .125 (3.18 mm)             | .040 (1.02 mm)       | .210 (5.33 mm) | .043 (1.09 mm) |
|                                  |                           |                            |                      | .155 (3.94 mm) | .037 (0.94 mm) |
| -25 through -29<br>(See note 15) | 1 and 3                   | .062 (1.57 mm)             | .030 (0.76 mm)       | .154 (3.91 mm) | .033 (0.84 mm) |
|                                  |                           |                            |                      | .099 (2.51 mm) | .027 (0.69 mm) |
| -31 through -35<br>(See note 15) | 1 and 3                   | .094 (2.39 mm)             | .030 (0.76 mm)       | .185 (4.70 mm) | .033 (0.84 mm) |
|                                  |                           |                            |                      | .130 (3.30 mm) | .027 (0.69 mm) |
| -37 through -41<br>(See note 15) | 1 and 3                   | .062 (1.57 mm)             | .040 (1.02 mm)       | .154 (3.91 mm) | .043 (1.09 mm) |
|                                  |                           |                            |                      | .099 (2.51 mm) | .037 (0.94 mm) |
| -43 through -47<br>(See note 15) | 1 and 3                   | .094 (2.39 mm)             | .040 (1.02 mm)       | .185 (4.70 mm) | .043 (1.09 mm) |
|                                  |                           |                            |                      | .130 (3.30 mm) | .037 (0.94 mm) |
| -49 through -53<br>(See note 15) | 1 and 3                   | .125 (3.18 mm)             | .030 (0.76 mm)       | .210 (5.33 mm) | .033 (0.84 mm) |
|                                  |                           |                            |                      | .155 (3.94 mm) | .027 (0.69 mm) |
| -55 through -59<br>(See note 15) | 1 and 3                   | .125 (3.18 mm)             | .040 (1.02 mm)       | .210 (5.33 mm) | .043 (1.09 mm) |
|                                  |                           |                            |                      | .155 (3.94 mm) | .037 (0.94 mm) |
| -61 through -65<br>(See note 15) | 1 and 2                   | .094 (2.39 mm)             | .020 (0.51 mm)       | .185 (4.70 mm) | .023 (0.58 mm) |
|                                  |                           |                            |                      | .130 (3.30 mm) | .017 (0.43 mm) |
| -67 through -71<br>(See note 15) | 1 and 2                   | .125 (3.18 mm)             | .020 (0.51 mm)       | .320 (8.13 mm) | .023 (0.58 mm) |
|                                  |                           |                            |                      | .275 (6.99 mm) | .017 (0.43 mm) |
| -73 through -77<br>(See note 15) | 1 and 4                   | .062 (1.57 mm)             | .020 (0.51 mm)       | .154 (3.91 mm) | .023 (0.58 mm) |
|                                  |                           |                            |                      | .099 (2.51 mm) | .017 (0.43 mm) |

FIGURE 1. Shell, receptacle, printed wiring board type - Continued.

MIL-DTL-24308/23G  
w/AMENDMENT 5

| Inches | mm   | Inches | mm   | Inches | mm    |
|--------|------|--------|------|--------|-------|
| .005   | 0.13 | .092   | 2.34 | .247   | 6.27  |
| .010   | 0.25 | .097   | 2.46 | .251   | 6.38  |
| .015   | 0.38 | .103   | 2.62 | .283   | 7.19  |
| .030   | 0.76 | .112   | 2.84 | .302   | 7.67  |
| .040   | 1.02 | .115   | 2.92 | .340   | 8.64  |
| .041   | 1.04 | .120   | 3.05 | .395   | 10.03 |
| .062   | 1.57 | .125   | 3.18 | .484   | 12.29 |
| .065   | 1.65 | .135   | 3.43 | .507   | 12.88 |
| .070   | 1.78 | .149   | 3.78 | .594   | 15.09 |

NOTES:

1. Dimensions are in inches.
2. Metric equivalents are given for information only.
3. Socket contact shall accommodate .041/.039 (1.04/0.99 mm) diameter pin for size 20 contacts and .0305/.0295 (.775/.749 mm) diameter pin for size 22D contacts.
4. Point of electrical engagement. Use .0393/.0390 (0.998/0.990 mm) diameter square ended test pin.
5. Applicable insert patterns see MIL-DTL-24308, appendix A.
6. Copyright notice. All information disclosed in this military specification sheet which is or may be copyrighted by ITT Cannon Electric is reproduced herein with the expressed permission of the copyright owner.
7. The 90 ° bracket shall be one piece flame resistant glass-filled nylon, polyester or two piece metal and nylon of which the metal pieces shall be coated with a material in accordance with IPC-CC-830.
8. The 90 ° bracket shall be furnished as an integral part of the connector assembly.
9. Spacers will be supplied with connectors (not attached to the connector).
10. Layout shown for reference only to locate C<sub>L</sub>. See applicable insert arrangement.
11. Unless otherwise specified, tolerance is ± .010 inch (0.25 mm).
12. In the event of a conflict between the text of this specification sheet and the references cited herein, the text of this specification sheet shall take precedence.
13. Referenced Governments documents of the issue listed in ASSIST Online database at <https://assist.dla.mil/> specified in the solicitation form a part of this standard to the extent specified herein.
14. Indentation on the ends of the termination side of the shell, for the purpose of securing the insulator in the shell, is permitted. This may result in the "F" dimension being undersized in these areas. However the "F" dimension shall be maintained for the remainder of the connector.
15. For classes M, N and D use table I for applicable dash numbers.

FIGURE 1. Shell, receptacle, printed wiring board type - Continued.

MIL-DTL-24308/23G  
w/AMENDMENT 5

REQUIREMENTS:

The connectors shall conform to figure 1 and the specification Part or Identifying Numbers (PIN) indicated in table I.

TABLE I. Design standards. 1/

| PIN<br>Class G | PIN<br>Class M | PIN<br>Class N | PIN<br>Class D | Shell<br>size | Shell<br>detail<br>configurations | Insert<br>arrangement<br>reference<br>number 2/ | Contact       |             |
|----------------|----------------|----------------|----------------|---------------|-----------------------------------|---|---------------|-------------|
|                |                |                |                |               |                                   |   | Mating<br>end | PWB<br>tail |
| M24308/23-1    | M24308/23-101  | M24308/23-201  | M24308/23-301  | 1             | 1 and 2                           | A-1-1   | Size 20       | Straight    |
| M24308/23-2    | M24308/23-102  | M24308/23-202  | M24308/23-302  | 2             | 1 and 2                           | A-2-1   | Size 20       | Straight    |
| M24308/23-3    | M24308/23-103  | M24308/23-203  | M24308/23-303  | 3             | 1 and 2                           | A-3-1   | Size 20       | Straight    |
| M24308/23-4    | M24308/23-104  | M24308/23-204  | M24308/23-304  | 4             | 1 and 2                           | A-4-1   | Size 20       | Straight    |
| M24308/23-5    | M24308/23-105  | M24308/23-205  | M24308/23-305  | 5             | 1 and 2                           | A-5-1   | Size 20       | Straight    |
| M24308/23-7    | M24308/23-107  | M24308/23-207  | M24308/23-307  | 1             | 1 and 2                           | A-1-1   | Size 20       | Straight    |
| M24308/23-8    | M24308/23-108  | M24308/23-208  | M24308/23-308  | 2             | 1 and 2                           | A-2-1   | Size 20       | Straight    |
| M24308/23-9    | M24308/23-109  | M24308/23-209  | M24308/23-309  | 3             | 1 and 2                           | A-3-1   | Size 20       | Straight    |
| M24308/23-10   | M24308/23-110  | M24308/23-210  | M24308/23-310  | 4             | 1 and 2                           | A-4-1   | Size 20       | Straight    |
| M24308/23-11   | M24308/23-111  | M24308/23-211  | M24308/23-311  | 5             | 1 and 2                           | A-5-1   | Size 20       | Straight    |
| M24308/23-13   | M24308/23-113  | M24308/23-213  | M24308/23-313  | 1             | 1 and 2                           | A-1-1   | Size 20       | Straight    |
| M24308/23-14   | M24308/23-114  | M24308/23-214  | M24308/23-314  | 2             | 1 and 2                           | A-2-1   | Size 20       | Straight    |
| M24308/23-15   | M24308/23-115  | M24308/23-215  | M24308/23-315  | 3             | 1 and 2                           | A-3-1   | Size 20       | Straight    |
| M24308/23-16   | M24308/23-116  | M24308/23-216  | M24308/23-316  | 4             | 1 and 2                           | A-4-1   | Size 20       | Straight    |
| M24308/23-17   | M24308/23-117  | M24308/23-217  | M24308/23-317  | 5             | 1 and 2                           | A-5-1   | Size 20       | Straight    |
| M24308/23-19   | M24308/23-119  | M24308/23-219  | M24308/23-319  | 1             | 1 and 2                           | A-1-1   | Size 20       | Straight    |
| M24308/23-20   | M24308/23-120  | M24308/23-220  | M24308/23-320  | 2             | 1 and 2                           | A-2-1   | Size 20       | Straight    |
| M24308/23-21   | M24308/23-121  | M24308/23-221  | M24308/23-321  | 3             | 1 and 2                           | A-3-1   | Size 20       | Straight    |
| M24308/23-22   | M24308/23-122  | M24308/23-222  | M24308/23-322  | 4             | 1 and 2                           | A-4-1   | Size 20       | Straight    |
| M24308/23-23   | M24308/23-123  | M24308/23-223  | M24308/23-323  | 5             | 1 and 2                           | A-5-1   | Size 20       | Straight    |
| M24308/23-25   | M24308/23-125  | M24308/23-225  | M24308/23-325  | 1             | 1 and 3                           | A-1-1   | Size 20       | Rt Angle    |
| M24308/23-26   | M24308/23-126  | M24308/23-226  | M24308/23-326  | 2             | 1 and 3                           | A-2-1   | Size 20       | Rt Angle    |
| M24308/23-27   | M24308/23-127  | M24308/23-227  | M24308/23-327  | 3             | 1 and 3                           | A-3-1   | Size 20       | Rt Angle    |
| M24308/23-28   | M24308/23-128  | M24308/23-228  | M24308/23-328  | 4             | 1 and 3                           | A-4-1   | Size 20       | Rt Angle    |
| M24308/23-29   | M24308/23-129  | M24308/23-229  | M24308/23-329  | 5             | 1 and 3                           | A-5-1   | Size 20       | Rt Angle    |
| M24308/23-31   | M24308/23-131  | M24308/23-231  | M24308/23-331  | 1             | 1 and 3                           | A-1-1   | Size 20       | Rt Angle    |
| M24308/23-32   | M24308/23-132  | M24308/23-232  | M24308/23-332  | 2             | 1 and 3                           | A-2-1   | Size 20       | Rt Angle    |
| M24308/23-33   | M24308/23-133  | M24308/23-233  | M24308/23-333  | 3             | 1 and 3                           | A-3-1   | Size 20       | Rt Angle    |
| M24308/23-34   | M24308/23-134  | M24308/23-234  | M24308/23-334  | 4             | 1 and 3                           | A-4-1   | Size 20       | Rt Angle    |
| M24308/23-35   | M24308/23-135  | M24308/23-235  | M24308/23-335  | 5             | 1 and 3                           | A-5-1   | Size 20       | Rt Angle    |
| M24308/23-37   | M24308/23-137  | M24308/23-237  | M24308/23-337  | 1             | 1 and 3                           | A-1-1   | Size 20       | Rt Angle    |
| M24308/23-38   | M24308/23-138  | M24308/23-238  | M24308/23-338  | 2             | 1 and 3                           | A-2-1   | Size 20       | Rt Angle    |
| M24308/23-39   | M24308/23-139  | M24308/23-239  | M24308/23-339  | 3             | 1 and 3                           | A-3-1   | Size 20       | Rt Angle    |
| M24308/23-40   | M24308/23-140  | M24308/23-240  | M24308/23-340  | 4             | 1 and 3                           | A-4-1   | Size 20       | Rt Angle    |
| M24308/23-41   | M24308/23-141  | M24308/23-241  | M24308/23-341  | 5             | 1 and 3                           | A-5-1   | Size 20       | Rt Angle    |
| M24308/23-43   | M24308/23-143  | M24308/23-243  | M24308/23-343  | 1             | 1 and 3                           | A-1-1   | Size 20       | Rt Angle    |
| M24308/23-44   | M24308/23-144  | M24308/23-244  | M24308/23-344  | 2             | 1 and 3                           | A-2-1   | Size 20       | Rt Angle    |
| M24308/23-45   | M24308/23-145  | M24308/23-245  | M24308/23-345  | 3             | 1 and 3                           | A-3-1   | Size 20       | Rt Angle    |
| M24308/23-46   | M24308/23-146  | M24308/23-246  | M24308/23-346  | 4             | 1 and 3                           | A-4-1   | Size 20       | Rt Angle    |
| M24308/23-47   | M24308/23-147  | M24308/23-247  | M24308/23-347  | 5             | 1 and 3                           | A-5-1   | Size 20       | Rt Angle    |

See footnotes at end of table.

MIL-DTL-24308/23G  
w/AMENDMENT 5

TABLE I. Design standards - Continued. 1/

| PIN<br>Class G | PIN<br>Class M | PIN<br>Class N | PIN<br>Class D | Shell<br>size | Shell<br>detail<br>configurations | Insert<br>arrangement<br>reference<br>number <u>2/</u> | Contact       |             |
|----------------|----------------|----------------|----------------|---------------|-----------------------------------|--|---------------|-------------|
|                |                |                |                |               |                                   |  | Mating<br>end | PWB<br>tail |
| M24308/23-49   | M24308/23-149  | M24308/23-249  | M24308/23-349  | 1             | 1 and 3                           | A-1-1  | Size 20       | Rt Angle    |
| M24308/23-50   | M24308/23-150  | M24308/23-250  | M24308/23-350  | 2             | 1 and 3                           | A-2-1  | Size 20       | Rt Angle    |
| M24308/23-51   | M24308/23-151  | M24308/23-251  | M24308/23-351  | 3             | 1 and 3                           | A-3-1  | Size 20       | Rt Angle    |
| M24308/23-52   | M24308/23-152  | M24308/23-252  | M24308/23-352  | 4             | 1 and 3                           | A-4-1  | Size 20       | Rt Angle    |
| M24308/23-53   | M24308/23-153  | M24308/23-253  | M24308/23-353  | 5             | 1 and 3                           | A-5-1  | Size 20       | Rt Angle    |
| M24308/23-55   | M24308/23-155  | M24308/23-255  | M24308/23-355  | 1             | 1 and 3                           | A-1-1  | Size 20       | Rt Angle    |
| M24308/23-56   | M24308/23-156  | M24308/23-256  | M24308/23-356  | 2             | 1 and 3                           | A-2-1  | Size 20       | Rt Angle    |
| M24308/23-57   | M24308/23-157  | M24308/23-257  | M24308/23-357  | 3             | 1 and 3                           | A-3-1  | Size 20       | Rt Angle    |
| M24308/23-58   | M24308/23-158  | M24308/23-258  | M24308/23-358  | 4             | 1 and 3                           | A-4-1  | Size 20       | Rt Angle    |
| M24308/23-59   | M24308/23-159  | M24308/23-259  | M24308/23-359  | 5             | 1 and 3                           | A-5-1  | Size 20       | Rt Angle    |
| M24308/23-61   | M24308/23-161  | M24308/23-261  | M24308/23-361  | 1             | 1 and 2                           | A-1-2  | Size 22       | Straight    |
| M24308/23-62   | M24308/23-162  | M24308/23-262  | M24308/23-362  | 2             | 1 and 2                           | A-2-2  | Size 22       | Straight    |
| M24308/23-63   | M24308/23-163  | M24308/23-263  | M24308/23-363  | 3             | 1 and 2                           | A-3-2  | Size 22       | Straight    |
| M24308/23-64   | M24308/23-164  | M24308/23-264  | M24308/23-364  | 4             | 1 and 2                           | A-4-2  | Size 22       | Straight    |
| M24308/23-65   | M24308/23-165  | M24308/23-265  | M24308/23-365  | 5             | 1 and 2                           | A-5-2  | Size 22       | Straight    |
| M24308/23-67   | M24308/23-167  | M24308/23-267  | M24308/23-367  | 1             | 1 and 2                           | A-1-2  | Size 22       | Straight    |
| M24308/23-68   | M24308/23-168  | M24308/23-268  | M24308/23-368  | 2             | 1 and 2                           | A-2-2  | Size 22       | Straight    |
| M24308/23-69   | M24308/23-169  | M24308/23-269  | M24308/23-369  | 3             | 1 and 2                           | A-3-2  | Size 22       | Straight    |
| M24308/23-70   | M24308/23-170  | M24308/23-270  | M24308/23-370  | 4             | 1 and 2                           | A-4-2  | Size 22       | Straight    |
| M24308/23-71   | M24308/23-171  | M24308/23-271  | M24308/23-371  | 5             | 1 and 2                           | A-5-2  | Size 22       | Straight    |
| M24308/23-73   | M24308/23-173  | M24308/23-273  | M24308/23-373  | 1             | 1 and 4                           | A-1-2  | Size 22       | Rt Angle    |
| M24308/23-74   | M24308/23-174  | M24308/23-274  | M24308/23-374  | 2             | 1 and 4                           | A-2-2  | Size 22       | Rt Angle    |
| M24308/23-75   | M24308/23-175  | M24308/23-275  | M24308/23-375  | 3             | 1 and 4                           | A-3-2  | Size 22       | Rt Angle    |
| M24308/23-76   | M24308/23-176  | M24308/23-276  | M24308/23-376  | 4             | 1 and 4                           | A-4-2  | Size 22       | Rt Angle    |
| M24308/23-77   | M24308/23-177  | M24308/23-277  | M24308/23-377  | 5             | 1 and 4                           | A-5-2  | Size 22       | Rt Angle    |

1/ These connectors mate with connectors specified in MIL-DTL-24308/3, MIL-DTL-24308/4, MIL-DTL-24308/6, and MIL-DTL-24308/24.

2/ For insert arrangements see MIL-DTL-24308, Appendix A.

NOTE: Qualification by similarity: Qualification of connectors of one shell size of one configuration with a specific printed wiring tail length and diameter shall qualify all connectors of the same shell size and configuration with all other printed wiring tail lengths and diameters.

Contact retention: Not applicable.

