

**SERIES 40-5 WEDGE-LOK**

**DSCC 89064 & CID 59789**

**RECOMMENDED GAP WIDTH**

PCB + 7.62 (.300)

**RECOMMENDED TORQUE**

80 N-cm (7 in-lbs)

**WEIGHT**

1.16 g/cm (.104 oz/in)

**MATERIALS AND FINISH**

**WEDGES**

**Material:** Aluminum Alloy 6061-T6 per QQ-A-200/8

**Finish:** See finish table on opposite page

**SCREW**

.09-in. or 2.5-mm hex. socket head cap screw, depending on mounting configuration

**Material:** 300 series stainless steel per QQ-S-763 ASTM A-582 A286 per FF-S-86 with dry film lube per MIL-L-46010 for "TLC" option

**Finish:** Passivated per AMS2700

**ALIGNMENT SPRINGS**

**Material:** 301 stainless steel half hard per AMS 5518

**Finish:** Passivated per AMS2700

**OPTIONAL LOCK AND FLAT WASHER**

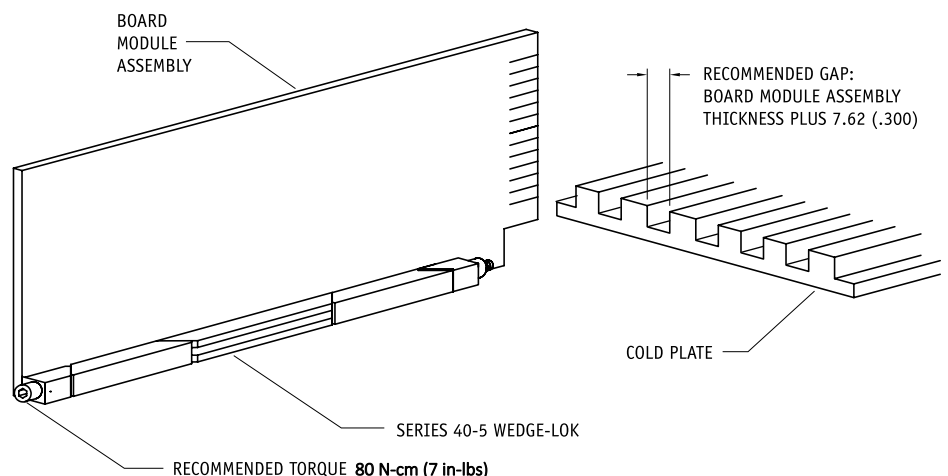
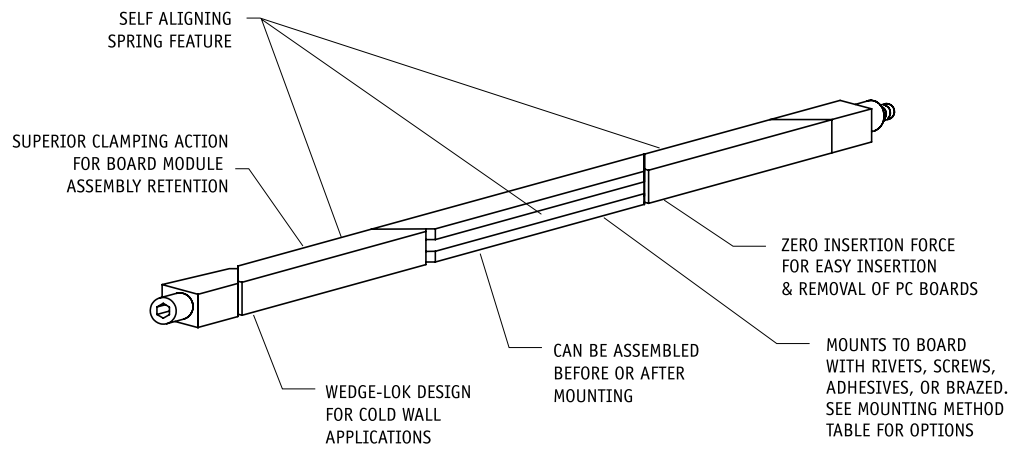
**Material:** 300 series stainless steel per QQ-S-763 and ASTM A-582

**Finish:** Passivated per AMS2700

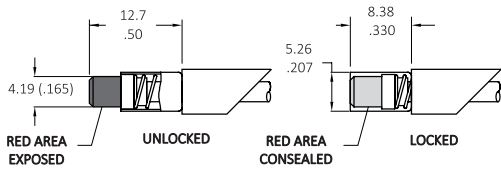
**OPTIONAL LOCKNUT**

**Material:** Type A286 stainless steel per ASTM AMS 5525

**Finish:** Silver plate per AMS 2410

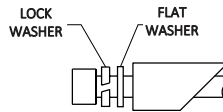


# SERIES 40-5 WEDGE LOK



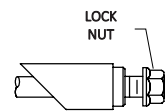
### VI OPTION

Indicates assembly is unlocked (adds 5.1 (.20) to screw length)



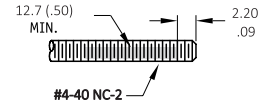
### LF OPTION

Provides additional resistance to shock and vibration (adds 2.5 (.10) in screw length)



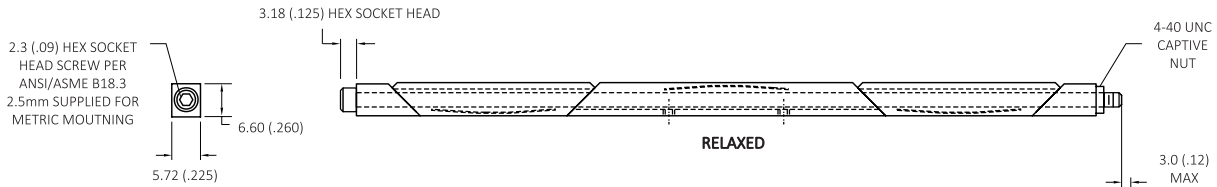
### LN OPTION

Captivates rear wedge when untorqued (adds 2.5 (.10) to screw length)



### LOPTION

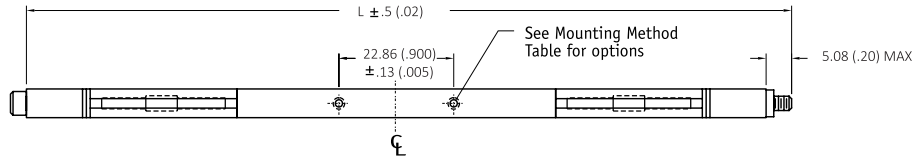
Provides additional resistance to shock and vibration



Units: mm(in)  
unless specified otherwise,  
.xx = ± .25, .x = ± .5  
(.xxx = ± .010, .xx = ± .02)

### MOUNTING HOLE LOCATION

22.86 (.900) hole spacing centered on mounting body  
-10 thru -13 2 holes  
-14 thru -24 4 holes



### FINISH TABLE

CODE LETTER	SURFACE FINISH
[blank]	CHEMICAL FILM PER MIL-DTL-5541, TYPE I, CLASS 1A, GOLD, NON ROHS COMPLIANT
CC	CHEMICAL FILM PER MIL-DTL-5541, TYPE II, CLASS 1A, CLEAR
EN	ELECTROLESS NICKEL PER MIL-C-26074, CLASS 4, GRADE B, BRIGHT
N	NICKEL PLATE PER QQ-N-290, CLASS 1, GRADE G, BRIGHT
B	BLACK ANODIZE PER MIL-A-8625, TYPE II, CLASS 2
B3	HARD BLACK ANODIZE PER MIL-A-8625, TYPE III, CLASS 2
B3D	HARD BLACK ANODIZE WITH DRY FILM LUBE PER MIL-L-46010

### MOUNTING METHOD TABLE

CODE LETTER	METHOD
[blank]	2-56 UNC-2B TAPPED HOLE
R	RIVET MOUNT (Ø 1.70 + .10/-0.03 (.067 + .004/.001) THRU □ Ø3.96 (.156) ∇ 5.08 (.200) √ Ø 3.56 (.140) x 100°) RIVET "R" PARTS ARE SHIPPED UNASSEMBLED AND EXCLUDE ALIGNMENT PINS
A	NO MOUNTING HOLES
T	0-80 UNF-2B TAPPED HOLE
M2	M2 X .40 TAPPED HOLE
M	M2.5 X .45 TAPPED HOLE

\*NOTE: FOR TORQUE LIMITING (TLC) VERSION:  
VISUAL INDICATOR (VI), LOCK/FLAT WASHER (LF) NOT AVAILABLE  
ONE ALIGNMENT SPRING FOR -10 TO -15 LENGTHS  
MUST CLICK 3+ TIMES FOR PROPER INSTALLATION

Part Number Code	40-5	VI	-	10	-	B	-	LF	-	LN	-	T	-	L
<b>Type</b>														
Torque Limiting Version* _____														
Standard version with Visual Indicator _____		VI												
Standard version _____		[Blank]												
<b>Length</b>														
Length in 12.7 (.50) increments _____				10										
_____				to 24										
<b>Finish</b>														
BlackAnodized _____						B								
Or select code letter from Finish Table														
<b>Lock/Flat Washers and Locknut</b>														
Lock Washer and Flat Washer _____								LF						
None _____								[Blank]						
Lock Nut _____										LN				
None _____										[Blank]				
<b>Mounting</b>														
Standard 2-56 UNC-2B tapped holes _____														[Blank]
or choose from Mounting Method Table														
<b>Lock Patch</b>														
Lock Patch _____														L
None _____														[Blank]



**SCHROFF**