



**SERIES 35-6 PCB TAINER**

**WEIGHT**

.37g/cm (.033 oz/in)

**MATERIALS AND FINISH**

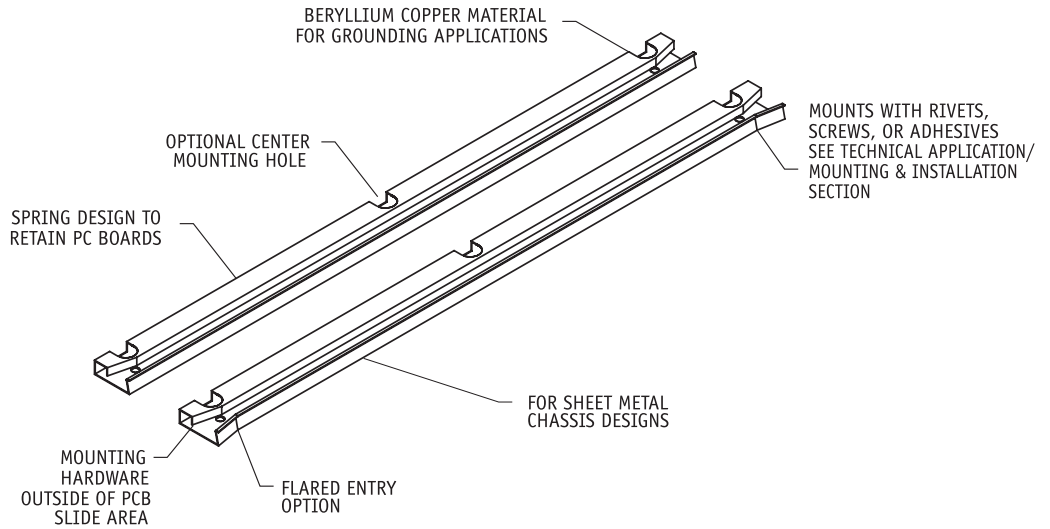
**HOUSING**

**Material:**

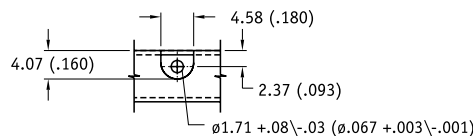
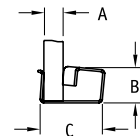
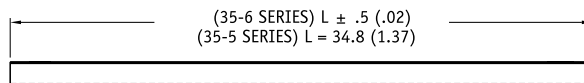
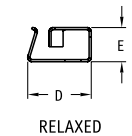
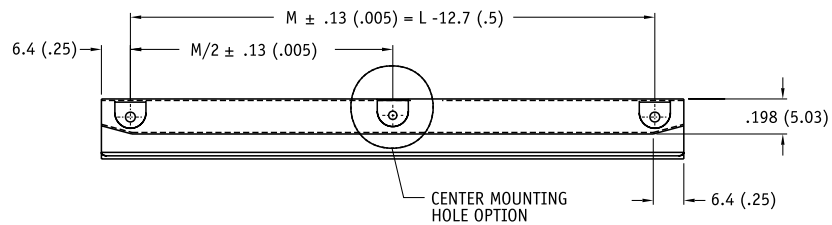
.008-in. (.20-mm) thick  
Beryllium Copper per  
ASTM B-194 or Stainless  
Steel per ASTM A-366

**Finish:**

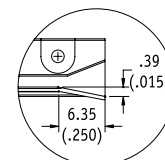
See finish table on  
opposite page



Units: mm(in)  
unless specified otherwise,  
.xx = ± .25, .x = ± .5  
(.xxx = ±.010, .xx = ± .02)



MOUNTING HOLE DETAIL



FLARED ENTRY OPTION DETAIL

MATERIALS TABLE

CODE LETTER	MATERIAL
B	BERYLLIUM COPPER, 1/4H PER ASTM-B-194
BH	BERYLLIUM COPPER, 1/4HT PER QQ-C-533, HEAT TREATED
CR	STAINLESS STEEL, TYPE 301 COND 1/4 H PER AMS 5517

DIMENSION TABLE

DASH #	A	B	C MAX	D	E
-1	0.79 (.031)	4.58 (.180)	8.39 (.330)	7.57 (.298)	3.97 (.156)
-2	1.59 (.063)	4.58 (.180)	8.39 (.330)	7.57 (.298)	3.97 (.156)
-3	2.38 (.094)	4.58 (.180)	8.39 (.330)	7.57 (.298)	3.97 (.156)
-4	3.18 (.125)	4.58 (.180)	9.40 (.370)	8.39 (.330)	3.97 (.156)

FINISH TABLE

DASH #	DESCRIPTION
[blank]	SILVER PLATE PER QQ-S-365, TYPE III, GRADE A
-1	NONE
-2	EBANOL PER MIL-F-495 FOR BERYLLIUM COPPER PER MIL-C-13924 FOR STEEL
-3	CADMIUM PER QQ-P-416, TYPE 2, CLASS 2
-4	COPPER PLATE PER MIL-C-14550, CLASS 2
-5	GOLD PLATE PER MIL-G-45204, TYPE 1, GLASS 1
-6	NICKEL PLATE PER QQ-N-290, CLASS 1, GRADE G, BRIGHT
-7	ZINC PLATE CLEAR CHROMATE, PER ASTM-B-633, Fe/Zn 8
-8	ZINC PLATE YELLOW CHROMATE, PER ASTM-B-633, Fe/Zn 8

**Part Number Code**

Series 35-6 PCB 35 C F -6 B -2 -10 -5

**Center Mounting Hole**  
Center Mounting Hole \_\_\_\_\_ C  
None \_\_\_\_\_ [Blank]

**Flared Entry**  
Flared Entry: \_\_\_\_\_ F  
None: \_\_\_\_\_ [Blank]

**Material**  
Beryllium Copper \_\_\_\_\_ B  
or select from Materials Table

**Board Thickness**  
1.59 (.063) PCB Thickness \_\_\_\_\_ 2  
or select from Board Thickness Table

**Length**  
Length in 12.7 (.50) increments \_\_\_\_\_ 4 [50.8 (2.00)]  
\_\_\_\_\_ to 12 [152.4 (6.00)]

**Finish**  
Gold Plate \_\_\_\_\_ 5  
or select from Finish Table

No dash number required for CR material. Stainless steel parts are passivated only.

Part Number Code examples: 35F-6B-3-10-6

35 Series PCB-TAINER, Beryllium Copper with Flared Entry, 2.38-mm (.094-in.) thick board, 127.0-mm (5.00-in.) long, nickel plate finish.

