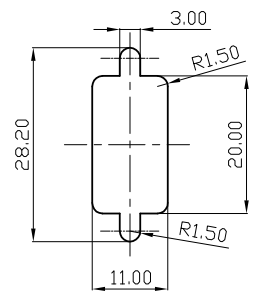
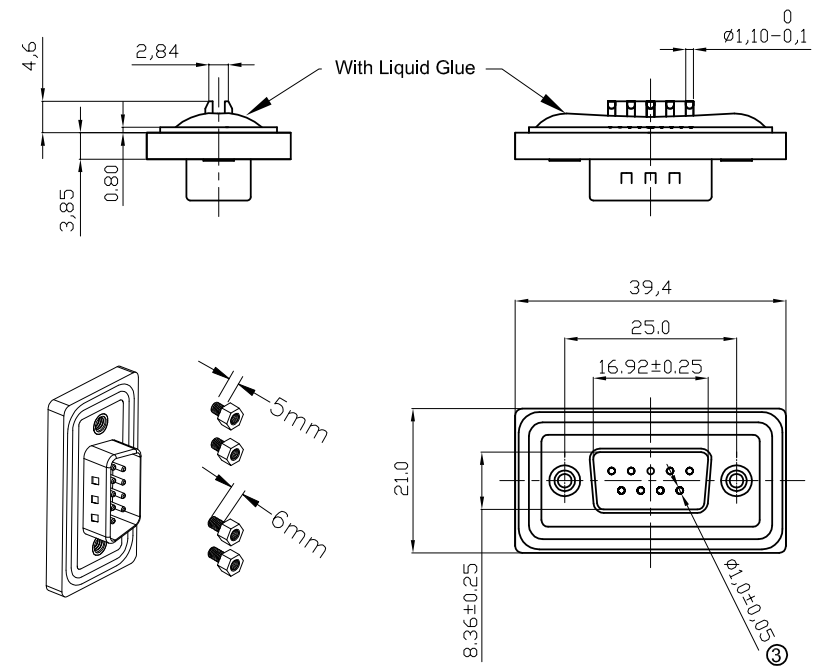


Panel Thickness  
 Screw L=5.0 For Panel Thickness Under 1.2mm  
 Screw L=6.0 For Panel Thickness Between 1.2-2.0mm



Recommended Panel Cut-Out



**NOTES:**

**MATERIAL**

1. Insulator Material: Black, NYLON+G/F UL94V-0 ③
2. Contact Material: Copper Alloy
- ③ 3. Plating: 1u" Gold Plating
4. Waterproof Rate: IP67
5. Applicable Wire Range: 22AWG-26AWG
6. Do Mating Test After Glued
7. Screw: copper Alloy, Nickel Plated, #4-40 UNC.

**③ Electrical**

1. Contact resistance: 20mΩ max.
2. Insulation resistance: 500MΩ min. at DC500V
3. Dielectric withstanding voltage: 500V AC  
1 minute
4. Rating current: 2A
5. Durability: 500 cycles
6. Temperature range: -20°C ~ +85°C

**RoHS compliant**  
 Unit: mm

Scale	Free					Date	Name	Customer-No.
TOLERANCE						Drawn	18.12.2008	JACK
X.X	±0.25					Approved	19.01.2018	Amy
X.XX	±0.10							
X.XXX	±0.05	③	Add dimension and notes	19.01.2018	Segal			
DIM	TOL	②	Add description for screw	11.06.2015	Joanna	<b>ASSMANN</b> WSW components		
		①	Drawn	18.12.2008	JACK			
Angle	±1°	Id.	Modification	Date	Name	Replace		Sheet

ASSMANN WSW-No. <b>A-DS 09 LL-WP</b>	
Drawing-No. <b>ASS 3233 CO</b>	rev03
Replace	Sheet

