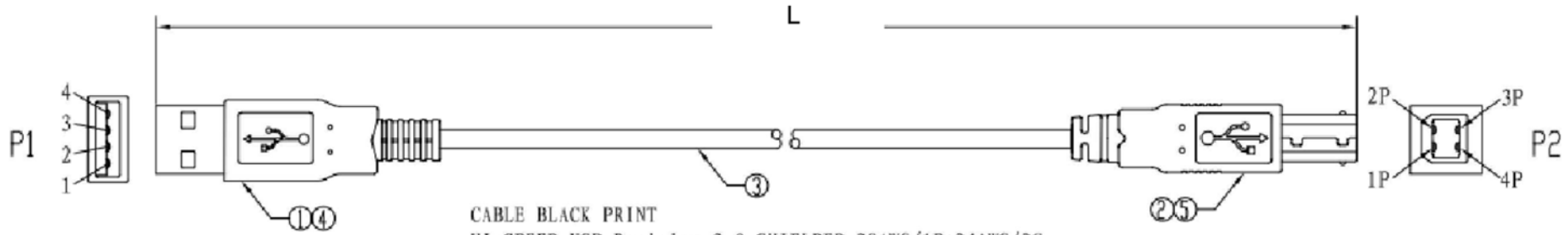
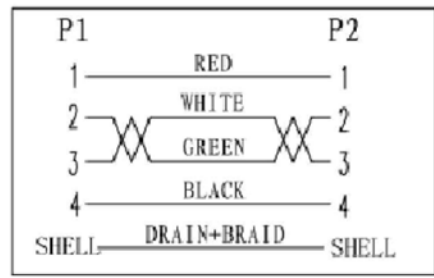


1 2 3 4 5 6 7



CABLE BLACK PRINT
 HI-SPEED USB Revision 2.0 SHIELDED 28AWG/1P+24AWG/2C
 E189529 AWM STYLE 2725 80° C 30V VW-1

PIN ASSIGNMENT:



P/N	L(mm)	tolerance
AK672/2-1	1000	±30
AK672/2-2	2000	±50
AK672/2-3	3000	±50
AK672/2-5	5000	±50

Electrical test:
 1. 100% short, open, miswire test
 2. Conduct resistance: 5 Ohm(max)
 3. Insulation resistance: 5Mohm(min)
 4. dielectric test: DC 300V

NO.	NAME	QTY	SPECIFICATION
⑧	PE BAG	1/5	CLEAR SIZE: 360*380*0.05mm PRINT BLACK "MADE IN CHINA" + "5PCS".
⑦	PE BAG	1	CLEAR SIZE: 150*280*0.05mm PRINT BLACK "MADE IN CHINA" + "1PC".
⑥	TIE	1	WHITE L=120mm
⑤	OUT JACKET	6g	BEIGE (IV-29#) PVC-40P (MOULD NO: WM-65)
④	OUT JACKET	6g	BEIGE (IV-29#) PVC-40P (MOULD NO: WM-40)
③	CABLE	1	BEIGE (IV-29#) USB2.0 UL2725 28#/1P+24#/2C+AEB OD: 4.7mm
②	CONN	1set	USB2.0 B MALE SHELL: NICKEL PIN G/F 3PCS TYPE INSULATOR COLOR: WHITE
①	CONN	1set	USB2.0 A MALE SHELL: NICKEL PIN G/F 4PCS TYPE INSULATOR COLOR: WHITE

RoHS compliant
 Unit:mm

Scale	FREE					Date	Name	Customer-No.
TOLERANCE					Drawn	11.02.2014	Joanna	ASSMANN WSW-No. AK672/2-X
X.X					Approved	11.02.2014	Joanna	
X.XX								
X.XXX								
DIM	TOL							Drawing-No.
X.°								ASS 7066 CA
		①	Drawn	11.02.2014	Joanna			rev00
Angle	TOL	Id.	Modification	Date	Name			Replace

1 2 3 4 5 6 7