

MJTP SERIES 6MM & 4MM SMD TACT SWITCHES

FEATURES

- Numerous single pole-single throw momentary configurations.
- Excellent tactile feed-back (Snap dome).
- Ultra-compact size.
- Long operating life for high reliability.
- Molded-in terminals minimize wicking of flux or solder.

MATERIALS

Gold plating available on contacts & terminals - consult factory.

Case: High temperature 4/6 nylon.
 Actuator: High temperature 4/6 nylon.
 Cover/Bracket: PET film, tin plated brass or stainless steel.
 Terminals: Silver plated brass.
 Shorting Contact: Phosphor bronze or stainless steel with silver plating.
 L.E.D. rating: Forward voltage- 2.1 V (3.0 V Max.). Cont. fwd. current 20mA max.@ 25°C.

GENERAL SPECIFICATIONS

ELECTRICALS

Contact rating: 50 mA @ 12 VDC
 Insulation resistance: 100 megohms min. (100 VDC)
 Dielectric withstanding voltage: 250 VAC for 1 minute
 Contact resistance: 100 milliohms max. @ 5 VDC, 10 mA
 Electrical life: 100,000 cycles min. (1,000,000 cycles available - consult factory)
 Contact bounce: less than 10 msec.

MECHANICALS, THERMALS, ENVIRONMENTALS

Plunger travel: .010" + .008", - .004" (0,25 +0,2, -0,1 mm)
 Actuation force: 160 grams ±30 grams
 Operating temperature range: -20°C to +70°C
 Storage temperature range: -30°C to +80°C for 96 hours
 Shock resistance: 30G per method 213, MIL-STD-202
 Vibration resistance: passes method 201, MIL-STD-202

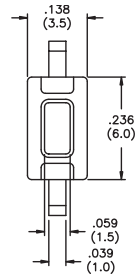
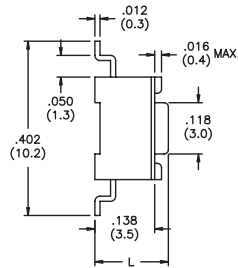
SOLDERING (note - non-washable except for models indicated as 'process compatible').

IR reflow soldering: 240°C max. for 20 seconds max.
 Wave soldering: 255°C max. for 5 seconds max.
 Hand soldering: 320°C max. for 3.5 seconds max. (40 watt iron max.)

SPECIFICATIONS SUBJECT TO CHANGE WITHOUT NOTICE.

F

MJTP1106S

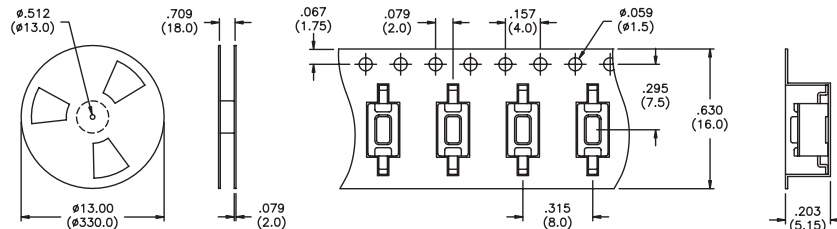


| Model No. | Dim. L (in./mm) |
|-------------------|-----------------|
| MJTP1106S | .169 (4,3) |
| MJTP1106SA | .197 (5,0) |

Bulk packaged.

MJTP1106STR & MJTP1106SATR

Same as above, except supplied on tape and reel as shown.

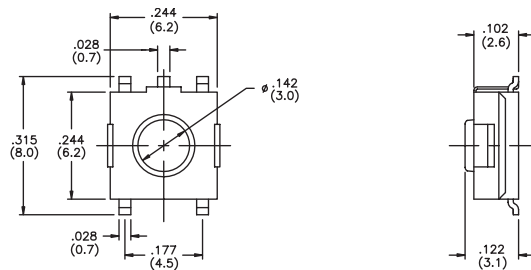


Tape & reel packaging - quantity 2200 per reel.



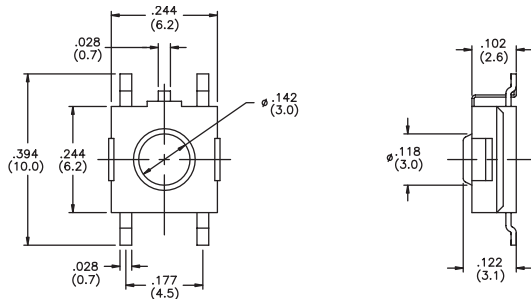
SPECIFICATIONS SUBJECT TO CHANGE WITHOUT NOTICE.

MJTP1122
Grounding



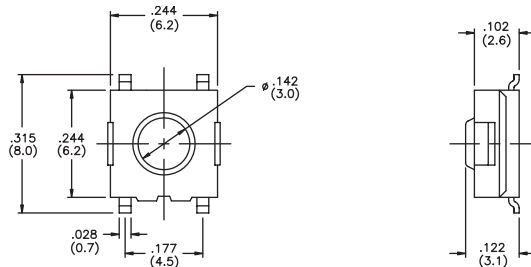
Bulk packaged.

MJTP1122A
Grounding



Bulk packaged.

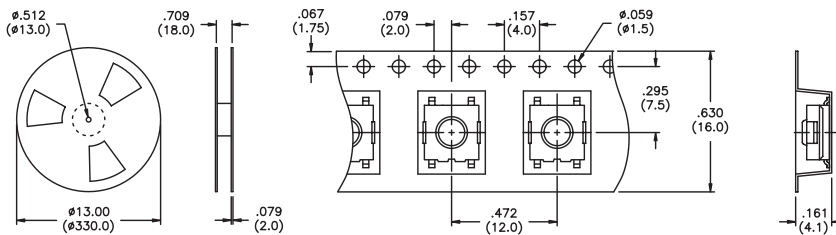
MJTP1122B



Bulk packaged.

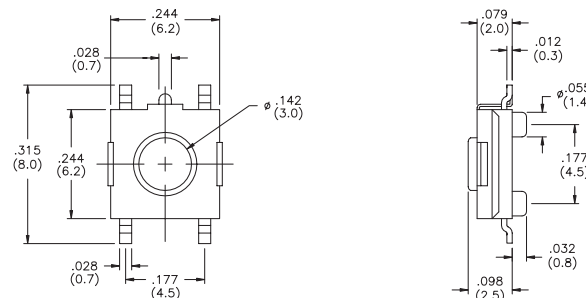


MJTP1122TR & MJTP1122BTR
Same as above, except supplied on tape & reel as shown.
Note - MJTP1122A not available on tape & reel.



Tape & reel packaging - quantity 1500 per reel.

MJTP1125A
Grounding



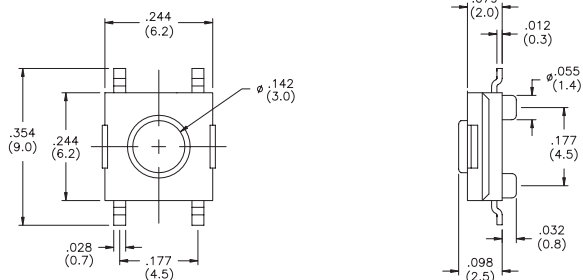
Bulk packaged.

New!





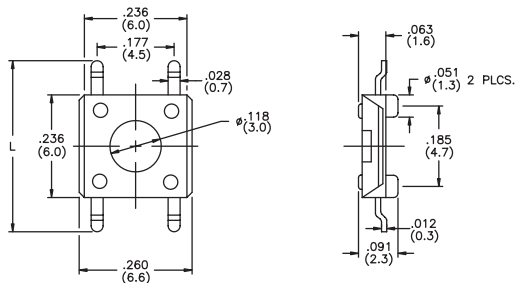
MJTP1125B



Bulk packaged.

New!

MJTP1137

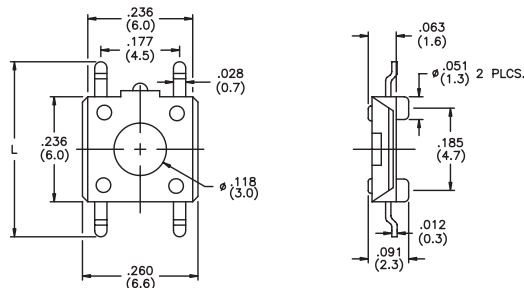


| Model No. | Dim. L (in./mm) |
|------------------|-----------------|
| MJTP1137 | .315 (8,0) |
| MJTP1137A | .394 (10,0) |

Bulk packaged.

MJTP1137E

Grounding

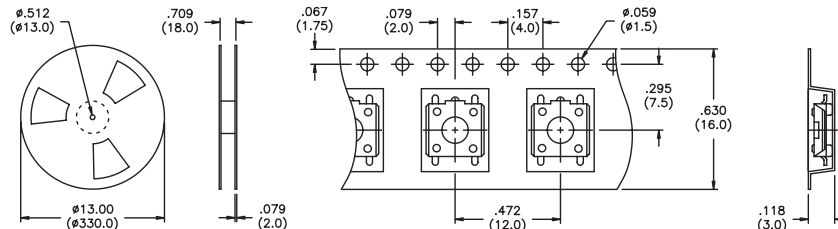


| Model No. | Dim. L (in./mm) |
|-------------------|-----------------|
| MJTP1137E | .315 (8,0) |
| MJTP1137AE | .394 (10,0) |

Bulk packaged.

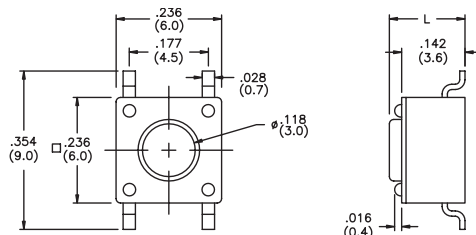
MJTP1125ATR. MJTP1125BTR. MJTP1137TR & MJTP1137ETR

Same as above, except supplied on tape & reel as shown.



Tape & reel packaging - minimum quantity 2200 per reel.

MJTP1138



| Model No. | Dim. L (in./mm) |
|------------------|-----------------|
| MJTP1138 | .170 (4,3) |
| MJTP1138A | .197 (5,0) |
| MJTP1138B | .374 (9,5) |
| MJTP1138C | .315 (8,0) |
| MJTP1138E | .287 (7,3) |
| MJTP1138F | .335 (8,5) |
| MJTP1138G | .275 (7,0) |

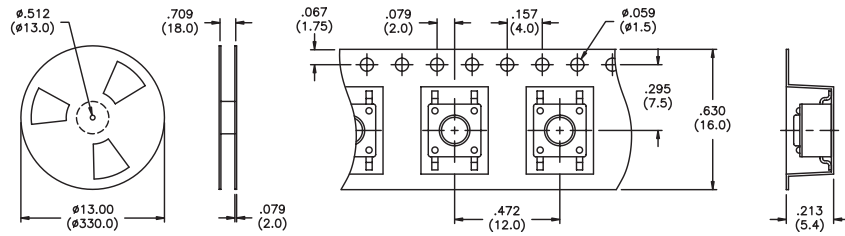
Models MJTP1138 & MJTP1138A bulk packaged. Other models supplied in tubes (90 pcs.).

SPECIFICATIONS SUBJECT TO CHANGE WITHOUT NOTICE.



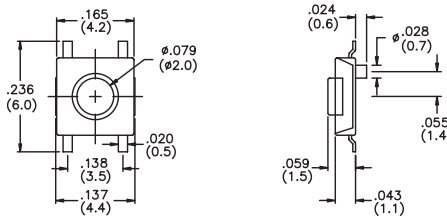
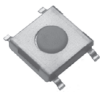
SPECIFICATIONS SUBJECT TO CHANGE WITHOUT NOTICE.

MJTP1138TR & MJTP1138ATR
Same as above except supplied on tape & reel as shown.



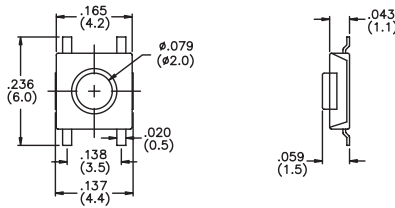
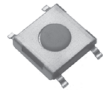
Tape & reel packaging - quantity 1250 per reel.

MJTP1140
4mm x 4mm



Bulk packaged.

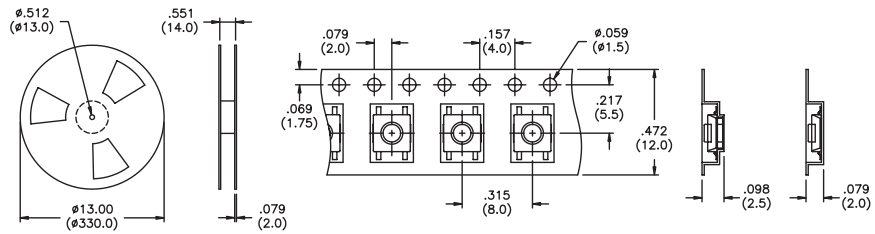
MJTP1140A



Bulk packaged.

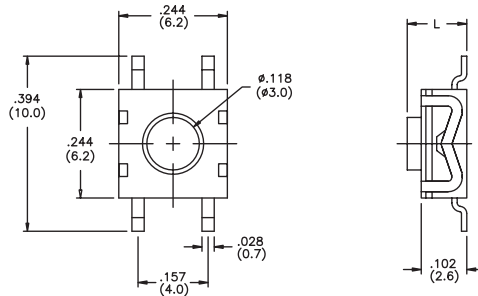
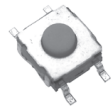


MJTP1140TR & MJTP1140ATR
Same as above, except supplied on tape & reel as shown.



Tape & reel packaging - quantity 3400 per reel.

MJTP1162



| Model No. | Dim. L (in./mm) |
|------------------|-----------------|
| MJTP1162 | .102 (2,6) |
| MJTP1162A | .134 (3,4) |

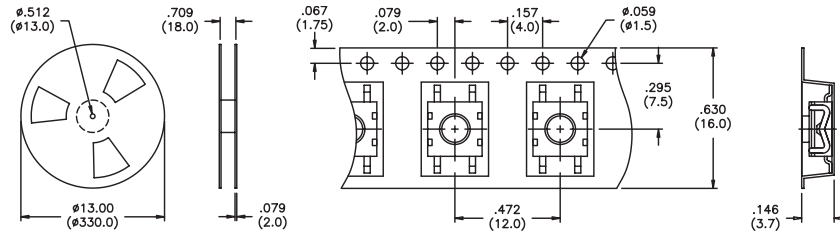
Bulk packaged.





MJTP1162TR & MJTP1162ATR

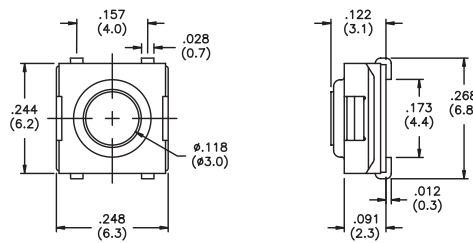
Same as above except supplied on tape & reel as shown.



Tape & reel packaging - quantity 1600 per reel.

MJTPSJW66N

Process compatible

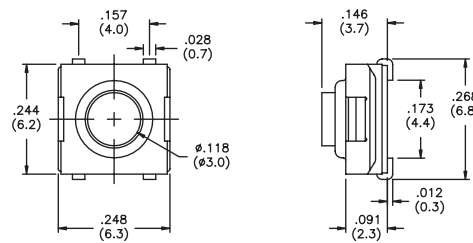


Bulk packaged.

New!

MJTPSJW69N

Process compatible

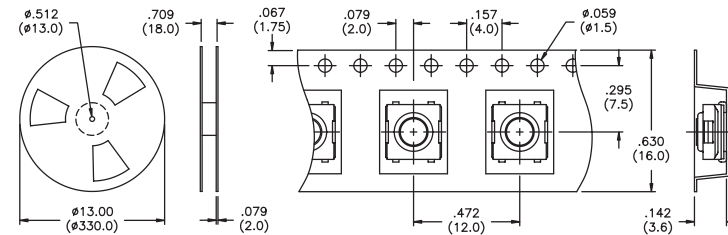


Bulk packaged.

New!

MJTPSJW66NTR & MJTPSJW69NTR

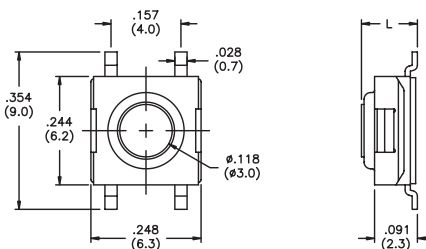
Same as above, except supplied on tape & reel as shown.



Tape & reel packaging - quantity 1600 per reel.

MJTPSMW

Process compatible



| Model No. | Dim. L (in./mm) |
|-----------------|-----------------|
| MJTPSMW | .122 (3,1) |
| MJTPSMWA | .091 (2,3) |
| MJTPSMWB | .146 (3,7) |

Bulk packaged.

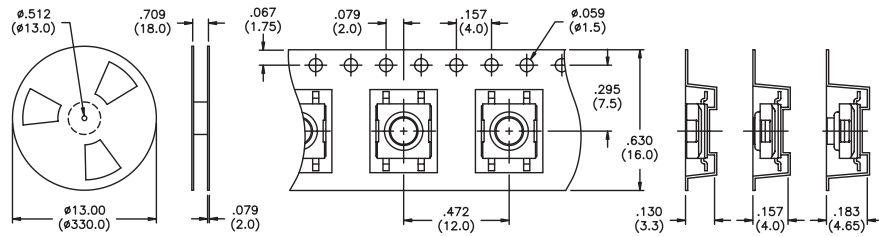
SPECIFICATIONS SUBJECT TO CHANGE WITHOUT NOTICE.





MJTPSMWTR
MJTPSMWATR
MJTPSMWBTR

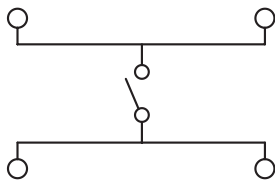
Same as above except supplied on tape & reel as shown.



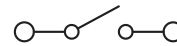
Tape & reel packaging - quantity 'MWTR' & 'MWATR' 2000 per reel, 'MWBTR' 1900 per reel.

SCHEMATICS

MJTP1122
MJTP1125
MJTP1137
MJTP1138
MJTP1140
MJTP1162
MJTPSJW66N
MJTPSJW69N
MJTPSMW



MJTP1106



PRINTED CIRCUIT BOARD LAYOUTS

Layout tolerances; Linear: $\pm .004"$ ($\pm 0,1\text{MM}$) Holes: $\pm .002"$ ($\pm 0,05\text{MM}$) Pads: $\pm .008"$ ($\pm 0,2\text{MM}$)

