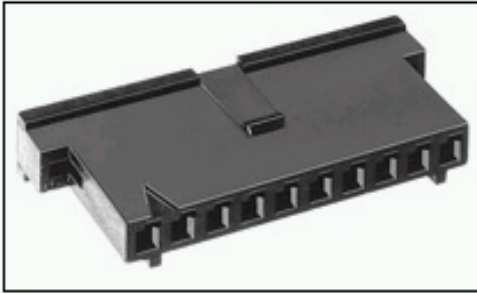


## 1-88859-4 Product Details

 [Live Product Chat](#)



**1-88859-4**

TE Part Number: 1-88859-4

 [Active](#)

 [Add to Part List](#)

### Flexible Film Connectors

 [Always EU RoHS/ELV Compliant \(Statement of Compliance\)](#)

#### Product Highlights:

- Housing
- 2.54 mm Centerline
- Connector Type = Standard
- Number of Positions = 11
- Number of Rows = Single

[View all Features](#) | [Find Similar Products](#)

### Quick Links

- ▶ [Check Pricing & Availability](#)
- ▶ [Search for Tooling](#)
- ▶ [View Mating Products \(1\)](#)
- ▶ [View Contacts \(58\)](#)
- ▶ [Product Feature Selector](#)
- ▶ [Contact Us About This Product](#)
- ▶ [Request Samples](#)

**NEW!**

### Documentation & Additional Information

#### Product Drawings:

- [HOUSING, RECEPTACLE, FFC, .100 CL](#) (PDF, English)

#### Catalog Pages/Data Sheets:

- None Available

#### Product Specifications:

- None Available

#### Application Specifications:

- [Flexible Flat Cable \(FFC\) Housings with Contact Cavi...](#) (PDF, English)

#### Instruction Sheets:

- None Available

#### CAD Files: ([CAD Format & Compression Information](#))

- [2D Drawing](#) (DXF, Version U)
- [3D Model](#) (IGES, Version U)
- [3D Model](#) (STEP, Version U)

[List all Documents](#)

#### Additional Information:

- [Product Line Information](#)

#### Additional Product Images:

- [Typical Application, to-Board](#)
- [Typical Application, to-Cable](#)

#### Related Products:

- [Tooling](#)
- [Mating Products \(1\)](#)
- [Contacts \(58\)](#)

### Product Features (Please use the Product Drawing for all design activity)

#### Product Type Features:

- [Product Type](#) = Housing
- [Connector Type](#) = Standard
- [Number of Positions](#) = 11
- [Mating Type](#) = Receptacle
- [Mating Connector Lock](#) = With
- [Mating Connector Lock Type](#) = Detent
- [Mating Polarization](#) = With
- [Mounting Ears](#) = Without
- Flame Retardant = Yes
- Color = Black
- Comment = Use Extraction Tool No. 91092-1 for round wire contacts.

#### Mechanical Attachment:

- [Panel Attachment](#) = Without

#### Body Related Features:

- [Centerline \(mm \[in\]\)](#) = 2.54 [0.100]
- [Number of Rows](#) = Single

#### Housing Related Features:

- Housing Material = Thermoplastic
- Housing Flammability Rating = UL 94V-0

#### Industry Standards:

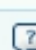
- [RoHS/ELV Compliance](#) = RoHS compliant, ELV compliant
- [Lead Free Solder Processes](#) = Not relevant for lead free process
- RoHS/ELV Compliance History = Always was RoHS compliant

#### Conditions for Usage:

- [Terminate To](#) = FFC Cable

#### Other:

- Brand = AMP

 [Provide Website Feedback](#) | [Need Help?](#)