



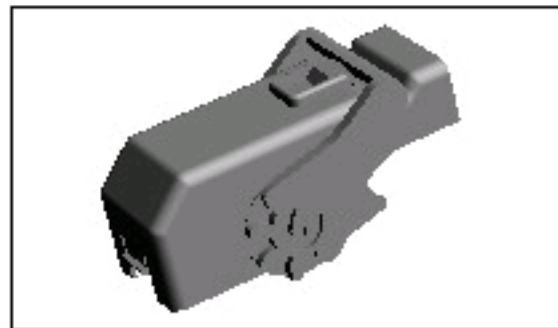
Search bar: What can we help you find?

- Products
- Industries
- Resources
- About TE
- My Account
- Innovation
- Support Center

Home > Products > Automotive > Product Feature Selector > Product Details

1452421-1 Product Details

Share | Print | Email



1452421-1

TE Internal Number: 1452421-1
Active

View 3D PDF

Multiple Contact Point (MCP) & MCON Contact Systems

Always EU RoHS/ELV Compliant (Statement of Compliance)

Product Highlights:

- MCON Product Line, Multiple Contact Point (MCP) Product Line
- Accessory
- Accessory Type = Cover
- 90° Cable Exit Angle
- 58 Positions

View all Features

- Add to My Part List
- Request Sample
- Find Similar Products
- Buy Product

Quick Links

- Pricing & Availability
- Search for Tooling
- Product Feature Selector
- Contact Us About This Product

Documentation & Additional Information

Product Drawings:

- None Available

Catalog Pages/Data Sheets:

- None Available

Product Specifications:

- 154 pos. PCM connector (96 and 58 pos.) (PDF, English)

Application Specifications:

- 154POS. CONNECTOR (96POS. AND 58POS. CONNECTOR) (PDF, English)

Instruction Sheets:

- None Available

CAD Files: (CAD Format & Compression Information)

- 2D Drawing (DXF, Version E1)
- 3D Model (IGES, Version E1)
- 3D Model (STEP, Version E1)

Related Products:

- Tooling

List all Documents

Product Features (Please use the Product Drawing for all design activity)

Product Type Features:

- Product Line = MCON, Multiple Contact Point (MCP)
- Product Type = Accessory
- Accessory Type = Cover
- Accessory Color = Black

Body Features:

- Cable Exit Angle = 90°
- Assembly Integration Feature = With
- Assembly Integration Type = Lever
- Used With = Socket Housing

Housing Features:

- Housing Material = PBT/ASA - GF20

Configuration Features:

- Number of Positions = 58

Industry Standards:

- RoHS/ELV Compliance = RoHS compliant, ELV compliant
- Lead Free Solder Processes = Not relevant for lead free process
- RoHS/ELV Compliance History = Always was RoHS compliant

Packaging Features:

- Packaging Method = Box
- Packaging Quantity = 300

Other:

- Brand = AMP

Corporate Information

- About TE
- Investors
- News Room
- Supplier Portal
- Careers
- Terms & Conditions
- Privacy Policy

Quick Links

- Distributor Inventory
- Product Cross Reference
- Documents & Drawings
- Product Compliance Support Center
- Site Map

Customer Support

- Email or Chat With Us
- Find a Phone Number
- Knowledge Base
- Manage Your Account

Keep Me Informed

