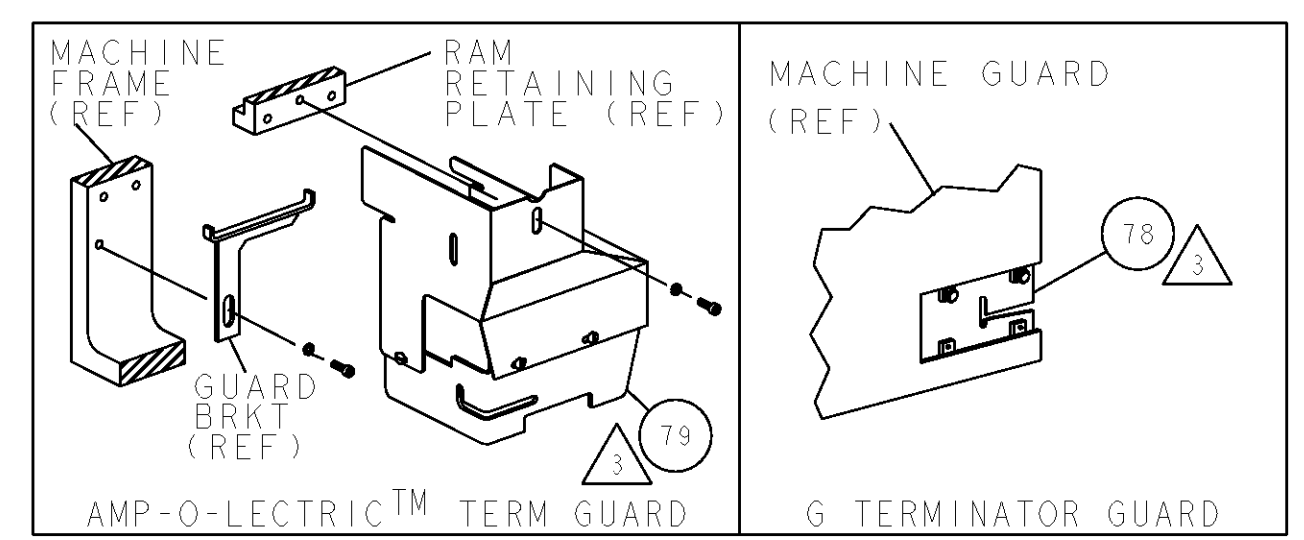


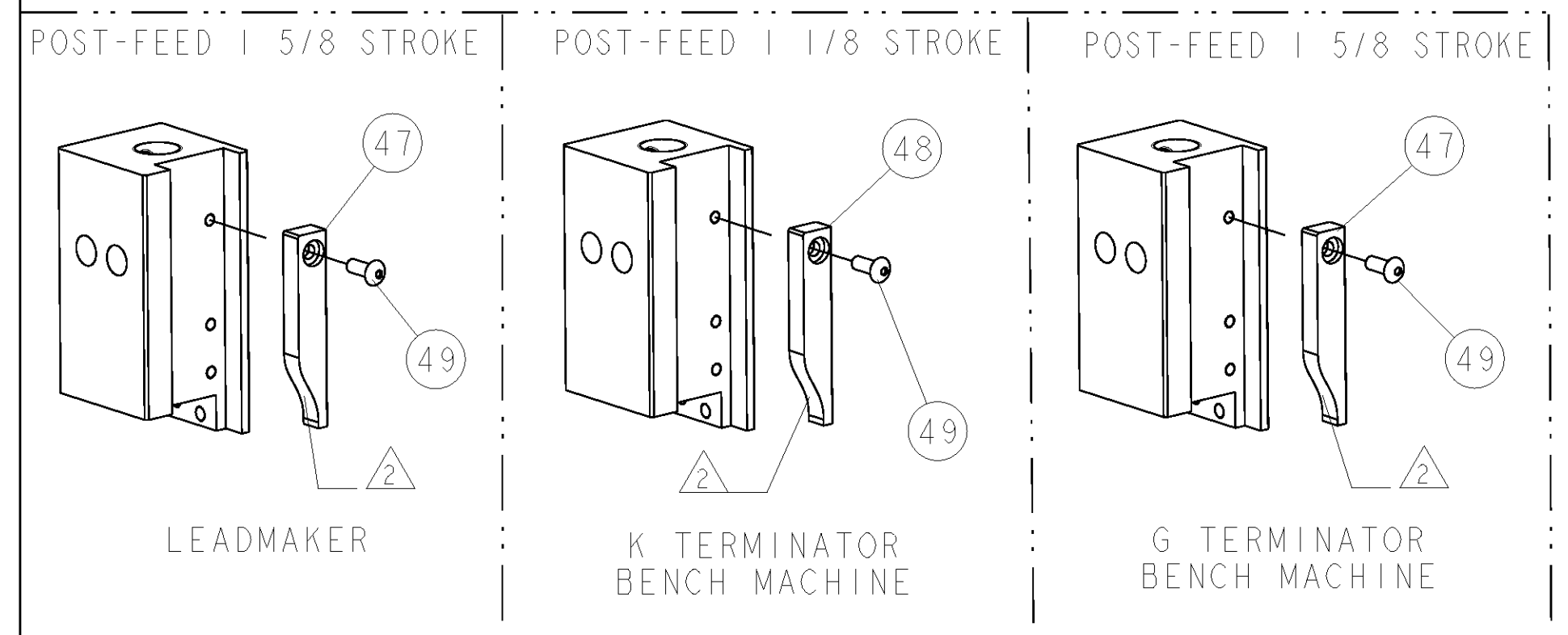
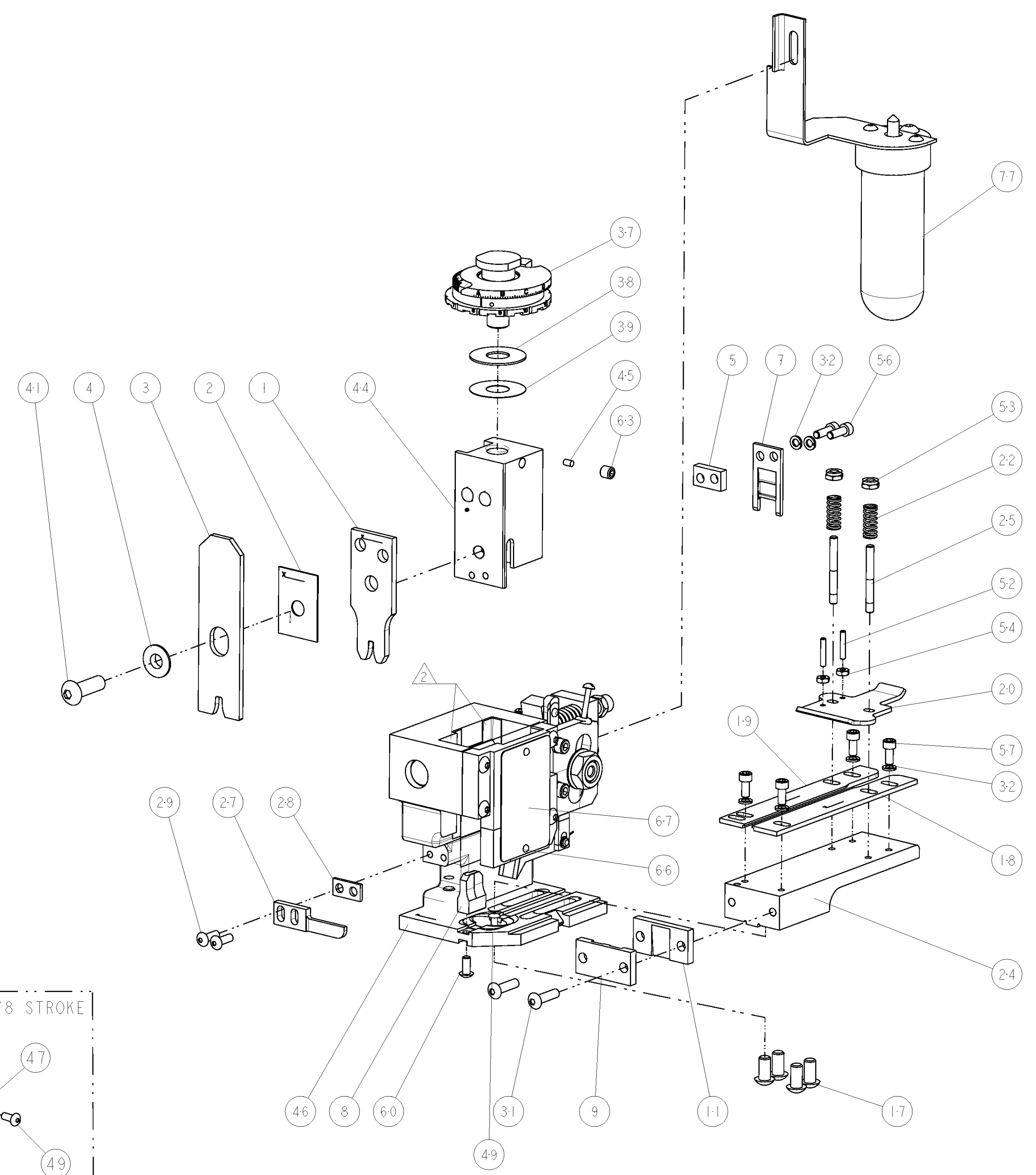
THIS DRAWING IS UNPUBLISHED.	RELEASED FOR PUBLICATION			
COPYRIGHT 20 BY TYCO ELECTRONICS CORPORATION, ALL RIGHTS RESERVED.				
PART NUMBER	REV	FIRST USED	POWER UNIT	FEED TYPE
1855052-1	D	122500-1	LEADMAKER & BENCH MODEL G	POST FEED
1855052-2	D	565435-5	BENCH MODEL K	POST FEED
7-1855052-7	B	-	SPARE PARTS	-

- △ RECOMMENDED SPARE PARTS
- △ GREASE LIGHTLY
- △ GUARD MUST BE IN PLACE WHEN OPERATING APPLICATOR IN A BENCH MACHINE



TERMINAL NAME: #6 STUD RING TERMINAL					
TE PN	42569	AMP TERMINAL - AMP CRIMP SPECS			
40659	60260				
40660	640118	REF SET	CRIMP HEIGHT	WIRE SIZE	
40661	63170	B3	.102±.002[2.59±0.05mm]	14 AWG	
40723	63171	C8	.094±.002[2.39±0.05mm]	16 AWG	
40724	150644	D0	.090±.002[2.29±0.05mm]	1(20) + 1(22)	
40725	63872	D6	.089±.002[2.26±0.05mm]	18 AWG	
40879	-	CRIMP	SIZE	TYPE	RANGE
41519	-	-	-	-	-
42007	-	WIRE	.130 [3.30mm]	F	18-14 AWG
42017	-	INSUL	.180 [4.57mm]	F	.100-.140
WIRE STRIP LENGTH	.184 -.199	TERM APPL SPEC	114-2084	FEED	.855
		APPL INSTRUCTIONS	408-8039	SET UP GAGE	458638-1

LOC	DIST	REV	DATE	BY	APPV
A	66				



REF	QTY	DESCRIPTION	ITEM NO
-	-	455745-1 GUARD WINDOW	79
-	-	679532-1 INSERT, GUARD	78
-	-	465184-9 LUBRICATOR ASSY	77
-	-	217238-1 GENERAL INSTRUCTION PKG	72
-	-	4088039 EF APPL INST 408-8039	71
-	-	461264-5 PLATE, IDENTIFICATION	67
-	-	21017-2 SCREW, DRIVE	66
-	-	21009-2 SCR, SET, SELF LOCKING 1/4-20 X .250	63
-	-	22733-8 SCR, BHSC, SELF-LOCKING, 8-32 X .375	60
-	-	2-21000-6 SCR, SKT HD CAP 8-32 X .375	57
-	-	2-21000-7 SCR, SKT HD CAP 8-32 X .500	56
-	-	21018-4 NUT, HEX, REG 4-40	54
-	-	21022-2 NUT, LOCK, HEX, TORQUE, 8-32	53
-	-	2-21006-6 SCR, SET, CUP POINT 4-40 X .625	52
-	-	1-21002-7 SCR, BTN SKT HD CAP 6-32 X .375	49
-	-	690501-3 CAM, POST FEED, 1 1/8	48
-	-	690501-4 CAM, POST-FEED 1 5/8	47
-	-	458980 SUB ASSY, APPLICATOR FRAME	46
-	-	690191-1 PLUG, NYLON	45
-	-	1-455674-3 RAM	44
-	-	7-21002-9 SCR, BTN SKT HD CAP 5/16-24 X 1.00	41
-	-	690125-1 SHIM SUB-ASSY	39
-	-	469367-7 SHIM	38
-	-	879103-2 FINE ADJUST HEAD SUBASSY	37
-	-	21024-4 WASHER, SPRG LOCK, REG NO 8	32
-	-	2-21002-9 SCR, BTN SKT HD CAP 10-32 X .750	31
-	-	2-21002-2 SCR, BTN SKT HD CAP 8-32 X .500	29
-	-	3-690451-2 SPACER, STRIPPER	28
-	-	240639-1 STRIPPER (MACHINING)	27
-	-	22354-8 STUD, THREADED	25
-	-	455678-1 PLATE, STRIP GUIDE	24
-	-	4-22281-1 SPRING, DRAG	22
-	-	454177-1 DRAG	20
-	-	458030-5 STRIP GUIDE, REAR	19
-	-	458031-5 STRIP GUIDE, FRONT	18
-	-	3-21002-3 SCR, BTN SKT HD CAP 1/4-20 X .500	17
-	-	240644-1 PLATE, REAR SHEAR	11
-	-	690482-8 PLATE, FRONT SHEAR	9
-	-	4-240655-1 ANVIL, COMBINATION	8
-	-	1-690474-0 BLADE, SLUG	7
-	-	1-240641-2 SPACER	5
-	-	238009-1 BLOCK, FL CRIMPER SPACER	4
-	-	456134-6 CRIMPER, INSULATION F PREMIUM	3
-	-	455888-6 SPACER, CRIMPER	2
-	-	456410-4 CRIMPER, WIRE PREMIUM	1

77-2-1	U/M	PART NO	DESCRIPTION	ITEM NO																																				
<table border="1"> <tr> <td colspan="2">DIMENSIONS: INCHES</td> <td colspan="2">TOLERANCES UNLESS OTHERWISE SPECIFIED:</td> <td colspan="2"> Tyco Electronics Harrisburg, PA 17105-3608 </td> </tr> <tr> <td>1</td> <td>PLC</td> <td>±</td> <td>0.1</td> <td colspan="2">NAME</td> </tr> <tr> <td>2</td> <td>PLC</td> <td>±</td> <td>0.01</td> <td colspan="2">PRODUCT SPEC</td> </tr> <tr> <td>3</td> <td>PLC</td> <td>±</td> <td>0.001</td> <td colspan="2">APPLICATION SPEC</td> </tr> <tr> <td>4</td> <td>PLC</td> <td>±</td> <td>0.0001</td> <td colspan="2">MATERIAL</td> </tr> <tr> <td colspan="2">FINISH</td> <td colspan="2">FINISH</td> <td colspan="2">WEIGHT</td> </tr> </table>					DIMENSIONS: INCHES		TOLERANCES UNLESS OTHERWISE SPECIFIED:		Tyco Electronics Harrisburg, PA 17105-3608		1	PLC	±	0.1	NAME		2	PLC	±	0.01	PRODUCT SPEC		3	PLC	±	0.001	APPLICATION SPEC		4	PLC	±	0.0001	MATERIAL		FINISH		FINISH		WEIGHT	
DIMENSIONS: INCHES		TOLERANCES UNLESS OTHERWISE SPECIFIED:		Tyco Electronics Harrisburg, PA 17105-3608																																				
1	PLC	±	0.1	NAME																																				
2	PLC	±	0.01	PRODUCT SPEC																																				
3	PLC	±	0.001	APPLICATION SPEC																																				
4	PLC	±	0.0001	MATERIAL																																				
FINISH		FINISH		WEIGHT																																				
114-2084			SCALE	3-5																																				
00779			CAGE CODE	1855052																																				
CUSTOMER ACCESSIBLE PRODUCTION DRAWING			SCALE	3-5																																				