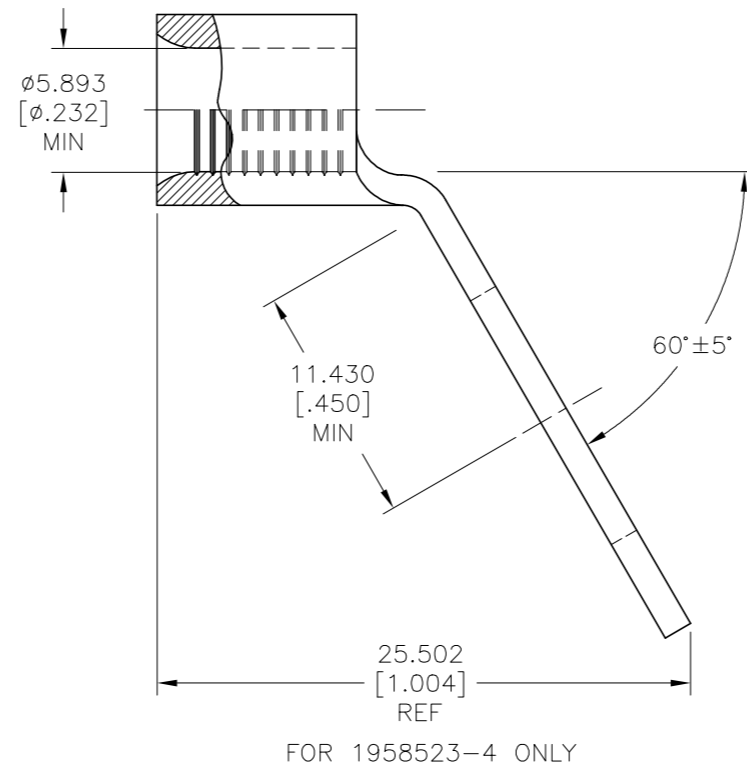
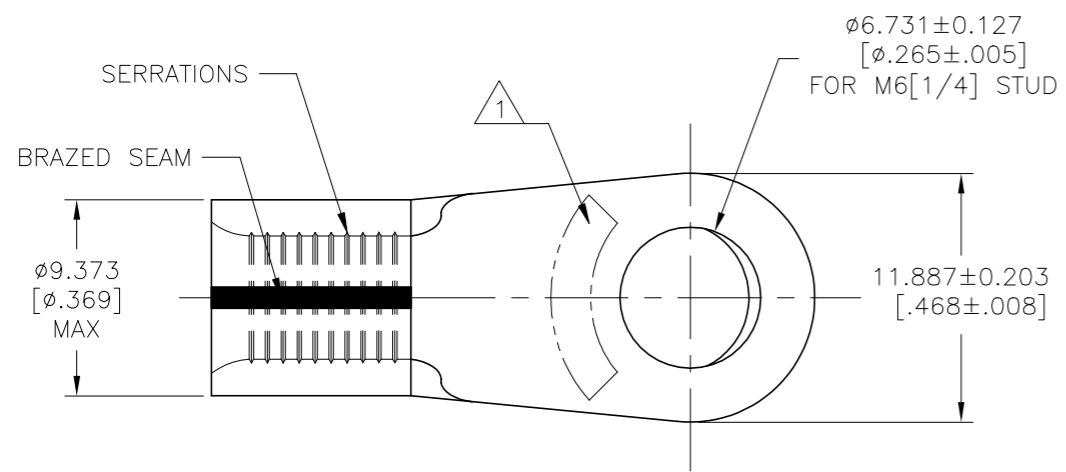


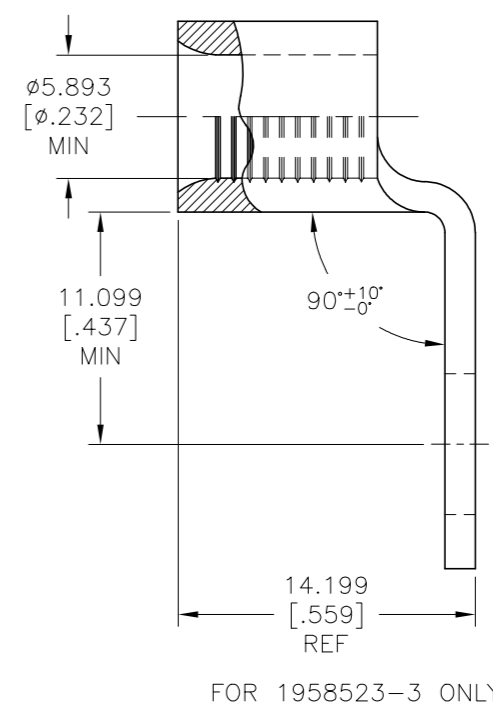
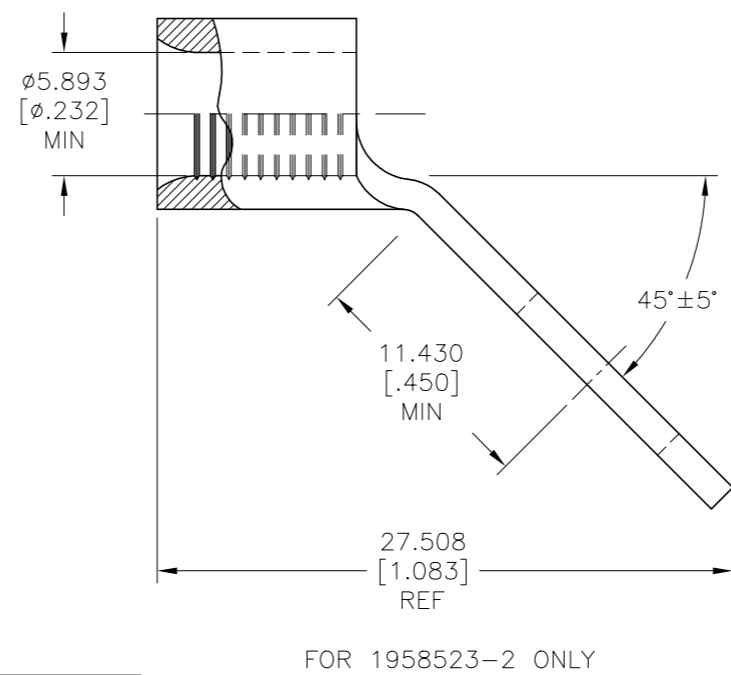
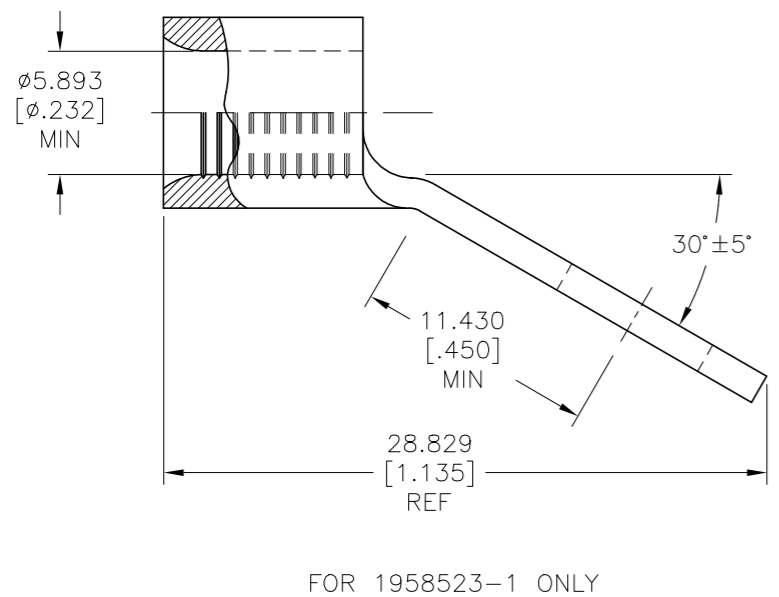
THIS DRAWING IS UNPUBLISHED. RELEASED FOR PUBLICATION. ALL RIGHTS RESERVED.

REVISIONS				
P	LTR	DESCRIPTION	DATE	APVD
2		REVISED PER ECO-16-014628	14OCT2016	RS DR
A		REVISED PER ECO-18-007844	23MAY2018	RS DR
A1		REVISED PER ECO-19-011335	06AUG2019	RS DR



**AMP**  
WIRE RANGE  
6 AWG  
SOLID OR STRANDED

- 1 STAMP AMP 6\* APPROX AS SHOWN.
- 2 NICKEL PLATE 0.00762[.000300] MIN EXT THK PER SAE AMS QQ-N-290.
- 3 COPPER PER ASTM B-152, ANNEALED.
- 4 MATERIAL THK: 1.448±0.076[.057±.003].



QTY	PACKAGE TYPE	BEND ANGLE	PART NUMBER
100	LOOSE PIECE	60°	1958523-4
		90°	1958523-3
		45°	1958523-2
		30°	1958523-1

AMP INCORPORATED  
CUSTOMER SERVICE SYSTEMS

MAX RECOMMENDED OPERATING TEMPERATURE:  
343°C[649°F]

VOLTAGE RATING:  
NOT APPLICABLE

WIRE CROSS SECTIONAL AREA RANGE:  
10.5-16.8mm<sup>2</sup> [20,800-33,100] CIR MILS  
SOLID OR STRANDED

FOR ADDITIONAL PRODUCT INFORMATION OR COPIES OF DRAWINGS AND TECHNICAL DOCUMENTS	PRODUCT INFORMATION CENTER 1-800-522-6752
FOR APPLICATION TOOLING INFORMATION	TOOLING ASSISTANCE CENTER 1-800-722-1111
FOR ORDER ENTRY	1-800-526-5142

THIS DRAWING IS A CONTROLLED DOCUMENT.

DIMENSIONS: mm [INCHES]	TOLERANCES UNLESS OTHERWISE SPECIFIED: 0 PLC ± - 1 PLC ± - 2 PLC ± - 3 PLC ± 0.127[.005] 4 PLC ± - ANGLES ± -	DWN RAVI S 23MAY2018 CHK ROHDE DANIEL F 23MAY2018 APVD ROHDE DANIEL F 23MAY2018	NAME 108-32046 APPLICATION SPEC 114-2162	SIZE A2 CAGE CODE 00779 DRAWING NO C=1958523	RESTRICTED TO -
MATERIAL 3	FINISH 2	TE Connectivity Ltd.		TERMINAL, RING TONGUE, HEAT RESISTANT, STRATO-THERM 6 AWG	
CUSTOMER DRAWING		SCALE 4:1		SHEET 1 of 1 REV A1	