

4

3

2

1

THIS DRAWING IS UNPUBLISHED.

RELEASED FOR PUBLICATION

20

© COPYRIGHT 20

BY -

ALL RIGHTS RESERVED.

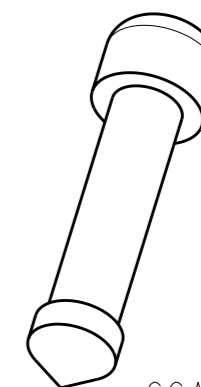
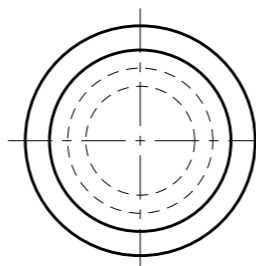
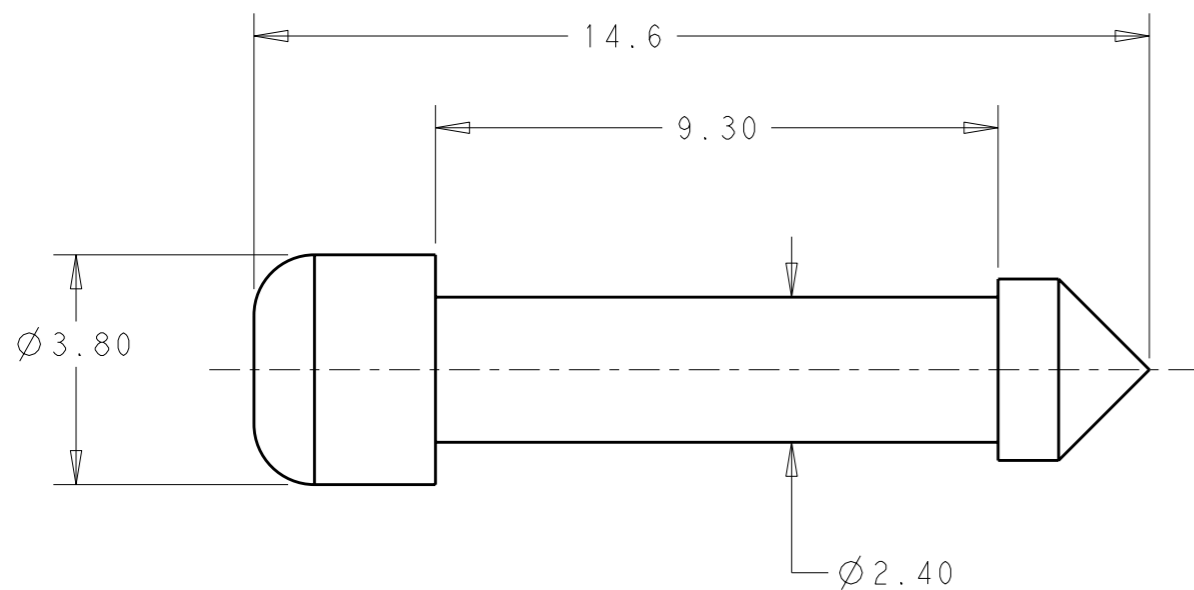
LOC
HK

DIST
00

REVISIONS

P	LTR	DESCRIPTION	DATE	DWN	APVD
	B2	REVISED PER ECO-11-024023	01DEC2011	DD	RL
	B3	REVISED PER ECO-12-004032	28FEB2012	DD	DR

1. MAXIMUM ALLOWABLE FLASH IS 0.127mm. MAXIMUM EJECTOR PIN DEPRESSION IS 0.127mm.
2. PLUGS ARE FOR USE WITH TE 1mm SERIES SEALED SOCKET/HARNESS CONNECTORS. SEE TE DRAWING #1456016.
3. TE CONNECTIVITY (TE) PART NUMBER: 4-1437292-3.
4. COLOR: NATURAL



SCALE 4:1

4-1437292-3

PART NUMBER

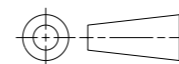
THIS DRAWING IS A CONTROLLED DOCUMENT.

DWN	J. REMOLL	07-03-01
CHK	J. REMOLL	07-03-01
APVD	J. REMOLL	07-03-01

STE TE Connectivity

DIMENSIONS:

mm



TOLERANCES UNLESS OTHERWISE SPECIFIED:

0 PLC	±-
1 PLC	±0.3
2 PLC	±0.20
3 PLC	±-
4 PLC	±-
ANGLES	±2°

MATERIAL

-

FINISH

-

PRODUCT SPEC

APPLICATION SPEC

WEIGHT

-

NAME
WIRE SEAL PLUG
1mm SEALED
HARNESS CONNECTOR

SIZE	CAGE CODE	DRAWING NO	RESTRICTED TO
------	-----------	------------	---------------

A300779 C-1456273

CUSTOMER DRAWING

SCALE 8:1

SHEET 1 OF 1

REV B3