



Personal Systems Products
Computer Industry

Board-to-Board Connectors

**Standard Edge .050 Series
PCI Connectors**



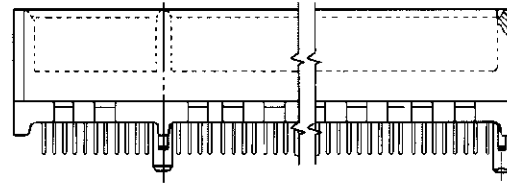
Material and Finish:

Housing – High temperature thermoplastic, white

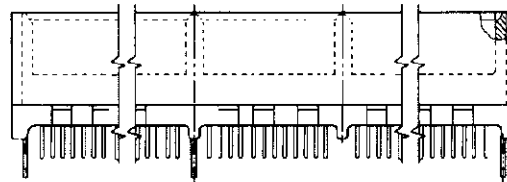
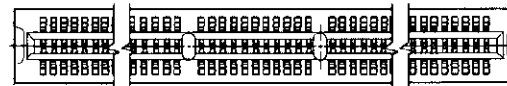
Contacts – Phosphor bronze, duplex plated

A - .000030 [0.00076] min. gold over .000040 [0.00102] min. palladium-nickel in contact area .000100 [0.00254] min. tin-lead on soldertails; al over .000050 [0.00127] min. nickel underplate

B - Gold flash over .000040 min. palladium nickel in contact area; .000100 [0.00254] min. tin-lead on soldertails; all over .000050 [0.00127] min. nickel underplate



With Plastic Pylons
Style 1



With Metal Holddowns
Style 2

Product Facts:

- Supports PCI extension cards derived from the MC bus
- For 3.3 and 5 volt signaling
- Easy mating of high circuit count daughterboards
- Choice of plastic pylons or metal holddowns
- 32 and 64 bit connectors available
- Polarizing web for positive board-to-board registration
- Compatible with infrared (IR) soldering techniques

No. of Dual Pos	Housing Style	Signaling (V)	Comment	Tail Length	Finish	Part Number
60	1	3.3 & 5	32 Bit	.100 2.54	A	145154-4
60	2	3.3 & 5	32 Bit	.100 2.54	B	145167-4
60	1	3.3 & 5	32 Bit	.125 3.17	A	145154-8
60	1	3.3 & 5	32 Bit	.125 3.17	B	11299-1
92	2	5	64 Bit	.100 2.54	B	145169-4
92	1	3.3	64 Bit	.125 3.17	A	145165-8
92	1	5	64 Bit	.125 3.17	A	145166-8

Note:
BLUE part numbers indicate 2D geometry and 3D CAD models that are included on CD-ROM.

Personal Systems Products

Board-to-Board Connectors