

## Shielded Miniature Circular DIN Receptacles, Thru-Hole (Continued)

### Right-Angle Board-Mount Receptacles

#### Material and Finish

**Housing** Thermoplastic, 94V-0 rated, black

**Contacts** — Copper alloy, duplex plated as follows:

**A** — Gold flash in mating area, .000120 [0.00305] min. tin-lead on solder tail, all over .000050 [0.00127] min. nickel underplating

**B** — .000030 [0.00076] gold min. in mating area, .000120 [0.00305] min. tin-lead on solder tail, all over .000050 [0.00127] min. nickel underplating

**Shield** — Copper alloy, plated .000059-.00015E [1.50-4.00µm] thick bright tin

#### Notes:

1. Recommended pc board thickness is .062 [1.57].
2. This connector ensures grounding to the front panel when the gap between the pc board edge and the panel is no greater than .060 [1.52].

#### Technical Documents

##### Product Specification

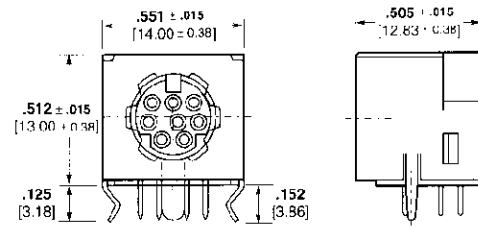
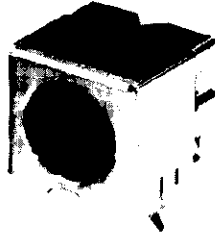
108-1225

##### Application Specification

114-40031

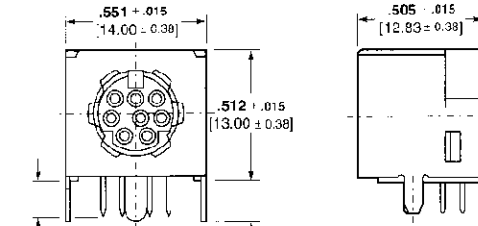
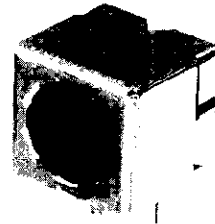
See application specification 114-40031 for layout dimensions.

Part No. 749231-1

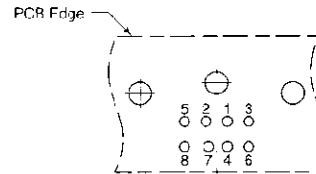


With Hold-Down

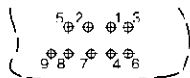
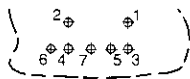
Part No. 749265-1



Without Hold-Down



8-Pin PCB Layout Bottom View



Special 7- and 9-Position PCB Layout Bottom View

No. of Positions	Duplex Plating Code	Part Numbers		
		With Hold-Down	Without Hold-Down	With Front Panel Grounding Fingers
3	A	—	749283-1	—
4	A	749230-1	749263-1	—
	B	749181-1	749264-1	750069-1 <sup>1</sup>
5	A	—	—	—
	B	749274-1	—	—
6	A	749231-1	749265-1	—
	B	749180-1	749266-1	750071-1 <sup>1</sup>
7	A	—	—	—
	B	—	749270-1	—
7 <sup>1</sup> Special	A	—	—	—
	B	786766-3 <sup>1</sup>	—	—
8	A	749232-1	749268-1	—
	B	749179-1	749267-1	750073-1 <sup>1</sup>
9 <sup>1</sup> Special	A	—	—	—
	B	786767-2 <sup>1</sup>	—	—

<sup>1</sup>Not certified by CSA

<sup>2</sup>Also available in low temperature version; contact AMP Incorporated.

<sup>3</sup>Housing is grey thermoplastic, UL 94V-0 rated.