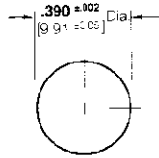
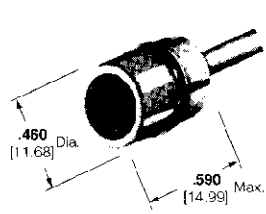


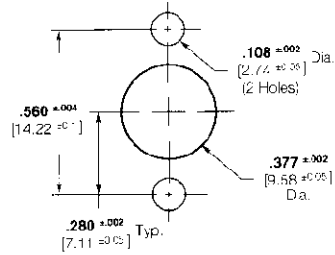
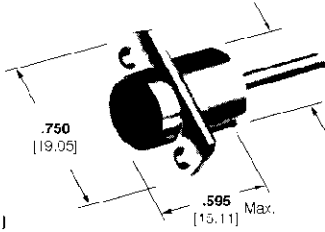
3.5 mm Blind Mate Connectors

Bulkhead Plug



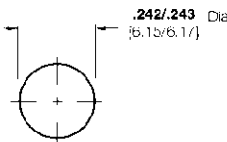
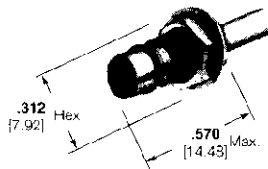
Maximum Panel Thickness .150 [3.81]
Recommended Panel Cutout

2-Hole Panel Plug

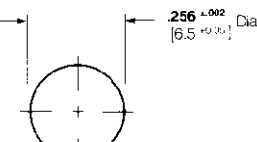


Maximum Panel Thickness .190 [4.83]
Recommended Panel Cutout

Bulkhead Jack



BMA Mount



BMB Mount

Maximum Panel Thickness .125 [3.18]
Recommended Panel Cutouts

Connector Cable Range Selection Code†	RG/U Cable	Connector Configuration	Part No.	Hand Tool Kit No. 59981-1	
				Die Set	Locator*
O	402 Semi-Rigid/.141 [3.58]	Bulkhead Plug	222201-1	312253-1	313745-1
		2-Hole Panel Plug	222200-1	312253-1	313745-1
		Bulkhead Jack (BMA Mount Cutout)	222198-1	312253-1	313746-1
		Bulkhead Jack (BMB Mount Cutout)	222199-1	312253-1	313746-1
P	405 Semi-Rigid/.086 [2.18]	Bulkhead Plug	222197-1	312253-2	313745-1
		Bulkhead Jack (BMA Mount Cutout)	222194-1	312253-2	313746-1
		Bulkhead Jack (BMB Mount Cutout)	222196-1	312253-2	313746-1

†Refer to pages 14 and 15 for code specifications.

*Not included in Hand Tool Kit No. 59981-1; must be purchased separately.

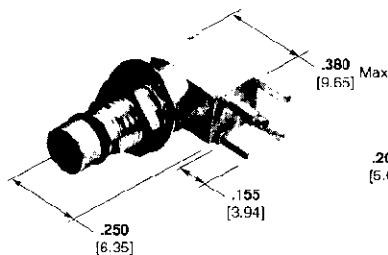
Lockwasher and Jam Nut



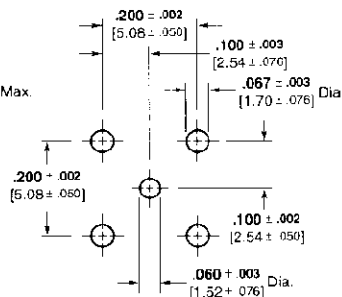
Part No. 1-22145-3

Part No. 2-332004-0

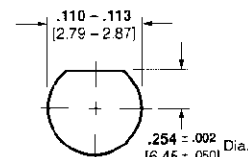
Right-Angle PC Board Bulkhead Jack



Part No. 448089-1



Recommended PCB Layout



Recommended Panel Cutout

Blind Mate Connectors