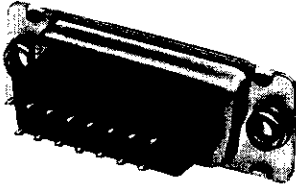
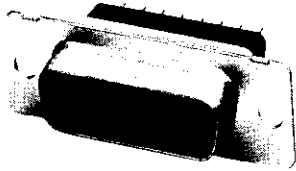
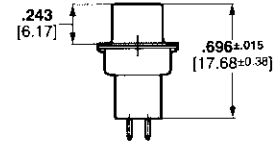
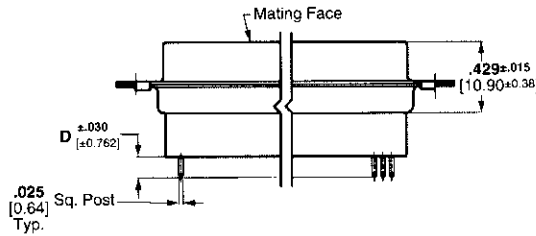
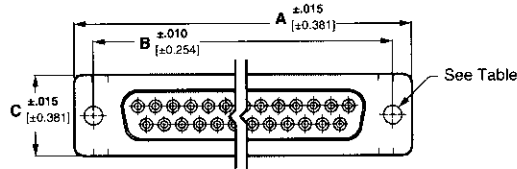


HD-20 Full Metal-Shell Straight Posted Connectors (Continued)

Receptacle



With Clinch Nuts



See customer drawings for pcb layouts.

Material and Finish:

Shell—Steel, tin plated

Insert—94V-0 rated thermoplastic, black

Clinch Nuts—Steel, zinc plated

Socket Contacts (Posted)—

Phosphor bronze, plated as follows:

A—.000030 [0.00076] gold on mating end, tin-lead on termination end, with entire contact .000050 [0.00127] (min.) nickel underplated

B—Gold flash on mating end, tin-lead on termination end, with entire contact .000050 [0.00127] (min.) nickel underplated

Technical Documents:

Product Specification—108-40025

Shell Size	No. of Contact Positions	Dimensions				Contact Finish (Plating Code)	Receptacle Part Numbers	
		A	B	C	D*		With .120 [3.05] Mounting Holes	With Clinch Nuts
1	9	1.213 30.81	.984 24.99	.494 12.55	.125	A	745183-1	747190-2
					3.18	B	745183-2	747190-1
					.188	A	745183-7	747190-4
					4.78	B	—	—
2	15	1.541 39.14	1.312 33.33	.494 12.55	.125	A	745185-1	745820-1
					3.18	B	—	745820-2
					.188	A	745185-7	—
					4.78	B	—	—
3	25	2.088 53.04	1.852 47.04	.494 12.55	.125	A	745187-1	745886-1
					3.18	B	—	745886-2
					.188	A	745187-7	—
					4.78	B	745187-8	—
4	37	2.729 69.32	2.500 63.50	.494 12.55	.125	A	745189-1	747315-1
					3.18	A	745189-7	—
					.188	A	745189-7	—
					4.78	A	745189-7	—
5	50	2.635 66.93	2.406 61.11	.605 15.37	.125	A	745191-1	747302-1
					3.18	A	745191-7	—
					.188	A	745191-7	—
					4.78	A	745191-7	—

*.125 [3.18] post length is for recommended pc board thickness of .062-.093 [1.58-2.36] max.; .188 [4.78] post length is for recommended pc board thickness of .093-.125 [2.36-3.18].

- Notes:**
1. All receptacles are preloaded with size 20 DF posted socket contacts.
 2. Special loading of contacts can be arranged upon request.
 3. Longer post lengths available, consult Tyco Electronics.