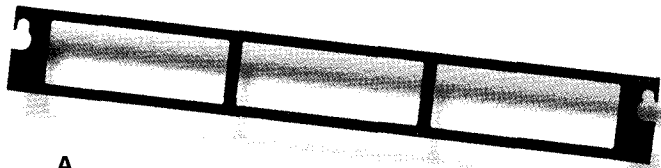




Panel Selection

Connectivity panels contain the modules and ports for distribution of voice and data signals to room outlet connections. All are available in Category 5e or Category 6.

Unloaded Connectivity Panel

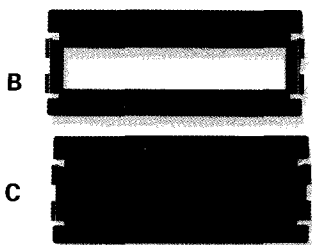


A

Product Facts

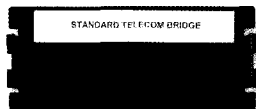
- :: Accepts the following front loadable snap-in modules:
- ... 1479697-1, SL Interface Housing
- ... 1479698-1, Blank Filler
- ... 1479700-1, Cat 5e Connectivity Module
- ... 1479701-1, Standard Telecom Bridge Module
- ... 1479702-1, Telecom Bridge/Security Module
- ... 1479703-1, DSL/Security Module
- ... 1479865-1, 110 Telecom Bridge Module

Description	Figure	Part Number
Unloaded Connectivity Panel	A	1479699-1
SL Interface Housing	B	1479697-1
Blank Filler	C	1479698-1



Module Descriptions

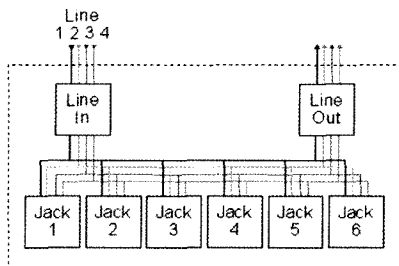
Standard Telecom Bridge



Front



Back

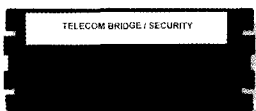


Product Facts

- :: 6 ports – 4 lines per port
- :: Expansion port
- :: For basic telephone, fax and dial-up modem service
- :: 1 ft Cat 5 expansion cord, 219205-1
- ... Bridge four incoming lines to six output ports
- ... Expansion ports

Description	Part Number
Front-Loadable Standard Telecom Bridge Module	1479701-1

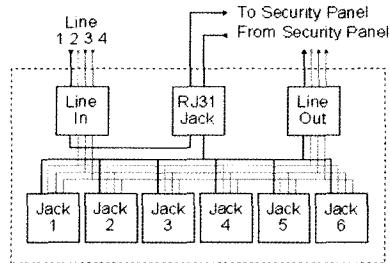
Telecom Bridge/Security



Front



Back



Product Facts

- :: 6 ports – 4 lines per port
- :: Expansion port
- :: RJ31 security interface port
- :: For basic telephone, fax and dial-up modem service
- :: Includes RJ31 shorting plug
- Note: RJ31 plug loops line 1 back to panel if no security system is currently installed.

Description	Part Number
Front-Loadable Telecom Bridge/Security Module	1479702-1



RJ31 Shorting Plug