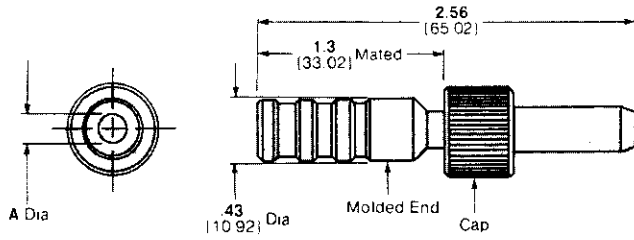
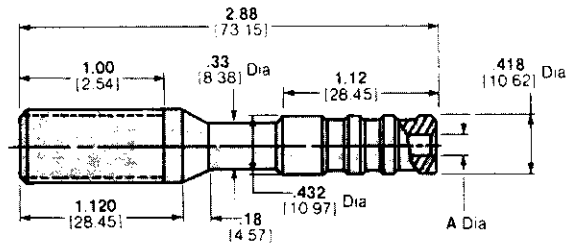


Plug Kits

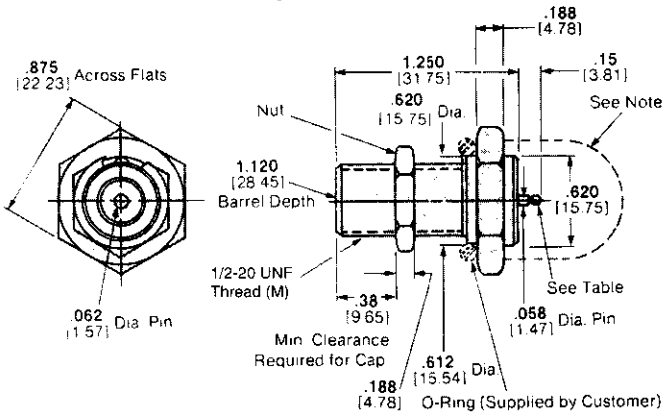


These plugs mate with receptacles shown on this page.

Free-Hanging Receptacle Kits

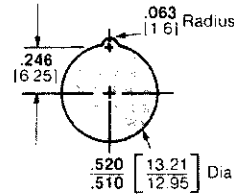
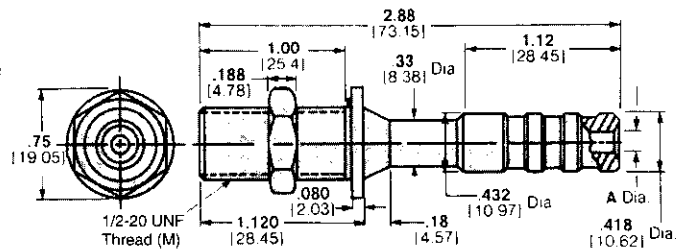


Bulkhead-Mounted Receptacle Kits

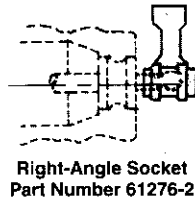
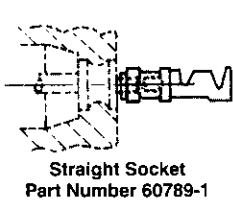


Note: If bulkhead and mounting hardware are metal at ground potential, the back end of the receptacle must be protected against arc-over and breakdown.

Bulkhead-Mounted Receptacle Kits With Rear Insulation Collar



Recommended Panel Cutout for Bulkhead Mounting



Voltage Rating	Description	Wire Size		Max. Ins. Dia.	Contact Part Number	Kit Part Number	Tooling Part No.	
		AWG	mm ²				Hand Tool	Extraction Tool
20 KVDC	Plug Kits*	22-20	0.3-0.6	.185 4.7	66399-1	861610-1	91523-1	861751-1
		18-16	0.8-1.4		66101-2	861610-3	91505-1	861751-1
		—	—	—	none	861610-5	—	861751-1
		22-20	0.3-0.6	.302 7.67	66399-1	861610-4	91523-1	861751-1
		18-16	0.8-1.4		66101-2	861610-2	91505-1	861751-1
		—	—	—	none	861610-6	—	861751-1
	Free-Hanging Receptacle Kits*	22-20	0.3-0.6	.185 4.7	66400-1	861753-1	91523-1	861751-1
		18-16	0.8-1.4		66099-2	861753-3	91505-1	861751-1
		22-20	0.3-0.6	.302 7.67	66400-1	861753-4	91523-1	861751-1
		18-16	0.8-1.4		66099-2	861753-2	91505-1	861751-1
	Bulkhead-Mounted Receptacle Kits*	—	—	—	60789-1 (Straight)**	861611-2	91507-1	—
		—	—	—	61276-2 (Right-Angle)**	861611-3	91507-1	—
	Bulkhead-Mounted Receptacle Kits* (with Rear Insulation Collar)	22-20	0.3-0.6	.185 4.7	66400-1	862197-1	91523-1	861751-1
		18-16	0.8-1.4		66099-2	862197-3	91505-1	861751-1
		—	—	—	none	862197-5	—	861751-1
		22-20	0.3-0.6	.302 7.67	66400-1	862197-4	91523-1	861751-1
		18-16	0.8-1.4		66099-2	862197-2	91505-1	861751-1
		—	—	—	none	862197-6	—	861751-1

* Contact included with kit.

** Crimp-on Contacts.