



AMP-LATCH Connectors (Continued)

Novo Receptacles, Military Polarized* 2.54 x 2.54 [.100 x .100] Centers

Housing Assembly with Cover (Preassembled) and Strain Relief (Optional)



Contacts mate with 0.54 [.025] sq. or round pins with 6.22 [.245] max. and 4.45 [.175] min. lengths.

Material and Finish:

Housing, Cover & Strain Relief—94V-0 rated thermoplastic, black

Contacts—Phosphor bronze, duplex plated (See chart below)

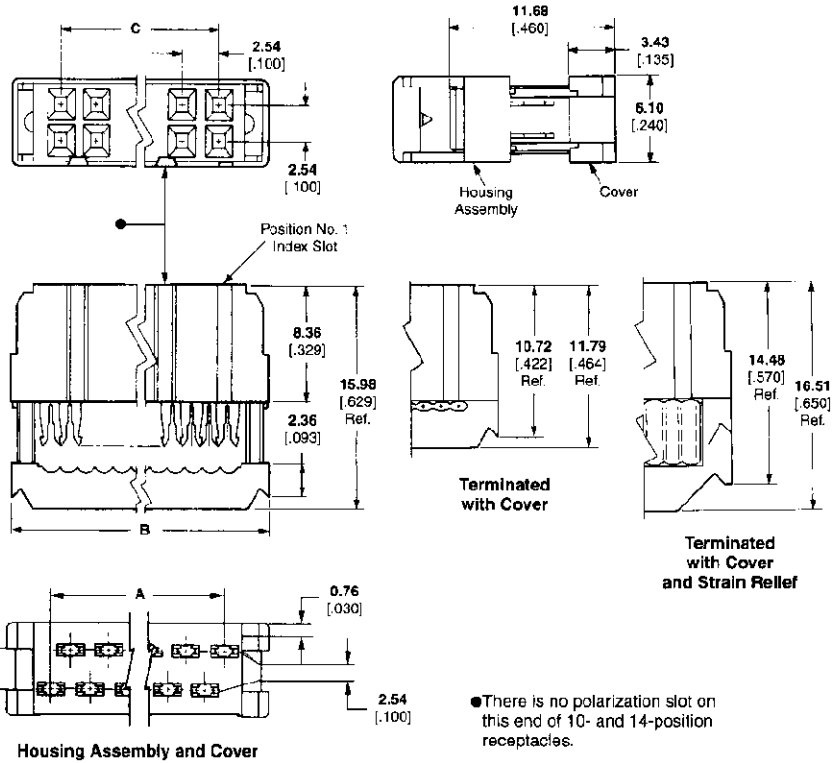
Related Product Data:

Electrical Characteristics — Page 488

Mateable Connectors:
Universal — Pages 497, 498

Low Profile — Pages 493, 496

Ribbon Cable — Page 498



● There is no polarization slot on this end of 10- and 14-position receptacles.

Accessories:

Keying Plug — Page 492

Application Tooling —

R-CAM 4 Cable Assembly Machine

R-CAM 3A Ribbon Cable Assembly Machine

R-CAM 2A Ribbon Cable Assembly Machine

Manual Arbor Tool — Part No. 91085-2

Pneumatic Auto-Cycle Tool — Part No. 91112-3

Strain Relief Dimensional Information — Page 492

Technical Documents:

Product Specifications —

108-40030 Novo and Novo Stackable Receptacles; 108-40004 Ribbon Cable, PVC Insulated, AMP

Application Specification —

114-40005 Ribbon Cable Connectors

No. of Pos.	Dimensions			Contact Plating	Strain Relief Part No.	Receptacle (Preassembled)
	A	B	C			
10	11.43	17.27	10.16	Duplex ¹	499252-5	499997-1
	.450	.680	.400	Duplex ²	499252-5	746290-1
14	16.51	22.35	15.24	Duplex ¹	499252-9	499997-2
	.650	.880	.600	Duplex ²	499252-9	746290-2
16	19.05	24.89	17.78	Duplex ¹	499252-8	499997-3
	7.50	.980	.700	Duplex ²	499252-8	746290-3
20	24.13	29.97	22.86	Duplex ¹	499252-2	499997-4
	.950	1.180	.900	Duplex ²	499252-2	746290-4
24	29.21	35.05	27.94	Duplex ¹	1-499252-0	499997-5
	1.150	1.380	1.100	Duplex ²	1-499252-0	746290-5
26	31.75	37.59	30.48	Duplex ¹	499252-3	499997-6
	1.250	1.480	1.200	Duplex ²	499252-3	746290-6
30	36.83	42.67	35.56	Duplex ¹	1-499252-2	499997-7
	1.450	1.680	1.400	Duplex ²	1-499252-2	746290-7
34*	41.91	47.75	40.64	Duplex ¹	499252-6	499997-8
	1.650	1.880	1.600	Duplex ²	499252-6	746290-8
40*	49.53	55.37	48.26	Duplex ¹	499252-1	499997-9
	1.950	2.180	1.900	Duplex ²	499252-1	746290-9
50*	62.23	68.07	60.96	Duplex ¹	499252-4	1-499997-0
	2.450	2.680	2.400	Duplex ²	499252-4	1-746290-0

¹0.00038 [.00015] gold on post/pin mating end, 0.00254-0.00508 [.000100-.000200] bright tin-lead on termination end, with entire contact underplated 0.00127 [.000050] nickel.

²0.00076 [.000030] gold on post/pin mating end, 0.00254-0.00508 [.000100-.000200] bright tin-lead on termination end, with entire contact underplated 0.00127 [.000050] nickel.

*These receptacles can be used in applications requiring non-polarization, as well as military polarization.

Internal Interconnects

General Internal Interconnects