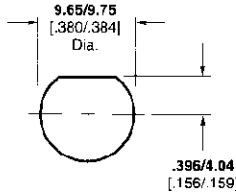


BNC Connectors, 50 Ohm (Continued)

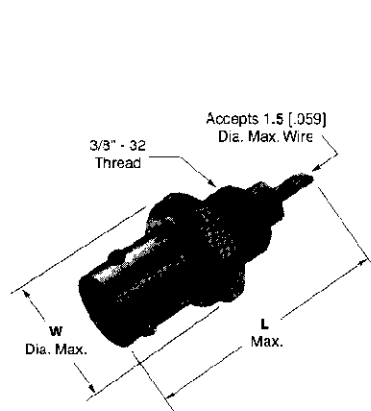
Bulkhead Solder Jacks, Front Mount

Body Plating—Nickel

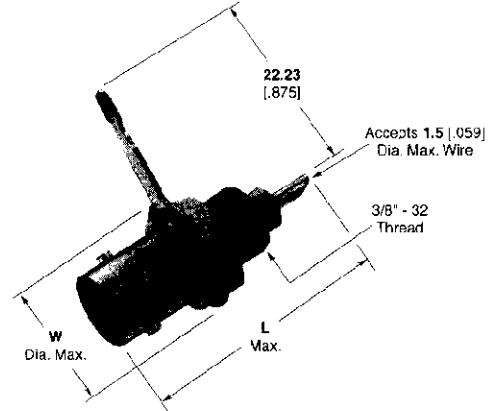


Recommended Panel Cutout

Without Solder Terminal



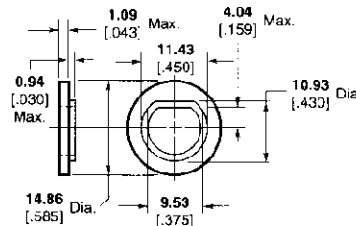
With Solder Terminal



Contact Material	Dielectric	Dimensions		Panel Thickness	Insulating Bushing	Part No.	
		L	W			Without Solder Terminal*	With Solder Terminal**
Silver	VALOX	26.93 1.060	13.09 .515	1.17-3.18 .046-.125	227223-1 or 221951-1	227754-3	227755-3
		33.33 1.312	13.09 .515	1.17-6.35 .046-.250	227223-1 or 221951-1	227169-3	227169-7
Gold	VALOX	26.93 1.060	13.09 .515	1.17-3.18 .046-.125	227223-1 or 221951-1	227754-2	227755-2
		33.33 1.312	13.09 .515	1.17-6.35 .046-.250	227223-1 or 221951-1	227169-4	227169-8
	TEFLON	26.93 1.060	13.09 .515	1.17-3.18 .046-.125	227223-1 or 221951-1	227715-3	227716-3
		33.33 1.312	13.09 .515	1.17-6.35 .046-.250	227223-1 or 221951-1	227169-1	227169-5
Tin Lead	VALOX	26.93 1.060	13.09 .515	1.17-3.18 .046-.125	227223-1 or 221951-1	227754-1	227755-1

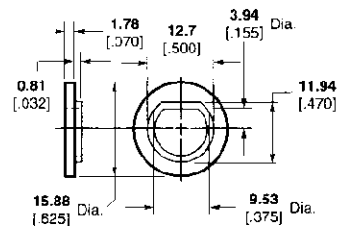
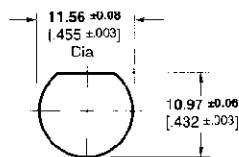
*Includes lockwasher and jam nut.
**Includes solder terminal and jam nut.

Insulating Bushings



Part No. 227223-1

Recommended Panel Cutout



Part No. 221951-1

Recommended Panel Cutout

