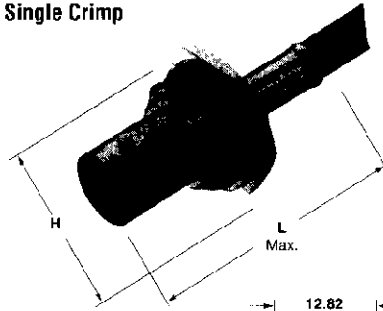


BNC Connectors, 50 Ohm (Continued)

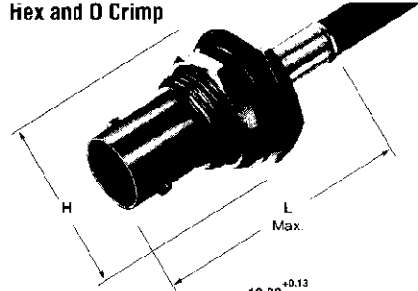
Bulkhead Jacks, Crimp

Note: Panel Insulating Bushings — Page 54

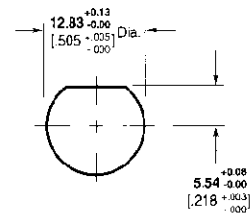
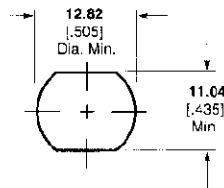
Single Crimp



Hex and O Crimp



Recommended Panel Cutouts
Maximum Panel Thickness **3.18** [.125]



H = 11/16" across flats, 20.32 [.800] Max. across points

RG/U Cable	Termination Type	Center Contact Plating	Body Plating	Dielectric	Style	Dim. L	CERTI-CRIMP Hand Tool with Integral Die	Interchangeable Dies for PRO-CRIMPER Hand Tool 354940-1 or PRO-CRIMPER Adapter 679304-1	Interchangeable Dies for Hand Tool 69710-1 & 626 Pneu.	Part No. Head 318161-1
178, 176A, 178B, 196, 196A	Single Crimp	Gold	Silver	TEFLON	Mil Type	32.13 1.265	69245-4	—	69471	331974
174, 189, 188A, 316	Hex Crimp	Gold	Nickel	Polymethyl-pentene	Commercial	36.83 1.450	—	58436-3	—	413771-3
	O Crimp	Gold	Nickel	Polypropylene	Commercial	34.93 1.375	220009-5	—	220217-3	228980-7
	O Crimp	Gold	Nickel	TEFLON	Mil Type	35.71 1.406	220009-1	—	220026-1	225398-7
	O Crimp	Gold	Silver	TEFLON	Mil Type	35.71 1.406	220009-1	—	220026-1	1-331693-2
	Single Crimp	Gold	Silver	TEFLON	Mil Type	32.13 1.265	69245-2	—	69422	2-330063-1
179, 179A, 179B, 161, 187, 187A, Belden 9221	Hex Crimp	Gold	Nickel	Polymethyl-pentene	Commercial	36.83 1.450	—	58436-3	—	413771-4
	O Crimp	Gold	Nickel	TEFLON	Mil Type	35.71 1.406	220009-1	—	220026-1	225398-8
	Single Crimp	Gold	Silver	TEFLON	Mil Type	32.13 1.265	69245-1	—	69408	2-329458-1
Times RD316	O Crimp	Gold	Nickel	TEFLON	Mil Type	35.71 1.406	69477-2	—	69669-2	1-225398-5
18C, 180A, 18CB, 195, 95A	Hex Crimp	Gold	Nickel	Polymethyl-pentene	Commercial	36.83 1.450	—	58436-3	—	413771-5
Belden 9907, 86907, 8219, Comm/Scope 2104, 3104	Hex Crimp	Gold	Nickel	Polymethyl-pentene	Commercial	36.83 1.450	—	58436-1	—	413771-6