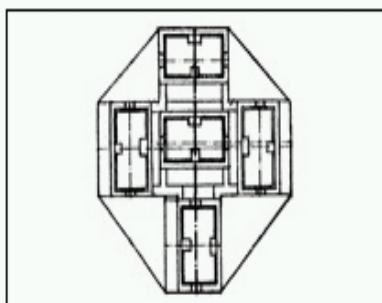


## 926526-1 Product Details

Have a Question?

Chat with a Product Information Specialist



926526-1

TE Internal Number: 926526-1

Active

[View 3D PDF](#)

### Positive Lock Connectors

[Always EU RoHS/ELV Compliant \(Statement of Compliance\)](#)

#### Product Highlights:

- Connector
- Not Preloaded
- Connector Style = Plug
- Accepts Contact Gender = Receptacle
- Mating Area Interface Dimensions = 6.35 mm

[View all Features](#)

#### Quick Links

- ▶ [Check Pricing & Availability](#)
- ▶ [Search for Tooling](#)
- ▶ [Product Feature Selector](#)
- ▶ [Contact Us About This Product](#)

[Add to My Part List](#) [Request Sample](#) [Find Similar Products](#) [Buy Product](#)

### Documentation & Additional Information

#### Product Drawings:

- [5 POS.POS.-LOCK HOUSING \( RELAY \) 5 pol. Pos.-Lock...](#) (PDF, English)

#### Catalog Pages/Data Sheets:

- None Available

#### Product Specifications:

- None Available

#### Application Specifications:

- None Available

#### Instruction Sheets:

- None Available

#### CAD Files: [\(CAD Format & Compression Information\)](#)

- [2D Drawing](#) (DXF, Version H)
- [3D Model](#) (IGES, Version H)
- [3D Model](#) (STEP, Version H)

#### Additional Information:

- [Product Line Information](#)

#### Related Products:

- [Tooling](#)

[List all Documents](#)

### Product Features (Please use the Product Drawing for all design activity)

#### Product Type Features:

- [Product Type](#) = Connector
- [Mating Area Interface Dimensions \(mm \[in\]\)](#) = 6.35 [.250]
- [Receptacle Style](#) = Straight
- [Color](#) = Black
- [Material](#) = Polyamide 6.6
- [Keyed](#) = No

#### Body Related Features:

- Number of Positions = 5
- [Position Keyed](#) = None

#### Contact Related Features:

- Preloaded = No
- Accepts Contact Gender = Receptacle

#### Housing Related Features:

- Connector Style = Plug
- UL Flammability Rating = UL 94V-0

#### Industry Standards:

- [RoHS/ELV Compliance](#) = RoHS compliant, ELV compliant
- [Lead Free Solder Processes](#) = Not relevant for lead free process
- RoHS/ELV Compliance History = Always was RoHS compliant

#### Other:

- [Line](#) = Mark I
- Brand = AMP

BOOKMARK

#### Corporate Information

- [Who We Are](#)
- [Investors](#)
- [News Room](#)
- [Supplier Portal](#)
- [Careers](#)

#### Quick Links

- [Check Distributor Inventory](#)
- [Cross Reference](#)
- [Find Documents & Drawings](#)
- [Product Compliance Support Center](#)
- [Site Map](#)

#### Customer Support

- [Email or Chat with Us](#)
- [Find a Phone Number](#)
- [Search Knowledge Base](#)
- [Manage Your Account](#)

#### Sign up for our eNewsletter

Enter your email address

#### Follow Us On:



#### Visit Us On:

