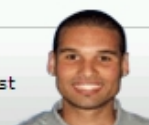


5650860-5 Product Details

Have a Question?

Chat with a Product Information Specialist



5650860-5

TE Internal Number: 5650860-5

 [Active](#)

Eurocard Type B

 [Always EU RoHS/ELV Compliant \(Statement of Compliance\)](#)

Product Highlights:

- Housing Gender = Plug
- Preloaded
- Contact Gender = Receptacle
- 64 Positions
- PCB Mount Angle = Vertical

[View all Features](#)

Quick Links

- ▶ [Check Pricing & Availability](#)
- ▶ [Search for Tooling](#)
- ▶ [View Mating Products \(4\)](#)
- ▶ [Product Feature Selector](#)
- ▶ [Contact Us About This Product](#)

[Add to My Part List](#)
 [Request Sample](#)
 [Find Similar Products](#)
 [Buy Product](#)

Documentation & Additional Information

Documents are temporarily unavailable. We are working hard to correct the problem. Please try again later.

Additional Information:

- [Product Line Information](#)

Related Products:

- [Tooling](#)
- [Mating Products \(4\)](#)

Product Features (Please use the Product Drawing for all design activity)

Product Type Features:

- [PCB Mount Angle](#) = Vertical
- [Post Type](#) = Solder Post
- [Make First / Break Last](#) = No
- [Bus Type](#) = CIMBUS, STE Bus
- [DIN Level](#) = II
- [Size](#) = Standard
- [PCB Mount Retention](#) = Without
- Color = Gray
- Comment = Contact Finish: DIN 41612 Class 2 In Contact Area. Tin On Posts.

Termination Related Features:

- [Termination Post Length \(mm \[in\]\)](#) = 3.30 [0.130]

Body Related Features:

- [Number of Positions](#) = 64
- [Contact Cross Section \(mm \[in\]\)](#) = 0.30 x 0.61 [.012 x .024]
- Rows Loaded = A, B

Contact Related Features:

- Preloaded = Yes
- Contact Gender = Receptacle
- Contact Base Material = Copper Alloy

Housing Related Features:

- Housing Gender = Plug
- Housing Material = Polymer
- UL Flammability Rating = UL 94V-0

Industry Standards:

- [RoHS/ELV Compliance](#) = RoHS compliant, ELV compliant
- [Lead Free Solder Processes](#) = Wave solder capable to 240°C, Wave solder capable to 260°C, Wave solder capable to 265°C
- [Flux-Tight Coating](#) = Without
- RoHS/ELV Compliance History = Always was RoHS compliant

Conditions for Usage:

- Applies To = Printed Circuit Board

Other:

- Brand = AMP

 [BOOKMARK](#) 

Corporate Information

[Who We Are](#)
[Investors](#)
[News Room](#)
[Supplier Portal](#)
[Careers](#)


Quick Links

[Check Distributor Inventory](#)
[Cross Reference](#)
[Find Documents & Drawings](#)
[Product Compliance Support Center](#)
[Site Map](#)

Customer Support

[Email or Chat with Us](#)
[Find a Phone Number](#)
[Search Knowledge Base](#)
[Manage Your Account](#)

Sign up for our eNewsletter

Enter your email address 

Follow us on:

