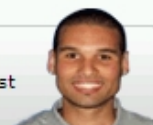


5352152-1 Product Details

Have a Question?

Chat with a Product Information Specialist



5352152-1

TE Internal Number: 5352152-1

Active

[View 3D PDF](#)

2mm Hard Metric PCB Mount Connectors (Z-PACK 2mm HM)

[Always EU RoHS/ELV Compliant \(Statement of Compliance\)](#)

Product Highlights:

- Connector
- Housing Gender = Plug
- Contact Gender = Receptacle
- Type = Type B, 22 Column
- Interface Type = 2mm HM

[View all Features](#)

Quick Links

- ▶ [Check Pricing & Availability](#)
- ▶ [Search for Tooling](#)
- ▶ [View Mating Products \(5\)](#)
- ▶ [Product Feature Selector](#)
- ▶ [Contact Us About This Product](#)

[Add to My Part List](#) [Request Sample](#) [Find Similar Products](#) [Buy Product](#)

Documentation & Additional Information

Product Drawings:

- [Z-PACK 2mm HM TYPE B - 22 COLUMNS PRE-SHIELDED RECEP...](#) (PDF, English)

Catalog Pages/Data Sheets:

- None Available

Product Specifications:

- [Z-Pack 2 mm HM CONNECTORS](#) (PDF, English)

Application Specifications:

- [Z-PACK 2mm HM Interconnection System for Board-to-Bo...](#) (PDF, English)

Instruction Sheets:

- None Available

CAD Files: [\(CAD Format & Compression Information\)](#)

- [2D Drawing](#) (DXF, Version B)
- [3D Model](#) (IGES, Version B)
- [3D Model](#) (STEP, Version B)

[List all Documents](#)

Additional Information:

- [Product Line Information](#)

Related Products:

- [Tooling](#)
- [Mating Products \(5\)](#)

Product Features (Please use the Product Drawing for all design activity)

Product Type Features:

- Product Type = Connector
- [PCB Mount Angle](#) = Right Angle
- [Mating Polarization](#) = Without
- Comment = Female connector with pre-installed shield.

Mechanical Attachment:

- [Board Mount](#) = Free Board
- Module Length (mm [in]) = 44.00 [1.732]
- [Crosstalk Version](#) = Standard
- Shield Type = Ground Return Shielding
- Shield Style = Upper

Electrical Characteristics:

- [Shielded](#) = Yes

Termination Related Features:

- [Interface Type](#) = 2mm HM
- Termination End Plating = Tin over Nickel

Body Related Features:

- Type = Type B, 22 Column
- [Number of Rows](#) = 5
- [Number of Positions](#) = 110
- [Grounding Contact](#) = Without
- Rows Loaded = A, D, E, C, B
- Number of Signal Contacts = 110
- CompactPCI Designation = J2, J5

Contact Related Features:

- Contact Gender = Receptacle
- Contact Type = ACTION PIN Post, Signal
- [Feedthrough Post Length \(mm \[in\]\)](#) = 3.30 [0.130]
- [CompactPCI](#) = Yes
- [Contact Plating, Mating Area, Material](#) = Gold (30)
- Contact Base Material = Phosphor Bronze

Housing Related Features:

- Housing Gender = Plug
- Housing Material = Polyester GF
- Housing Color = Gray
- UL Flammability Rating = UL 94V-0

Industry Standards:

- [RoHS/ELV Compliance](#) = RoHS compliant, ELV compliant
- [Lead Free Solder Processes](#) = Not relevant for lead free process
- RoHS/ELV Compliance History = Always was RoHS compliant

Other:

- Brand = AMP

BOOKMARK

Corporate Information

[Who We Are](#)
[Investors](#)
[News Room](#)
[Supplier Portal](#)
[Careers](#)

Quick Links

[Check Distributor Inventory](#)
[Cross Reference](#)
[Find Documents & Drawings](#)
[Product Compliance Support Center](#)
[Site Map](#)

Customer Support

[Email or Chat with Us](#)
[Find a Phone Number](#)
[Search Knowledge Base](#)
[Manage Your Account](#)

Sign up for our eNewsletter

Enter your email address

Follow us on: