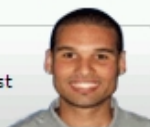


5352127-1 Product Details

Have a Question?

Chat with a Product Information Specialist



5352127-1

TE Internal Number: 5352127-1

Active

[View 3D PDF](#)

2mm Hard Metric PCB Mount Connectors (Z-PACK 2mm HM)

Always EU RoHS/ELV Compliant ([Statement of Compliance](#))

Product Highlights:

- Connector
- Housing Gender = Receptacle
- Contact Gender = Pin
- Type = Type B, 19 Column
- Interface Type = 2mm HM

[View all Features](#)

Quick Links

- ▶ [Check Pricing & Availability](#)
- ▶ [Search for Tooling](#)
- ▶ [View Mating Products \(1\)](#)
- ▶ [Product Feature Selector](#)
- ▶ [Contact Us About This Product](#)

[Add to My Part List](#) [Request Sample](#) [Find Similar Products](#) [Buy Product](#)

Documentation & Additional Information

Product Drawings:

- [MALE ASSEMBLY, Z-PACK 2mm HM, TYPE B](#) (PDF, English)

Catalog Pages/Data Sheets:

- None Available

Product Specifications:

- [Z-Pack 2 mm HM CONNECTORS](#) (PDF, English)

Application Specifications:

- [Z-PACK 2mm HM Interconnection System for Board-to-Bo...](#) (PDF, English)

Instruction Sheets:

- None Available

CAD Files: ([CAD Format & Compression Information](#))

- [2D Drawing](#) (DXF, Version 0)
- [3D Model](#) (IGES, Version 0)
- [3D Model](#) (STEP, Version 0)

[List all Documents](#)

Additional Information:

- [Product Line Information](#)

Related Products:

- [Tooling](#)
- [Mating Products \(1\)](#)

Product Features (Please use the Product Drawing for all design activity)

Product Type Features:

- Product Type = Connector
- [PCB Mount Angle](#) = Vertical
- [Mating Polarization](#) = Without

Mechanical Attachment:

- [Board Mount](#) = Fixed Board
- [Module Length \(mm \[in\]\)](#) = 38.00 [1.496]
- [Crosstalk Version](#) = Standard

Electrical Characteristics:

- [Shielded](#) = No

Termination Related Features:

- [Interface Type](#) = 2mm HM
- Termination End Plating = Tin over Nickel

Body Related Features:

- Type = Type B, 19 Column
- [Number of Rows](#) = 5+2
- [Number of Positions](#) = 133
- [Grounding Contact](#) = Without
- Rows Loaded = A, D, E, C, B, F, Z
- Number of Signal Contacts = 95

Contact Related Features:

- Contact Gender = Pin
- [Contact Type](#) = Signal
- [Feedthrough Post Length \(mm \[in\]\)](#) = 14.50 [0.571], 16.00 [0.630]
- [CompactPCI](#) = Yes
- [Contact Plating, Mating Area, Material](#) = Gold (30)
- Contact Style = Feed through
- [Feedthrough Post Length \(Rows A-E\) \(mm \[in\]\)](#) = 14.50 [0.571]
- [Feedthrough Post Length \(Rows F&Z\) \(mm \[in\]\)](#) = 16.00 [0.630]
- Contact Base Material = Phosphor Bronze

Housing Related Features:

- Housing Gender = Receptacle
- Housing Material = Polyester GF
- Housing Color = Gray
- UL Flammability Rating = UL 94V-0

Industry Standards:

- [RoHS/ELV Compliance](#) = RoHS compliant, ELV compliant
- [Lead Free Solder Processes](#) = Not relevant for lead free process
- RoHS/ELV Compliance History = Always was RoHS compliant

Other:

- Brand = AMP

BOOKMARK

Corporate Information

- [Who We Are](#)
- [Investors](#)
- [News Room](#)
- [Supplier Portal](#)
- [Careers](#)

Quick Links

- [Check Distributor Inventory](#)
- [Cross Reference](#)
- [Find Documents & Drawings](#)
- [Product Compliance Support Center](#)
- [Site Map](#)

Customer Support

- [Email or Chat with Us](#)
- [Find a Phone Number](#)
- [Search Knowledge Base](#)
- [Manage Your Account](#)

Sign up for our eNewsletter

Enter your email address

Follow us on: